

MEPlinx is a tool to import the services data from MEPworx (via CYC format) into Revit. This version imports pipework, ductwork, light fittings and public health systems.

There are possible installations, one targeting the current version of Revit and the other the previous version. Choose the appropriate one. For example:

MEPlinx 2023 for Revit 2022

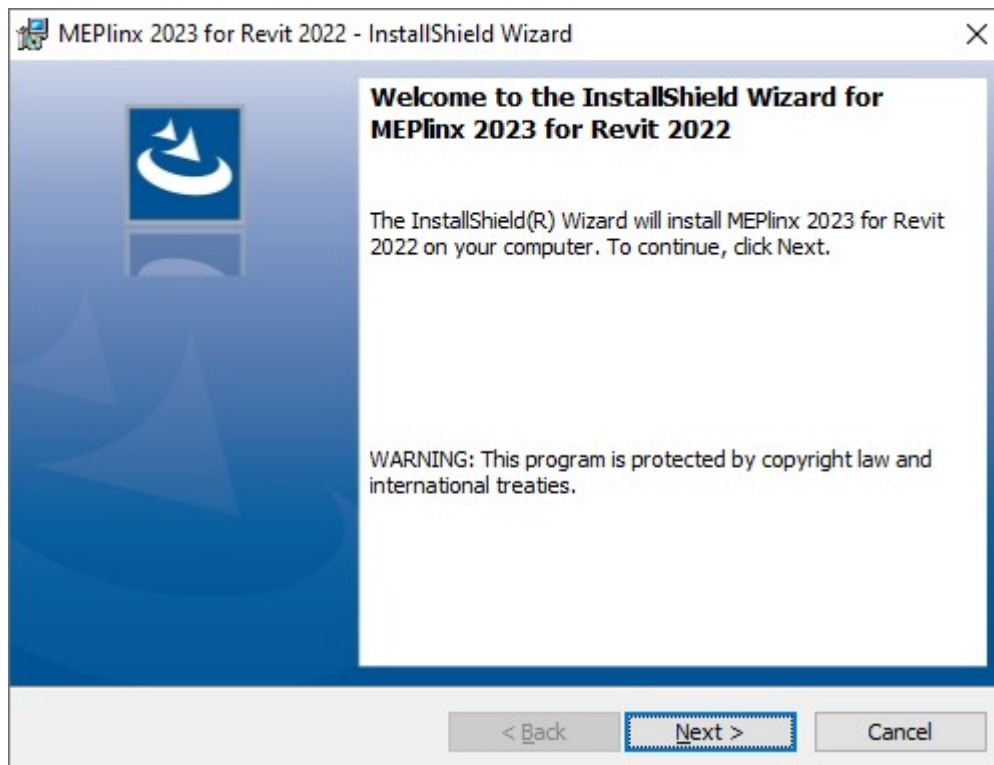
and

MEPlinx 2023 for Revit 2022

Both of these versions will import MEPworx projects from MEPworx 2023 and earlier versions of Cymap.

Installation

When the installer is run the following dialog is displayed:

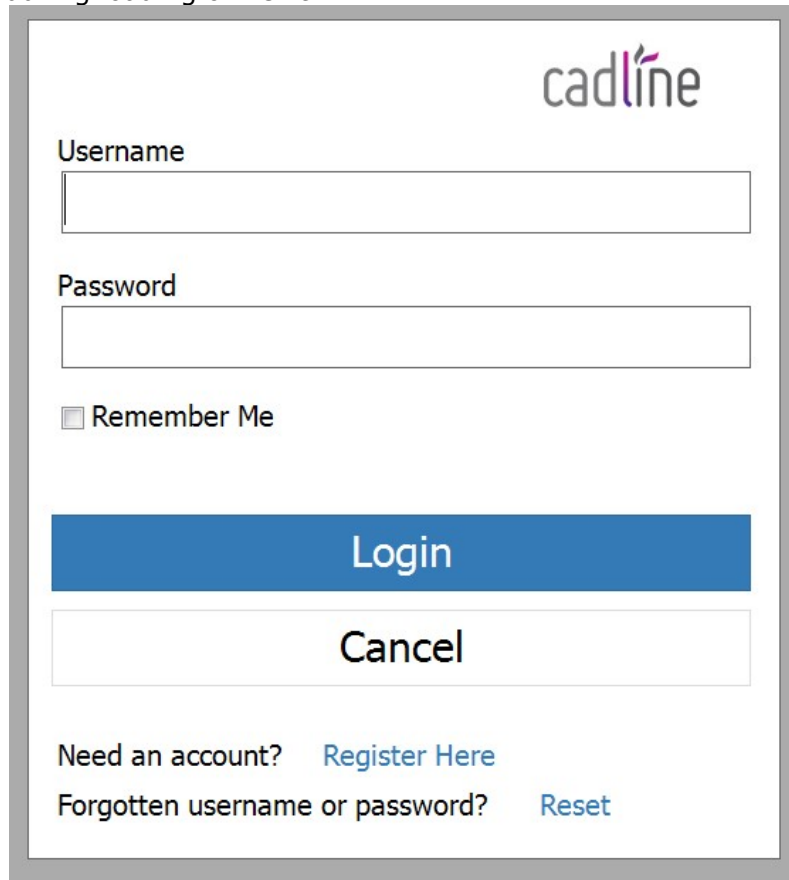


Click Next, to view the licence which must be accepted before installation can proceed. Continue clicking Next, filling in your name and company name etc. until the product has finished installation.

At the end of the install, click Finish.

Licensing

On starting Revit after installing the tool, it will start the registration procedure. The following window is displayed during loading of Revit:

A screenshot of a login window for 'cadline'. The window has a grey border. In the top right corner is the 'cadline' logo. Below it are two text input fields: 'Username' and 'Password'. Under the 'Password' field is a checkbox labeled 'Remember Me'. There are two buttons: a blue 'Login' button and a white 'Cancel' button with a grey border. At the bottom, there are two lines of text: 'Need an account? [Register Here](#)' and 'Forgotten username or password? [Reset](#)'.

Enter the credentials given by your Team Leader. The designated Team Leader will have set the user accounts up. You can now carry on with Revit as usual.

Cancelling the window will load Revit as usual, and not start the registration process. Until the registration is completed every time Revit is run, the above window will be displayed.

Maintenance

Choosing Help->About on the MEPlinx ribbon, give access to account details, via the Account button. From here licences can be free by choosing Logout.

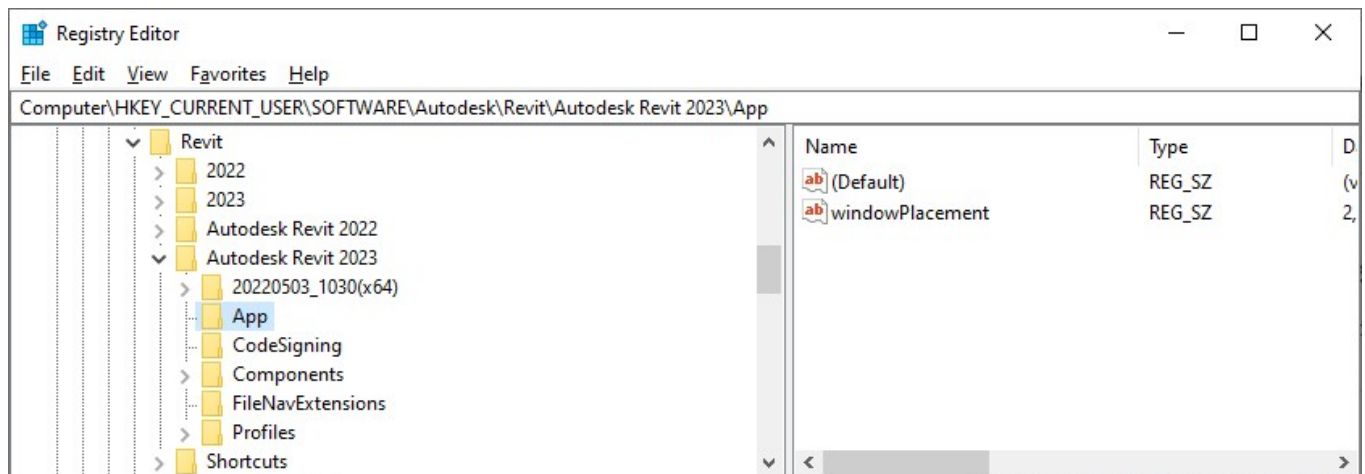
Account information can be viewed and changed in the [Cadline Cloud website](#).

Troubleshooting

The installer says “This version of MEPlinx requires Revit 20xx. Installation cannot proceed”

This message usually means just what it says, that the required version of Revit is not installed, check it is installed and has been run at least once. If it is installed and run, it's possible there is a problem related to user accounts.

The installer detects Revit by looking in the registry. Specifically looking for the windowPlacement value which Revit writes when it runs:



Revit uses the HKEY_CURRENT_USER part of the registry, which is only visible to the currently logged in user. Some organisations have a special account used to install software, and this registry key would not be visible to that account.

To get around this run Revit using the same account you will later use to install MEPlinx, so the registry settings are written.

Alternatively, another solution is to manually create the keys and values shown above for the required version of Revit, whilst logged into the account to be used for the install.