

Adding copies of standard parts to the Content centre & customising them

This white paper will guide you through the steps necessary to copy of a standard part to the Content centre and customise its family table, creating new sizes.

Advanced Inventor Users, Content Centre Administrators

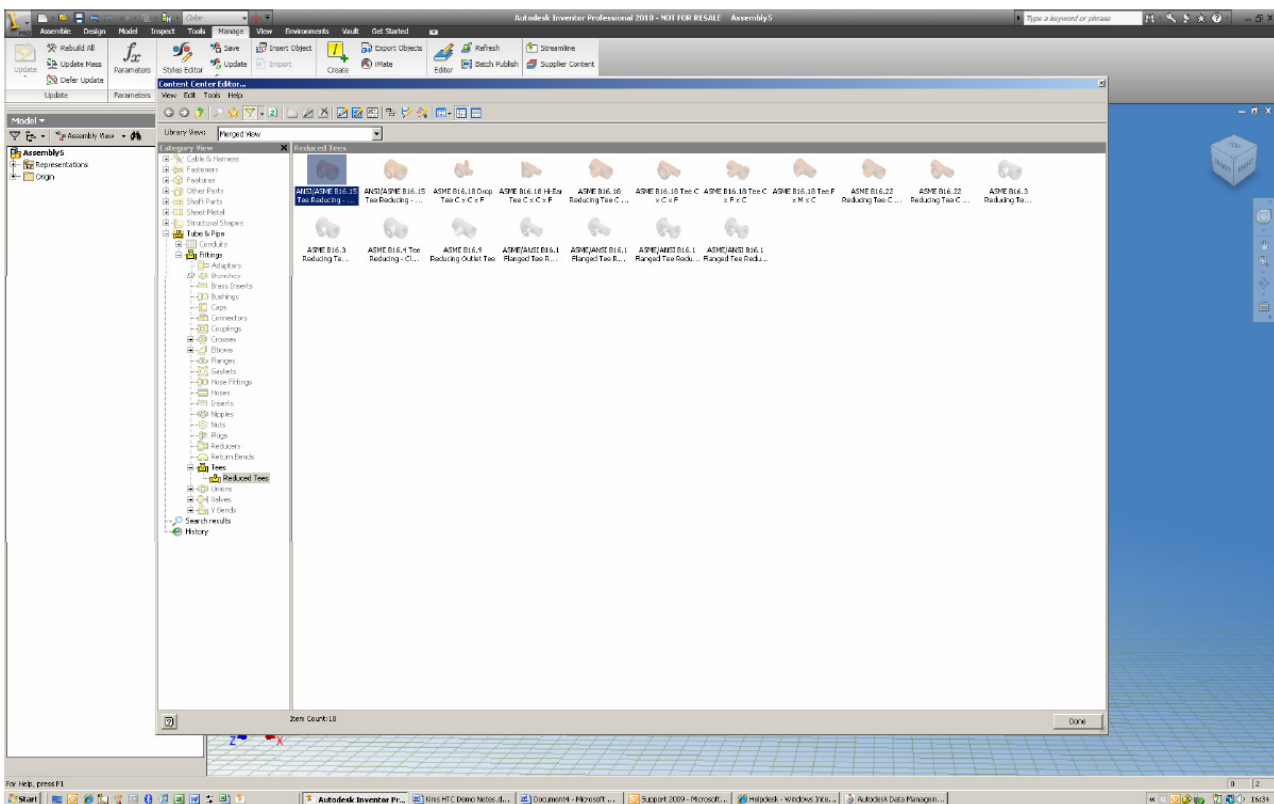
Please note: You will need a read/write library configured to continue.

By default, there is a library called **My Library** in both Desktop Content and ADMS (Vault server) installations. If you are working on a shared network, using ADMS server, you may need to have permission to edit the content centre, speak to your content centre administrator who will be able to set your permission to Content centre editor.

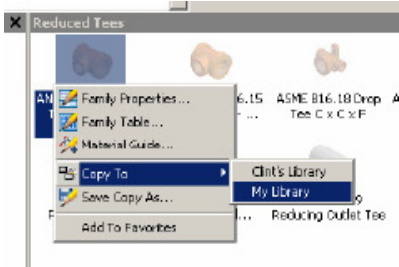
From the Content centre editor in Inventor

2009 – Tools - Content Centre Editor

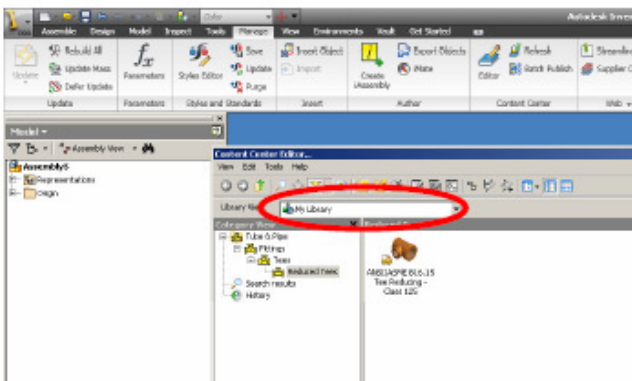
2010/2011 – Manage tab – Content Centre Tab – Editor



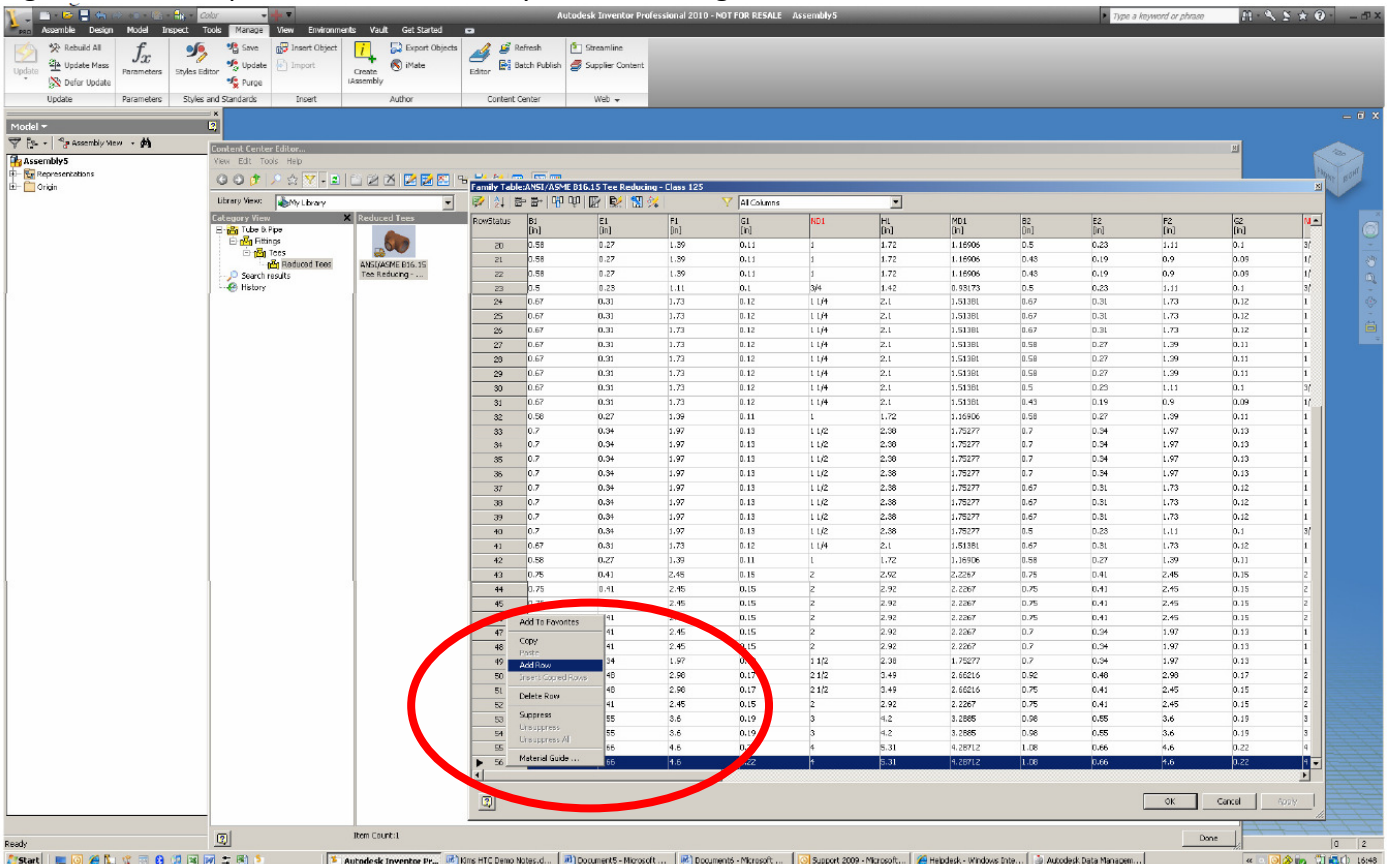
To add a specific part to your library, right click on it and copy it to **My Library** (or any other Shared Library)

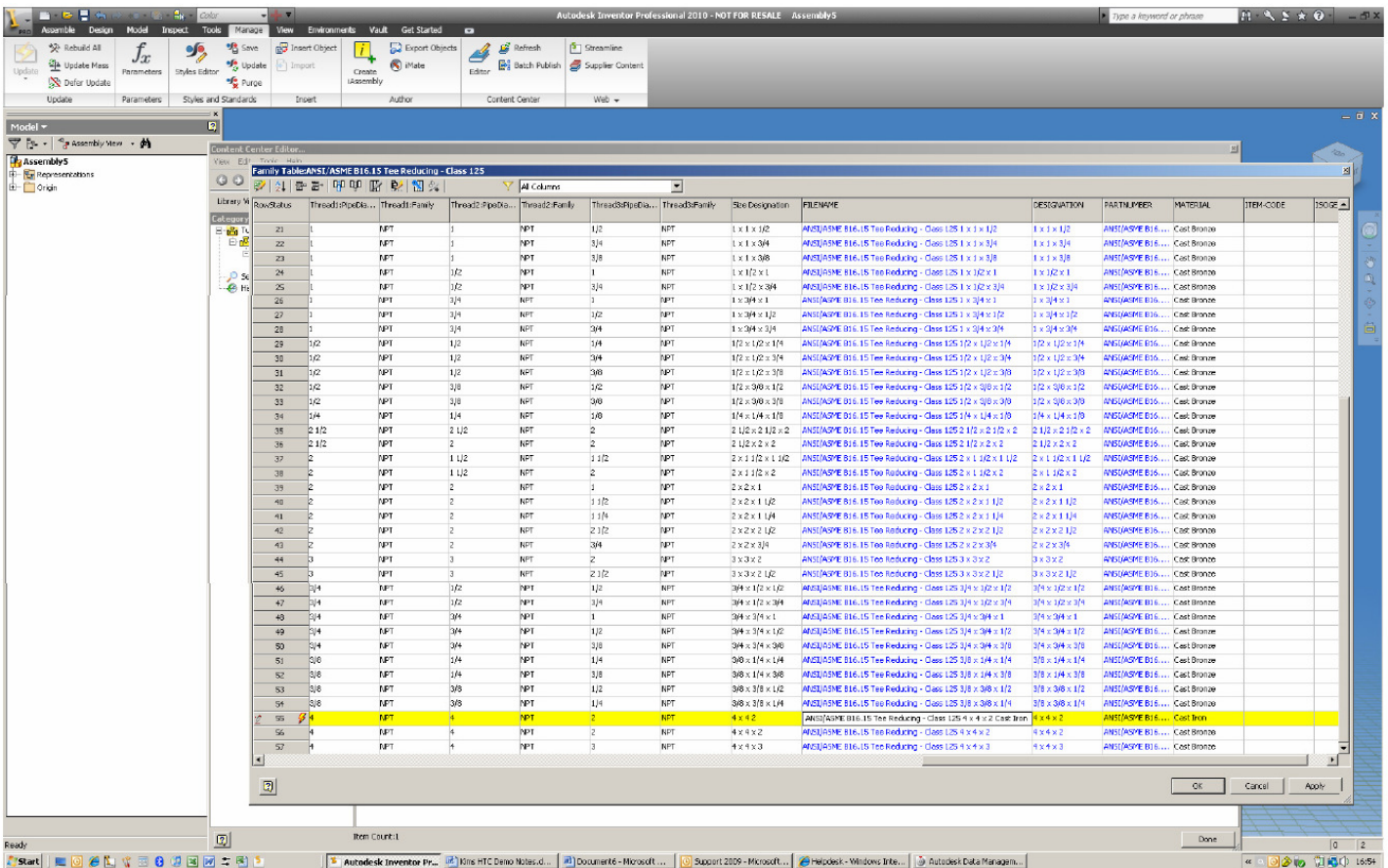


Change your library view to My Library (Note: the tee that I added is listed below)



Right click on the part and click on Family Table, then right click on a row and click on add row





Add in the required dimensions, give the part a file name and click on apply. Note that you can put pretty much anything into the fields shown above, but if the information that you input does not make sense, your part will not be generated. I have made a copy of the ANSI/ASME B16.15 Tee Reducing – Class 125 4x4x2, but I have changed the material to cast iron.

Test that your part works, by placing it into an assembly.

