

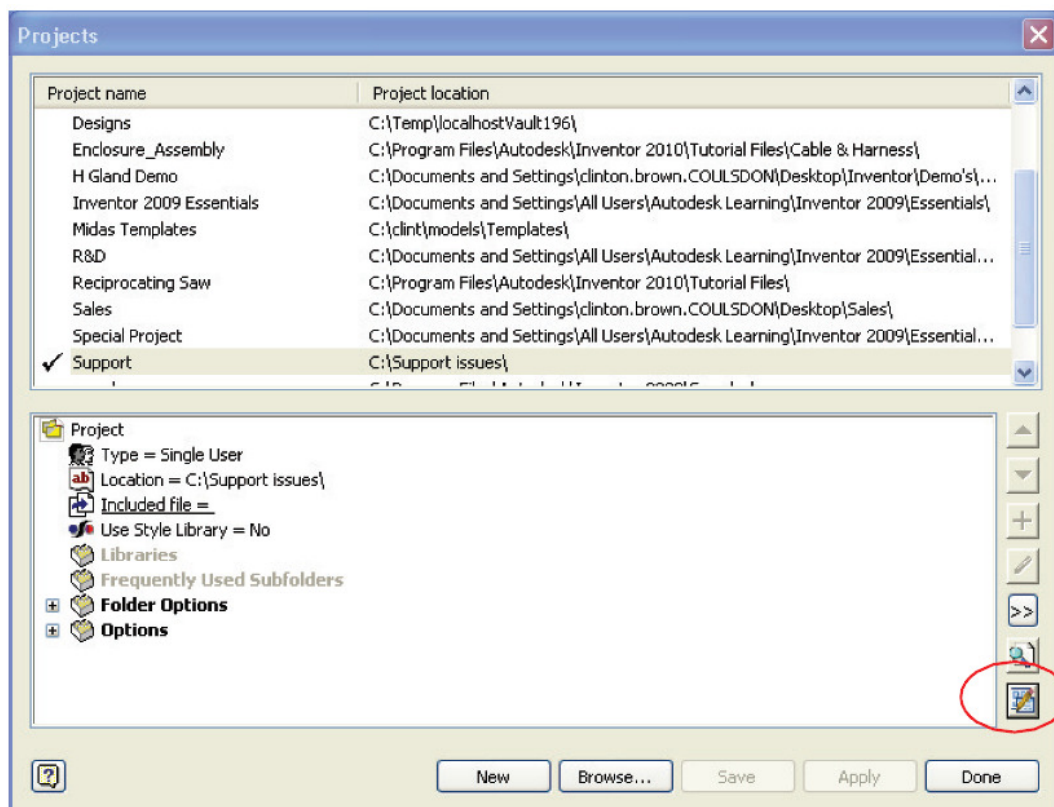
# Content Centre - adding libraries to your project

This white paper is designed to guide you through the process of adding additional content centre libraries to you current Inventor Project

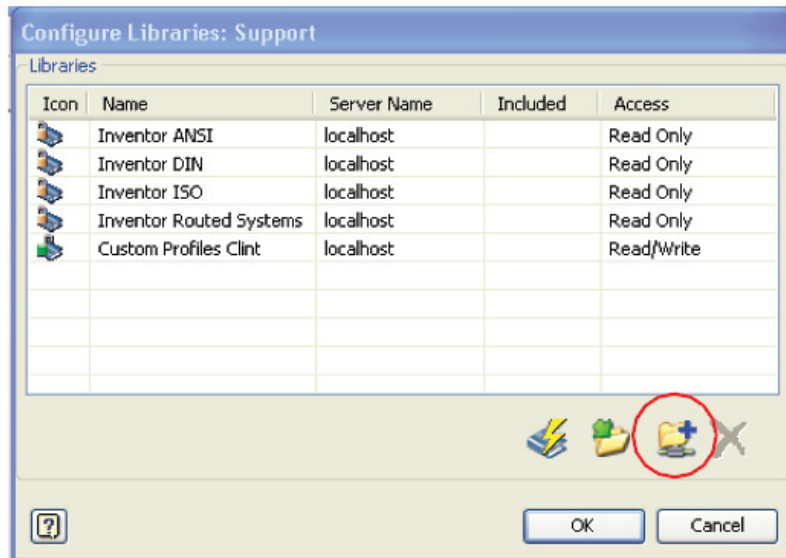
Inventor Users, advanced Inventor users, some IT departments

Inside of Inventor, close all files and click on file new, then click on **Projects**

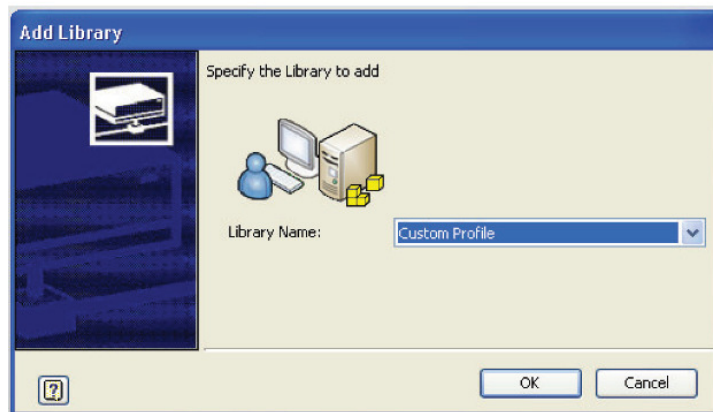
It is important to note that Inventor loads up the active project file when any Inventor file is opened, this is why you need to close all files. It is not possible to change the current project file or make any modifications to it with a file open.



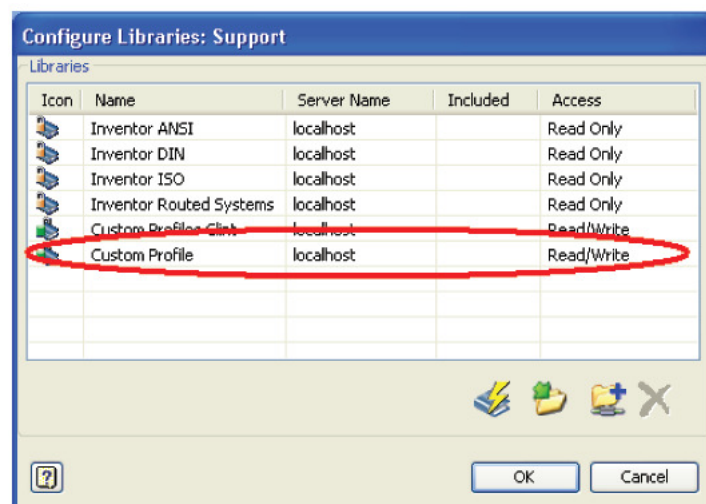
Click on the **Configure Contents Centre Libraries Icon**



Click on **Add Library**



You will see the library is added, Click **OK**



Make sure you save the changes to the project file. The library that you have added is now available in Inventor.