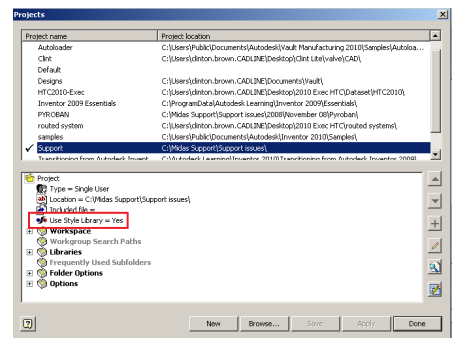


Creating Custom Materials in Inventor 2010/2011

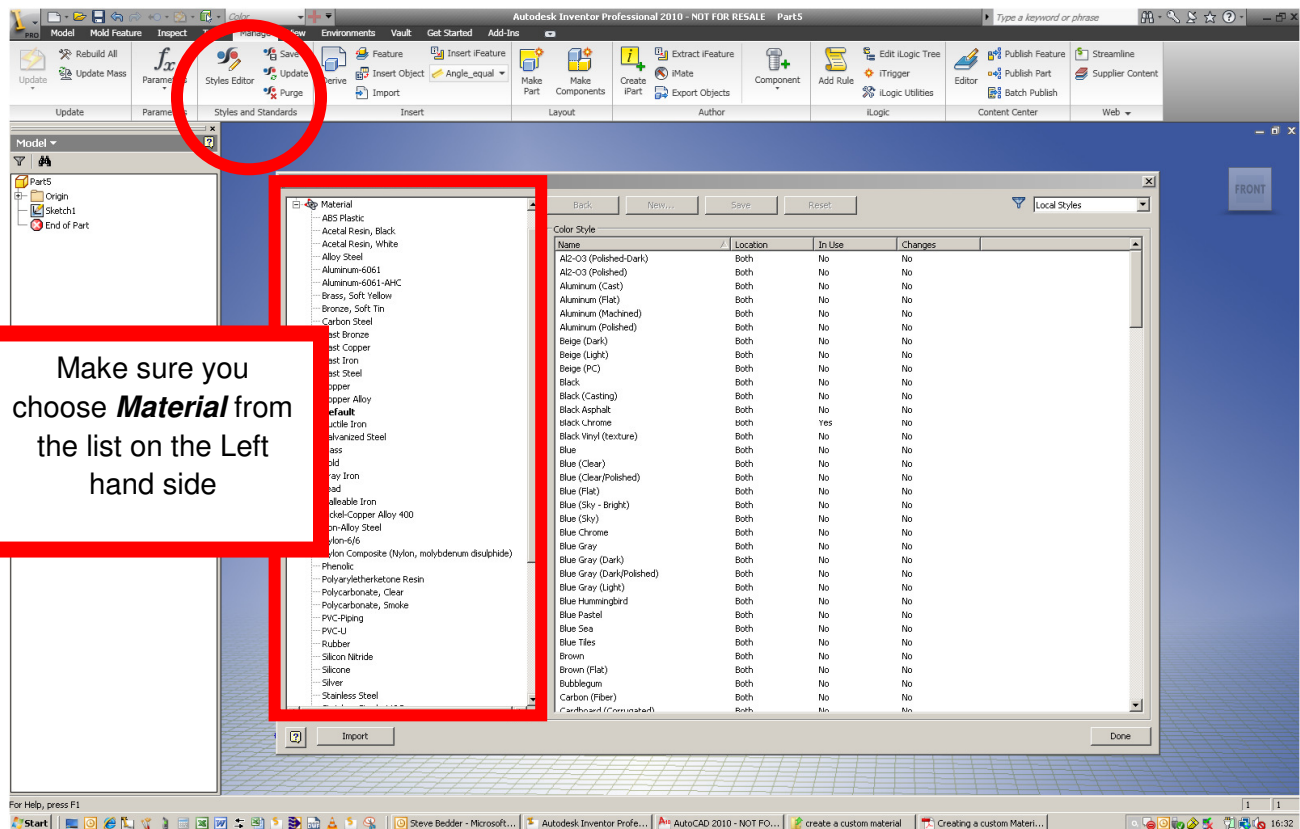
This White paper will guide you through a basic New material creation in Autodesk Inventor 2010/2011

Intermediate Inventor Users, Cad Managers

The first step, ensure that your project file has it's style library set to **yes**

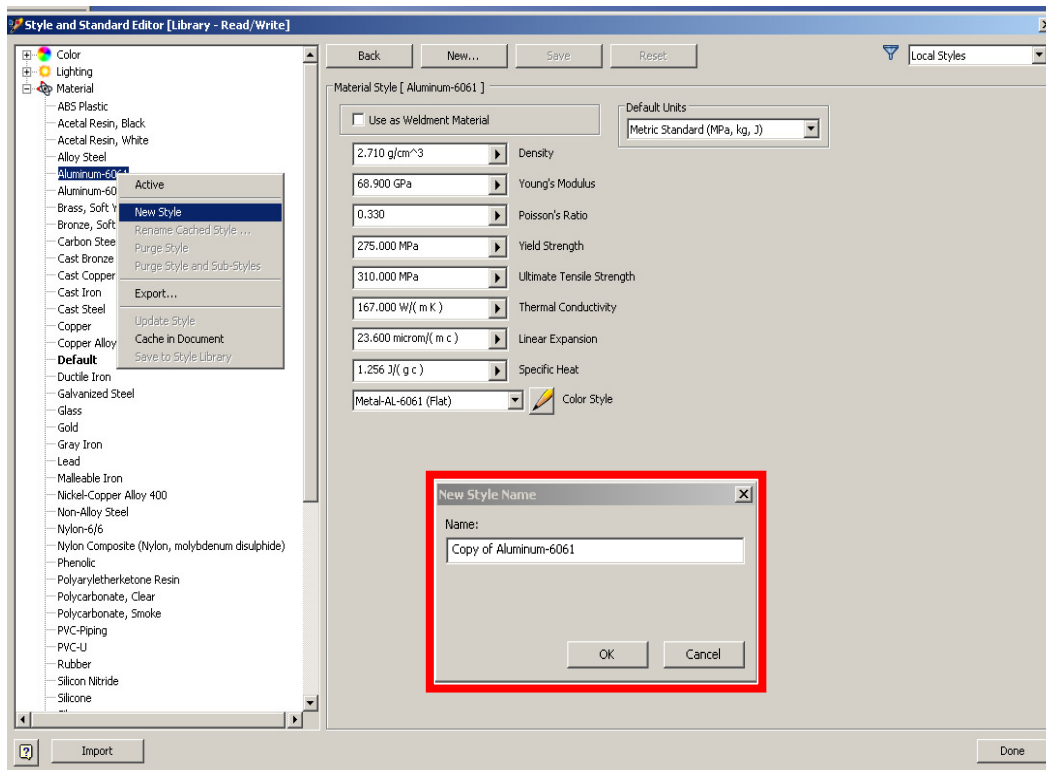


Create a new part in Inventor (ensure you exit the sketch). Click on the **Manage** Tab, then click **Styles Editor**



Make sure you choose **Material** from the list on the Left hand side

Choose a material to copy, **right click** on it and click on **New Style** - Fill in the new name and click on **OK**



Fill in the required Material properties, choose a colour and then click on **Save**. Repeat if necessary to add other materials.

The best advice is to save this part as a template. Default locations below;

C:\Program Files\Autodesk\Inventor (version #)\Templates (on Windows XP)

C:\Users\Public\Documents\Autodesk\Inventor (version #)\Templates (on Vista)

C:\Users\Public\Public Documents\Autodesk\Inventor (version #)\Templates (on Win7)

An alternative to this is to save the file as a template, as per the picture below.

