

# Installing Copy Design from SDK

The default installation of **Inventor** will install the **Inventor** Software Development Kit (**SDK**). This is broken into 2 parts, user tools and developer tools, we are going to look at installing the Copy Design utility, which is a user tool.

Advanced Inventor users, IT departments

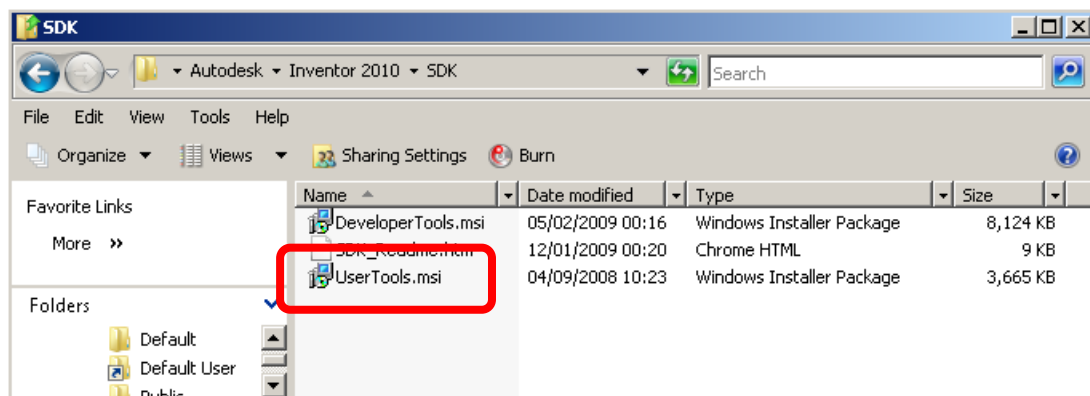
Please note that this is a Bonus tool and should be treated as BETA software, it may not work on all systems and is not supported. This utility will work on Inventor 2008, 2009, 2010 & 2011.

In your Windows Explorer, browse to the following location;

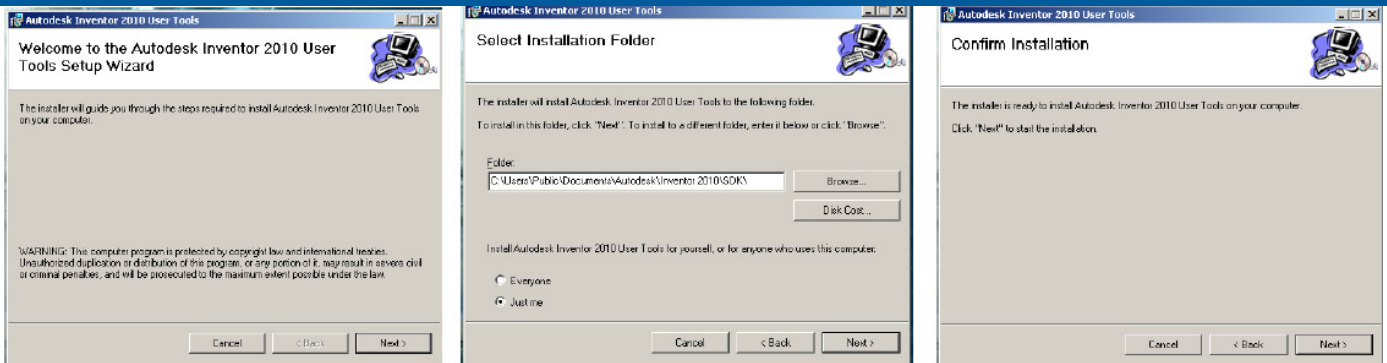
**Windows XP** - C:\Program files\Autodesk\Inventor XXX\SDK

**Windows Vista**- C:\Users\Public\Documents\Autodesk\Inventor XXX\SDK

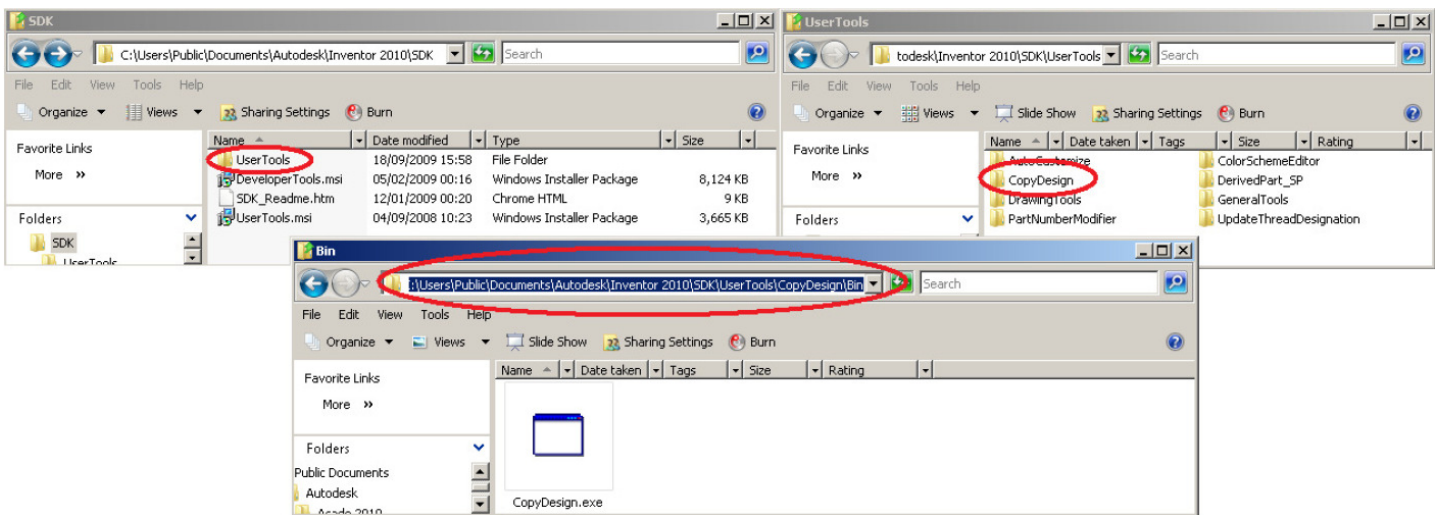
**Windows7** - C:\Users\Public\Public Documents\Autodesk\Inventor XXX\SDK



Install the User tools.msi by double clicking on the icon highlighted above. Then click next and then next and next again.



A folder called User Tools will be installed into the SDK folder. Inside that folder there is one called Copy Design. To run copy design, open the Copy Design folder, then open Bin and double click on the **CopyDesign.exe** icon.



If you are going to use this utility on a regular basis, it might be worth creating a desktop shortcut, this can be done by **right clicking** on the **CopyDesign.exe** and then selecting **Send to and Desktop (create shortcut)**

