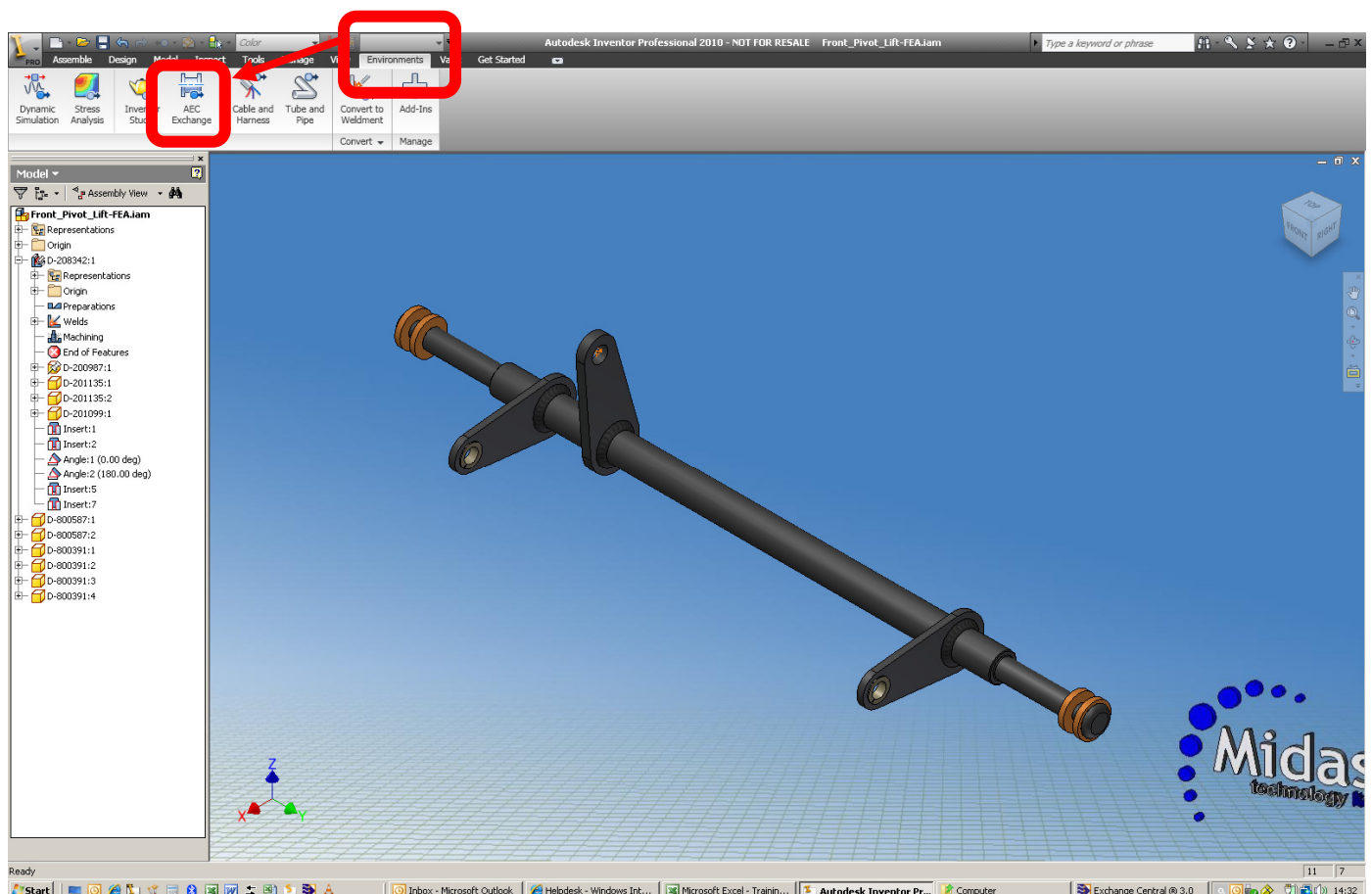


Saving your Inventor 2010/2011 Model as a Solid DWG 3D model

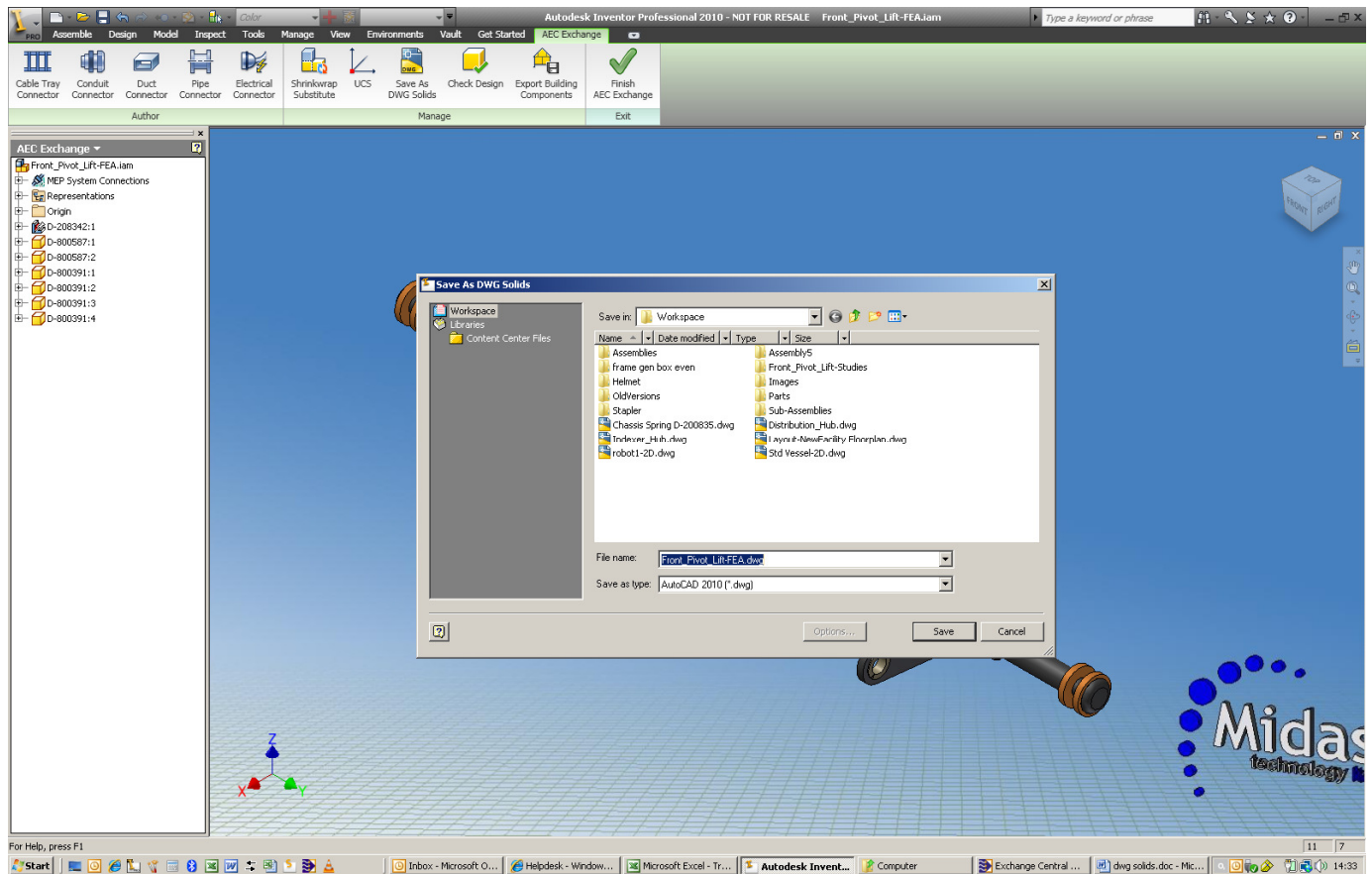
Inventor has the ability to save 3D models as DWG solids. This is achieved by utilising the built in AEC exchange facility within Inventor.

Intermediate Inventor Users,

In an Inventor part or Assembly, click on the **Environments** tab



Click on the **AEC Exchange** tab and then the **Save As DWG Solids** icon, choose a location and save the file.



Your DWG Solid can now be shared with AutoCAD users.