

# Using Pack 'n Go in Inventor 2010/11

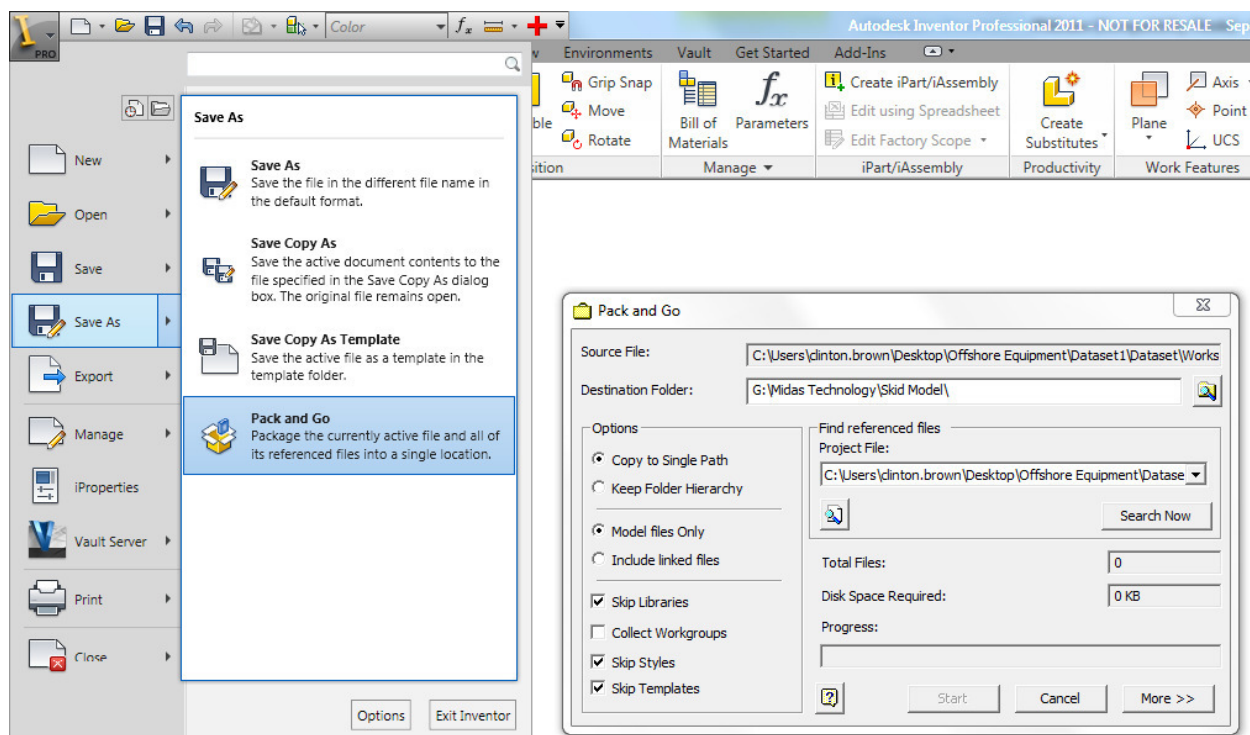
Guide as to the workings of the Inventor Pack and Go utility. This utility is used to gather all of the related documents in an Inventor DWG, IDW or IAM file and place them in one single location for sharing with other users by means of email, FTP or on CD/DVD etc.

All Inventor users.

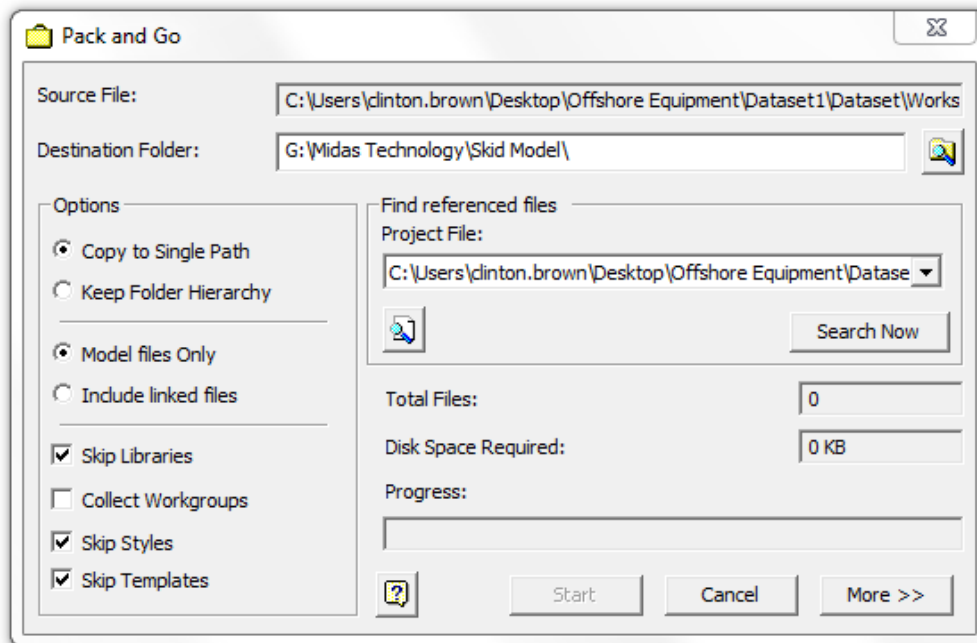
Please note that Pack 'n go works from the highest file level down, so a drawing will bring with it Assemblies and parts, an Assembly will bring with it sub-assemblies and all of the related parts.

The first thing you should do is to create a folder that the pack 'n go files will be copied to, this can be on your desktop or somewhere easy to find later.

Inside of Inventor Click on the **I** icon in the top left hand corner, then Click **Save As – Pack 'n Go**



This launches the Pack and Go dialogue box



Note that you can choose to include linked files, libraries, workgroups, styles and templates if you wish to. The preferences set above include the minimum requirements to send the design out to a 3rd party.

The destination folder specified above, should be mapped to the folder you created earlier.

Once you are happy with the settings outlined above, click on **Search Now** this will find the relevant Project file for the Assembly and or Drawing, next you click on **Start**, this will gather all of the files and Linked files and copy them into the Destination folder.

The files will be copied into the folder specified and can then be emailed on or copied as needed.

| Name               | Date modified    | Type               | Size |
|--------------------|------------------|--------------------|------|
| OldVersions        | 24/07/2009 15:32 | File Folder        |      |
| Workspaces         | 24/07/2009 15:32 | File Folder        |      |
| Assembly12.ipj     | 24/07/2009 15:32 | Autodesk Invent... | 6 KB |
| Assembly12.ipj.old | 24/07/2009 15:32 | OLD File           | 6 KB |
| packngo.log        | 24/07/2009 15:32 | Text Document      | 3 KB |