

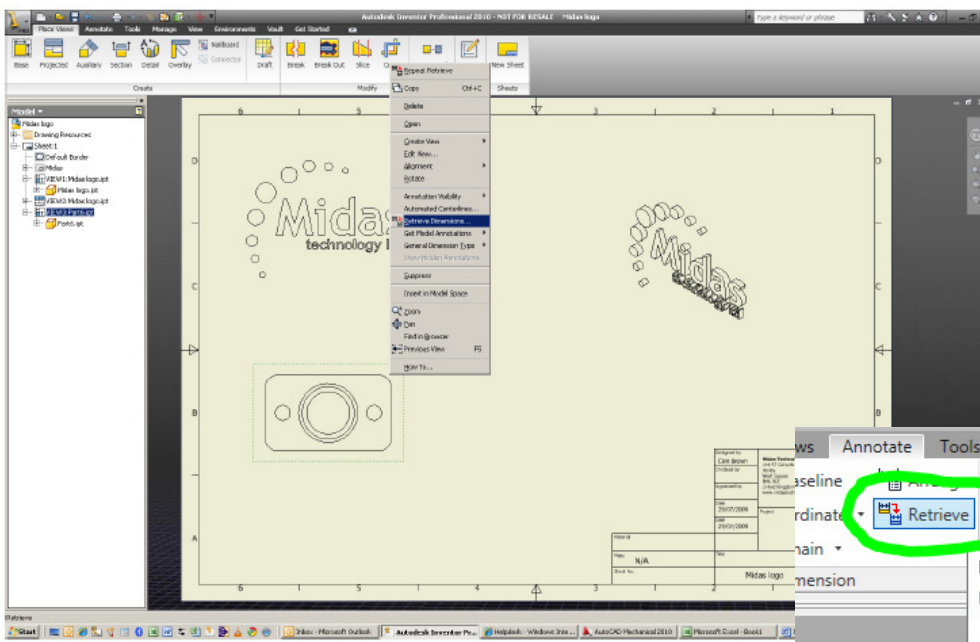
Retrieving model dimensions in Inventor

2010/2011 drawings

This White Paper will guide you through the process of retrieving model dimensions within the drawing environment. Note that although model dimensions can be retrieved, it is sometimes best practice to dimension the model taking into account the manufacturing process of the part

Inventor users, Inventor LT users

In the drawing environment, create the appropriate views.



There are 2 options;

Option1:

Right Click on the view and choose **Retrieve Dimensions**

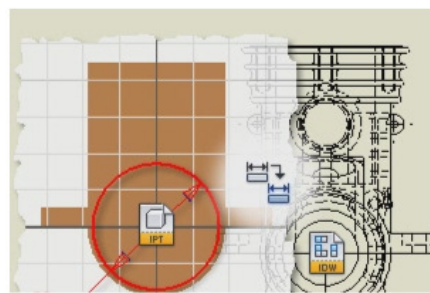
Option2:

On the **Annotate Panel**, click on **Retrieve Dimensions** and select the view

sources
Border
disc.ipt

Retrieve Dimensions
Retrieves model dimensions for use in drawing views.

Retrieves all sketch dimensions, all model dimensions, or only dimensions related to particular parts or features. You select the dimensions to display in the drawing view.



Press F1 for more help

