

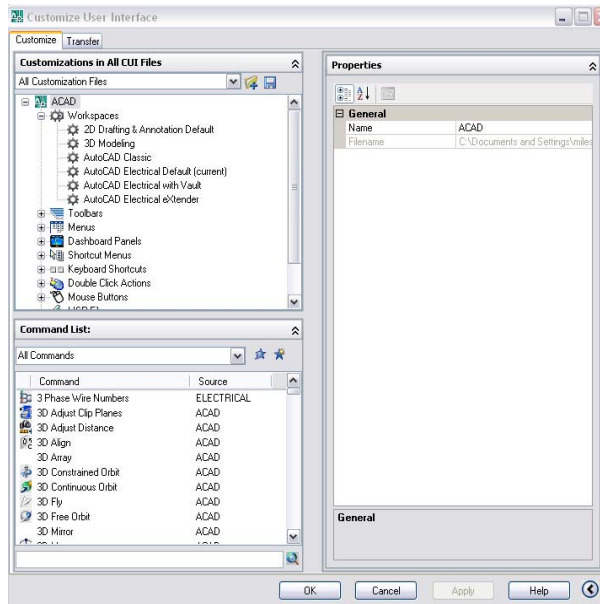
# Creating your own Toolbars

All AutoCAD Electrical Users


You can create your own toolbars for specific tasks. You might want a toolbar which has different SNAP values preset on as an example. This would facilitate the user to easily change snap values whilst in the drawing. However creating commands could be as simple as combining several commands together to automate a series of commands into one **power** function.

Rather than modifying the existing AutoCAD Electrical menus and toolbars, it is preferable that we add a new menu file so that it is easily transportable to other AutoCAD Electrical PC's and different versions of AutoCAD Electrical when released/ installed.

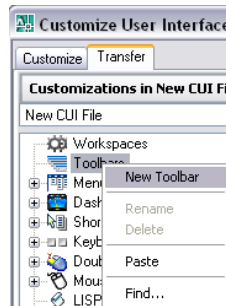
At the AutoCAD command line, type CUI. The following dialogue will appear:




Select the *Transfer* tab in the top left hand corner of the dialogue

Select the icon  *Create a New Customisation File*

Right click over the *Toolbars* option and select *New Toolbar*



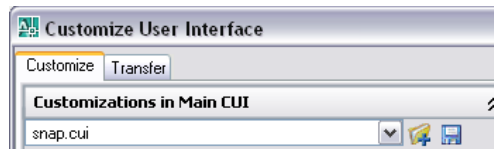
Change the default name of the toolbar to “*Snap*”


Select the icon  *Save the customisation File*

Browse to the C:\Program Files\Autodesk\ACADE 2008\Support directory or directory where AutoCAD Electrical is installed and *Save* the file as *SNAP.CUI*.

Select the *Customise* tab in the top left hand corner of the dialogue.

Ensure that the *SNAP.CUI* file is the selected CUI menu.



In the lower left corner of the dialogue, select the icon  *Create a New Command*

To create a command for a snap value of 10mm. Edit the following:

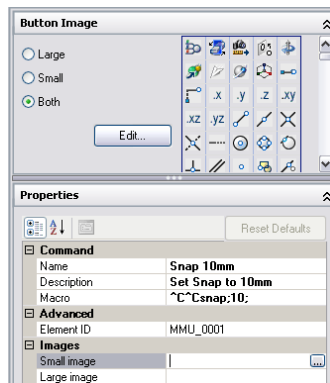
Name: Snap 10mm

Description: Set Snap to 10mm

Macro: ^C^Csnap;10;

(“;” represents a return character)

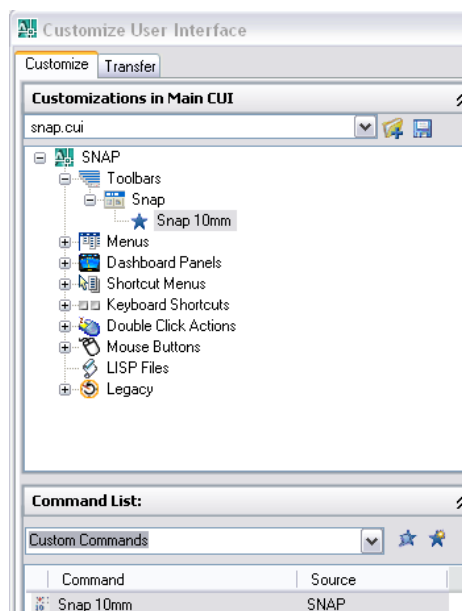
To the side of the option Small Image, select the icon [...] (Repeat for Large Image).



Browse to a suitable bitmap that you want to use. Bitmaps can easily be made in Microsoft Paint. The image file should be 16 x 16. Alternatively images could be downloaded from any free clipart web site. Images should be saved in the C:\Program Files\Autodesk\ACADE 2008\Support directory or directory where AutoCAD Electrical is installed.

Select *Apply* to ensure the command is saved correctly. This new command will then appear in the list of Custom Commands displayed in the dialogue.

Left click and hold down on the command and you can drag the command onto the toolbar displayed above (remember to keep holding the left button of your mouse).



You can repeat the process for other snap values such as 1.25,2.5,5 and OFF ensuring that you select Apply to save each new command.

Select the icon  *Save the customisation File*

The toolbar will then appear on your screen with the new commands.



T: 01784 419922

E: [sales@cadline.co.uk](mailto:sales@cadline.co.uk)

W: [www.cadline.co.uk](http://www.cadline.co.uk)

CADline Ltd, Northumberland House, Drake Avenue,  
Staines, Middlesex, TW18 2AP



T: 01293 774442

E: [sales@midastechnology.co.uk](mailto:sales@midastechnology.co.uk)

W: [www.midastechnology.co.uk](http://www.midastechnology.co.uk)

Midas Technology Ltd, Gatwick House,  
Peeks Brook Lane, Horley, Surrey, RH6 9ST