

# Creation of a New Part within the Manufacturers Parts Database

All Electrical Designer Users

We are going to show in this month's Tips and Tricks how to correctly create and define a new part within a manufacturers parts database.

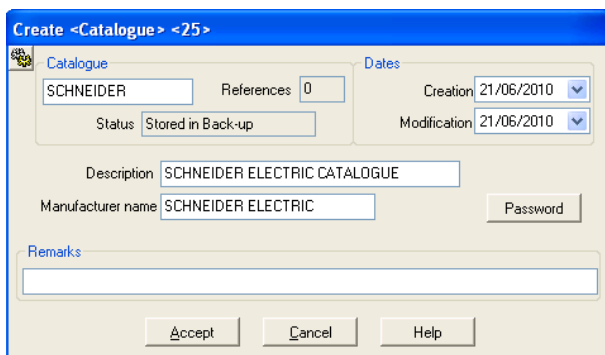
Accurate information is essential for accurate information to be supplied in the reports such as Bills of Materials.

From the Main Manager, select the *Catalogues* tab.

In this example, we are going to create a new catalogue called *Schneider* and also a new part.

Select  *New Catalogue*

Enter the details as shown in the following dialogue:

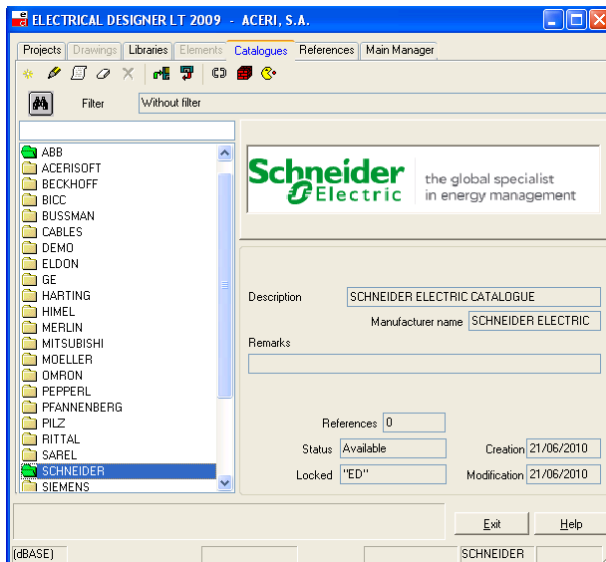


Select *Accept*

Open Internet Explorer and go to [www.schneider-electric.com](http://www.schneider-electric.com)

Right click on the Schneider Electric logo and *Save* the bitmap as CATALOG.BMP into the ...\\CA\\SCHNEIDER directory.

The Schneider Electric logo will now appear in the Catalogue selection tab.



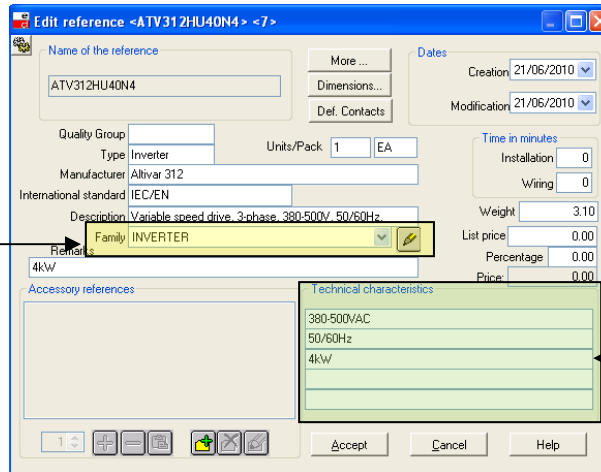
Select *References* tab

Select  *New Reference*


As this is a brand new catalogue, you only have the option of creating a brand new reference. However on an existing catalogue you can create a new reference from a *highlighted* existing reference

Select *Accept*

Fill in the reference card as shown in the dialogue:



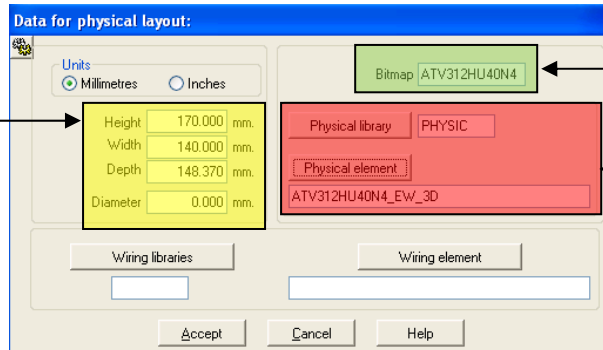
The Technical characteristics will be automatically annotated into the schematics when a part is assigned to a symbol.

The *Family*  allows the user to define the components classification. The same family can be assigned to the schematic symbol within your library thus ensuring that the correct parts are automatically filtered for their "paired" schematic symbols.

Select **More** if you wish to define further technical characteristics about the product. The more information you do provide the better reports such as Technical Data reports will be. This is extremely useful when producing technical data sheets for manuals.

Select *Dimensions*

Enter the details as shown in the following dialogue:



If the bitmap image file name is the same as the part reference it does not have to be entered in this dialogue. If however the same image is used for several parts then it has to be entered into the dialogue. The image has to be a JPG or BMP file and should be saved in the catalogue directory ...CA\SCHNEIDER. The image is saved from the manufacturer's website (as per the catalog logo above)

The height, width, depth information is used to calculate the area and volume of components assigned within a cubicle. If the *Physical element* is left blank, ED automatically creates a 3D model from the height, width and depth information.

A footprint must be placed in a physical library within ED. In this instance, we have downloaded a 3D footprint from [www.traceparts.com](http://www.traceparts.com) and imported it into the *PHYSIC* library. The footprint overrides the dimension information when creating a panel layout

Select *Accept*

Select *Accept* again

The part will now be shown in the *References* tab.

