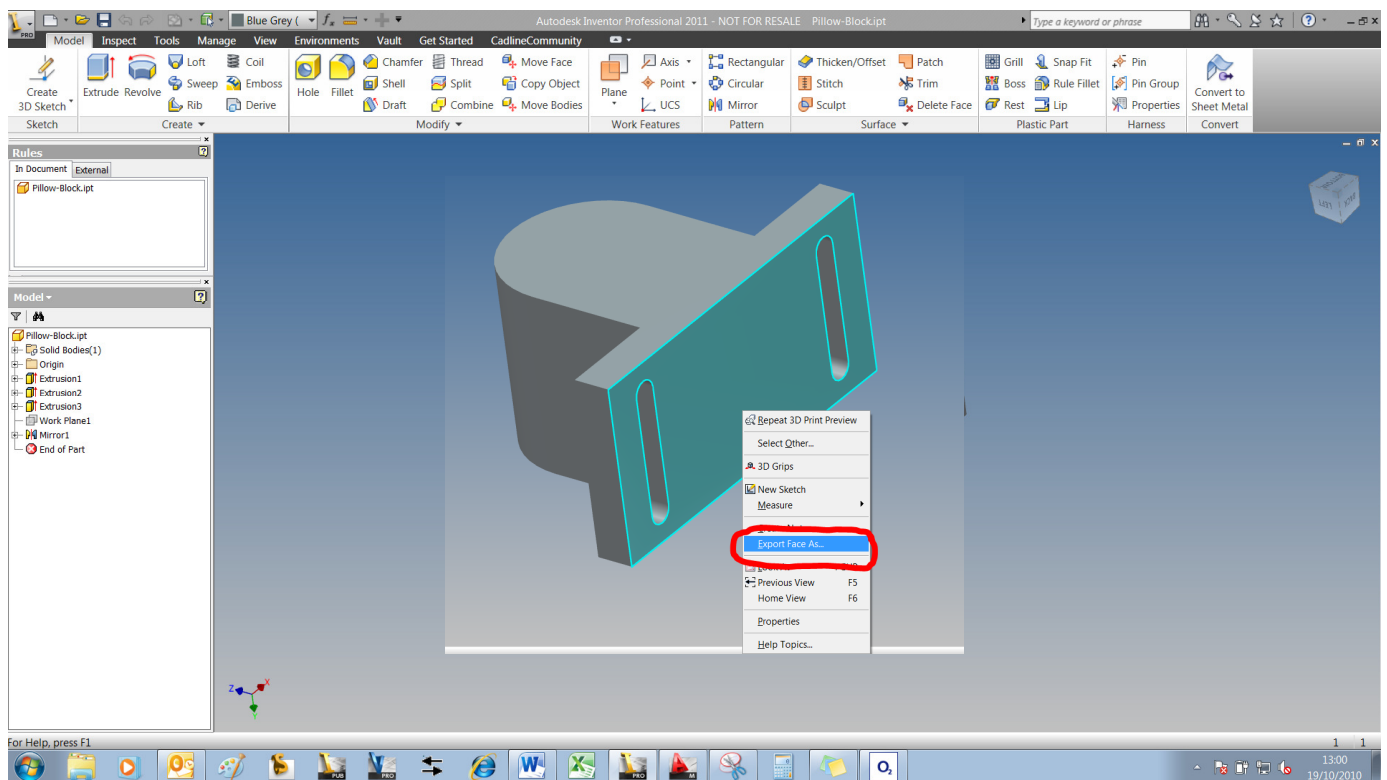


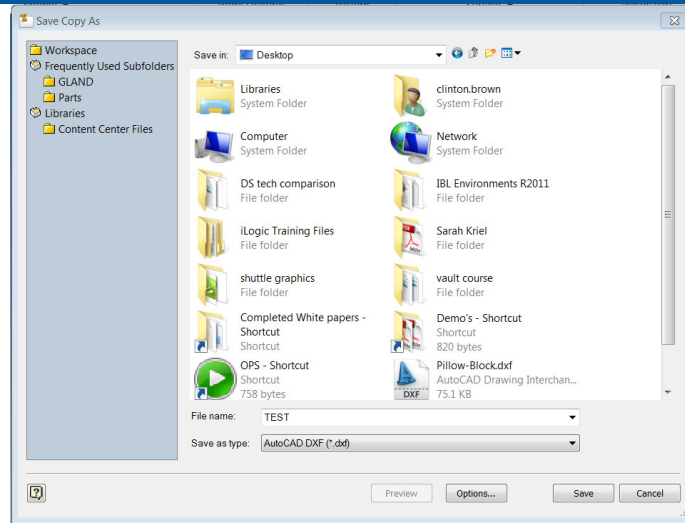
# Inventor 3D Faces export to 2D DXF or DWG

In some design practices, it is necessary to create 2D profiles from certain faces of 3D models. This is particularly helpful when creating gaskets or profiles for laser and water jet cutting.

Inventor users

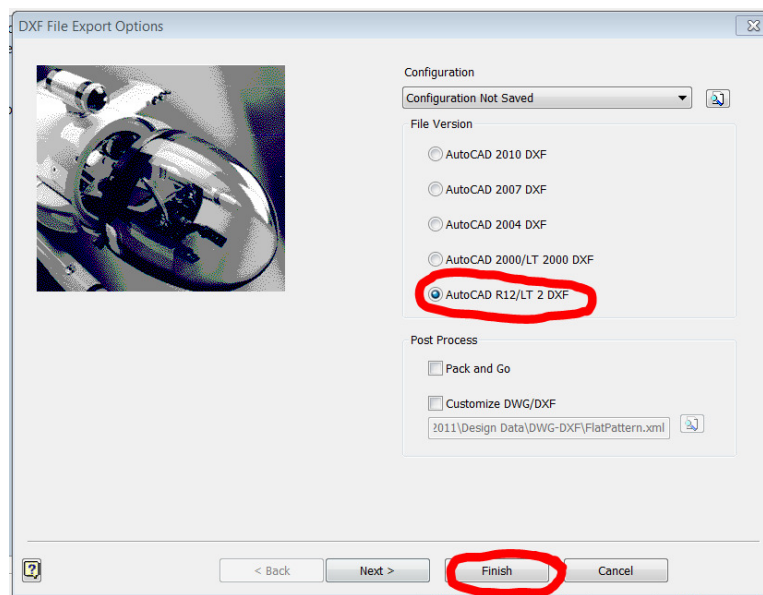


From your 3D model, **right click** on the face that you want to export, then select **Export Face As**



Give the file a **name** (I've called this example TEST. Choose a file format, in this example, I have chosen **DXF**

Click on **Options**



Select the file version you want, in this example I have chosen **AutoCAD R12/LT 2 DXF**. The reason for choosing this, is so that the file will be easily compatible with older cutting packages, then click **Finish**

Click on **Save**

The result on the Right is the profile opened up in AutoCAD

