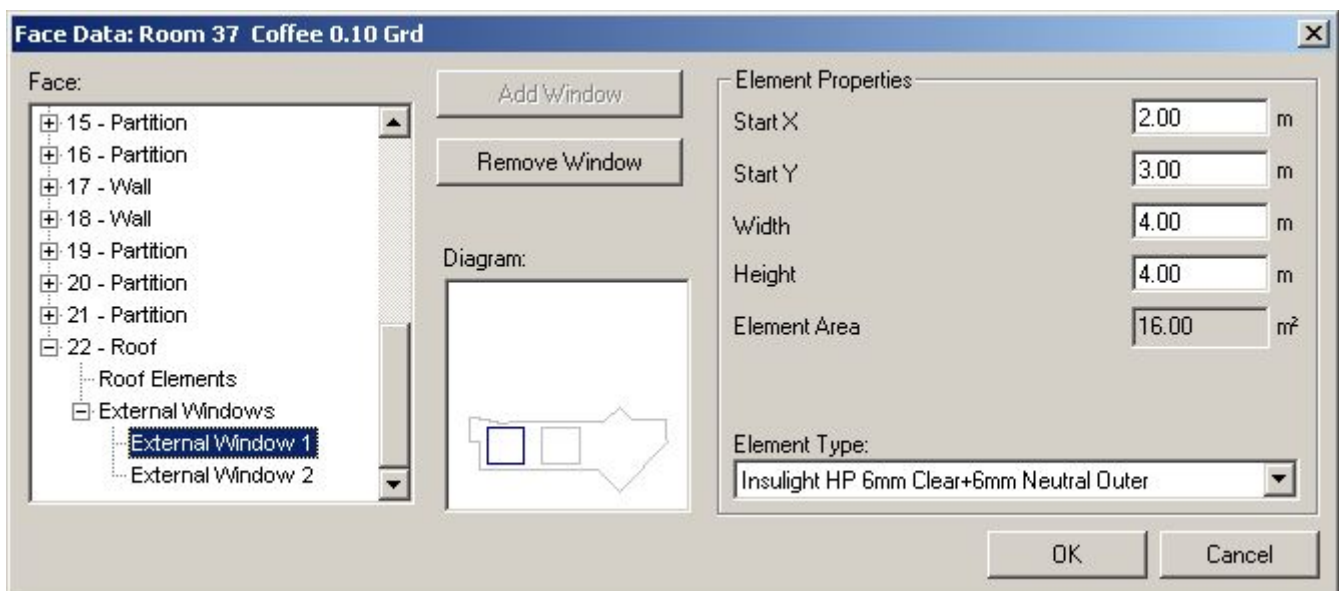


Inserting Rooflights

Cymap Users

The problem is that the error message is misleading, it is not too big, it is simply encroaching the roof boundaries. The best way to insert rooflights is to measure the X & Y coordinates from the dialog diagram below, e.g. entering 1,1 would place the rooflight over the edge of the roof. Use Cymap measure command to measure the X & Y dimensions from the virtual 0,0 datum. For the Width & Height, enter 0.1 & 0.1 so that you have a good chance of avoiding the roof boundaries. These can then be increased in size depending on how they are displayed in the Diagram.

Tip: Don't click OK after each incremental change as this will close the dialog. Click back to External windows and then back to External Window 1 to view the changes made.



If this does not help resolve, please Use the Cymap Email facility (right click on the problem file in the Cymap opening screen) to send the complete project to customer.services@cadline.co.uk for investigation.



T: 01784 419922
E: sales@cadline.co.uk
W: www.cadline.co.uk

CADline Ltd, Northumberland House, Drake Avenue,
Staines, Middlesex, TW18 2AP



T: 01293 774442
E: sales@midastechnology.co.uk
W: www.midastechnology.co.uk

Midas Technology Ltd, Gatwick House,
Peeks Brook Lane, Horley, Surrey, RH6 9ST