

Configuring Desktop Content 2010/2011

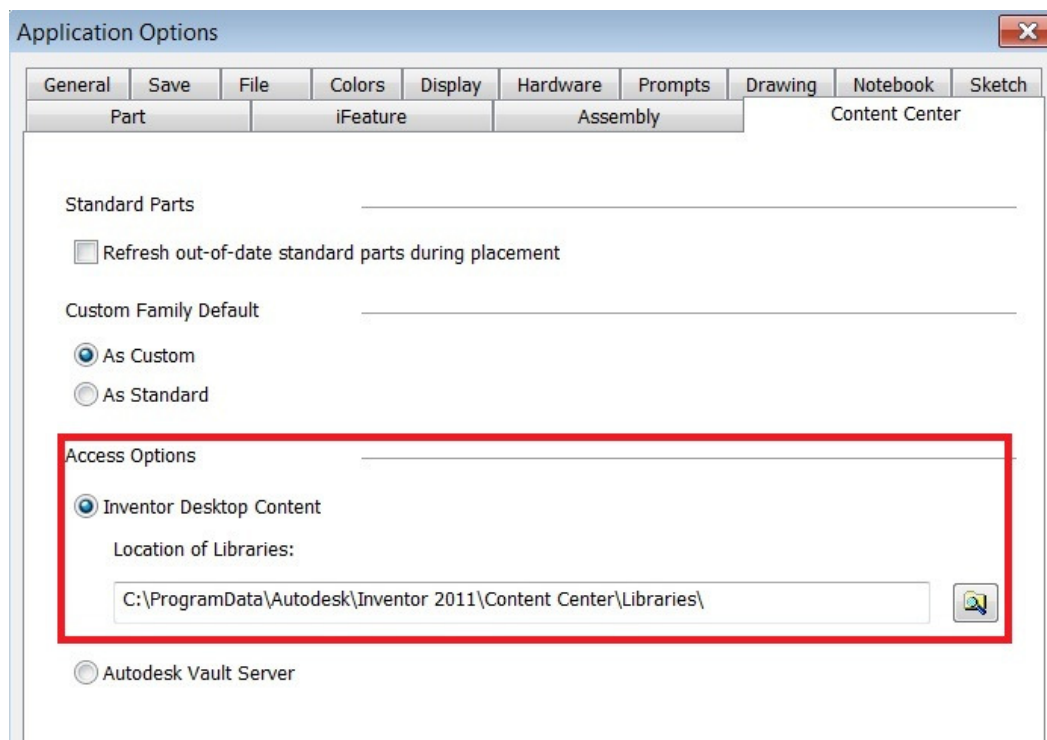
After you have installed Inventor 2010/2011, there are a few steps you can take to ensure that your Inventor Desktop Content is working.

Basic to Intermediate Inventor Users

Once you have installed Inventor 2010/2011 and the Desktop Content, you may need to check a few things in order to get the Content Centre working.

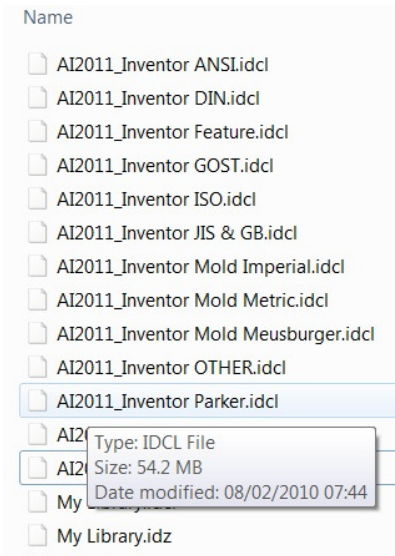
First of all, check your Inventor **APPLICATION OPTIONS**.

Under the **CONTENT CENTER** tab, ensure that the **ACCESS OPTIONS** are set to 'Inventor Desktop Content'.

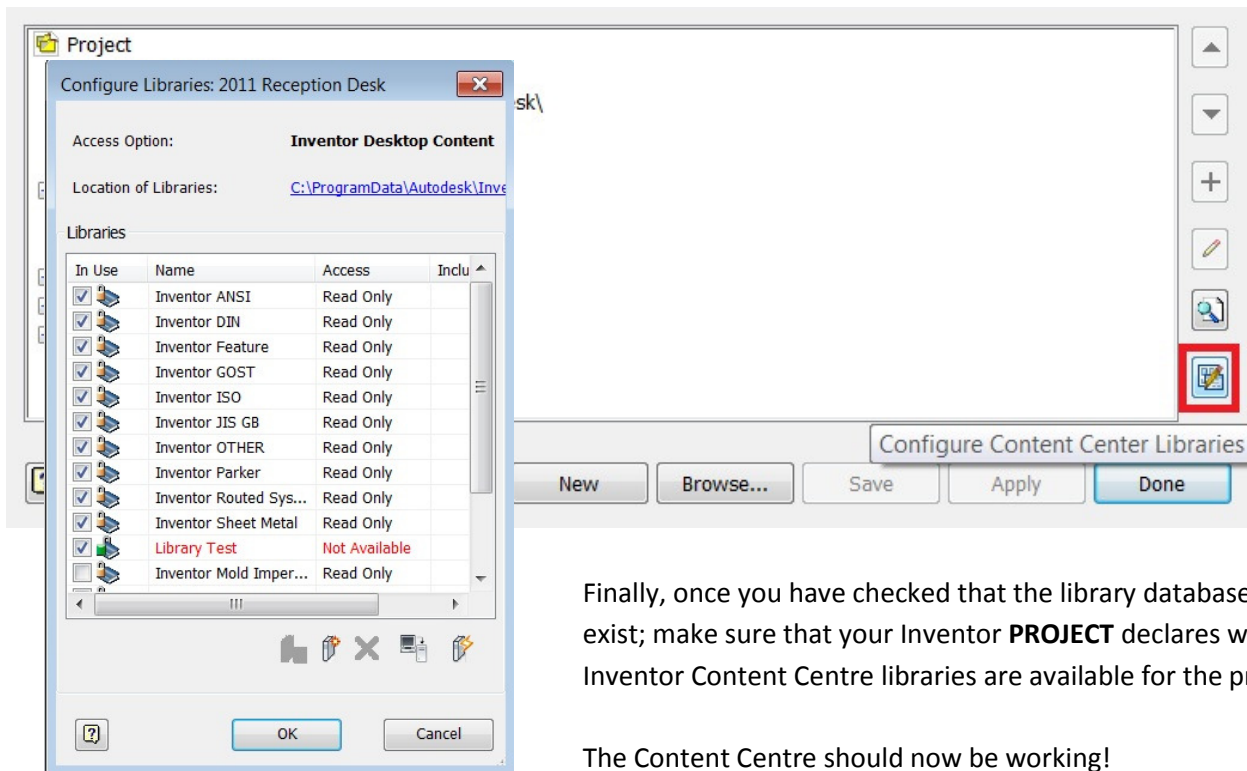


If you are using Autodesk Vault, you can still use Inventor Desktop Content, but please refer to white paper 'Configuring Content Centre with Autodesk Vault'.

Check that the **LOCATION OF LIBRARIES** path points to where the library database files are...



Using Windows Explorer, you should find a number of **IDCL** files. One for each Standard that you installed. There will also usually be one called 'My Library' which can be used for any custom content that you create.



Finally, once you have checked that the library database files exist; make sure that your Inventor **PROJECT** declares which Inventor Content Centre libraries are available for the project.

The Content Centre should now be working!