

Vault Copy Design and Renaming

This is a tip when using **COPY DESIGN** in Vault and renaming the copied design files easily to something that 'replaces' a certain string.

Intermediate to Advanced Inventor and Vault Users

I have had a few questions relating to using **COPY DESIGN** in Vault and being able to 'rename' the copied design files easily to something that 'replaces' as certain string. Using Vault **COPY DESIGN** will only add a Prefix, Suffix or Increment numbers to the new copies of the files.

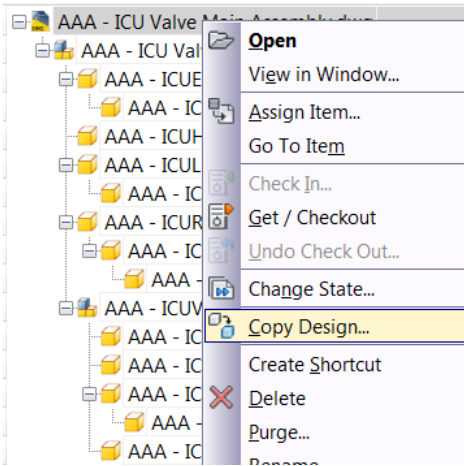
For example, if you need a copy of a certain design and all its related files, but you would rather 'replace' AAA to BBB below (another customer name).

File Name	Revision	State (Historical)	Created By	Checked In	Comment
AAA - ICU Valve Main Assembly.dwg			Administrator	14/02/2011 ...	Move File
AAA - ICU Valve Main Assembly...			Administrator	14/02/2011 ...	Move File
AAA - ICUENDCP.ipt			Administrator	14/02/2011 ...	Move File (\$/Des...
AAA - ICUHOUSG.ipt			Administrator	14/02/2011 ...	Copy of file 'ICU...
AAA - ICUHOUSG.ipt			Administrator	14/02/2011 ...	Copy of file 'ICU...
AAA - ICULBUTN.ipt			Administrator	14/02/2011 ...	Move File (\$/Des...
AAA - ICUHOUSG.ipt			Administrator	14/02/2011 ...	Copy of file 'ICU...
AAA - ICURBUTN.ipt			Administrator	14/02/2011 ...	Move File (\$/Des...
AAA - ICULBUTN.ipt			Administrator	14/02/2011 ...	Move File (\$/Des...
AAA - ICUHOUSG.ipt			Administrator	14/02/2011 ...	Copy of file 'ICU...
AAA - ICUVALVEASSY.iam			Administrator	14/02/2011 ...	Move File (\$/Des...
AAA - ICUORING.ipt			Administrator	14/02/2011 ...	Copy of file 'ICU...
AAA - ICUSPRNG.ipt			Administrator	14/02/2011 ...	Copy of file 'ICUS...
AAA - ICUVALVE.ipt			Administrator	14/02/2011 ...	Move File (\$/Des...
AAA - ICUHOUSG.ipt			Administrator	14/02/2011 ...	Copy of file 'ICU...
AAA - ICUWhatever.ipt			Administrator	14/02/2011 ...	Copy of file 'ICU...

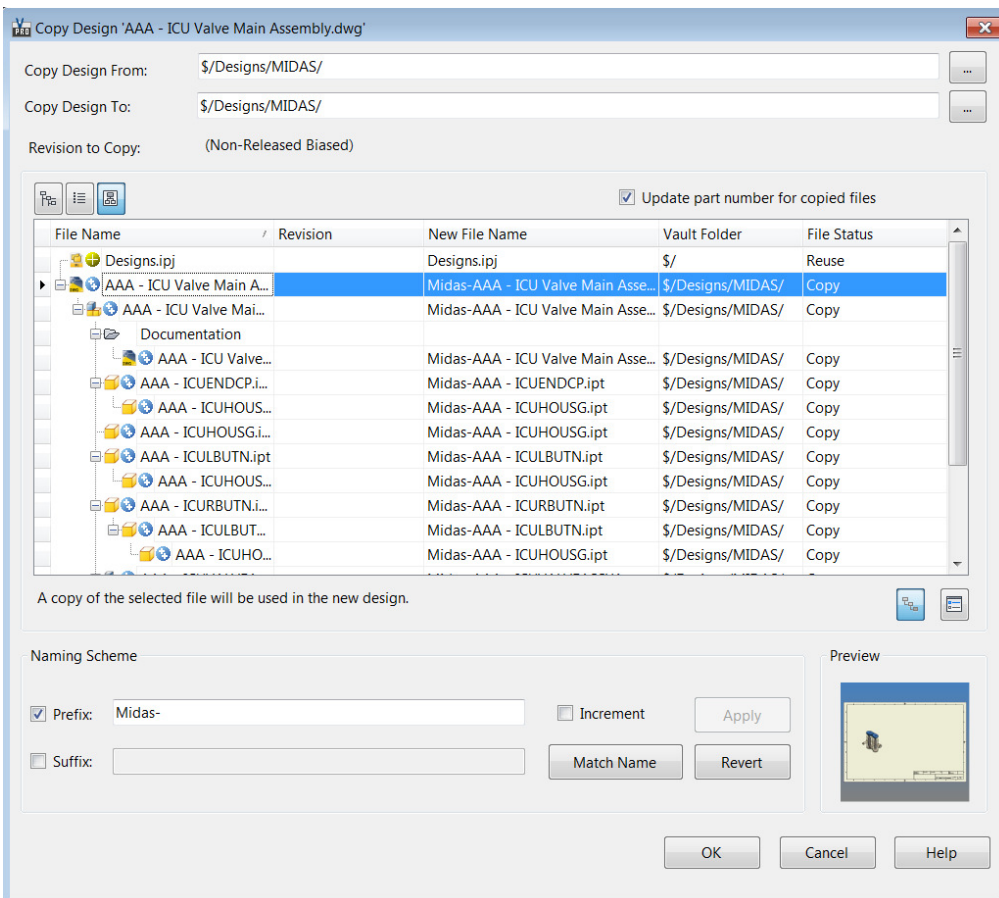
With Vault **COPY DESIGN** you can manually change each file to any name you choose and Vault will maintain all file references, however this can be very time consuming if you have a large design made up of hundreds of files. Doing each filename separately, you may as well use the Inventor **Design Assistant**. Well not really, but you know what I am getting at.

SOLUTION

1. First use **COPY DESIGN** to make the copy of the files you need.



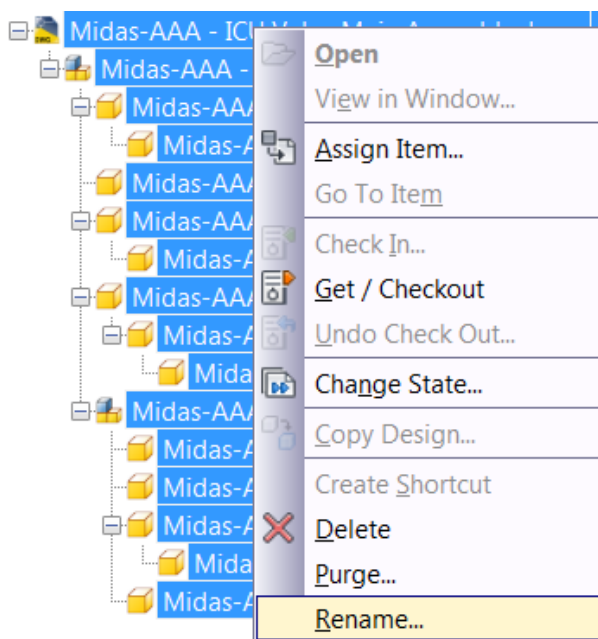
2. Add a **PREFIX** or a **SUFFIX** to the design files being copied. In my case I am using 'Midas'.



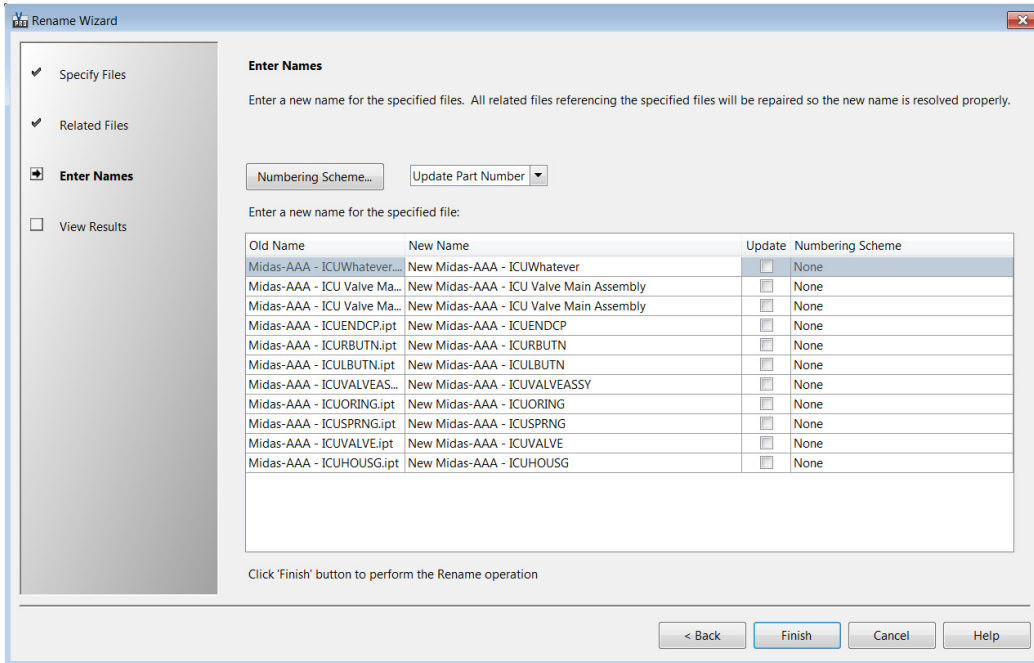
3. The results would be a 'copy' of the design with all its related files and references resolved.

File Name	Revision	State (Historical)	Created By	Checked In	Comment
Midas-AAA - ICU Valve Main Assembly.dwg			Administrator	14/02/2011 ...	Copy of file 'AAA...
Midas-AAA - ICU Valve Main Assembly.ia...			Administrator	14/02/2011 ...	Copy of file 'AAA...
Midas-AAA - ICUENDCP.ipt			Administrator	14/02/2011 ...	Copy of file 'AAA...
Midas-AAA - ICUHOUSG.ipt			Administrator	14/02/2011 ...	Copy of file 'AAA...
Midas-AAA - ICUHOUSG.ipt			Administrator	14/02/2011 ...	Copy of file 'AAA...
Midas-AAA - ICULBUTN.ipt			Administrator	14/02/2011 ...	Copy of file 'AAA...
Midas-AAA - ICUHOUSG.ipt			Administrator	14/02/2011 ...	Copy of file 'AAA...
Midas-AAA - ICURBUTN.ipt			Administrator	14/02/2011 ...	Copy of file 'AAA...
Midas-AAA - ICULBUTN.ipt			Administrator	14/02/2011 ...	Copy of file 'AAA...
Midas-AAA - ICUHOUSG.ipt			Administrator	14/02/2011 ...	Copy of file 'AAA...
Midas-AAA - ICUVALVEASSY.iam			Administrator	14/02/2011 ...	Copy of file 'AAA...
Midas-AAA - ICUORING.ipt			Administrator	14/02/2011 ...	Copy of file 'AAA...
Midas-AAA - ICUSPRNG.ipt			Administrator	14/02/2011 ...	Copy of file 'AAA...
Midas-AAA - ICUVALVE.ipt			Administrator	14/02/2011 ...	Copy of file 'AAA...
Midas-AAA - ICUHOUSG.ipt			Administrator	14/02/2011 ...	Copy of file 'AAA...
Midas-AAA - ICUWhatever.ipt			Administrator	14/02/2011 ...	Copy of file 'AAA...

4. Now select all the files and use the **RENAME** tool in Vault to rename the files on mass.

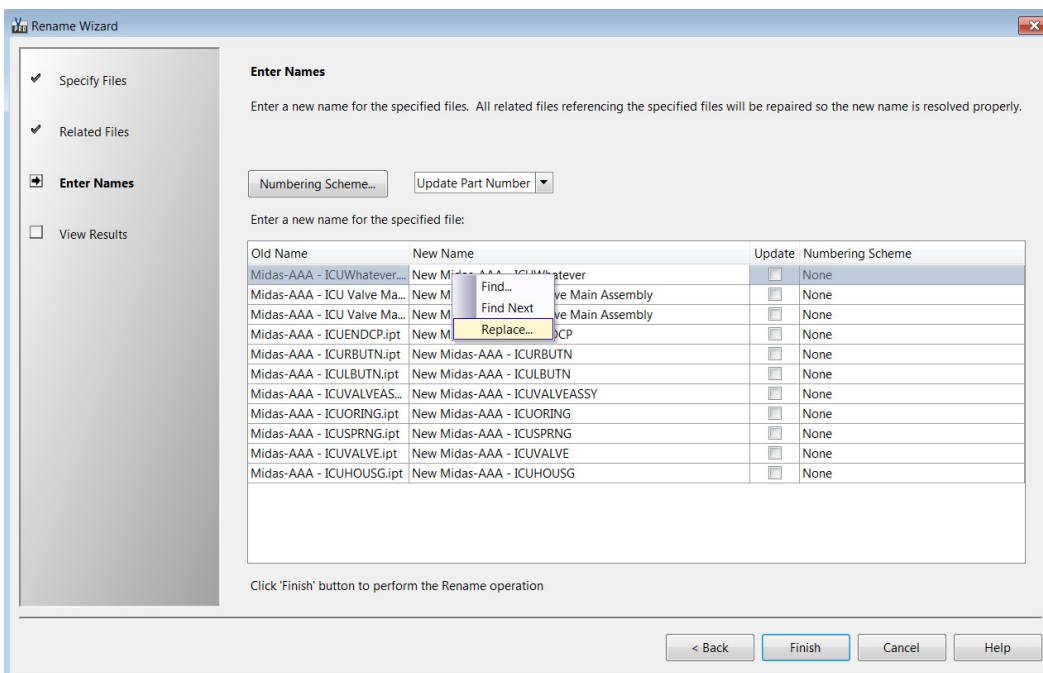


- In the **RENAME** wizard, use **NEXT** twice until you get to the final screen where you can specify the names of the files.

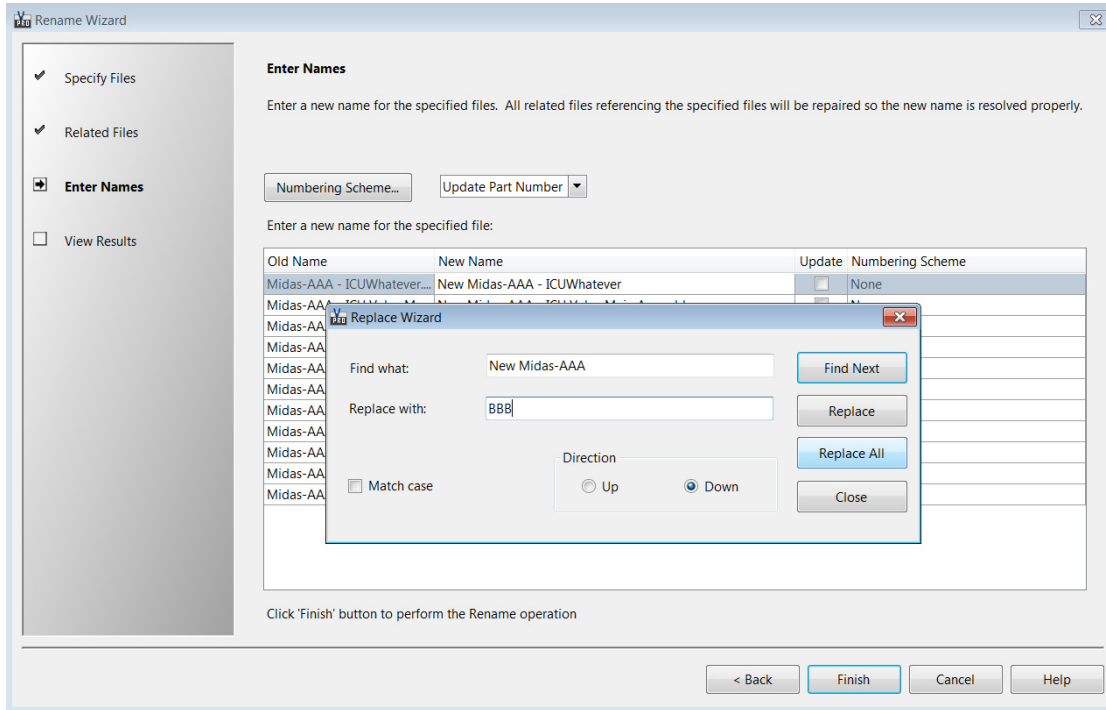


6. Okay.... So hears the Trick!

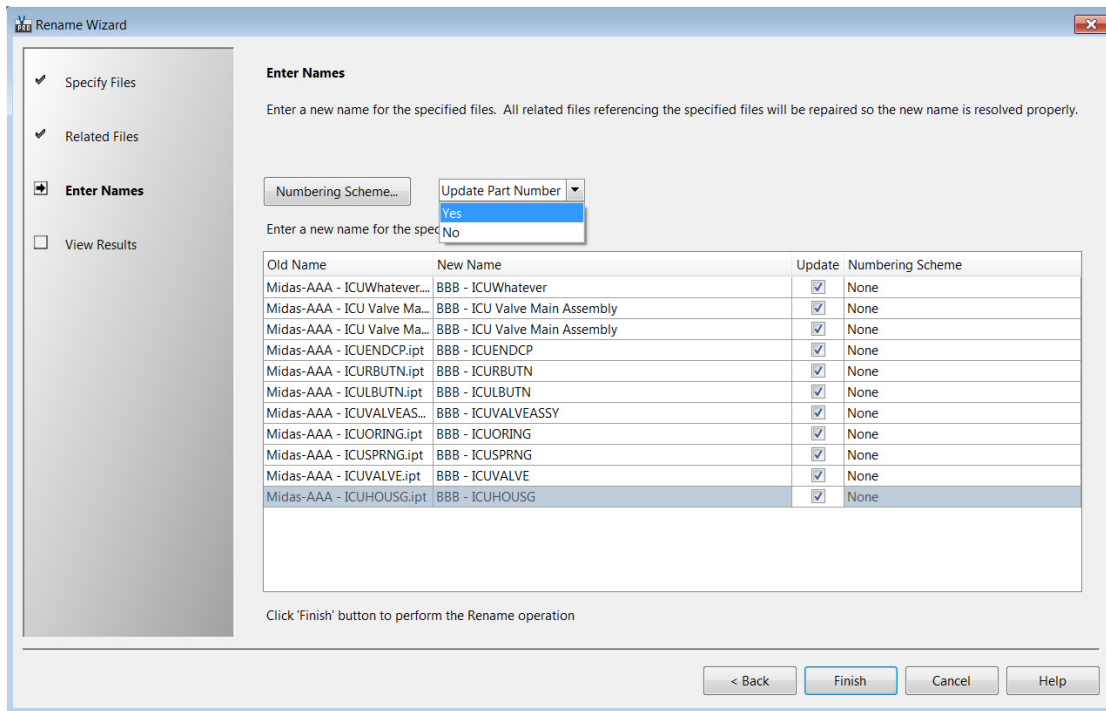
In the column that you use to manually rename each file, you can Right-Click and select **'REPLACE'**



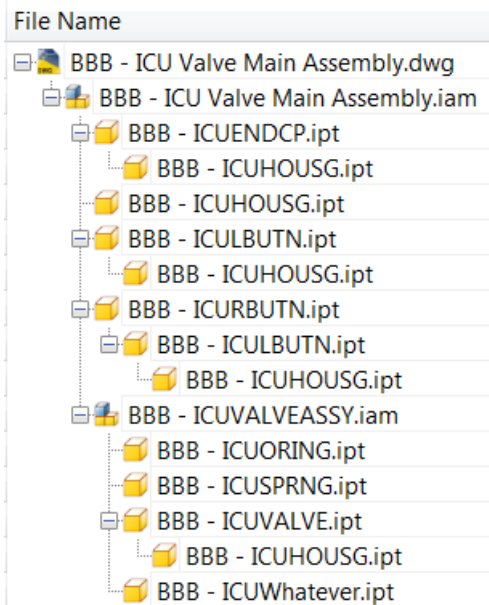
- You are now presented with a Search and Replace wizard, and here you can search and replace all name occurrences with whatever you need. I'm using BBB.



- Finally, if you wish, select the 'Update Part Numbers' to update the iProperties in all the Inventor design files and then select Finish.



9. Job done! ☺



A very easy and quick process!

Apart from all the other benefits of **Performance**, **Security**, **Searching** capability and **Version** control, this is another great reason to implement Autodesk Vault in your design team.

COPY DESIGN, **RENAME** and **REPLACE** are fantastic tools to manage your files and maintain links to all reference files.