

# Globally Changing Drawing Card Information

## AutoCAD Electrical

When a client requests a slight change to the title border information or when you have made a spelling mistake, changing several or indeed several hundred drawings title border information can be a time-consuming process. However, in AutoCAD Electrical this does not need to be done one by one and the information of the drawing record cards can be edited globally and externally to AutoCAD Electrical.

Right click over the IEC60617 demo project or one of your existing projects and *Activate*

Select the *Import/Export Data* ribbon tab

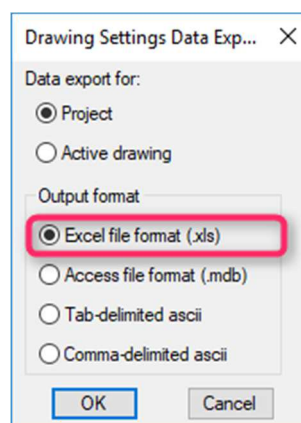


Select *To Spreadsheet*

Select  *Drawing Settings*

Select

Select the options as shown:



Select

Select


Select 

Browse to a temporary directory

Select 

Open the spreadsheet and make some changes. In this example, we have changed the *IEC\_P* value

(DWGN\A) SEC	SUBSEC	SH	SHDWGN	IEC_P	IEC_J	IEC_L	DWGDES\DWGDES\DWGDES\ (FULLFILENAME)
001		1	1	P1234		M	MACHINE LAYOUT
002		2	2	P1234		MC	POWER DISCONNECT
003		3	3	P1234		MC	DC POWER SUPPLY
004		4	4	P1234		MC	MAIN DRIVE
005		5	5	P1234		MC	AUXILIARY DRIVE
006		6	6	P1234		MC	VACUUM PUMP
007		7	7	P1234		MC	AUXILIARY DRIVE
008		8	8	P1234		MC	COMMUNICATIONS
009		9	9	P1234		MC	PLC I/O RACK ARRANGEMENT
010		10	10	P1234		MC	PLC I/O RACK 1 / SLOT 1 AB-1C
011		11	11	P1234		MC	PLC I/O RACK 1 / SLOT 1 AB-1C
012		12	12	P1234		MC	PLC I/O RACK 1 / SLOT 2 AB-1C
013		13	13	P1234		MC	PLC I/O RACK 1 / SLOT 2 AB-1C
014		14	14	P1234		MC	PLC I/O RACK 1 / SLOT 3 AB-1C
015		15	15	P1234		MC	PLC I/O RACK 1 / SLOT 3 AB-1C
016		16	16	P1234		MC	PLC I/O RACK 1 / SLOT 4 AB-1C
017		17	17	P1234		MC	PLC I/O RACK 1 / SLOT 4 AB-1C
018		18	18	P1234		MC	PLC I/O RACK 1 / SLOT 5 AB-1C
019		19	19	P1234		MC	PLC I/O RACK 1 / SLOT 6 AB-1C
020		20	20	P1234		MC	EMERGENCY STOP CIRCUIT
021		21	21	P1234		MC	SAFETY CIRCUIT
022		22	22	P1234		MC	CONTROL WIRING
023		23	23	P1234			OPERATOR STATION LAYOUT
024		24	24	P1234			MAIN CABINET LAYOUT
025		25	25	P1234			TERMINAL GRAPHICAL LAYOUT
T01		26	4	P1234			TERMINAL TABULAR LAYOUT
T02		27	4	P1234			TERMINAL TABULAR LAYOUT
T03		28	4	P1234			TERMINAL TABULAR LAYOUT
T04		29	4	P1234			TERMINAL TABULAR LAYOUT

Select  to save the spreadsheet



From

Select **Spreadsheet** *From Spreadsheet*

Browse to the temporary directory

Select 

Select the options as shown

Update Drawings per Spreadsheet Data

Update drawings per spreadsheet data file. Process:

Project

Active drawing

Force spreadsheet new values to upper case

Flip any updated Tag/Wire Number values to "Fixed"

Select 

Select 

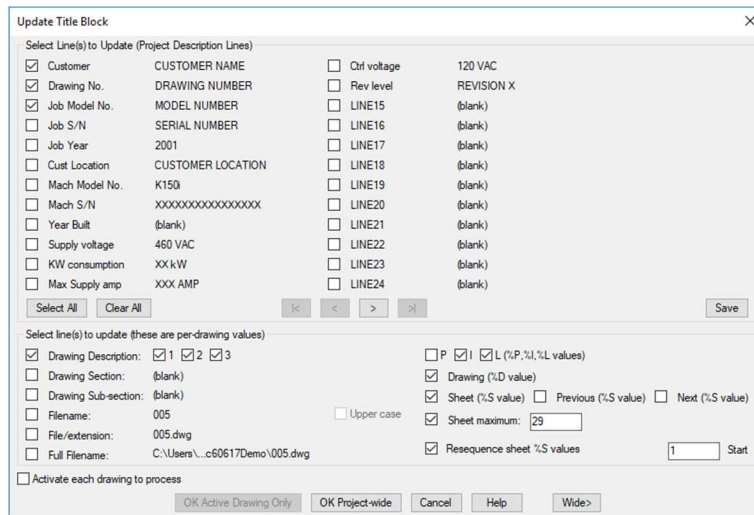
Select

All the drawing record cards will be updated

However, if you wish any of the changes to be annotated into the title border itself, you must perform a *Title Block Update*. This will then update mapped title border attributes

Right click over the activated project > *Title Block Update*

Ensure the correct fields for updating are selected



Select

Select

Select