

Cross-reference Annotations

All Electrical Designer Users

How do you reposition the cross-reference annotations?

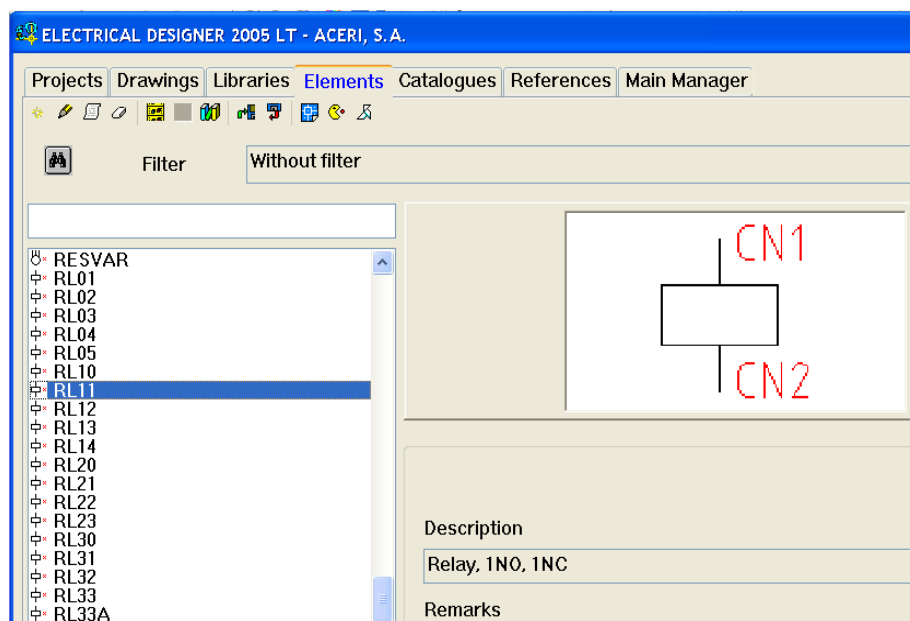
There are three methods depending on whether the move is permanent for a single component, for all devices of that type or whether it is a temporary move.

1. *Permanent move for all devices of that type:*

Highlight the library that the element is contained in e.g. BS

Select the Elements Browser

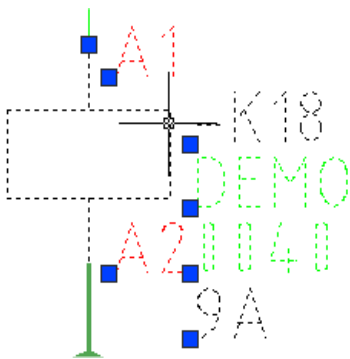
Highlight the element that you wish to edit




Double-click on the element to go into the symbol. Using AutoCAD's Move command, move the XR_MAIN attribute to where you want the new position to be. End the drawing using the End Drawing/Element command



2. *Permanent move for a single device in a drawing:* Go into the schematic drawing where the symbol exists. Left-click on the graphics of the coil (as an example) and NOT the contacts displayed underneath. Blue squares will appear (called grips).



Left-click on the blue grip just above the annotated contacts and it will turn red. Drag your cursor to a different position and the grip will move. When an update of cross-references  is performed the annotated contacts will move location to the position of the moved grip.

3. *Temporary move for a single device in a drawing:* Use AutoCAD's move command available from the Modify dropdown and select just the annotated contacts. Move them to a different position. These contacts will however reposition back to their original location when an analysis of cross-references is performed.