


Filtering Drawings in Electrical Designer

All Electrical Designer Users

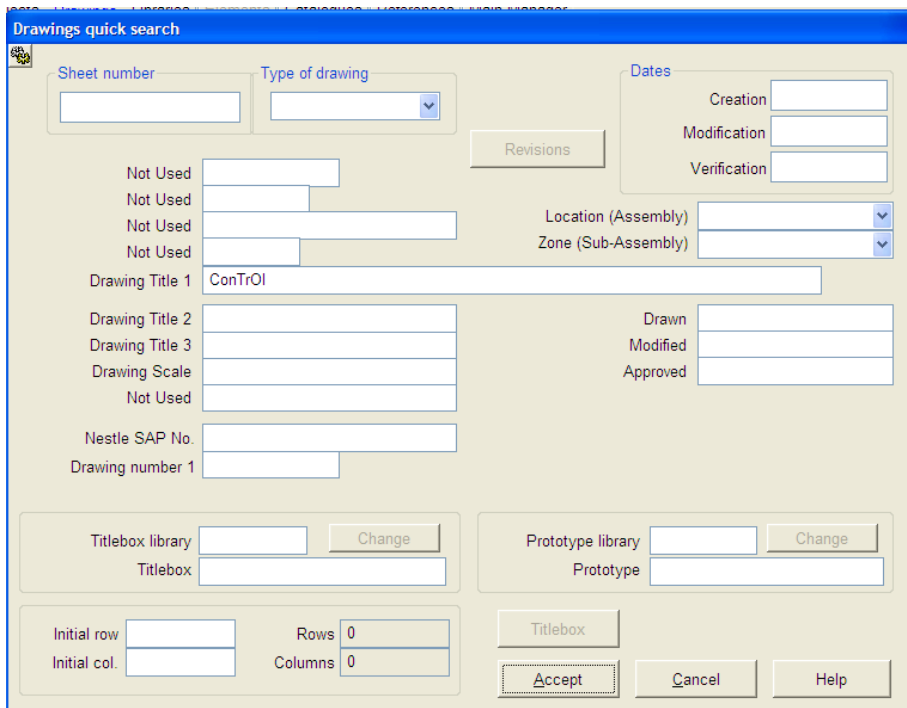
There are several ways to filter drawings. Two are highlighted in this document.

1. Drawings can be filtered by means of a key value
2. Drawings can be filtered by a pre-defined filter

Drawings can be filtered by means of a key value


From the Drawings Browser, select the option Fast Find 

Here the Edit Drawing dialogue will open

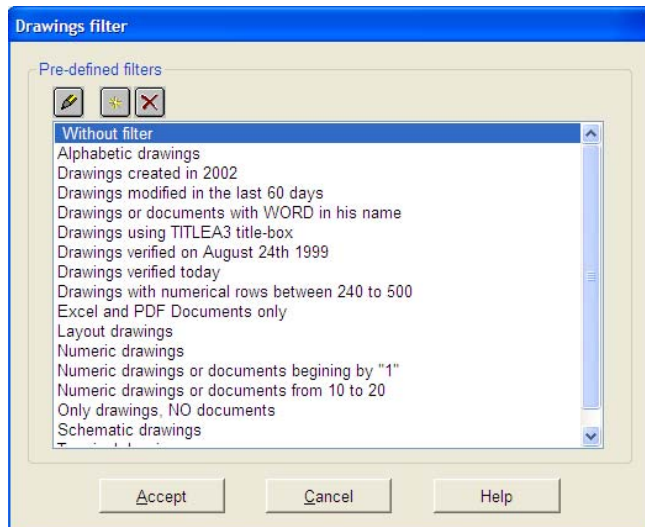


By typing any key value into one of the fields, Electrical Designer will search on the key values.

Drawings can be filtered by a pre-defined filter

From the Drawings Browser, select the option Filter 

The following dialogue box will be shown



By highlighting one of the existing filters, such as Schematic drawings, a filter will automatically filter the drawings on schematic drawings only. Existing filters may be highlighted and edited or new filters may be created from existing ones. For example, the filter

Numeric drawings or documents from 10 to 20 has a filter string of

```
9 < VAL(PLANOS->NAME ) .AND. 21 > VAL(PLANOS.NAME)
```

Changing the character 9 to another number such as 14 will then mean that the filter will only show drawings 15-20 inclusive.

Obviously the description should change in order that you have a detailed record of your filters.

It is recommended that you contact technical support in regards to any specific filters that you may wish to create.