



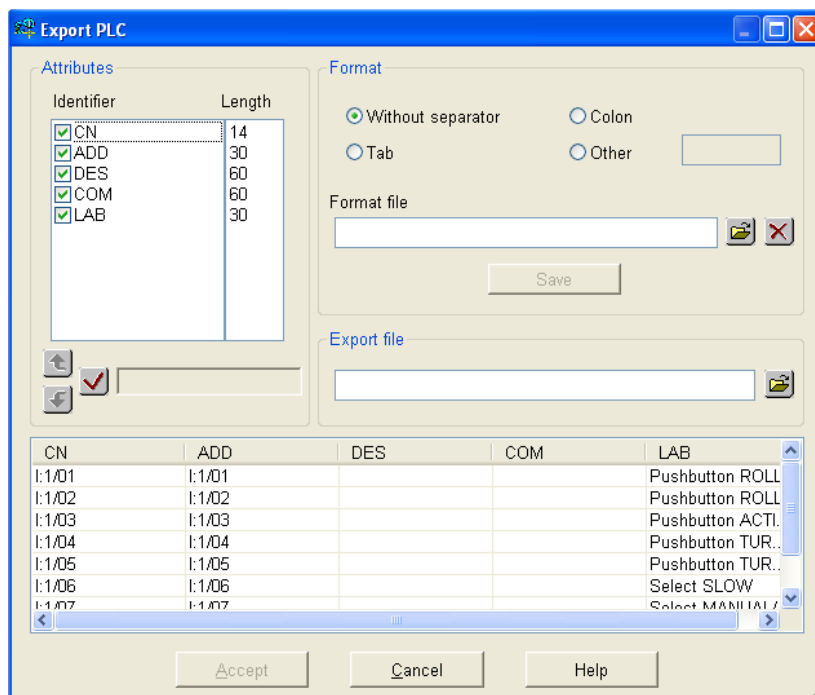
# Exporting PLC I/O address information from Electrical Designer into a manufacturer's PLC programming software

All Electrical Designer Users

The command  EXPLC is used to export information from Electrical Designer as an ASCII text file so that it may be used to import into any manufacturer's programming software.

Select  from the PLC Toolbar. You will be prompted to select the PLC slot. Select the graphics of the PLC slot within the schematic.

The following dialogue will appear:



The user is able to select an existing export format file or create a new one.


The Attribute section allows the user to define the PLC attributes to be exported i.e. Pin (CN#), Address (ADD#), Comment (COM#), Label (LAB#) and Description (DES#), and its order in the format file. The attributes can be enabled or disabled, moved in position and the field length specified. Load is used to save a newly created format file or to load an existing one. The format files extension is FMT and is saved within the \f directory. This file is an ASCII file that includes the names, order and sizes of the I/O information.

The user then has to specify an export file name and a location as to where the information is going to be written.

**In this example, we will export into Allen Bradley's RS\_Logix format.**

Select the option  to the side of *Format File*.

Choose the *AB\_EXP.fmt* file from the ED\*2005\F directory. Select *Open*.

Select the option  to the side of *Export File*. Specify the directory where you wish the information to be saved e.g. C:\Temp\ and the file name e.g. ab\_export.txt

Then select *Accept* to exit the command.

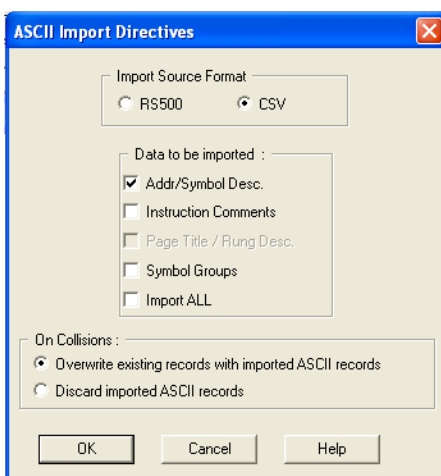
Different PLC programming software have different ways of importing this type of information so some trial and error may be required.

Once RS\_Logix is opened, create a new project: *File – New*

Specify the processor and select *OK*

From the *Tools* dropdown, select *Database* and then *ASCII Import*

The following dialogue will appear or similar:



Select the options as shown and then select *OK*.

Browse to the *ab\_export.txt* file that you saved earlier (**search on all file types**).

The address and description information will now be shown in the Address/Symbol Editor within the PLC software.



T: 01784 419922  
E: [sales@cadline.co.uk](mailto:sales@cadline.co.uk)  
W: [www.cadline.co.uk](http://www.cadline.co.uk)

CADline Ltd, Northumberland House, Drake Avenue,  
Staines, Middlesex, TW18 2AP



T: 01293 774442  
E: [sales@midastechnology.co.uk](mailto:sales@midastechnology.co.uk)  
W: [www.midastechnology.co.uk](http://www.midastechnology.co.uk)

Midas Technology Ltd, Gatwick House,  
Peeks Brook Lane, Horley, Surrey, RH6 9ST