

One Symbol For All Contactors & Relays!

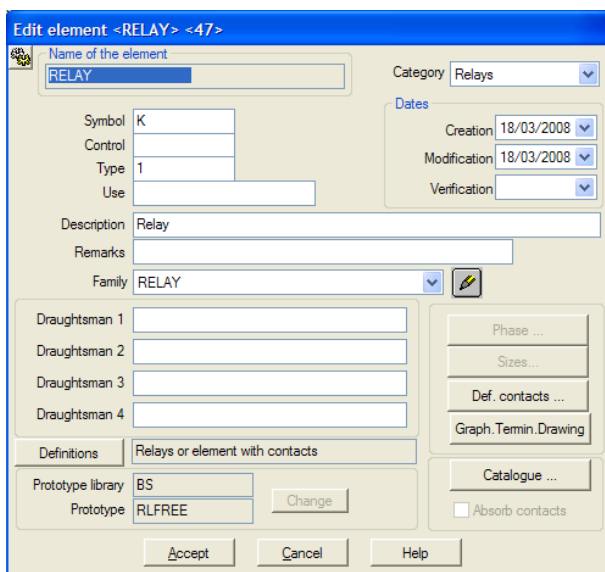
All Electrical Designer Users

In past versions of Electrical Designer, where a user wanted to have a 2 NO/NC relay and they already had inserted in the drawing a 2NO / 1NC relay, you would use the command *Swap Element* to swap out, as an example, a RL21 for a RL22. However this was not changing the manufacturer's data and was only changing the actual symbol itself. The user would then have to change the manufacturer and part by using the command *Define Parts* or by *Set Catalogue & Record*.

Assigning pin contacts to the manufacturer's part information allows a different approach to the above as the symbol is not tied to any number of contacts. This means that instead of several symbols for relays or contactors with a different contact arrangement, you could just have one symbol!

A relay or contactor can be defined so that its contact arrangement is not specific.

As an example, create a new symbol in your default library of the same name as shown and assign the same values as shown in the dialogue below:



N.B. You could differentiate between a contactor and a relay by having another symbol if you wished.

You can also specify a preferred catalogue and record but this would be unwise for this type of “independent” relay.

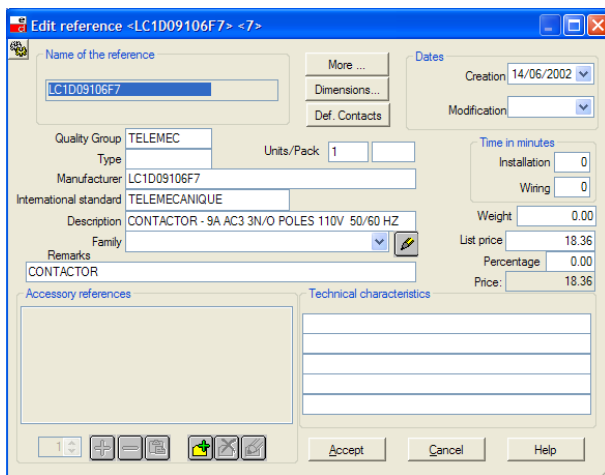
Select *Accept* to save any changes.

Select the *Catalogues Browser* and then highlight the manufacturer TELEMEC.

Select the reference of LC1D09106F7.

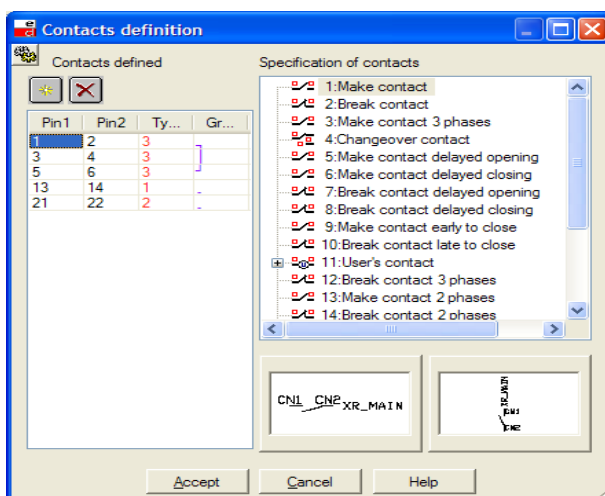
Select  *Edit Reference*

The following dialogue will be shown:



Select *Def. Contacts*

Define the contacts as shown:



Select *Accept* and *Accept* again to apply the changes.

Start a new project. In the Project Record card, select the option *Analysis*. Ensure that Use reference contacts is ticked.

N.B. A project cannot be a mixture of relays with contact information defined in the symbol and contact information defined in the catalogue reference. However a project can be updated from one to the other.

Create a new Scheme drawing and insert the *new* relay. When placing, ensure that *Set Catalogue & Record* and *Set Function* are ticked. When a contact is then placed, the contact will pick up the pin termination information from the part reference.