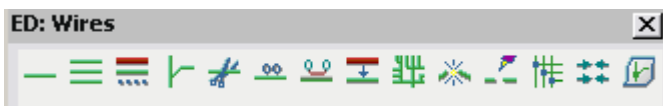


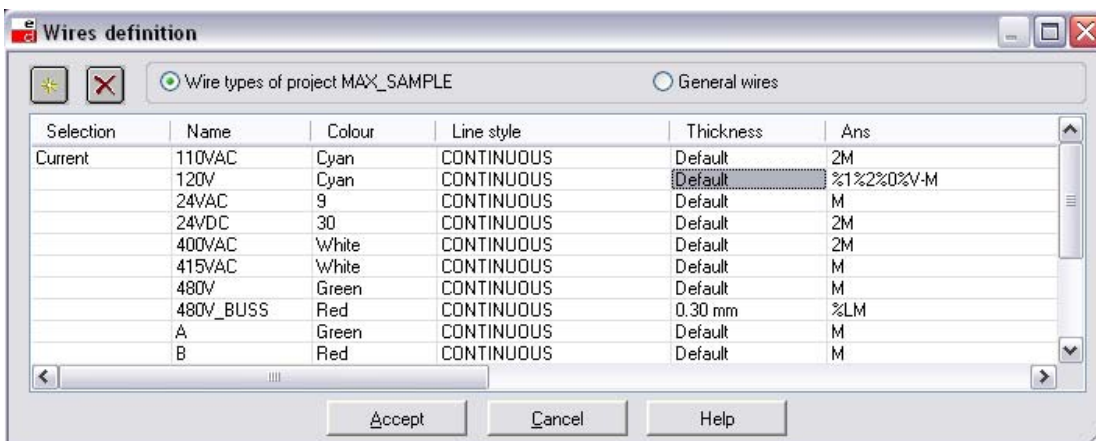
Wire Types, Colour & Size Marking

All Electrical Designer Users

From the Wires toolbar:



Select the option  Wire Type. The following dialogue or similar will be displayed:



This dialogue is of great importance to the correct running of a project with relation to the wire types. It is broken down into two main sections: *Wire types of a project* and *General wires*.



This check box will show you the wires that are contained in your project; you can have different wires specified for every project that you create.

General wires

This check box will allow you to view your wires default data. The wires contained here, are the wires that will be added to every *new* project that you create.

You are able to enter as many wire types as necessary in General Wires with each wire type having their own wire colour, line style, thickness, ANS, ANS Mark, Wire Type e.g. BS6231 etc.

Every new project created will always use the General Wires and therefore this ensures consistency of wire types between projects and users.

Wire colours and size marking


If you wish to have the wire size and colour displayed on the wire it is recommended that you set up different wire types in the option described above. These should be set up in the General wires section so that all new projects will have your predefined company standards.

As an example you may have a wire type called:

Wire Type (colour/size/number)	ANS	Wire No. Example
110VAC	%R%D%/%1.%5%M%M%/M	RD/1.5MM/32
PE	%G%N-%Y%E%/%2.%5%m%m/%P%E	GN-YE/2.5MM/PE

This detail would also be displayed in the report options within Electrical Designer such as the connectivity report CNX1. The extra detail could be filtered out for reporting if you wished by creating a special report in Crystal Reports. If you would like this report, please call our support team.

Each wire type has its own unique counter

You can create a new project and then select the command  Counters in the Project Browser. Insert a new counter, as an example, called “#Ca 110VAC” and set an end position of “99”. This will mean that the first wire number used within the project would be 100.

When creating a new project, create from this existing dummy project by highlighting the project first in the Projects Browser and then selecting New Project.