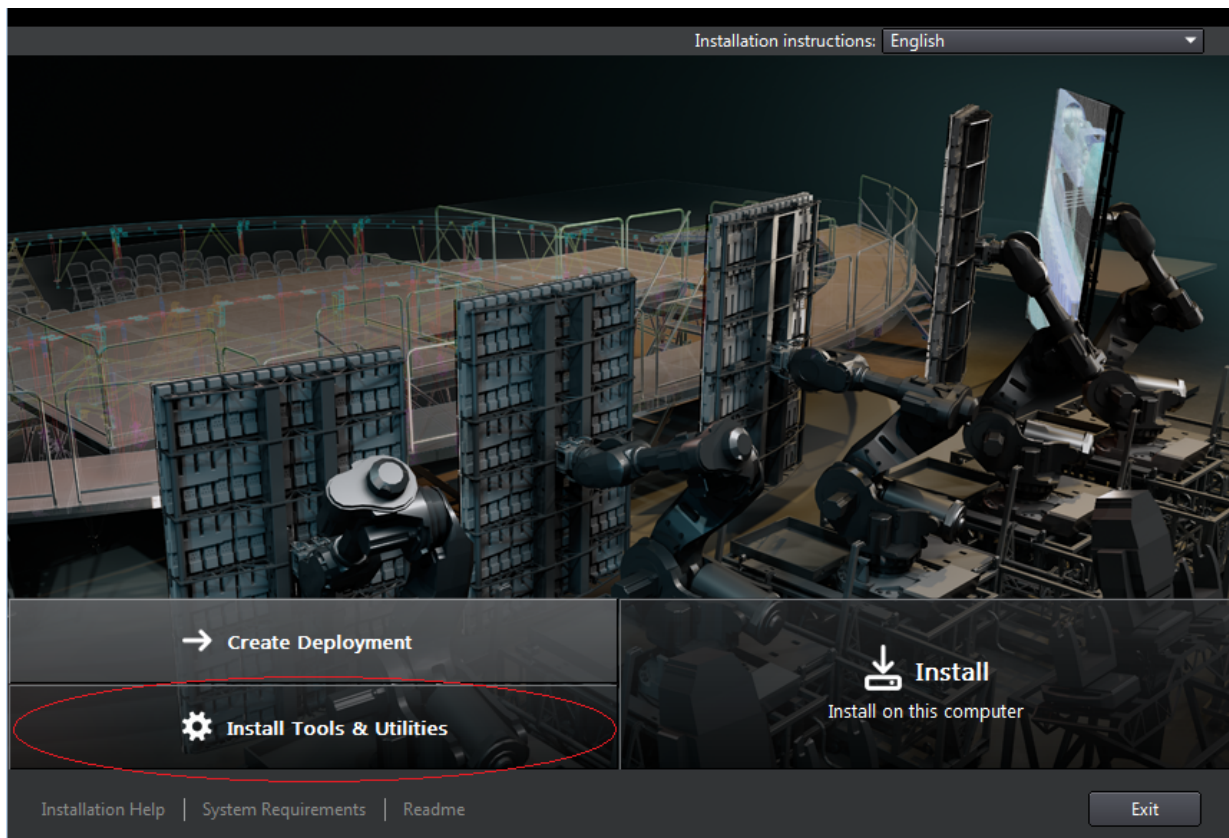


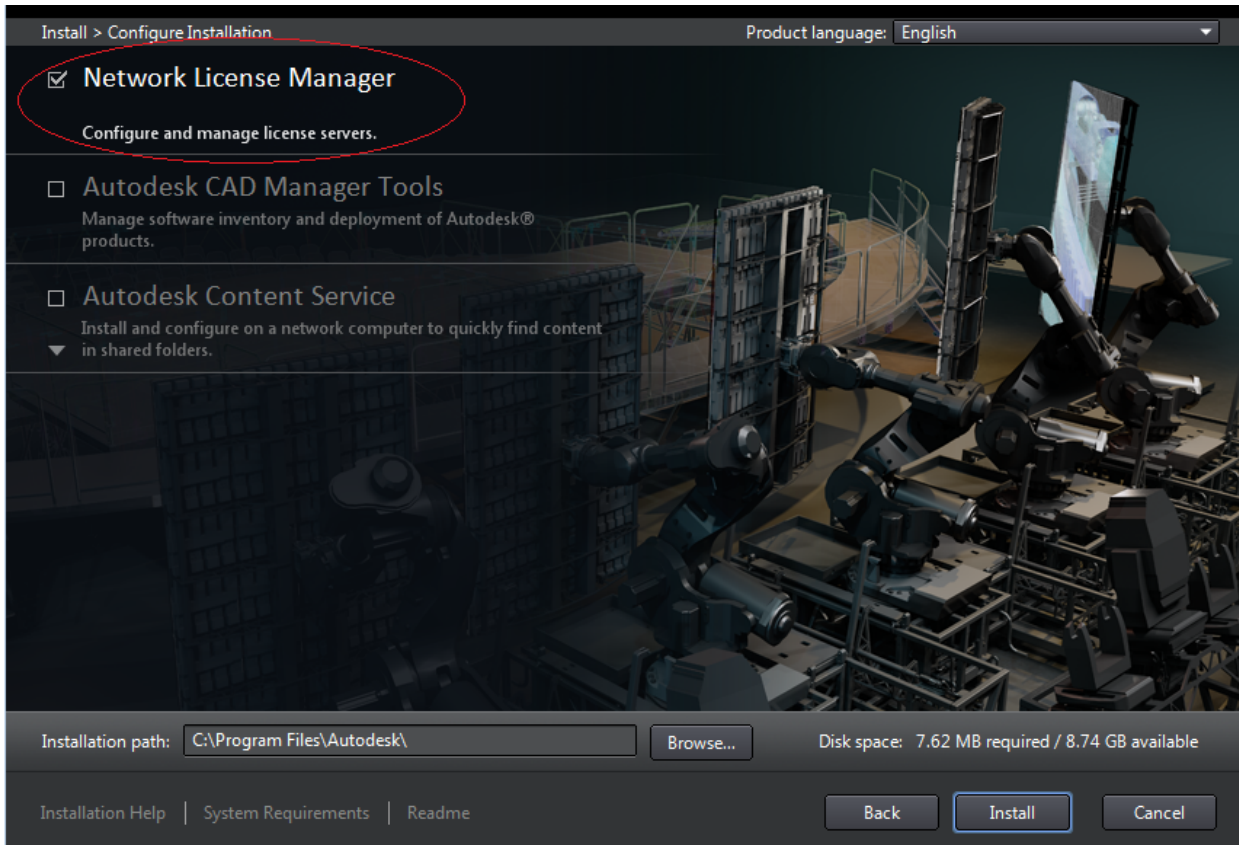
Installation of the Autodesk Network License Manager

All Autodesk Users

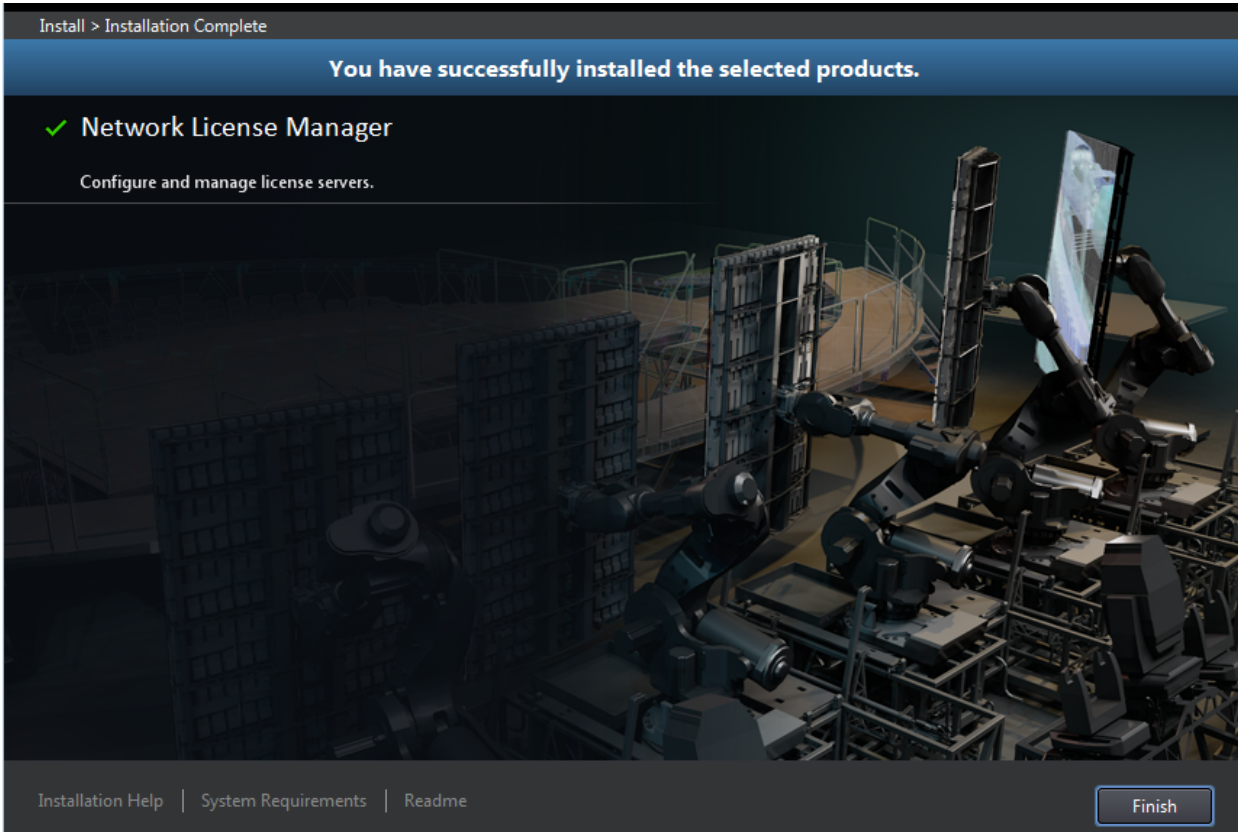
- From the Auto run screen of your product, select the option “Install Tools & Utilities”



- Select Network License Manager

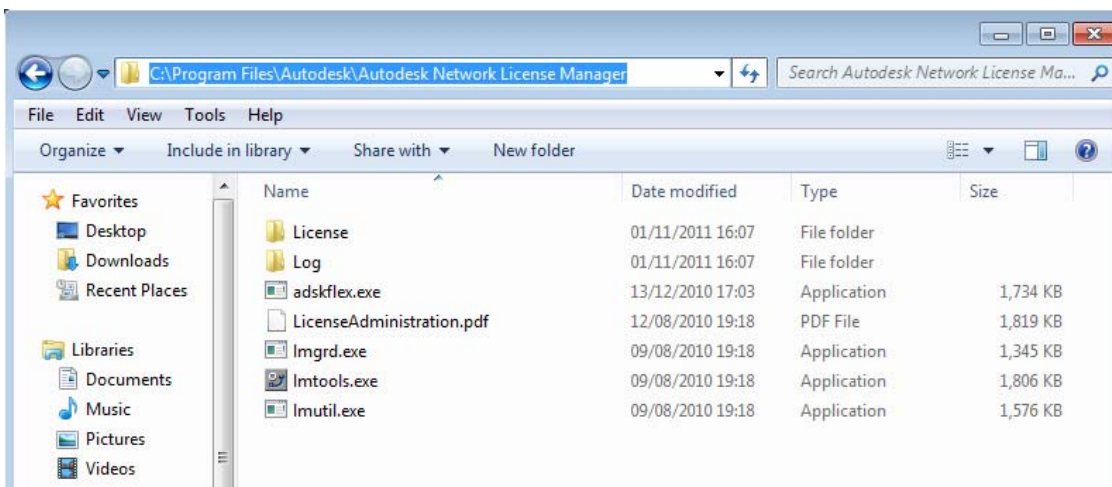


- Install to complete

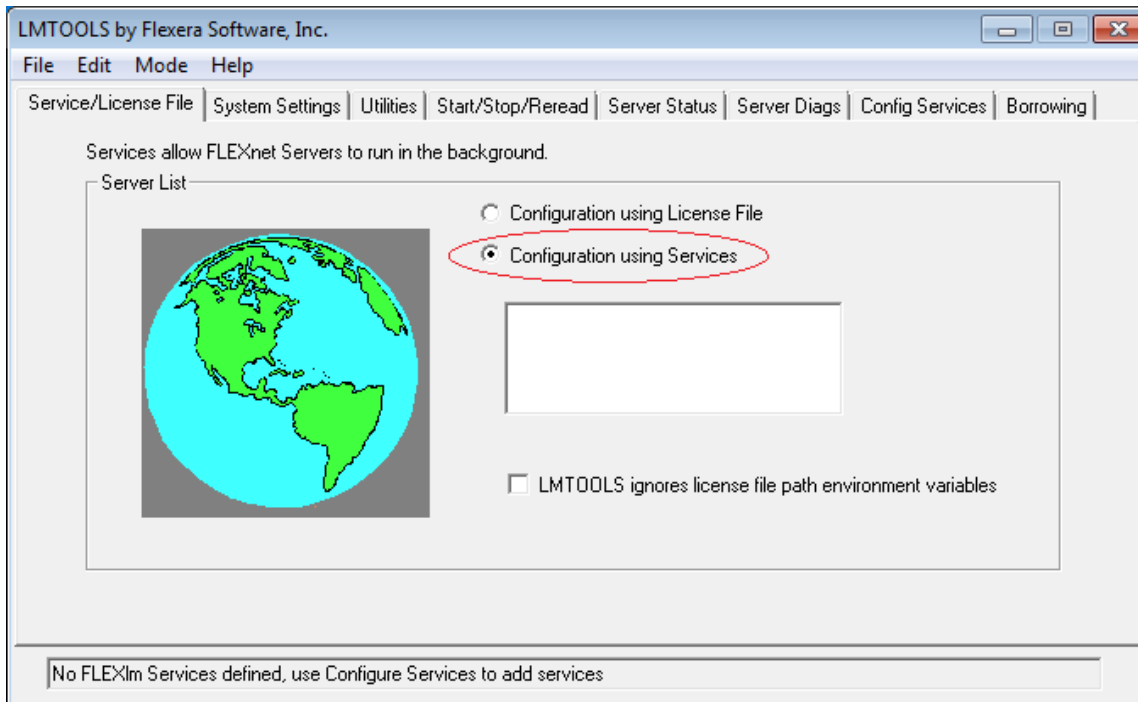


Configuring the Autodesk Licensing Service:

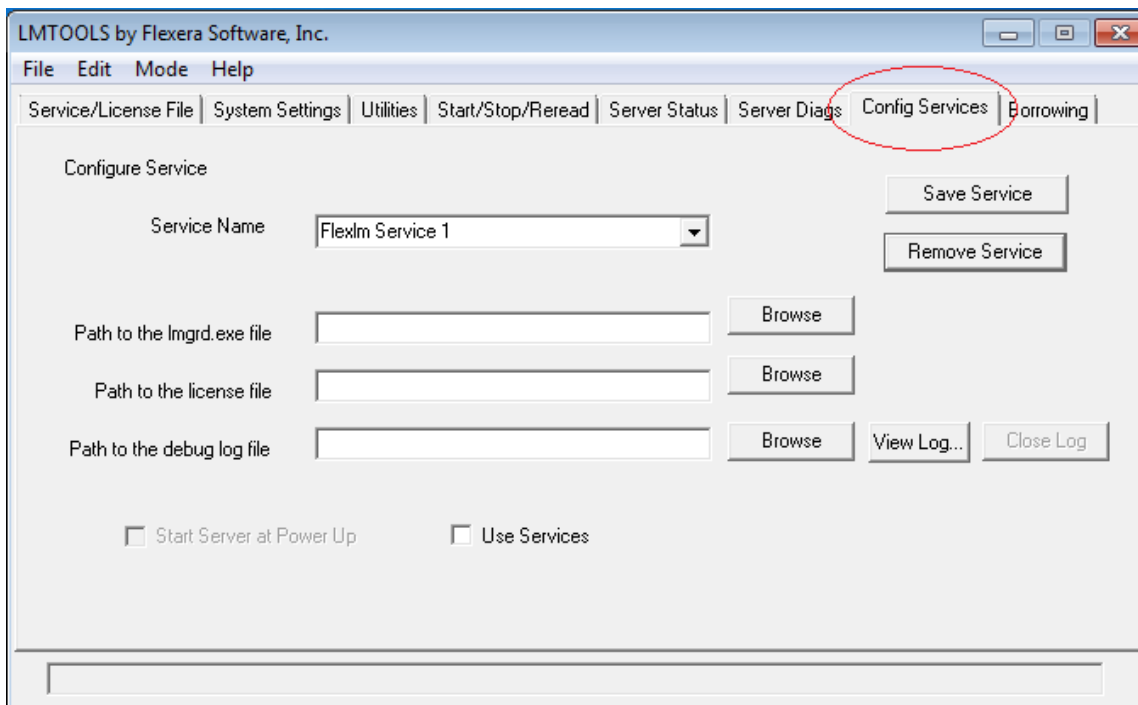
- Browse to the location of the Network License Manager folder and create two new folders named, License and Log



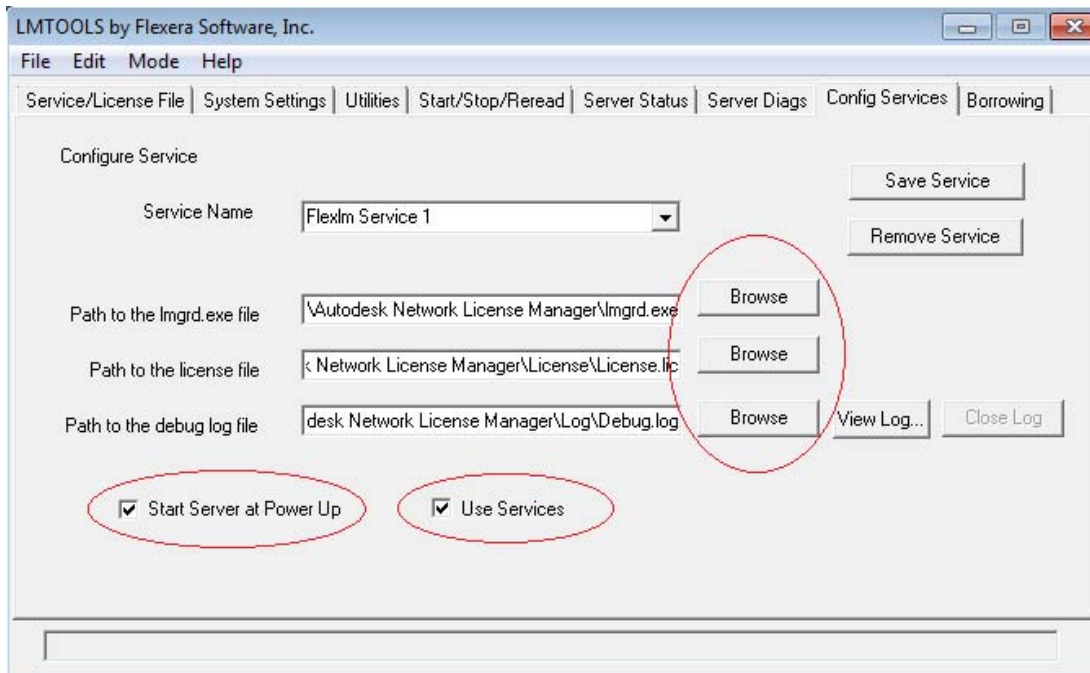
- Copy your license file in to the license folder
- Create a new text document in the log folder, named debug.log
- Open the LMTools utility. Choose the option Configuration using Services



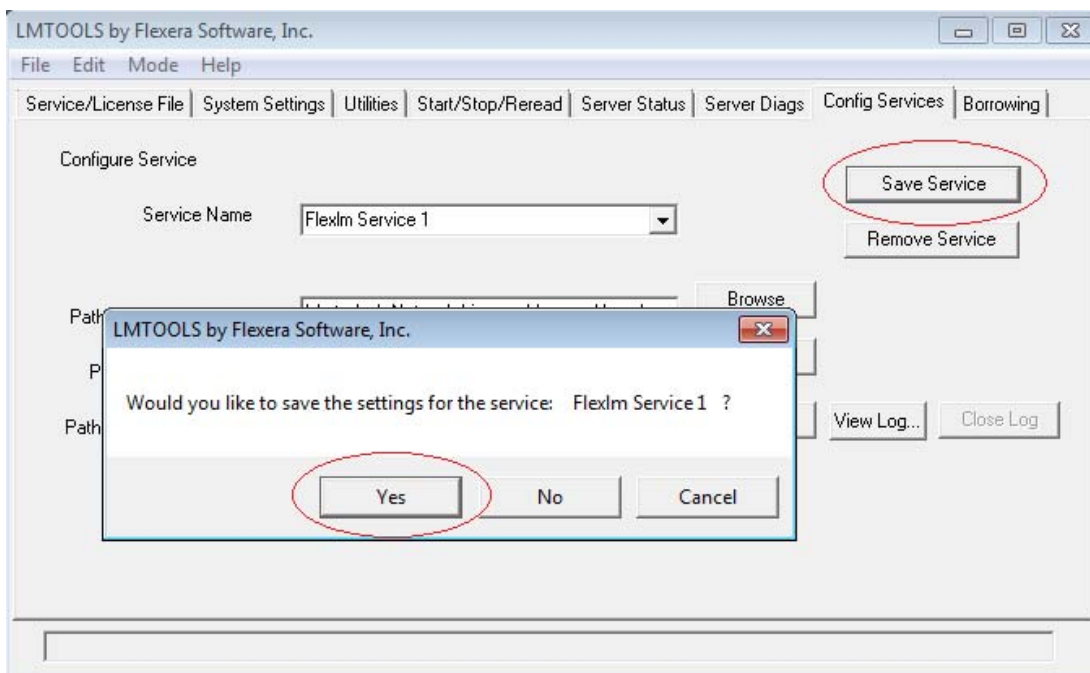
- Go to the Config Services tab



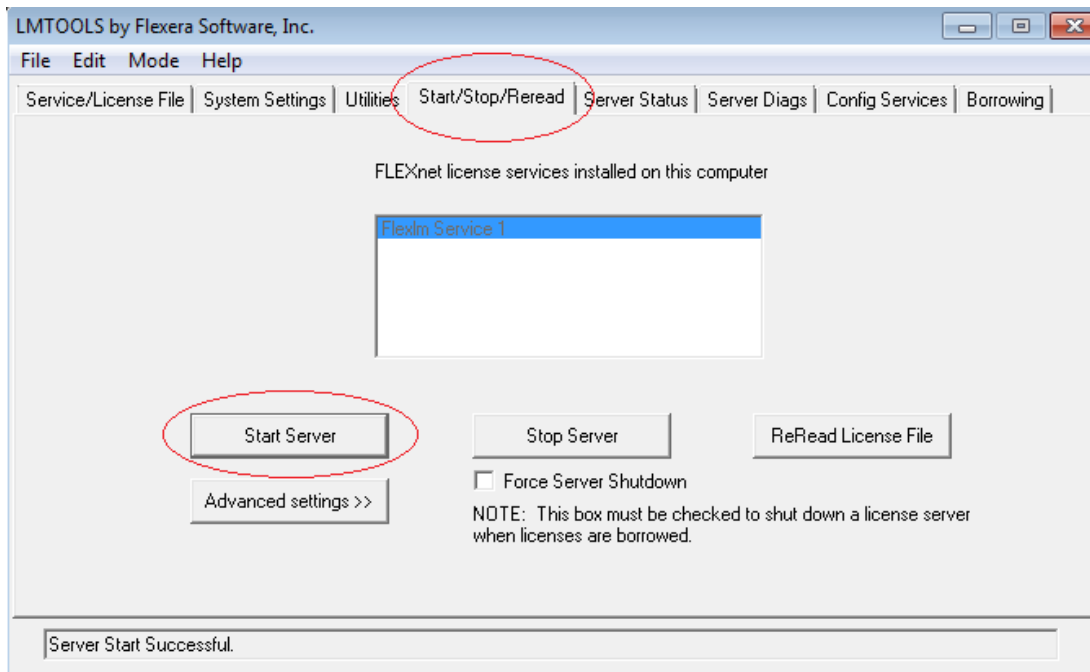
- Browse to the Imgrd.exe - located in C:\Program Files\Autodesk\Autodesk Network License Manager
- Browse to license file - located in the license folder
- Browse to the log file - located in the log folder
- Check Use Services and Start Server at Power Up



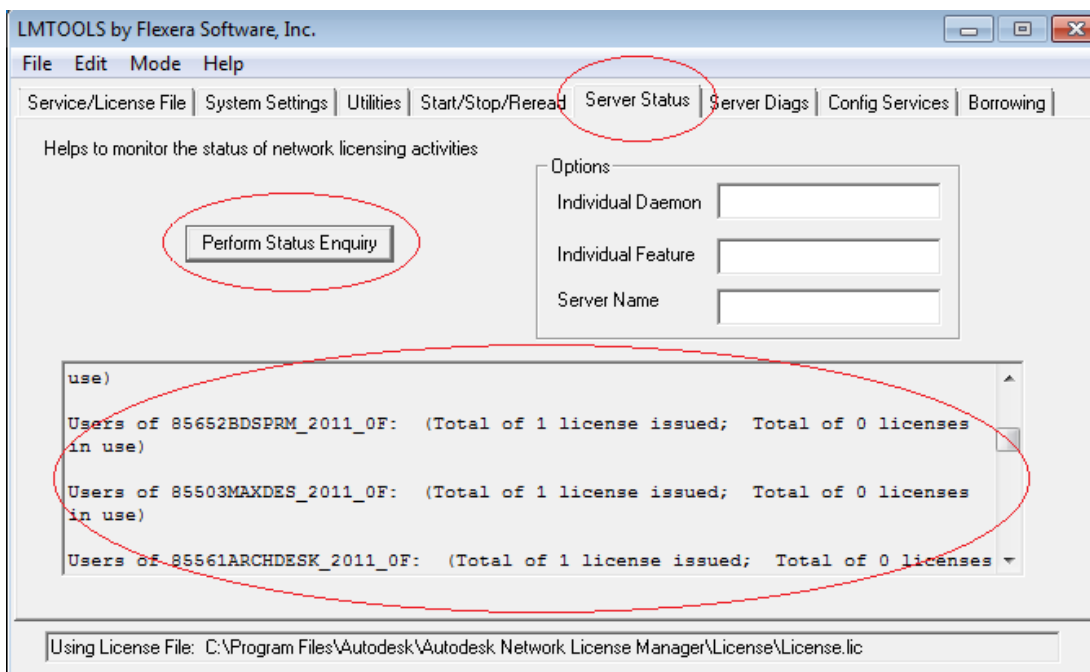
- Select Save Service and confirm



- Go to the Start/Stop/Reread tab and select Start Server



- Go to the Server Status tab and select Perform Status Enquiry



- Scroll down the text window to reveal the licensing information similar to the above.