

Copying & Modifying a Content Center Part Family

This is a quick guide detailing how to copy an existing Content Center part family and make changes. MS2011069

Advanced Inventor Users, Content Center Administrators

This walkthrough shows how to copy an existing Content Center family of parts and make changes to it. Content Center in Inventor 2012 contains over 1 million standard parts, but we often have customers requesting a specialized or brand-name family of parts. Copying a Content Center part family that is similar but requires some dimensional changes to exactly match your purchased parts is a very efficient way to use the Content Center tool. These screenshots show a PEM family of sheet metal fasteners copied and modified to become Hank Nuts (a recent customer request).

Note: By default, there is a library called **My Library** in both Desktop Content and ADMS (Vault server) installations. If you are working on a shared network, using ADMS server, you may need to have permission to edit the Content Center, speak to your Content Center administrator who will be able to set your permission to Content Center editor.

Instructions:

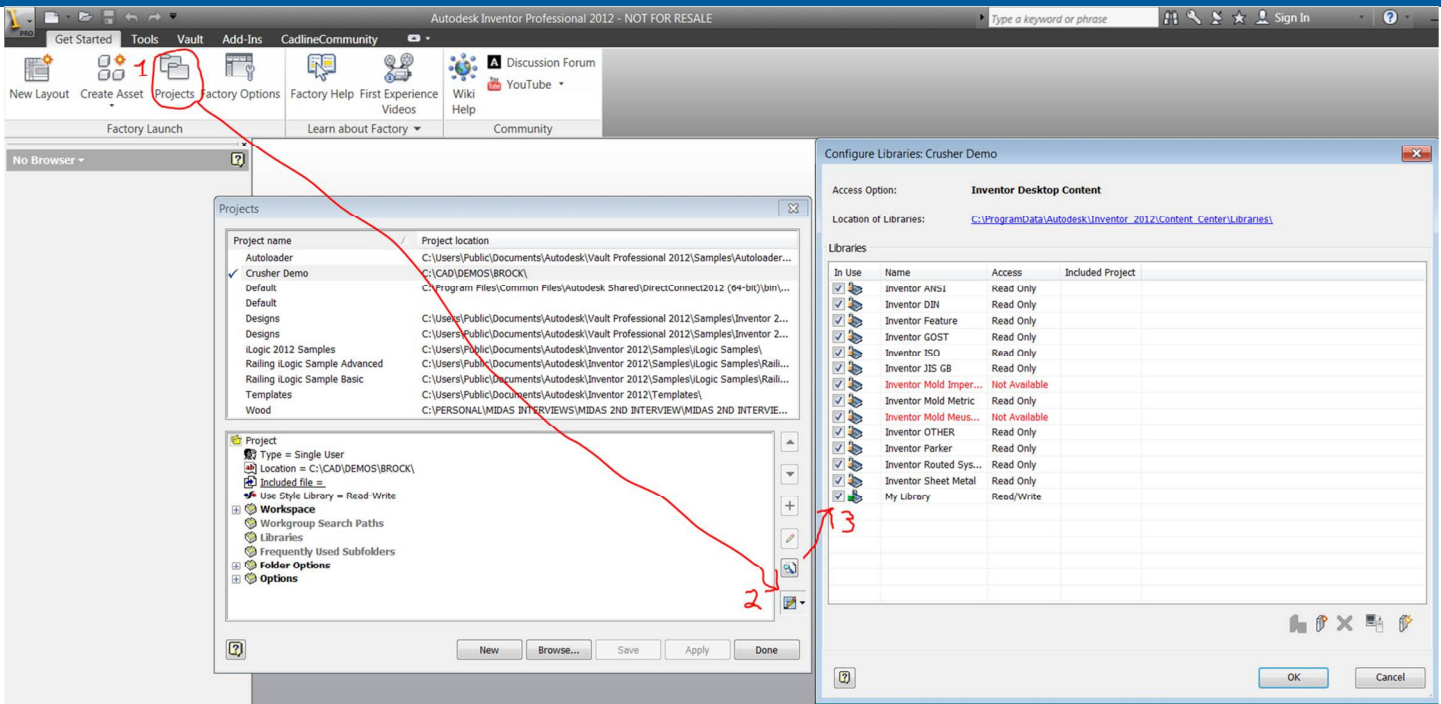
- 1) Close all part files and click on 'Projects'
- 2) Make sure the correct project file is selected and click 'Content Center Configuration' button.
- 3) Make sure **My Library** is ticked and is read/write.



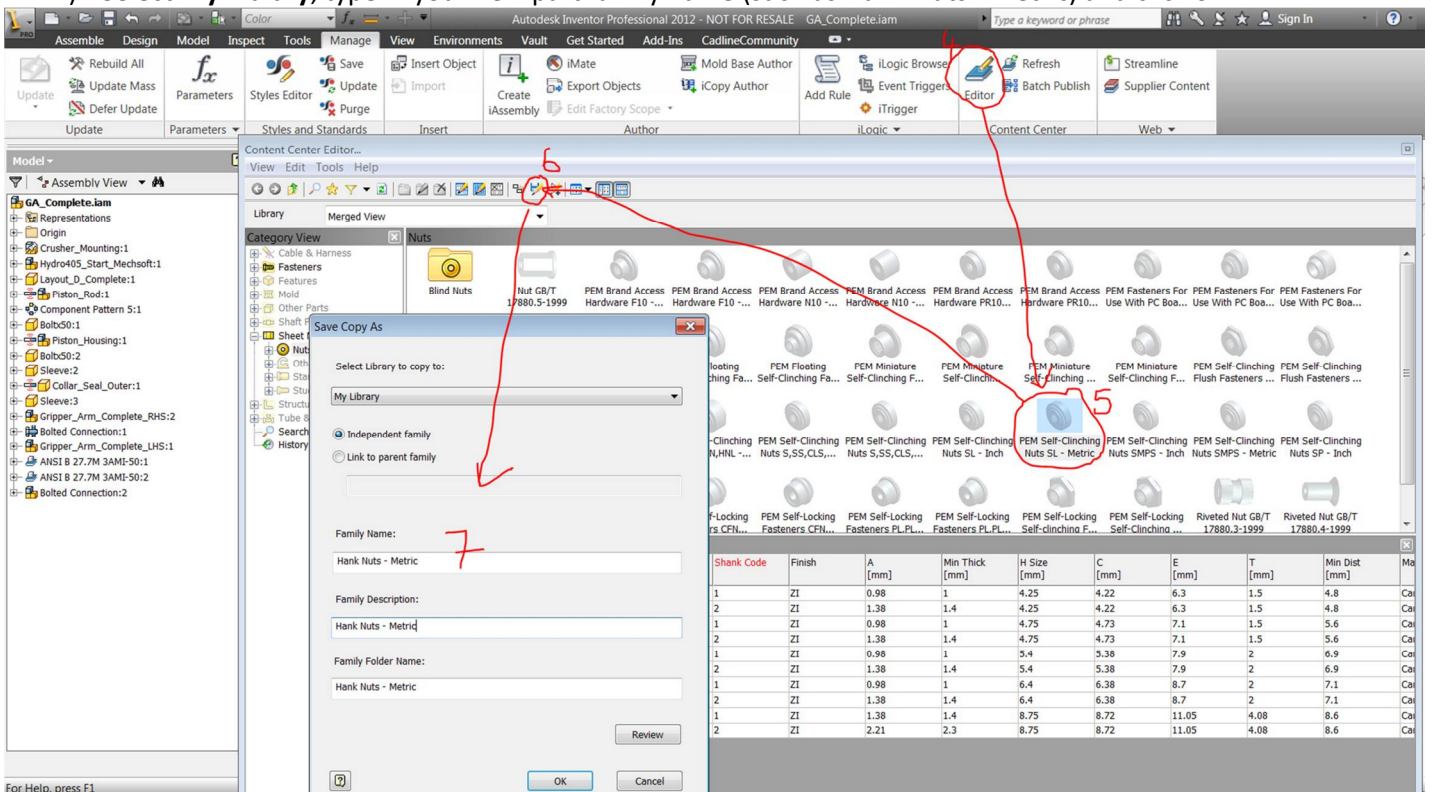
T: 01784 419922
E: sales@cadline.co.uk
W: www.cadline.co.uk
CADline Ltd, Northumberland House, Drake Avenue,
Staines, Middlesex, TW18 2AP



T: 01293 774442
E: sales@midastechnology.co.uk
W: www.midastechnology.co.uk
Midas Technology Ltd, Gatwick House,
Peaks Brook Lane, Horley, RH6 9ST



- 4) Click the Content Center editor (in tools tab).
- 5) Find the Content Center family that is the closest approximation to your purchased parts (In this case we are using PEM Self Clinching Nuts SL – Metric as similar to Hank Nuts) and click on it.
- 6) Click the 'save copy as' button
- 7) Select **My Library**, type in your new part family name (such as Hank Nuts - Metric) and click ok



- 8) Select **My Library**

E: sales@cadline.co.uk
W: www.cadline.co.uk

CADline Ltd, Northumberland House, Drake Avenue,
Staines, Middlesex, TW18 2AP

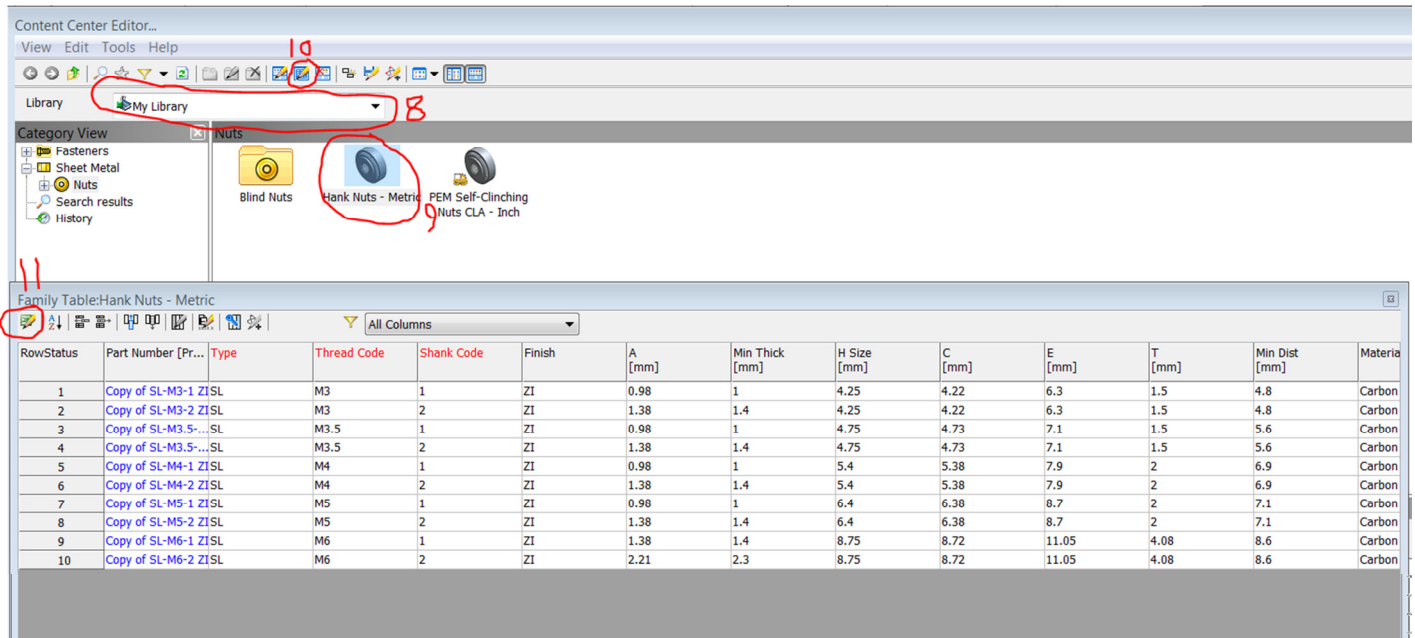


T: 01293 774442

E: sales@midastechnology.co.uk
W: www.midastechnology.co.uk

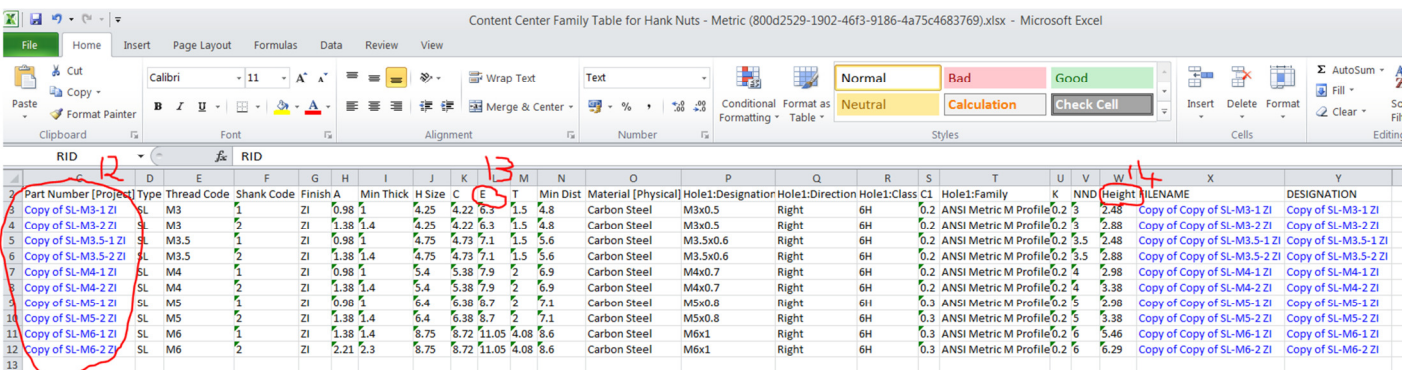
Midas Technology Ltd, Gatwick House,
Peeks Brook Lane, Horley, Surrey, RH6 9ST

- 9) Select your copied family
- 10) Select 'family table' icon
- 11) Select 'edit via spreadsheet' icon



Microsoft Excel will then open, and you can edit any parameters you wish. In this case we just want to change the following values based on the Hank Nut manufacturer's specifications, or our vernier measurements.

- 12) The part names
- 13) The diameter
- 14) The height



Then save the spreadsheet and return to Inventor. Check that you can now place your new parts into your assembly.

Note that to change the part family name you can right click on the family (in Content Centre Editor), click Family Properties and type in a new name such as 'Hank Nuts – Imperial'