

Find and Replace Attribute Information

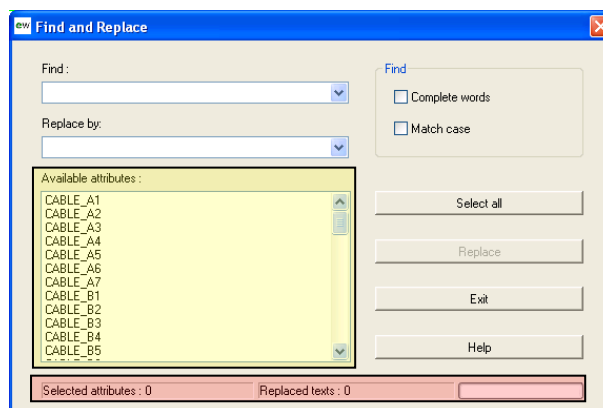
All Electrical Designer Users

The command searches for text inside attributes and replaces them with an alternative value. You can select single or multiple symbols to be included in your search.


Select  *Find and Replace*

- Select either an individual symbol by picking
- Select multiple symbols by using a crossing window or selection window
- Select all the symbols in the drawing by typing *ALL* at the Command line

The following dialogue will be shown which shows a list of the selected symbols available attributes:



From the list of *Available attributes* (**highlighted yellow**), you can use Shift and Ctrl keys to select individual or multiple attributes to be included in your search.

If you wish to search on all attributes, you can select 

Find:

This field should be filled out with the attribute text that you want to locate

Replace by:

This field should be filled out with the attribute text that you want to replace the original text

Complete words:

By checking this box only complete words that match the data filled in the *Find* field will be replaced

Match case:

By checking this box only words that match the case you have used in the *Find* field will be replaced

Replace:

This button will search the selected attributes for the text defined in the *Find* field and replace it with the text defined in the *Replace by* field

Exit:

This button will close the dialogue

At the bottom of the interface screen (**highlighted red**), you will be provided feedback about the number of attributes that you have selected and after carrying out the *Replace*, the number of attribute texts replaced.

The keyboard command is: FARATT