

# COBie Data Drops

Structure, uses & examples



	page
Introduction	1
Prior to drop 1	2
Drop 1	3
Drop 2	5
Drop 3	7
Drop 4	9
Drop 5	11
COBie file tab contents	12

Revision:	Date:	Amendment:
01	09.02.12	First draft
02	15.02.12	Section on Drop 5 added
03	16.03.12	Screen shots and example outputs updated
04	23.03.12	Confidentiality text added
05	27.03.12	Cell interior masked
06	29.03.12	Cell loaded drawings masked



### COBie - Data Drops for Standard MoJ Cell

The pages that follow show a conceptual representation of a Data Drop for a dummy configuration of two cells. After each conceptual representation of a Data Drop for a Standard MoJ Cell, a series of screenshots show what the actual COBie file looks like and how it evolves. There are also extracts from the COBie file for the standard cells to show the actual content of each tab a COBie file.

Data Drop 1:  
Model represents  
**REQUIREMENTS and CONSTRAINTS**

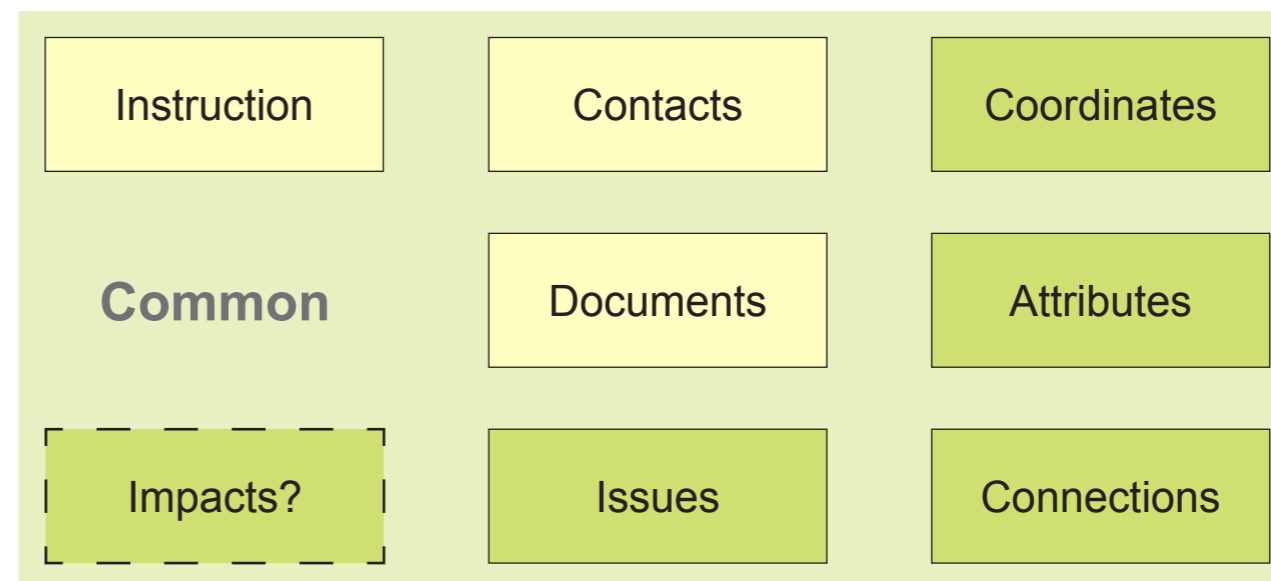
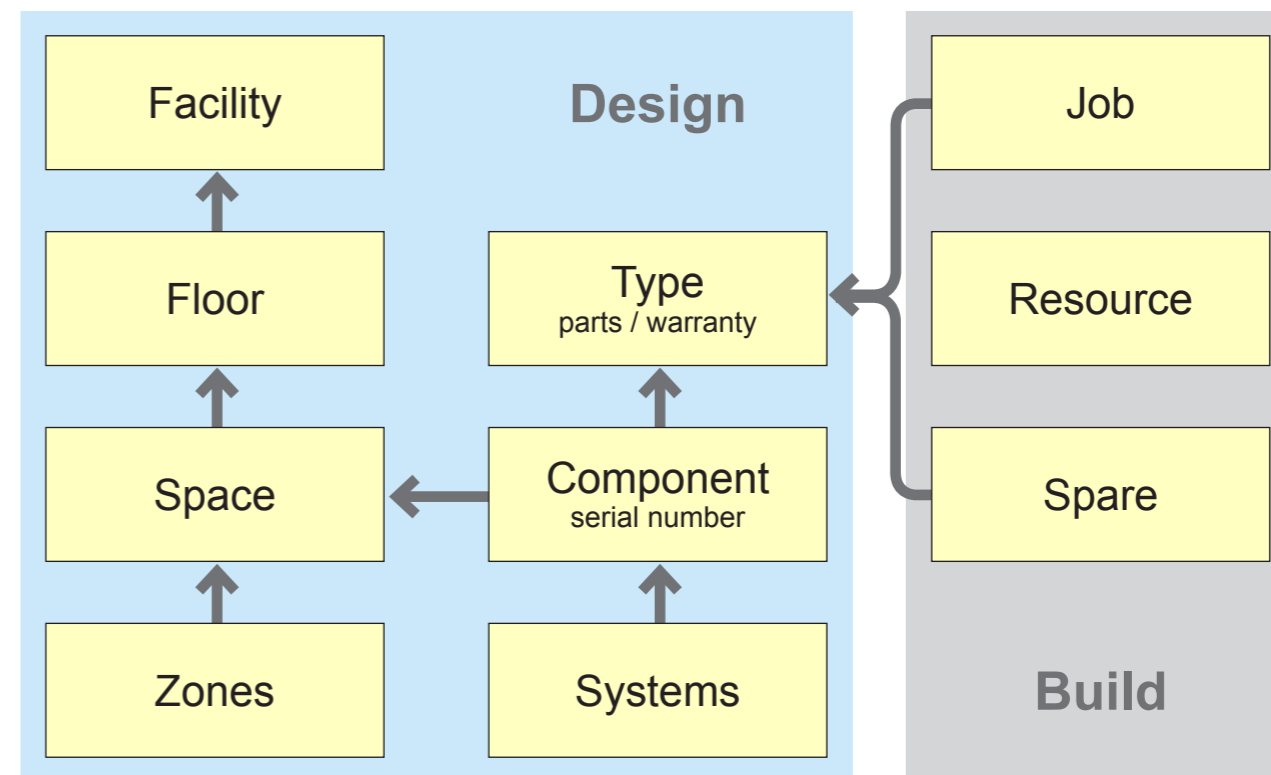
Data Drop 2:  
Model represents  
**OUTLINE SOLUTION**

Data Drop 3:  
Model represents  
**CONSTRUCTION INFORMATION**

Data Drop 4:  
Model represents  
**OPERATIONS and MAINTENANCE INFORMATION**

Data Drop 5 (and subsequent drops):  
Model represents  
**POST OCCUPANCY VALIDATION INFORMATION and ONGOING O&M**

Note:  
Visually, the representation of the data drops sometimes differ not that much. This is because in essence the visual aspect of the design representation does not change that much. It is the underlying information that changes and grows. Therefore, we have highlighted the fundamental differences between the data drops for a basic cell configuration.



The COBie tabs as progressively filled out throughout project

Instruction / Contact / Facility / Floor / Space / Zone / Type / Component / System / Assembly / Connection / Spare / Resource / Job / Impact / Document / Attribute / Coordinate / Issue / Picklists

The COBie tabs as they appear on a COBie worksheet in Excel

# Prior to Data Drop 1 Project Initiated

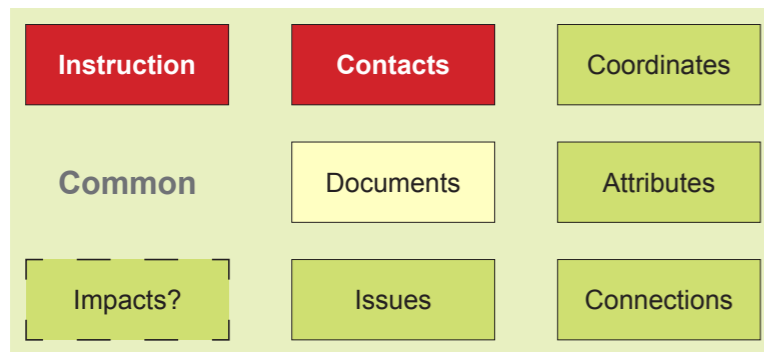
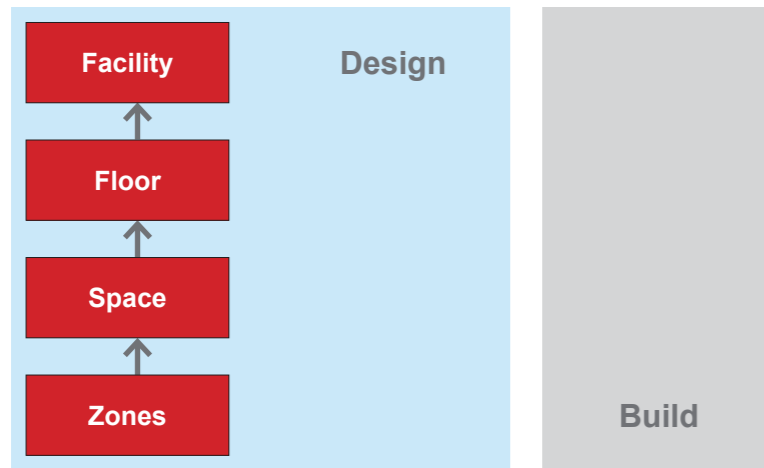
brydenwood

When project is initiated data is entered by hand. Tabs are colour coded according to BIM implementation strategy

Relevant contact data is entered by hand in the contact tab.

- Required
- Reference to other sheet or pick list
- External reference
- If specified as required
- Secondary information when preparing product data





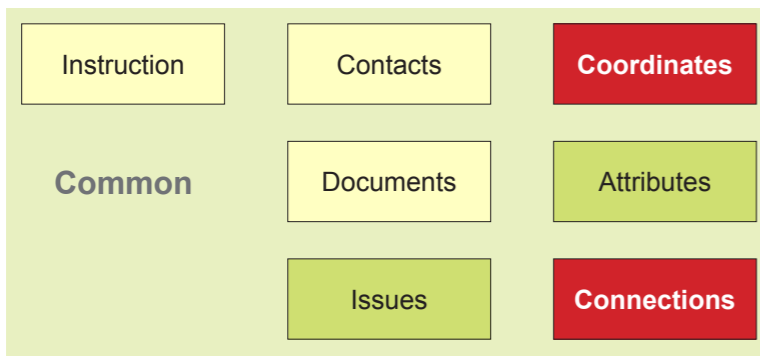
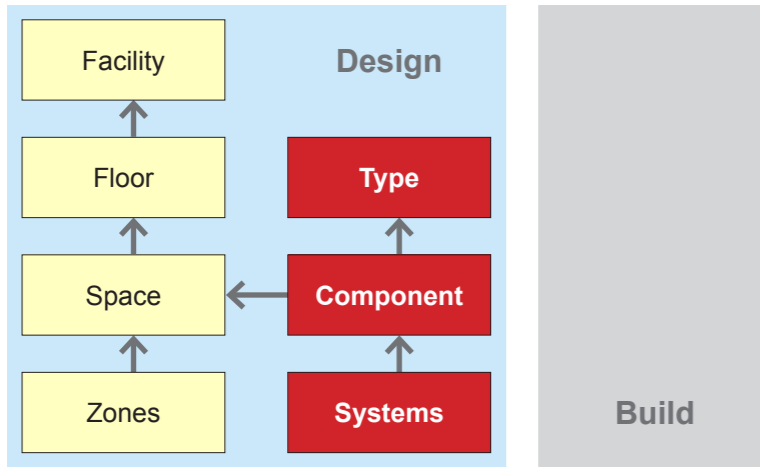
Data about facility entered manually. Not extracted from the model

Data regarding floors extracted from the model

Data regarding spaces extracted from the model

Data regarding zones extracted from the model





Data regarding types extracted from the model

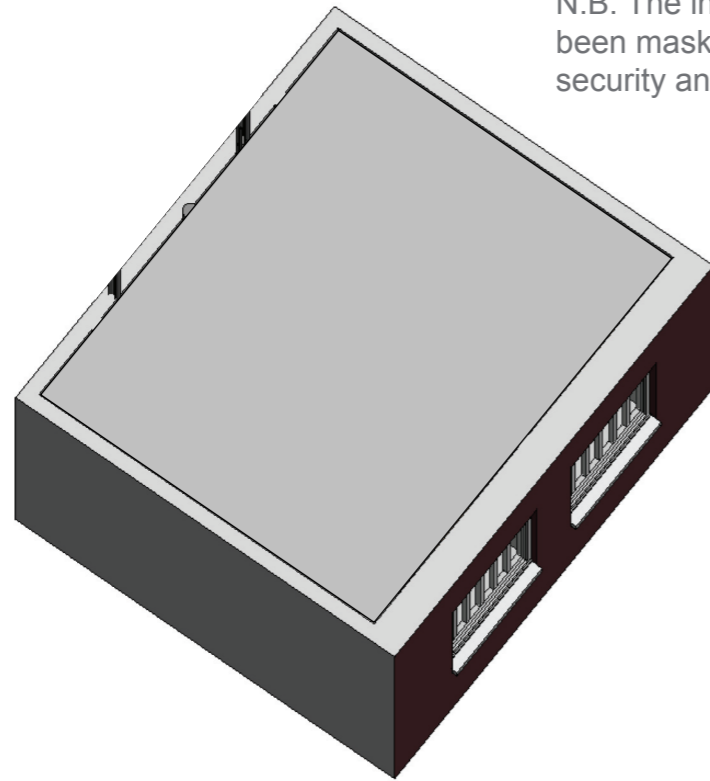
Data regarding types extracted from the model

Data regarding types extracted from the model

Data regarding connections extracted from the model (no data in current model)

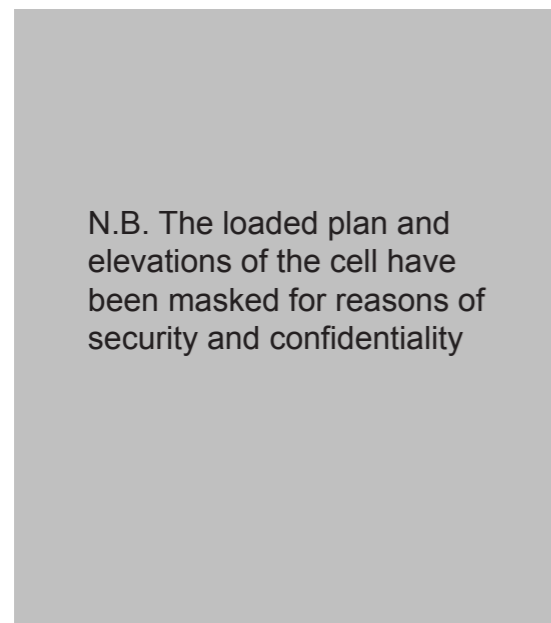
Data regarding coordinates extracted from the model

**Data Drop 3**  
 Model represents  
**CONSTRUCTION INFORMATION**



N.B. The interior of the cell has been masked for reasons of security and confidentiality

3D model - MEP and FF&E items show actual products, plant and equipment



N.B. The loaded plan and elevations of the cell have been masked for reasons of security and confidentiality

Loaded Drawings and RDS

RDS - agreed environmental conditions for construction

Item	Value	Unit	Notes
...	...	...	...

RDS - agreed finishes for construction

Item	Value	Unit	Notes
...	...	...	...

RDS - agreed furniture

Item	Value	Unit	Notes
...	...	...	...

The data available at drop 3 is broadly consistent with that expected at RIBA Stage F. The rationale for the data drop is to approve the 'Agreed Maximum Price'. The checks are to ensure the developed design and specifications are consistent with the client brief in terms of function, cost and carbon performance.

The model is a fully coordinated technical solution developed from solution in drop 2.

The model can be used for construction.

Fully coordinated technical drawings can be generated for construction.

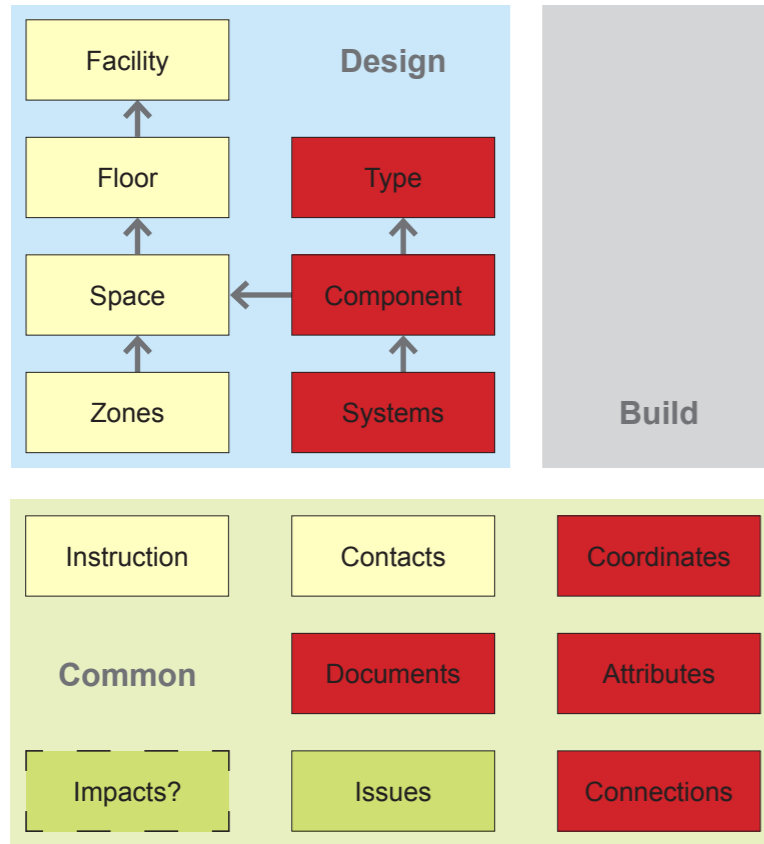
RDS can be generated for construction.

Various schedules (door, windows, furniture, etc.) can be produced for order.

The CIC Working Group indicates that the likely accuracy for information gathered at this stage is likely to be 85 - 90%.

**Difference with previous drop:**

The model now represents a technical solution that can be built. All input from the contractor is incorporated into the model.



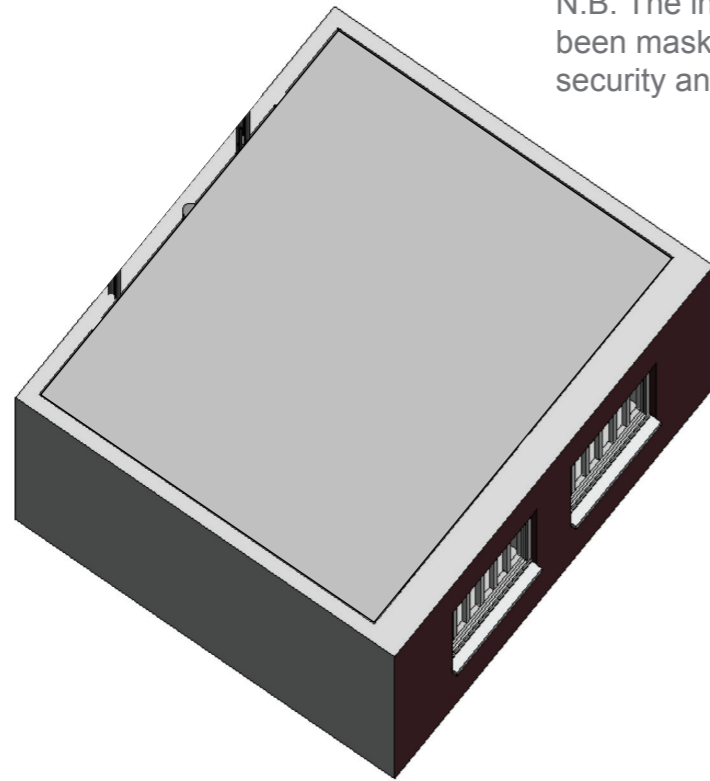
Name	Category	Quantity	Unit	Attributes
10101 - 210mm	10101 - Sidsburg	10101 - 210mm	m	...
10102 - 210mm	10102 - Sidsburg	10102 - 210mm	m	...
10103 - 210mm	10103 - Sidsburg	10103 - 210mm	m	...

Name	Category	Quantity	Unit	Attributes
700 - Function	...	...	...	...
701 - Area	...	...	...	...
702 - Height	...	...	...	...

Data for Type, Components, Systems, and Coordinates, Connections, and Documents Attributes get updated to construction level by extracting updated information from the model

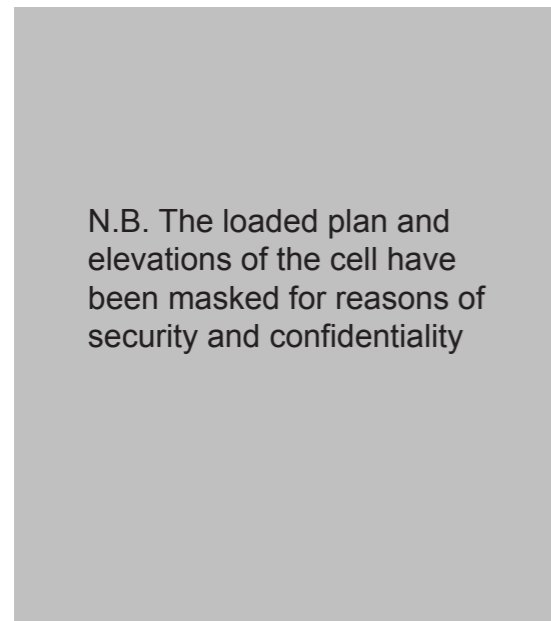
### Data Drop 4

Model represents OPERATIONS and MAINTENANCE INFORMATION



N.B. The interior of the cell has been masked for reasons of security and confidentiality

3D model - MEP and FF&E items show as-installed products, plant and equipment



N.B. The loaded plan and elevations of the cell have been masked for reasons of security and confidentiality

Loaded Drawings and RDS

RDS - environmental conditions for O&M

Item	Value	Unit
Temperature	20	°C
Humidity	50	%
Lighting	300	lx
Sound	55	dB

RDS - finishes for O&M

Item	Value	Unit
Wall	Plaster	m <sup>2</sup>
Floor	Concrete	m <sup>2</sup>
Ceiling	Gypsum	m <sup>2</sup>

RDS - furniture for O&M

Item	Value	Unit
Desk	10	m <sup>2</sup>
Chair	10	units
Storage	5	m <sup>2</sup>

The data available at drop 4 is broadly consistent with that expected at RIBA Stage K. The rationale for the data drop is to take position of the 'Operations and Management' Information.

The data being collected is the operational and detailed functional information supplied by the product manufacturers. Particular attention needs to be placed on the needs of the first year of operations as many 'as installed' processes may invalidate warranties if incorrectly applied in the first year of operation.

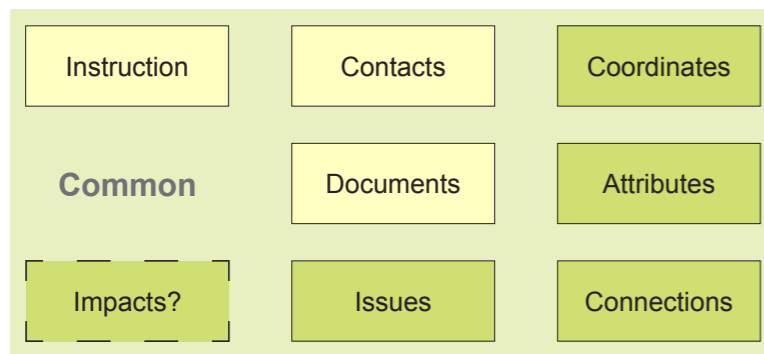
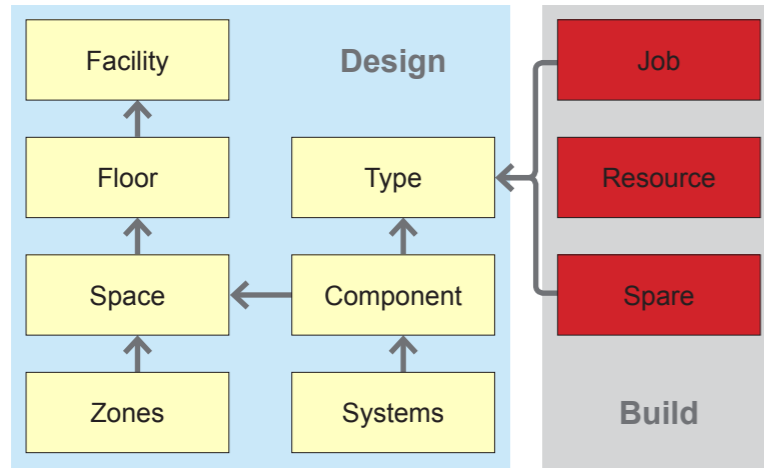
The model represent the building as built and contains all information provided by the various contractors to maintain it.

Information can be extracted from the model that is relevant for Facilities Management.

The likely accuracy for information gathered at this stage is to be 100%.

#### Difference with previous drop:

The model now represents the building as it is built. It also contains all information regarding systems and equipment as actually installed.



Data regarding Jobs, Resources and Spares for each 'Type' is keyed in manually by sub-contractors, to prepare COBie drop 4.

Definitions of Drop 5 have yet to be agreed but the concept of a post-occupancy information review to check how the asset is actually being used was seen as essential.

The COBie definitions are the same as drop 4 and this is seen as an opportunity to update the post occupancy systems with the final operational data set once systems and procedures have settled into operation. This is also seen as an opportunity to develop a useful data set regarding how the asset is actually used, but this will form part of a future activity.

**Difference with previous drop:**

The model now represents the building in use, and contains e.g. feedback information from the BMS system and estates management team.

Instruction

Title	COBie
Version	2
Release	4
Status	IFC2x3
Region	en-UK
Purpose	
Outline	

This column shows how many items (lines of data) there are in each of the tabs that follow

This column shows ratios of e.g. average number of tributes per object

From	Till	Count	Ratio	Key	
2012-01-19	2012-01-20	2265	2.57	Additional information per Object	This spreadsheet supports the exchange of building, system and product information through the life of the project. Individual worksheets are organized by project phase as shown below

Sheet	From	Till	Count	Ratio	Key	Contents
Contact	2012-01-20	2012-01-20	3	0.00	Contacts per Object	People and Companies

Sheet	From	Till	Count	Ratio	Key	Contents
Facility	2012-01-19	2012-01-19	1			
Floor	2012-01-19	2012-01-19	1	1.00	Floors per Facility	Vertical levels and exterior areas
Space	2012-01-19	2012-01-20	3	3.00	Spaces per Floor	Spaces
Zone	2012-01-20	2012-01-20	1	3.00	Spaces per Zone	Sets of spaces sharing a specific attribute
Type	2012-01-19	2012-02-28	3	108.67	Components per Type	Types of equipment, products, and materials

Sheet	From	Till	Count	Ratio	Key	Contents
Component	2012-01-19	2012-02-28	326	108.67	Components per Space	Individually named or schedule items
System	2012-01-19	2012-02-28	300	1.09	Components per System	Sets of components providing a service
Assembly	2012-01-19	2012-01-19	6	0.01	Assemblies per Object	Constituents for Types, Components and others
Connection			0	0.00	Connections per Object	Logical connections between components
Impact	2012-01-20		26	0.04	Impacts per Object	Economic, Environmental and Social Impacts at various stages in the life cycle

Sheet	From	Till	Count	Ratio	Key	Contents
						Note: submittals and approvals added on Documents Note: manufacturer and model added on Type Note: serial and tag added on Component

Sheet	From	Till	Count	Ratio	Key	Contents
Spare	2012-01-19	2012-01-20	12	4.00	Spares per Type	Onsite and replacement parts
Resource			0	0.00	Resources per Type	Required materials, tools, and training
Job	2012-01-19	2012-01-20	12	4.00	Jobs per Type	PM, Safety, and other job plans
						Note: warranty information added on Type

Sheet	From	Till	Count	Ratio	Key	Contents
Document	2012-01-19	2012-01-19	7	0.01	Documents per Object	All applicable document references
Attribute	2012-01-19	2012-01-19	1480	2.33	Attributes per Object	Properties of referenced item
Coordinate	2012-01-19	2012-01-19	87	0.14	Coordinates per Object	Spatial locations in box, line, or point format
Issue			0	0.00	Issues per Object	Other issues remaining at handover.

Contact

Email	CreatedBy	CreatedOn	Category	Company	Phone	Department	OrganizationCode	GivenName	FamilyName	Street	PostalBox	Town	StateRegion	PostalCode	Country
<a href="mailto:ejesus@brydenwood.co.uk">ejesus@brydenwood.co.uk</a>	ejesus@brydenwood.co.uk	2012-01-20T09:46:33	C66 : Production information	Bryden Wood Ltd	2072534772	design	BW	design	team	99 Charterhoun/a		London	London	EC1M 6HR	UK
<a href="mailto:nn@aec3.com">nn@aec3.com</a>	ejesus@brydenwood.co.uk	2012-01-20T09:46:33	C12 : Quality management	AEC3	01494 714933	qa	AEC3	Nick	Nisbet	46 St Margare n/a		High Wycombe	Buckingha	HP15 6HP	UK
<a href="mailto:sales@wallgate.co.uk">sales@wallgate.co.uk</a>	ejesus@brydenwood.co.uk	2012-01-20T09:46:33	Supplier	Wallgate Ltd	01722 744 594	sales	Wallgate	sales	team	Crow Lane	n/a	Salisbury	Wiltshire	SP2 0HB	UK



Facility

Name	CreatedBy	CreatedOn	Category	ProjectName	SiteName	LinearUnits	AreaUnits	VolumeUnits	CurrencyUnit	AreaMeasurement	Description	ProjectDescription	SiteDescription	Phase
StandardCell	ejesus@brydenwood	2012-01-19T12:27:24	D376 : Detention secure facilities prisons	StandardCell	StandardCell	millimeters	squaremeters	cubicmeters	Pounds	Indicative	Standard Cell	StandardCell	Crook Wood, Kent	RIBA 2010 K : Construction to Practical Completion

Floor

Name	CreatedBy	CreatedOn	Category	ExtObject	ExtIdentifier	Description	Elevation	Height
Level 0	ejesus@brydenwood.co.uk	2012-01-19T12:27:24	Floor	IfcBuildingStorey	1TB8MXxf6BAI7EOCcoVPF	Level 0	0	2700

Space

Name	CreatedBy	CreatedOn	Category	FloorName	Description	ExtObject	ExtIdentifier	RoomTag	UsableHeight	GrossArea	NetArea
L0-01A	ejesus@brydenwood	2012-01-19T12:27:24	F D376 : Detention secure facilities prisons	Level 0	Cell 1	IfcSpace	3cBcy7GEjBwPmXo\$	Cell 001	2500	7.615	7.615
L0-02B	ejesus@brydenwood	2012-01-19T12:27:24	F D376 : Detention secure facilities prisons	Level 0	Cell 2	IfcSpace	3cBcy7GEjBwPmXo\$	Cell 002	2500	7.615	7.615
L0-C01	nn@aec3.com	2012-01-20T10:01:14	F327 : Corridors	Level 0	Corridor 01	IfcSpace		Corr 001	2700	3.000	3.000

Zone

Name	CreatedBy	CreatedOn	Category	SpaceNames	ExtSystem	ExtObject	ExtIdentifier	Description
Secure	ejesus@br	2012-01-20T10:13:26	Circulation Zone	L0-01A, L0-02B,L0-C01				Secure zone for cells corridors and communal areas

Type

brydenwood

Name	CreateBy	CreateOn	Category	Description	AssetType	Manufacturer	ModelNumber	WarrantyGuaranteeParts	WarrantyDurationParts	WarrantyGuaranteeLabor	WarrantyDurationLabor	WarrantyDurationUnit	ExtIdentifier	ReplacementCost	ExpectedLife	DurationUnit	WarrantyDescription	NominalLength	NominalWidth	NominalHeight	ModelReference	Shape	Size	Color	Finish	Grade	Material	Constituents	Features	AccessibilityPerformance	CorePerformance	SustainabilityPerformance	
1810 x 2110mm	ejesus@brydenwood.c	2012-01-19T12:27:24	L41101 : Side hung	1810 x 2110mm	Fixed	n/a	n/a	n/a	n/a	n/a	n/a	year	1CDIQ4E3	n/a	n/a	year	n/a	1810.0	150.0	2110.0	Generic Int DD:1810 x 2110mm	n/a	n/a	n/a	n/a	n/a	Generic Glass	n/a	n/a	n/a	n/a		
790 x 2110mm 3	ejesus@brydenwood.c	2012-01-19T12:27:24	L41101 : Side hung	790 x 2110mm 3	Fixed	n/a	n/a	n/a	n/a	n/a	n/a	year	1USECSY8M	n/a	n/a	year	n/a	790.0	150.0	2110.0	Generic Int D Cell Door:790 x 2110mm	n/a	n/a	n/a	n/a	n/a	Generic Inserts	n/a	n/a	n/a	n/a		
Cell Bed family	ejesus@brydenwood.c	2012-01-19T12:27:24	L8231 : Beds	Cell Bed family	Fixed	n/a	n/a	n/a	n/a	n/a	n/a	year	0uCr33MT	n/a	n/a	year	n/a	2000.0	700.0	400.0	n/a	n/a	n/a	n/a	n/a	n/a	n/a	n/a	n/a	n/a	n/a		
Desk Whitewood	ejesus@brydenwood.c	2012-01-19T12:27:24	L8531 : Desks	Desk Whitewood	Fixed	n/a	n/a	n/a	n/a	n/a	n/a	year	0uCr33MT	n/a	n/a	year	n/a	1360.0	450.0	900.0	n/a	n/a	n/a	n/a	n/a	n/a	Whitewood	n/a	n/a	n/a	n/a		
Cell Locker	ejesus@brydenwood.c	2012-01-19T12:27:24	L8234 : Bedside units	Cell Locker	Fixed	n/a	n/a	n/a	n/a	n/a	n/a	year	0uCr33MT	n/a	n/a	year	n/a	500.0	450.0	1000.0	n/a	n/a	n/a	n/a	n/a	Whitewood	n/a	n/a	n/a	n/a			
Safer Seat	ejesus@brydenwood.c	2012-01-19T12:27:24	L8222 : Chairs	Safer Seat	Moveable	n/a	n/a	n/a	n/a	n/a	n/a	year	0uCr33MT	n/a	n/a	year	n/a	500.0	500.0	500.0	n/a	n/a	n/a	n/a	n/a	n/a	n/a	n/a	n/a	n/a	n/a		
1275x1200H	ejesus@brydenwood.c	2012-01-19T12:27:24	L413 : Windows	1275x1200H	Fixed	n/a	n/a	n/a	n/a	n/a	n/a	year	1ZA_U66n	n/a	n/a	year	n/a	1275.0	340.0	1200.0	Generic Int 7 Bay FF:1275x1200H	n/a	n/a	n/a	n/a	n/a	Generic Inserts	n/a	n/a	n/a	n/a		
Basic Wall-Generic Ext - 150mm	ejesus@brydenwood.c	2012-01-19T12:27:24	L384 : Partitions non-structural internal walls	Basic Wall-Generic Ext - 150mm	Fixed	n/a	n/a	n/a	n/a	n/a	n/a	year	n/a	n/a	n/a	year	n/a	1000.0	150.0	2700.0	n/a	n/a	n/a	n/a	n/a	n/a	n/a	n/a	n/a	n/a	n/a		
Basic Wall-Generic Ext - 340mm 2	ejesus@brydenwood.c	2012-01-19T12:27:24	L384 : Partitions non-structural internal walls	Basic Wall-Generic Ext - 340mm 2	Fixed	n/a	n/a	n/a	n/a	n/a	n/a	year	n/a	n/a	n/a	year	n/a	1000.0	340.0	2700.0	n/a	n/a	n/a	n/a	n/a	n/a	n/a	n/a	n/a	n/a	n/a		
Basic Wall-Generic Ext - 80mm	ejesus@brydenwood.c	2012-01-19T12:27:24	L384 : Partitions non-structural internal walls	Basic Wall-Generic Ext - 80mm	Fixed	n/a	n/a	n/a	n/a	n/a	n/a	year	n/a	n/a	n/a	year	n/a	1000.0	80.0	2675.0	n/a	n/a	n/a	n/a	n/a	n/a	n/a	n/a	n/a	n/a	n/a	n/a	
Concrete (Painted)	ejesus@brydenwood.c	2012-01-19T12:27:24	L3221 : Dense concrete blocks	Concrete (Painted)	Fixed	n/a	n/a	n/a	n/a	n/a	n/a	year	n/a	n/a	n/a	year	n/a	1000.0	1000.0	1000.0	n/a	n/a	n/a	n/a	n/a	n/a	n/a	n/a	n/a	n/a	n/a	n/a	
Generic	ejesus@brydenwood.c	2012-01-19T12:27:24	L7841 : Thermal insulation and linings	Generic	Fixed	n/a	n/a	n/a	n/a	n/a	n/a	year	n/a	n/a	n/a	year	n/a	1000.0	1000.0	1000.0	n/a	n/a	n/a	n/a	n/a	n/a	n/a	n/a	n/a	n/a	n/a	n/a	
Generic Inserts	ejesus@brydenwood.c	2012-01-19T12:27:24	L7841 : Thermal insulation and linings	Generic Inserts	Fixed	n/a	n/a	n/a	n/a	n/a	n/a	year	n/a	n/a	n/a	year	n/a	1000.0	1000.0	1000.0	n/a	n/a	n/a	n/a	n/a	n/a	n/a	n/a	n/a	n/a	n/a	n/a	
Material Brickwork	ejesus@brydenwood.c	2012-01-19T12:27:24	L321 : Bricks	Material Brickwork	Fixed	n/a	n/a	n/a	n/a	n/a	n/a	year	n/a	n/a	n/a	year	n/a	1000.0	1000.0	1000.0	n/a	n/a	n/a	n/a	n/a	n/a	n/a	n/a	n/a	n/a	n/a	n/a	
TFT Monitor	ejesus@brydenwood.c	2012-01-20T10:01:14	L7613 : Audio-visual information	TFT Monitor	Moveable	n/a	n/a	n/a	n/a	n/a	n/a	year	n/a	n/a	n/a	year	n/a	400.0	1000.0	400.0	n/a	n/a	n/a	n/a	n/a	n/a	n/a	n/a	n/a	n/a	n/a	n/a	
Mirror	ejesus@brydenwood.c	2012-01-20T10:01:14	L8723 : Mirrors	Mirror	Moveable	n/a	n/a	n/a	n/a	n/a	n/a	year	n/a	n/a	n/a	year	n/a	290.0	75.0	390.0	n/a	n/a	n/a	n/a	n/a	n/a	n/a	n/a	n/a	n/a	n/a	n/a	
Plumbing SVP 1	ejesus@brydenwood.c	2012-01-20T10:01:14	L7313 : Sanitary above ground pipes and fittings	Plumbing SVP 1	Fixed	n/a	n/a	n/a	n/a	n/a	n/a	year	n/a	n/a	n/a	year	n/a	150.0	150.0	1000.0	n/a	n/a	n/a	n/a	n/a	n/a	n/a	n/a	n/a	n/a	n/a	n/a	
WC Pan 510 x 510mm	ejesus@brydenwood.c	2012-01-20T10:01:14	L72113 : Pans seats	WC Pan 510 x 510mm	Fixed	n/a	n/a	n/a	n/a	n/a	n/a	year	n/a	n/a	n/a	year	n/a	510.0	510.0	400.0	n/a	n/a	n/a	n/a	n/a	n/a	n/a	n/a	n/a	n/a	n/a	n/a	
Wallgate ALS80 Basin 470w x 300d	ejesus@brydenwood.c	2012-01-20T10:01:14	L72104 : Washbasins	Wallgate ALS80 Basin 470w x 300d	Fixed	sales@wallgate.co.uk	ALS80	n/a	n/a	n/a	n/a	year	n/a	n/a	n/a	year	n/a	470.0	300.0	900.0	ALS80	n/a	n/a	n/a	n/a	n/a	n/a	n/a	n/a	n/a	n/a	n/a	n/a
3 Way Valve - 20-100 mm: 15 mm	ejesus@brydenwood.c	2012-02-28T16:44:51	L73121 : Pipes and fittings	3 Way Valve - 20-100 mm: 15 mm	n/a	n/a	n/a	n/a	n/a	n/a	n/a	n/a	778621	n/a	n/a	n/a	n/a	n/a	n/a	n/a	n/a	n/a	n/a	n/a	n/a	n/a	n/a	n/a	n/a	n/a	n/a	n/a	
Balancing Damper - Rectangular: Standard	ejesus@brydenwood.c	2012-02-28T16:44:51	L75612 : Fire dampers for air ductlines	Balancing Damper - Rectangular: Standard	n/a	n/a	n/a	n/a	n/a	n/a	n/a	n/a	756578	n/a	n/a	n/a	n/a	n/a	n/a	n/a	n/a	n/a	n/a	n/a	n/a	n/a	n/a	n/a	n/a	n/a	n/a	n/a	
Bend - Plain - Ci: Standard	ejesus@brydenwood.c	2012-02-28T16:44:51	L73121 : Pipes and fittings	Bend - Plain - Ci: Standard	n/a	n/a	n/a	n/a	n/a	n/a	n/a	n/a	778608	n/a	n/a	n/a	n/a	n/a	n/a	n/a	n/a	n/a	n/a	n/a	n/a	n/a	n/a	n/a	n/a	n/a	n/a	n/a	
Boss 88 Deg Opposed Double - Plain - Ci: Standard	ejesus@brydenwood.c	2012-02-28T16:44:51	L73121 : Pipes and fittings	Boss 88 Deg Opposed Double - Plain - Ci: Standard	n/a	n/a	n/a	n/a	n/a	n/a	n/a	n/a	778612	n/a	n/a	n/a	n/a	n/a	n/a	n/a	n/a	n/a	n/a	n/a	n/a	n/a	n/a	n/a	n/a	n/a	n/a	n/a	
Branch 90 Deg Double - Plain - Ci: Standard	ejesus@brydenwood.c	2012-02-28T16:44:51	L73121 : Pipes and fittings	Branch 90 Deg Double - Plain - Ci: Standard	n/a	n/a	n/a	n/a	n/a	n/a	n/a	n/a	778610	n/a	n/a	n/a	n/a	n/a	n/a	n/a	n/a	n/a	n/a	n/a	n/a	n/a	n/a	n/a	n/a	n/a	n/a	n/a	
Coupling - Di: Standard	ejesus@brydenwood.c	2012-02-28T16:44:51	L73121 : Pipes and fittings	Coupling - Di: Standard	n/a	n/a	n/a	n/a	n/a	n/a	n/a	n/a	778608	n/a	n/a	n/a	n/a	n/a	n/a	n/a	n/a	n/a	n/a	n/a	n/a	n/a	n/a	n/a	n/a	n/a	n/a	n/a	
Data Outlet: Plain	ejesus@brydenwood.c	2012-02-28T16:44:51	G5561 : Communications Data networks Computer ne	Data Outlet: Plain	n/a	n/a	n/a	n/a	n/a	n/a	n/a	n/a	466008	n/a	n/a	n/a	n/a	n/a	n/a	n/a	n/a	n/a	n/a	n/a	n/a	n/a	n/a	n/a	n/a	n/a	n/a	n/a	
Data Outlet: TR	ejesus@brydenwood.c	2012-02-28T16:44:51	G5561 : Communications Data networks Computer ne	Data Outlet: TR	n/a	n/a	n/a	n/a	n/a	n/a	n/a	n/a	741029	n/a	n/a	n/a	n/a	n/a	n/a	n/a	n/a	n/a	n/a	n/a	n/a	n/a	n/a	n/a	n/a	n/a	n/a	n/a	
Diaphragm Valve - Straight - 15-50 mm: 15 mm	ejesus@brydenwood.c	2012-02-28T16:44:51	L7117 : Valves for water supply and distribution	Diaphragm Valve - Straight - 15-50 mm: 15 mm	n/a	n/a	n/a	n/a	n/a	n/a	n/a	n/a	778613	n/a	n/a	n/a	n/a	n/a	n/a	n/a	n/a	n/a	n/a	n/a	n/a	n/a	n/a	n/a	n/a	n/a	n/a	n/a	
Diaphragm Valve - Straight - 15-50 mm: 20 mm	ejesus@brydenwood.c	2012-02-28T16:44:51	L7117 : Valves for water supply and distribution	Diaphragm Valve - Straight - 15-50 mm: 20 mm	n/a	n/a	n/a	n/a	n/a	n/a	n/a	n/a	778625	n/a	n/a	n/a	n/a	n/a	n/a	n/a	n/a	n/a	n/a	n/a	n/a	n/a	n/a	n/a	n/a	n/a	n/a	n/a	
Intercom: CRU	ejesus@brydenwood.c	2012-02-28T16:44:51	L7632 : Intercom systems	Intercom: CRU	n/a	n/a	n/a	n/a	n/a	n/a	n/a	n/a	741035	n/a	n/a	n/a	n/a	n/a	n/a	n/a	n/a	n/a	n/a	n/a	n/a	n/a	n/a	n/a	n/a	n/a	n/a	n/a	
Intercom: CS	ejesus@brydenwood.c	2012-02-28T16:44:51	L7632 : Intercom systems	Intercom: CS	n/a	n/a	n/a	n/a	n/a	n/a	n/a	n/a	741031	n/a	n/a	n/a	n/a	n/a	n/a	n/a	n/a	n/a	n/a	n/a	n/a	n/a	n/a	n/a	n/a	n/a	n/a	n/a	
Intercom: ECU	ejesus@brydenwood.c	2012-02-28T16:44:51	L7632 : Intercom systems	Intercom: ECU	n/a	n/a	n/a	n/a	n/a	n/a	n/a	n/a	741033	n/a	n/a	n/a	n/a	n/a	n/a	n/a	n/a	n/a	n/a	n/a	n/a	n/a	n/a	n/a	n/a	n/a	n/a	n/a	
M_Bend - PVC - Sch 40 - DWV: Standard	ejesus@brydenwood.c	2012-02-28T16:44:51	L73121 : Pipes and fittings	M_Bend - PVC - Sch 40 - DWV: Standard	n/a	n/a	n/a	n/a	n/a	n/a	n/a	n/a	778593	n/a	n/a	n/a	n/a	n/a	n/a	n/a	n/a	n/a	n/a	n/a	n/a	n/a	n/a	n/a	n/a	n/a	n/a	n/a	
M_Diffuser Global - Sidelwall - Narrow: 200 x 200	ejesus@brydenwood.c	2012-02-28T16:44:51	G6421 : Terminals Supply and extract ventilation Grills	M_Diffuser Global - Sidelwall - Narrow: 200 x 200	n/a	n/a	n/a	n/a	n/a	n/a	n/a	n/a	756588	n/a	n/a	n/a	n/a	n/a	n/a	n/a	n/a	n/a	n/a	n/a	n/a	n/a	n/a	n/a	n/a	n/a	n/a	n/a	
M_Elbow - Generic: Standard	ejesus@brydenwood.c	2012-02-28T16:44:51	L73121 : Pipes and fittings	M_Elbow - Generic: Standard	n/a	n/a	n/a	n/a	n/a	n/a	n/a	n/a	778601	n/a	n/a	n/a	n/a	n/a	n/a	n/a	n/a	n/a	n/a	n/a	n/a	n/a	n/a	n/a	n/a	n/a	n/a	n/a	
M_Round Takeoff: Standard	ejesus@brydenwood.c	2012-02-28T16:44:51	G6421 : Terminals Supply and extract ventilation Grills	M_Round Takeoff: Standard	n/a	n/a	n/a	n/a	n/a	n/a	n/a	n/a	756569	n/a	n/a	n/a	n/a	n/a	n/a	n/a	n/a	n/a	n/a	n/a	n/a	n/a	n/a	n/a	n/a	n/a	n/a	n/a	
M_SW_Duct Rect FD Actionair 201: FD Actionair 201_rectangul	ejesus@brydenwood.c	2012-02-28T16:44:51	E73 : Ducts	M_SW_Duct Rect FD Actionair 201: FD Actionair 201_rectangul	n/a	Actionair	Series 201	n/a	n/a	n/a	n/a	n/a	756584	n/a	n/a	n/a	n/a	n/a	n/a	n/a	n/a	n/a	n/a	n/a	n/a	n/a	n/a	n/a	n/a	n/a	n/a	n/a	
M_Tee - Generic: Standard	ejesus@brydenwood.c	2012-02-28T16:44:51	L73121 : Pipes and fittings	M_Tee - Generic: Standard	n/a	n/a	n/a	n/a	n/a	n/a	n/a	n/a	778592	n/a	n/a	n/a	n/a	n/a	n/a	n/a	n/a	n/a	n/a	n/a	n/a	n/a	n/a	n/a	n/a	n/a	n/a	n/a	
M_Tee Sanitary - PVC - Sch 40 - DWV: Standard	ejesus@brydenwood.c	2012-02-28T16:44:51	L73121 : Pipes and fittings	M_Tee Sanitary - PVC - Sch 40 - DWV: Standard	n/a	n/a	n/a	n/a	n/a	n/a	n/a	n/a	778594	n/a	n/a	n/a	n/a	n/a	n/a	n/a	n/a	n/a	n/a	n/a	n/a	n/a	n/a	n/a	n/a	n/a	n/a	n/a	
M_Transition - Generic: Standard	ejesus@brydenwood.c	2012-02-28T16:44:51	L73121 : Pipes and fittings	M_Transition - Generic: Standard	n/a	n/a	n/a	n/a	n/a	n/a	n/a	n/a	778595	n/a	n/a	n/a	n/a	n/a	n/a	n/a	n/a	n/a	n/a	n/a	n/a	n/a	n/a	n/a	n/a	n/a	n/a	n/a	
M_WallgateUnit: M_WallgateUnit	ejesus@brydenwood.c	2012-02-28T16:44:51	L73121 : Pipes and fittings	M_WallgateUnit: M_WallgateUnit</																													

Component

brydenwood

Name	CreatedBy	CreatedOn	Type Name	Space	Description	ExtIdentifier	SerialNumber	InstallationDate	WarrantyStartDate	TagNumber	BarCode	AssetIdentifier
Safer Cell 7 Bay FF:1275x1200h:1275x1200h:211810	ejesus@brydenwood.co.uk	2012-01-19T12:27:24	1275x1200h	LO-01A	Safer Cell 7 Bay FF:1275x1200h:1275x1200h:211810	3cBcy7GEjBwPmXo\$zkl3KJ	n/a	n/a	n/a	211810	Generic Ins	n/a
Safer Cell 7 Bay FF:1275x1200h:1275x1200h:211811	ejesus@brydenwood.co.uk	2012-01-19T12:27:24	1275x1200h	LO-02B	Safer Cell 7 Bay FF:1275x1200h:1275x1200h:211811	3cBcy7GEjBwPmXo\$zkl3KI	n/a	n/a	n/a	211811	Generic Ins	n/a
Generic Int DD:1810 x 2110mm:1810 x 2110mm:211798	ejesus@brydenwood.co.uk	2012-01-19T12:27:24	1810 x 2110mm	LO-C01	Generic Int DD:1810 x 2110mm:1810 x 2110mm:211798	3cBcy7GEjBwPmXo\$zkl3Kd	n/a	n/a	n/a	211798	n/a	n/a
3 Way Valve-766487	ejesus@brydenwood.co.uk	2012-02-28T16:44:51	3 Way Valve - 20-100 mm: 15 mm		3 Way Valve - 20-100 mm: 15 mm	766487	n/a	n/a	n/a	n/a	n/a	n/a
3 Way Valve-766488	ejesus@brydenwood.co.uk	2012-02-28T16:44:51	3 Way Valve - 20-100 mm: 15 mm		3 Way Valve - 20-100 mm: 15 mm	766488	n/a	n/a	n/a	n/a	n/a	n/a
Generic Int D Cell Door:790 x 2110mm 3:790 x 2110mm 3:211814	ejesus@brydenwood.co.uk	2012-01-19T12:27:24	790 x 2110mm 3	LO-02B	Generic Int D Cell Door:790 x 2110mm 3:790 x 2110mm 3:211814	3cBcy7GEjBwPmXo\$zkl3KN	n/a	n/a	n/a	211814	n/a	n/a
Generic Int D Cell Door:790 x 2110mm 3:790 x 2110mm 3:211815	ejesus@brydenwood.co.uk	2012-01-19T12:27:24	790 x 2110mm 3	LO-01A	Generic Int D Cell Door:790 x 2110mm 3:790 x 2110mm 3:211815	3cBcy7GEjBwPmXo\$zkl3KM	n/a	n/a	n/a	211815	n/a	n/a
Balancing Damper-747660	ejesus@brydenwood.co.uk	2012-02-28T16:44:51	Balancing Damper - Rectangular: Standard		Balancing Damper - Rectangular: Standard	747660	n/a	n/a	n/a	n/a	n/a	n/a
Balancing Damper-747674	ejesus@brydenwood.co.uk	2012-02-28T16:44:51	Balancing Damper - Rectangular: Standard		Balancing Damper - Rectangular: Standard	747674	n/a	n/a	n/a	n/a	n/a	n/a
Basic Wall:Generic Ext - 150mm:211792	ejesus@brydenwood.co.uk	2012-01-19T12:27:24	Basic Wall:Generic Ext - 150mm	LO-01A , LO-02B	Basic Wall:Generic Ext - 150mm:211792	3cBcy7GEjBwPmXo\$zkl3KN	n/a	n/a	n/a	211792	n/a	n/a
Basic Wall:Generic Ext - 150mm:211793	ejesus@brydenwood.co.uk	2012-01-19T12:27:24	Basic Wall:Generic Ext - 150mm	LO-01A , LO-02B	Basic Wall:Generic Ext - 150mm:211793	3cBcy7GEjBwPmXo\$zkl3KW	n/a	n/a	n/a	211793	n/a	n/a
Basic Wall:Generic Ext - 150mm:211794	ejesus@brydenwood.co.uk	2012-01-19T12:27:24	Basic Wall:Generic Ext - 150mm	LO-01A	Basic Wall:Generic Ext - 150mm:211794	3cBcy7GEjBwPmXo\$zkl3KZ	n/a	n/a	n/a	211794	n/a	n/a
Basic Wall:Generic Ext - 150mm:211795	ejesus@brydenwood.co.uk	2012-01-19T12:27:24	Basic Wall:Generic Ext - 150mm	LO-01A , LO-01A	Basic Wall:Generic Ext - 150mm:211795	3cBcy7GEjBwPmXo\$zkl3KY	n/a	n/a	n/a	211795	n/a	n/a
Basic Wall:Generic Ext - 150mm:211796	ejesus@brydenwood.co.uk	2012-01-19T12:27:24	Basic Wall:Generic Ext - 150mm	LO-02B , LO-02B	Basic Wall:Generic Ext - 150mm:211796	3cBcy7GEjBwPmXo\$zkl3Kb	n/a	n/a	n/a	211796	n/a	n/a
Basic Wall:Generic Ext - 150mm:211797	ejesus@brydenwood.co.uk	2012-01-19T12:27:24	Basic Wall:Generic Ext - 150mm	LO-02B	Basic Wall:Generic Ext - 150mm:211797	3cBcy7GEjBwPmXo\$zkl3Ka	n/a	n/a	n/a	211797	n/a	n/a
Basic Wall:Generic Ext - 150mm:211829	ejesus@brydenwood.co.uk	2012-01-19T12:27:24	Basic Wall:Generic Ext - 150mm	LO-01A	Basic Wall:Generic Ext - 150mm:211829	3cBcy7GEjBwPmXo\$zkl3K4	n/a	n/a	n/a	211829	n/a	n/a
Basic Wall:Generic Ext - 150mm:211830	ejesus@brydenwood.co.uk	2012-01-19T12:27:24	Basic Wall:Generic Ext - 150mm	LO-02B	Basic Wall:Generic Ext - 150mm:211830	3cBcy7GEjBwPmXo\$zkl3K7	n/a	n/a	n/a	211830	n/a	n/a
Basic Wall:Generic Ext - 150mm:211809	ejesus@brydenwood.co.uk	2012-01-19T12:27:24	Basic Wall:Generic Ext - 340mm 2	LO-01A , LO-02B	Basic Wall:Generic Ext - 340mm 2:211809	3cBcy7GEjBwPmXo\$zkl3K6	n/a	n/a	n/a	211809	n/a	n/a
Basic Wall:Generic Ext - 80mm:211799	ejesus@brydenwood.co.uk	2012-01-19T12:27:24	Basic Wall:Generic Ext - 80mm	LO-01A	Basic Wall:Generic Ext - 80mm:211799	3cBcy7GEjBwPmXo\$zkl3Kc	n/a	n/a	n/a	211799	n/a	n/a
Basic Wall:Generic Ext - 80mm:211800	ejesus@brydenwood.co.uk	2012-01-19T12:27:24	Basic Wall:Generic Ext - 80mm	LO-01A	Basic Wall:Generic Ext - 80mm:211800	3cBcy7GEjBwPmXo\$zkl3Kf	n/a	n/a	n/a	211800	n/a	n/a
Basic Wall:Generic Ext - 80mm:211801	ejesus@brydenwood.co.uk	2012-01-19T12:27:24	Basic Wall:Generic Ext - 80mm	LO-02B	Basic Wall:Generic Ext - 80mm:211801	3cBcy7GEjBwPmXo\$zkl3Ke	n/a	n/a	n/a	211801	n/a	n/a
Basic Wall:Generic Ext - 80mm:211802	ejesus@brydenwood.co.uk	2012-01-19T12:27:24	Basic Wall:Generic Ext - 80mm	LO-02B	Basic Wall:Generic Ext - 80mm:211802	3cBcy7GEjBwPmXo\$zkl3Kh	n/a	n/a	n/a	211802	n/a	n/a
Bend -766279	ejesus@brydenwood.co.uk	2012-02-28T16:44:51	Bend - Plain - CI: Standard		Bend - Plain - CI: Standard	766279	n/a	n/a	n/a	n/a	n/a	n/a
Bend -766282	ejesus@brydenwood.co.uk	2012-02-28T16:44:51	Bend - Plain - CI: Standard		Bend - Plain - CI: Standard	766282	n/a	n/a	n/a	n/a	n/a	n/a
Boss 88 -766252	ejesus@brydenwood.co.uk	2012-02-28T16:44:51	Boss 88 Deg Opposed Double - Plain - CI: Standard		Boss 88 Deg Opposed Double - Plain - CI: Standard	766252	n/a	n/a	n/a	n/a	n/a	n/a
Boss 88 -766268	ejesus@brydenwood.co.uk	2012-02-28T16:44:51	Boss 88 Deg Opposed Double - Plain - CI: Standard		Boss 88 Deg Opposed Double - Plain - CI: Standard	766268	n/a	n/a	n/a	n/a	n/a	n/a
Branch 90 -766246	ejesus@brydenwood.co.uk	2012-02-28T16:44:51	Branch 90 Deg Double - Plain - CI: Standard		Branch 90 Deg Double - Plain - CI: Standard	766246	n/a	n/a	n/a	n/a	n/a	n/a
Cell Bed family:Cell Bed family:Cell Bed family:211786	ejesus@brydenwood.co.uk	2012-01-19T12:27:24	Cell Bed family	LO-01A	Cell Bed family:Cell Bed family:Cell Bed family:211786	3cBcy7GEjBwPmXo\$zkl3Kx	n/a	n/a	n/a	211786	n/a	n/a
Cell Bed family:Cell Bed family:Cell Bed family:211804	ejesus@brydenwood.co.uk	2012-01-19T12:27:24	Cell Bed family	LO-02B	Cell Bed family:Cell Bed family:Cell Bed family:211804	3cBcy7GEjBwPmXo\$zkl3Kj	n/a	n/a	n/a	211804	n/a	n/a
Cell Locker:Cell Locker:Cell Locker:211789	ejesus@brydenwood.co.uk	2012-01-19T12:27:24	Cell Locker	LO-01A	Cell Locker:Cell Locker:Cell Locker:211789	3cBcy7GEjBwPmXo\$zkl3Ky	n/a	n/a	n/a	211789	n/a	n/a
Cell Locker:Cell Locker:Cell Locker:211806	ejesus@brydenwood.co.uk	2012-01-19T12:27:24	Cell Locker	LO-02B	Cell Locker:Cell Locker:Cell Locker:211806	3cBcy7GEjBwPmXo\$zkl3KI	n/a	n/a	n/a	211806	n/a	n/a
Coupling -766247	ejesus@brydenwood.co.uk	2012-02-28T16:44:51	Coupling - DI: Standard		Coupling - DI: Standard	766247	n/a	n/a	n/a	n/a	n/a	n/a
Coupling -766248	ejesus@brydenwood.co.uk	2012-02-28T16:44:51	Coupling - DI: Standard		Coupling - DI: Standard	766248	n/a	n/a	n/a	n/a	n/a	n/a
Coupling -766249	ejesus@brydenwood.co.uk	2012-02-28T16:44:51	Coupling - DI: Standard		Coupling - DI: Standard	766249	n/a	n/a	n/a	n/a	n/a	n/a
Coupling -766250	ejesus@brydenwood.co.uk	2012-02-28T16:44:51	Coupling - DI: Standard		Coupling - DI: Standard	766250	n/a	n/a	n/a	n/a	n/a	n/a
Coupling -766255	ejesus@brydenwood.co.uk	2012-02-28T16:44:51	Coupling - DI: Standard		Coupling - DI: Standard	766255	n/a	n/a	n/a	n/a	n/a	n/a
Coupling -766262	ejesus@brydenwood.co.uk	2012-02-28T16:44:51	Coupling - DI: Standard		Coupling - DI: Standard	766262	n/a	n/a	n/a	n/a	n/a	n/a
Coupling -766264	ejesus@brydenwood.co.uk	2012-02-28T16:44:51	Coupling - DI: Standard		Coupling - DI: Standard	766264	n/a	n/a	n/a	n/a	n/a	n/a
Coupling -766276	ejesus@brydenwood.co.uk	2012-02-28T16:44:51	Coupling - DI: Standard		Coupling - DI: Standard	766276	n/a	n/a	n/a	n/a	n/a	n/a
Coupling -766277	ejesus@brydenwood.co.uk	2012-02-28T16:44:51	Coupling - DI: Standard		Coupling - DI: Standard	766277	n/a	n/a	n/a	n/a	n/a	n/a
Coupling -766280	ejesus@brydenwood.co.uk	2012-02-28T16:44:51	Coupling - DI: Standard		Coupling - DI: Standard	766280	n/a	n/a	n/a	n/a	n/a	n/a
Coupling -766283	ejesus@brydenwood.co.uk	2012-02-28T16:44:51	Coupling - DI: Standard		Coupling - DI: Standard	766283	n/a	n/a	n/a	n/a	n/a	n/a
Data Outlet -738998	ejesus@brydenwood.co.uk	2012-02-28T16:44:51	Data Outlet: Plain		Data Outlet: Plain	738998	n/a	n/a	n/a	n/a	n/a	n/a
Data Outlet -738996	ejesus@brydenwood.co.uk	2012-02-28T16:44:51	Data Outlet1: TR		Data Outlet1: TR	738996	n/a	n/a	n/a	n/a	n/a	n/a
Cell Desk:Desk Whitewood:Desk Whitewood:211787	ejesus@brydenwood.co.uk	2012-01-19T12:27:24	Desk Whitewood	LO-01A	Cell Desk:Desk Whitewood:Desk Whitewood:211787	3cBcy7GEjBwPmXo\$zkl3Kw	n/a	n/a	n/a	211787	n/a	n/a
Cell Desk:Desk Whitewood:Desk Whitewood:211805	ejesus@brydenwood.co.uk	2012-01-19T12:27:24	Desk Whitewood	LO-02B	Cell Desk:Desk Whitewood:Desk Whitewood:211805	3cBcy7GEjBwPmXo\$zkl3Ki	n/a	n/a	n/a	211805	n/a	n/a
Diaphragm Valve -766337	ejesus@brydenwood.co.uk	2012-02-28T16:44:51	Diaphragm Valve - Straight - 15-50 mm: 15 mm		Diaphragm Valve - Straight - 15-50 mm: 15 mm	766337	n/a	n/a	n/a	n/a	n/a	n/a
Diaphragm Valve -766339	ejesus@brydenwood.co.uk	2012-02-28T16:44:51	Diaphragm Valve - Straight - 15-50 mm: 15 mm		Diaphragm Valve - Straight - 15-50 mm: 15 mm	766339	n/a	n/a	n/a	n/a	n/a	n/a

Note: Only an excerpt has been included. The full list of 'Components' for the two cells runs to 327 lines



System

brydenwood

Name	CreatedBy	CreatedOn	Category	ComponentNames	ExtIdentifier	Description
Architectural - Electrical	ejesus@brydenwood.co.uk	2012-01-19T12:27:24	G531 : General purpose outlets	TFT Monitor:TFT Monitor:TFT Monitor:211790	n/a	Small power circuit for Level 1
Architectural - Electrical	ejesus@brydenwood.co.uk	2012-01-19T12:27:24	G531 : General purpose outlets	TFT Monitor:TFT Monitor:TFT Monitor:211812	n/a	Small power circuit for Level 1
Architectural - Electrical	ejesus@brydenwood.co.uk	2012-01-19T12:27:24	G531 : General purpose outlets	Mirror:Mirror:Mirror:211825	n/a	Small power circuit for Level 1
Architectural - Electrical	ejesus@brydenwood.co.uk	2012-01-19T12:27:24	G531 : General purpose outlets	Mirror:Mirror:Mirror:211826	n/a	Small power circuit for Level 1
Architectural - Internal fabric	ejesus@brydenwood.co.uk	2012-01-19T12:27:24	G252 : Internal walls and partitions	Generic Int DD:1810 x 2110mm:1810 x 2110mm:211798	n/a	Internal fabric for Level 1
Architectural - Internal fabric	ejesus@brydenwood.co.uk	2012-01-19T12:27:24	G252 : Internal walls and partitions	Generic Int D Cell Door:790 x 2110mm 3:790 x 2110mm 3:211814	n/a	Internal fabric for Level 1
Architectural - Internal fabric	ejesus@brydenwood.co.uk	2012-01-19T12:27:24	G252 : Internal walls and partitions	Generic Int D Cell Door:790 x 2110mm 3:790 x 2110mm 3:211815	n/a	Internal fabric for Level 1
Architectural - Plumbing	ejesus@brydenwood.co.uk	2012-01-19T12:27:24	G58 : Removal/disposal	Plumbing SVP 1:Plumbing SVP 1:Plumbing SVP 1:211824	n/a	Plumbing for Level 1
Architectural - Plumbing	ejesus@brydenwood.co.uk	2012-01-19T12:27:24	G58 : Removal/disposal	WC Pan:510 x 510mm:510 x 510mm:211788	n/a	Plumbing for Level 1
Architectural - Plumbing	ejesus@brydenwood.co.uk	2012-01-19T12:27:24	G58 : Removal/disposal	Wallgate ALS80 Basin:470w x 300d:470w x 300d:211813	n/a	Plumbing for Level 1
Architectural - Plumbing	ejesus@brydenwood.co.uk	2012-01-19T12:27:24	G58 : Removal/disposal	WC Pan:510 x 510mm 2:510 x 510mm 2:211807	n/a	Plumbing for Level 1
Architectural - Plumbing	ejesus@brydenwood.co.uk	2012-01-19T12:27:24	G58 : Removal/disposal	Wallgate ALS80 Basin:470w x 300d:470w x 300d:211808	n/a	Plumbing for Level 1
Architectural - FFE	ejesus@brydenwood.co.uk	2012-01-19T12:27:24	G42 : Rest work FFE	Cell Bed family:Cell Bed family:Cell Bed family:211786	n/a	FFE
Architectural - FFE	ejesus@brydenwood.co.uk	2012-01-19T12:27:24	G42 : Rest work FFE	Cell Desk:Desk Whitewood:Desk Whitewood:211787	n/a	FFE
Architectural - FFE	ejesus@brydenwood.co.uk	2012-01-19T12:27:24	G42 : Rest work FFE	Cell Locker:Cell Locker:Cell Locker:211789	n/a	FFE
Architectural - FFE	ejesus@brydenwood.co.uk	2012-01-19T12:27:24	G42 : Rest work FFE	Safer Seat:Safer Seat:Safer Seat:211791	n/a	FFE
Architectural - FFE	ejesus@brydenwood.co.uk	2012-01-19T12:27:24	G42 : Rest work FFE	Safer Seat:Safer Seat:Safer Seat:211803	n/a	FFE
Architectural - FFE	ejesus@brydenwood.co.uk	2012-01-19T12:27:24	G42 : Rest work FFE	Cell Bed family:Cell Bed family:Cell Bed family:211804	n/a	FFE
Architectural - FFE	ejesus@brydenwood.co.uk	2012-01-19T12:27:24	G42 : Rest work FFE	Cell Desk:Desk Whitewood:Desk Whitewood:211805	n/a	FFE
Architectural - FFE	ejesus@brydenwood.co.uk	2012-01-19T12:27:24	G42 : Rest work FFE	Cell Locker:Cell Locker:Cell Locker:211806	n/a	FFE
Architectural - Internal fabric	ejesus@brydenwood.co.uk	2012-01-19T12:27:24	G252 : Internal walls and partitions	Basic Wall:Generic Ext - 150mm:211792	n/a	Internal fabric for Level 1
Architectural - Internal fabric	ejesus@brydenwood.co.uk	2012-01-19T12:27:24	G252 : Internal walls and partitions	Basic Wall:Generic Ext - 150mm:211793	n/a	Internal fabric for Level 1
Architectural - Internal fabric	ejesus@brydenwood.co.uk	2012-01-19T12:27:24	G252 : Internal walls and partitions	Basic Wall:Generic Ext - 150mm:211794	n/a	Internal fabric for Level 1
Architectural - Internal fabric	ejesus@brydenwood.co.uk	2012-01-19T12:27:24	G252 : Internal walls and partitions	Basic Wall:Generic Ext - 150mm:211795	n/a	Internal fabric for Level 1
Architectural - Internal fabric	ejesus@brydenwood.co.uk	2012-01-19T12:27:24	G252 : Internal walls and partitions	Basic Wall:Generic Ext - 150mm:211796	n/a	Internal fabric for Level 1
Architectural - Internal fabric	ejesus@brydenwood.co.uk	2012-01-19T12:27:24	G252 : Internal walls and partitions	Basic Wall:Generic Ext - 150mm:211797	n/a	Internal fabric for Level 1
Architectural - Internal fabric	ejesus@brydenwood.co.uk	2012-01-19T12:27:24	G252 : Internal walls and partitions	Basic Wall:Generic Ext - 80mm:211799	n/a	Internal fabric for Level 1
Architectural - Internal fabric	ejesus@brydenwood.co.uk	2012-01-19T12:27:24	G252 : Internal walls and partitions	Basic Wall:Generic Ext - 80mm:211800	n/a	Internal fabric for Level 1
Architectural - Internal fabric	ejesus@brydenwood.co.uk	2012-01-19T12:27:24	G252 : Internal walls and partitions	Basic Wall:Generic Ext - 80mm:211801	n/a	Internal fabric for Level 1
Architectural - Internal fabric	ejesus@brydenwood.co.uk	2012-01-19T12:27:24	G252 : Internal walls and partitions	Basic Wall:Generic Ext - 80mm:211802	n/a	Internal fabric for Level 1
Architectural - External envelope	ejesus@brydenwood.co.uk	2012-01-19T12:27:24	G251 : External walls	Basic Wall:Generic Ext - 340mm 2:211809	n/a	External envelope for Level 1
Architectural - External envelope	ejesus@brydenwood.co.uk	2012-01-19T12:27:24	G251 : External walls	Basic Wall:Generic Ext - 150mm:211829	n/a	External envelope for Level 1
Architectural - External envelope	ejesus@brydenwood.co.uk	2012-01-19T12:27:24	G251 : External walls	Basic Wall:Generic Ext - 150mm:211830	n/a	External envelope for Level 1
Architectural - External envelope	ejesus@brydenwood.co.uk	2012-01-19T12:27:24	G251 : External walls	Safer Cell 7 Bay FF:1275x1200h:1275x1200h:211810	n/a	External envelope for Level 1
Architectural - External envelope	ejesus@brydenwood.co.uk	2012-01-19T12:27:24	G251 : External walls	Safer Cell 7 Bay FF:1275x1200h:1275x1200h:211811	n/a	External envelope for Level 1
MEP - Plumbing	ejesus@brydenwood.co.uk	2012-02-28T16:44:51	G632 : Pipework	3 Way Valve-766487	786234	MEP - Plumbing
MEP - Plumbing	ejesus@brydenwood.co.uk	2012-02-28T16:44:51	G632 : Pipework	3 Way Valve-766488	786234	MEP - Plumbing
MEP - Plumbing	ejesus@brydenwood.co.uk	2012-02-28T16:44:51	G632 : Pipework	Bend -766279	786234	MEP - Plumbing
MEP - Plumbing	ejesus@brydenwood.co.uk	2012-02-28T16:44:51	G632 : Pipework	Bend -766282	786234	MEP - Plumbing

Note: Only an excerpt has been included. The full list of 'Systems' for the two cells runs to 301 lines



Assembly

Name	CreatedBy	CreatedOn	AssemblyType	SheetName	ParentName	ChildNames	ExtObject	ExtIdentifier	Description
Basic Wall:Generic Ext - 150mm layer 01	ejesus@brydenwood.co.uk	2012-01-19T12:27:24	Layer	Type	Basic Wall:Generic Ext - 150mm	Generic	IfcMaterialLayer	n/a	Generic : 150.
Basic Wall:Generic Ext - 80mm layer 01	ejesus@brydenwood.co.uk	2012-01-19T12:27:24	Layer	Type	Basic Wall:Generic Ext - 80mm	Generic	IfcMaterialLayer	n/a	Generic : 80.
Basic Wall:Generic Ext - 340mm 2 layer 01	ejesus@brydenwood.co.uk	2012-01-19T12:27:24	Layer	Type	Basic Wall:Generic Ext - 340mm 2	Material Brickwork	IfcMaterialLayer	n/a	Material Brickwork : 100.
Basic Wall:Generic Ext - 340mm 2 layer 02	ejesus@brydenwood.co.uk	2012-01-19T12:27:24	Layer	Type	Basic Wall:Generic Ext - 340mm 2	Generic Inserts	IfcMaterialLayer	n/a	Generic Inserts : 50.
Basic Wall:Generic Ext - 340mm 2 layer 03	ejesus@brydenwood.co.uk	2012-01-19T12:27:24	Layer	Type	Basic Wall:Generic Ext - 340mm 2	Generic Inserts	IfcMaterialLayer	n/a	Generic Inserts : 40.
Basic Wall:Generic Ext - 340mm 2 layer 04	ejesus@brydenwood.co.uk	2012-01-19T12:27:24	Layer	Type	Basic Wall:Generic Ext - 340mm 2	Concrete (Painted)	IfcMaterialLayer	n/a	Concrete (Painted) : 150.

Connection

Name	CreatedBy	CreatedOn	ConnectionType	SheetName	RowName1	RowName2	RealizingElement	PortName1	PortName2	ExtSystem	ExtObject	ExtIdentifier	Description

Note: There are currently no 'Connections' in the model

Spare

Name	CreatedBy	CreatedOn	Category	TypeName	Suppliers	ExtSystem	ExtObject	ExtIdentifier	Description	SetNumber	PartNumber
1810 x 2110mm Replacement Parts List	ejesus@br	2012-01-19T12:27:24	SpareSet	1810 x 2110mm	n/a		IfcConstructionProductResource		1810 x 2110mm	n/a	n/a
790 x 2110mm 3 Replacement Parts List	ejesus@br	2012-01-19T12:27:24	SpareSet	790 x 2110mm 3	n/a		IfcConstructionProductResource		790 x 2110mm 3	n/a	n/a
Cell Bed family Replacement Parts List	ejesus@br	2012-01-19T12:27:24	SpareSet	Cell Bed family	n/a		IfcConstructionProductResource		Cell Bed family	n/a	n/a
Desk Whitewood Replacement Parts List	ejesus@br	2012-01-19T12:27:24	SpareSet	Desk Whitewood	n/a		IfcConstructionProductResource		Desk Whitewood	n/a	n/a
Cell Locker Replacement Parts List	ejesus@br	2012-01-19T12:27:24	SpareSet	Cell Locker	n/a		IfcConstructionProductResource		Cell Locker	n/a	n/a
Safer Seat Replacement Parts List	ejesus@br	2012-01-19T12:27:24	SpareSet	Safer Seat	n/a		IfcConstructionProductResource		Safer Seat	n/a	n/a
1275x1200h Replacement Parts List	ejesus@br	2012-01-19T12:27:24	SpareSet	1275x1200h	n/a		IfcConstructionProductResource		1275x1200h	n/a	n/a
TFT Monitor Replacement Parts List	nn@aec3.d	2012-01-20T10:01:14	SpareSet	TFT Monitor	n/a		IfcConstructionProductResource		TFT Monitor	n/a	n/a
Mirror Replacement Parts List	nn@aec3.d	2012-01-20T10:01:14	SpareSet	Mirror	n/a		IfcConstructionProductResource		Mirror	n/a	n/a
Plumbing SVP 1 Replacement Parts List	nn@aec3.d	2012-01-20T10:01:14	SpareSet	Plumbing SVP 1	n/a		IfcConstructionProductResource		Plumbing SVP 1	n/a	n/a
WC Pan 510 x 510mm Replacement Parts List	nn@aec3.d	2012-01-20T10:01:14	SpareSet	WC Pan 510 x 510mm	n/a		IfcConstructionProductResource		WC Pan 510 x 510mm	n/a	n/a
Wallgate ALS80 Basin 470w x 300d Replacement Parts List	nn@aec3.d	2012-01-20T10:01:14	SpareSet	Wallgate ALS80 Basin 470w x 300d	n/a		IfcConstructionProductResource		Wallgate ALS80 Basin 470w x 300d	n/a	n/a

Resource

Name	CreatedBy	CreatedOn	Category	ExtSystem	ExtObject	ExtIdentifier	Description

Note: There are currently no 'Resources' in the model (this would be added at drop 4)

Job

Name	CreatedBy	CreatedOn	Category	Status	TypeName	Description	Duration	DurationUnit	Start	TaskStartUnit	Frequency	FrequencyUnit	ExtObject	ExtIdentifier	TaskNumber	Priors	ResourceNames
1810 x 2110mm Maintenance Schedule	ejesus@br	2012-01-19T12:27:24	PM	Not Yet Started	1810 x 2110	1810 x 2110mm	n/a	hour	n/a	n/a	n/a	year	IfcTask		n/a	n/a	n/a
790 x 2110mm 3 Maintenance Schedule	ejesus@br	2012-01-19T12:27:24	PM	Not Yet Started	790 x 2110	790 x 2110mm 3	n/a	hour	n/a	n/a	n/a	year	IfcTask		n/a	n/a	n/a
Cell Bed family Maintenance Schedule	ejesus@br	2012-01-19T12:27:24	PM	Not Yet Started	Cell Bed fa	Cell Bed family	n/a	hour	n/a	n/a	n/a	year	IfcTask		n/a	n/a	n/a
Desk Whitewood Maintenance Schedule	ejesus@br	2012-01-19T12:27:24	PM	Not Yet Started	Desk Whit	Desk Whitewood	n/a	hour	n/a	n/a	n/a	year	IfcTask		n/a	n/a	n/a
Cell Locker Maintenance Schedule	ejesus@br	2012-01-19T12:27:24	PM	Not Yet Started	Cell Locker	Cell Locker	n/a	hour	n/a	n/a	n/a	year	IfcTask		n/a	n/a	n/a
Safer Seat Maintenance Schedule	ejesus@br	2012-01-19T12:27:24	PM	Not Yet Started	Safer Seat	Safer Seat	n/a	hour	n/a	n/a	n/a	year	IfcTask		n/a	n/a	n/a
1275x1200h Maintenance Schedule	ejesus@br	2012-01-19T12:27:24	PM	Not Yet Started	1275x1200	1275x1200h	n/a	hour	n/a	n/a	n/a	year	IfcTask		n/a	n/a	n/a
TFT Monitor Maintenance Schedule	nn@aec3.d	2012-01-20T10:01:14	PM	Not Yet Started	TFT Monit	TFT Monitor	n/a	hour	n/a	n/a	n/a	year	IfcTask		n/a	n/a	n/a
Mirror Maintenance Schedule	nn@aec3.d	2012-01-20T10:01:14	PM	Not Yet Started	Mirror	Mirror	n/a	hour	n/a	n/a	n/a	year	IfcTask		n/a	n/a	n/a
Plumbing SVP 1 Maintenance Schedule	nn@aec3.d	2012-01-20T10:01:14	PM	Not Yet Started	Plumbing	Plumbing SVP 1	n/a	hour	n/a	n/a	n/a	year	IfcTask		n/a	n/a	n/a
WC Pan 510 x 510mm Maintenance Schedule	nn@aec3.d	2012-01-20T10:01:14	PM	Not Yet Started	WC Pan 51	WC Pan 510 x 510mm	n/a	hour	n/a	n/a	n/a	year	IfcTask		n/a	n/a	n/a
Wallgate ALS80 Basin 470w x 300d Maintenance Schedule	nn@aec3.d	2012-01-20T10:01:14	PM	Not Yet Started	Wallgate A	Wallgate ALS80 Basin 470w x 300d	n/a	hour	n/a	n/a	n/a	year	IfcTask		n/a	n/a	n/a

Impact

Name	CreatedBy	CreatedOn	ImpactType	ImpactStage	SheetName	RowName	Value	ImpactUnit	LeadInTime	Duration	LeadOutTime	ExtSystem	ExtObject	ExtIdentifier	Description
1275x1200h Cost of production	nn@aec3.com	2012-01-20T10:01:14	Cost	production	Type	1275x1200h	500	currency	0	0	0				
1810 x 2110mm Cost of production	nn@aec3.com	2012-01-20T10:01:14	Cost	production	Type	1810 x 2110mm	500	currency	0	0	0				
790 x 2110mm 3 Cost of production	nn@aec3.com	2012-01-20T10:01:14	Cost	production	Type	790 x 2110mm 3	500	currency	0	0	0				
Basic Wall:Generic Ext - 150mm Cost of production	nn@aec3.com	2012-01-20T10:01:14	Cost	production	Type	Basic Wall:Generic Ext -	500	currency	0	0	0				per area
Basic Wall:Generic Ext - 340mm 2 Cost of production	nn@aec3.com	2012-01-20T10:01:14	Cost	production	Type	Basic Wall:Generic Ext -	500	currency	0	0	0				per area
Basic Wall:Generic Ext - 80mm Cost of production	nn@aec3.com	2012-01-20T10:01:14	Cost	production	Type	Basic Wall:Generic Ext -	500	currency	0	0	0				per area
Cell Bed family Cost of production	nn@aec3.com	2012-01-20T10:01:14	Cost	production	Type	Cell Bed family	500	currency	0	0	0				
Cell Locker Cost of production	nn@aec3.com	2012-01-20T10:01:14	Cost	production	Type	Cell Locker	500	currency	0	0	0				
Concrete (Painted) Cost of production	nn@aec3.com	2012-01-20T10:01:14	Cost	production	Type	Concrete (Painted)	500	currency	0	0	0				
Desk Whitewood Cost of production	nn@aec3.com	2012-01-20T10:01:14	Cost	production	Type	Desk Whitewood	500	currency	0	0	0				
Generic Cost of production	nn@aec3.com	2012-01-20T10:01:14	Cost	production	Type	Generic	500	currency	0	0	0				
Generic Inserts Cost of production	nn@aec3.com	2012-01-20T10:01:14	Cost	production	Type	Generic Inserts	500	currency	0	0	0				
Material Brickwork Cost of production	nn@aec3.com	2012-01-20T10:01:14	Cost	production	Type	Material Brickwork	500	currency	0	0	0				
Mirror Cost of production	nn@aec3.com	2012-01-20T10:01:14	Cost	production	Type	Mirror	500	currency	0	0	0				
Mirror PrimaryEnergyConsumption of use	nn@aec3.com	2012-01-20T10:01:14	PrimaryEnergyConsumption	use	Type	Mirror	500	MJ	0	1	0				
Plumbing SVP 1 Cost of production	nn@aec3.com	2012-01-20T10:01:14	Cost	production	Type	Plumbing SVP 1	500	currency	0	0	0				per length
Safer Seat Cost of production	nn@aec3.com	2012-01-20T10:01:14	Cost	production	Type	Safer Seat	500	currency	0	0	0				
TFT Monitor Cost of production	nn@aec3.com	2012-01-20T10:01:14	Cost	production	Type	TFT Monitor	500	currency	0	0	0				
TFT Monitor PrimaryEnergyConsumption of use	nn@aec3.com	2012-01-20T10:01:14	PrimaryEnergyConsumption	use	Type	TFT Monitor	500	MJ	0	1	0				
Wallgate ALS80 Basin 470w x 300d Cost of maintenance	nn@aec3.com	2012-01-20T10:01:14	Cost	maintenance	Type	Wallgate ALS80 Basin 4	50	currency	2	1	3				
Wallgate ALS80 Basin 470w x 300d Cost of production	nn@aec3.com	2012-01-20T10:01:14	Cost	production	Type	Wallgate ALS80 Basin 4	400	currency	0	0	0				
Wallgate ALS80 Basin 470w x 300d Cost of replacement	nn@aec3.com	2012-01-20T10:01:14	Cost	replacement	Type	Wallgate ALS80 Basin 4	500	currency	0	5	0				
WC Pan 510 x 510mm Cost of maintenance	nn@aec3.com	2012-01-20T10:01:14	Cost	maintenance	Type	WC Pan 510 x 510mm	50	currency	3	1	2				
WC Pan 510 x 510mm Cost of production	nn@aec3.com	2012-01-20T10:01:14	Cost	production	Type	WC Pan 510 x 510mm	500	currency	0	0	0				
WC Pan 510 x 510mm Cost of replacement	nn@aec3.com	2012-01-20T10:01:14	Cost	replacement	Type	WC Pan 510 x 510mm	600	currency	0	10	0				

Document

Name	CreatedBy	CreatedOn	Category	ApprovalBy	Stage	SheetName	RowName	Directory	File	ExtObject	ExtIdentifier	Description	Reference
1810 x 2110mm Product Data	ejesus@br	2012-01-19T12:27:24	Product Data	Information Only	Requirement	Type	1810 x 2110mm	n/a	n/a	lfcDoorStyle	1CDIQ4E3j8dvdnBU\$	1810 x 2110mm	1810 x 2110mm
790 x 2110mm 3 Product Data	ejesus@br	2012-01-19T12:27:24	Product Data	Information Only	Requirement	Type	790 x 2110mm 3	n/a	n/a	lfcDoorStyle	1uSEc\$Y8991R7F_wm	790 x 2110mm 3	790 x 2110mm 3
Cell Bed family Product Data	ejesus@br	2012-01-19T12:27:24	Product Data	Information Only	Requirement	Type	Cell Bed family	n/a	n/a	lfcFurnitureType	0uCr33MTbD2f0EID1Z	Cell Bed family	Cell Bed family
Desk Whitewood Product Data	ejesus@br	2012-01-19T12:27:24	Product Data	Information Only	Requirement	Type	Desk Whitewood	n/a	n/a	lfcFurnitureType	0uCr33MTbD2f0EID1Z	Desk Whitewood	Desk Whitewood
Cell Locker Product Data	ejesus@br	2012-01-19T12:27:24	Product Data	Information Only	Requirement	Type	Cell Locker	n/a	n/a	lfcFurnitureType	0uCr33MTbD2f0EID1Z	Cell Locker	Cell Locker
Safer Seat Product Data	ejesus@br	2012-01-19T12:27:24	Product Data	Information Only	Requirement	Type	Safer Seat	n/a	n/a	lfcFurnitureType	0uCr33MTbD2f0EID1Z	Safer Seat	Safer Seat
1275x1200h Product Data	ejesus@br	2012-01-19T12:27:24	Product Data	Information Only	Requirement	Type	1275x1200h	n/a	n/a	lfcWindowStyle	1ZA_U6nV93MPFF\$9C	1275x1200h	1275x1200h



Attribute

Name	CreatedBy	CreatedOn	Category	SheetName	RowName	Value	Unit	Description
Author	ejesus@brydenwood.co.uk	2012-03-14T10:01:14	Requirement	Facility	StandardCell	n/a	n/a	Author
Project Issue Date	ejesus@brydenwood.co.uk	2012-03-14T10:01:14	Requirement	Facility	StandardCell	Issue Date	n/a	Project Issue Date
Project Status	ejesus@brydenwood.co.uk	2012-03-14T10:01:14	Requirement	Facility	StandardCell	Project Status	n/a	Project Status
Client Name	ejesus@brydenwood.co.uk	2012-03-14T10:01:14	Requirement	Facility	StandardCell	Moj	n/a	Client Name
Benefit	ejesus@brydenwood.co.uk	2012-03-14T10:01:14	Requirement	Facility	StandardCell		2 client	Beneficial measure
Computation Height	ejesus@brydenwood.co.uk	2012-03-14T10:01:14	Requirement	Floor	Level 0		0.000 DUT_MILLIMET	DisplayValue='0.0'; ReadOnly='False'; Shared='False'; DefinitionType='Length'
Elevation	ejesus@brydenwood.co.uk	2012-03-14T10:01:14	Requirement	Floor	Level 0		0.000 DUT_MILLIMET	DisplayValue='0.0'; ReadOnly='False'; Shared='False'; DefinitionType='Length'
Name	ejesus@brydenwood.co.uk	2012-03-14T10:01:14	Requirement	Floor	Level 0	Level 0	n/a	DisplayValue=''; ReadOnly='False'; Shared='False'; DefinitionType='Text'
Computation Height	ejesus@brydenwood.co.uk	2012-03-14T10:01:14	Requirement	Floor	Level 1		0.000 DUT_MILLIMET	DisplayValue='0.0'; ReadOnly='False'; Shared='False'; DefinitionType='Length'
Name	ejesus@brydenwood.co.uk	2012-03-14T10:01:14	Requirement	Floor	Level 1	Level 1	n/a	DisplayValue=''; ReadOnly='False'; Shared='False'; DefinitionType='Text'
Elevation	ejesus@brydenwood.co.uk	2012-03-14T10:01:14	Requirement	Floor	Level 1		13.123 DUT_MILLIMET	DisplayValue='4000.0'; ReadOnly='False'; Shared='False'; DefinitionType='Length'
Phase	ejesus@brydenwood.co.uk	2012-03-14T10:01:14	Requirement	Space	1	[Id='0', Category='Phases', Name='New Construc	n/a	DisplayValue=''; ReadOnly='True'; Shared='False'; DefinitionType='Invalid'
Name	ejesus@brydenwood.co.uk	2012-03-14T10:01:14	Requirement	Space	1	Room	n/a	DisplayValue=''; ReadOnly='False'; Shared='False'; DefinitionType='Text'
Number	ejesus@brydenwood.co.uk	2012-03-14T10:01:14	Requirement	Space	1		1.000 n/a	DisplayValue=''; ReadOnly='False'; Shared='False'; DefinitionType='Text'
Base Offset	ejesus@brydenwood.co.uk	2012-03-14T10:01:14	Requirement	Space	1		0.000 DUT_MILLIMET	DisplayValue='0.0'; ReadOnly='False'; Shared='False'; DefinitionType='Length'
Limit Offset	ejesus@brydenwood.co.uk	2012-03-14T10:01:14	Requirement	Space	1		0.000 DUT_MILLIMET	DisplayValue='0.0'; ReadOnly='False'; Shared='False'; DefinitionType='Length'
Computation Height	ejesus@brydenwood.co.uk	2012-03-14T10:01:14	Requirement	Space	1		0.000 DUT_MILLIMET	DisplayValue='0.0'; ReadOnly='True'; Shared='False'; DefinitionType='Length'
Unbounded Height	ejesus@brydenwood.co.uk	2012-03-14T10:01:14	Requirement	Space	1		0.000 DUT_MILLIMET	DisplayValue='0.0'; ReadOnly='True'; Shared='False'; DefinitionType='Length'
Base Offset	ejesus@brydenwood.co.uk	2012-03-14T10:01:14	Requirement	Space	2		0 DUT_MILLIMET	DisplayValue='0.0'; ReadOnly='False'; Shared='False'; DefinitionType='Length'
Name	ejesus@brydenwood.co.uk	2012-03-14T10:01:14	Requirement	Space	2	Room	n/a	DisplayValue=''; ReadOnly='False'; Shared='False'; DefinitionType='Text'
Number	ejesus@brydenwood.co.uk	2012-03-14T10:01:14	Requirement	Space	2		2 n/a	DisplayValue=''; ReadOnly='False'; Shared='False'; DefinitionType='Text'
Computation Height	ejesus@brydenwood.co.uk	2012-03-14T10:01:14	Requirement	Space	2		0 DUT_MILLIMET	DisplayValue='0.0'; ReadOnly='True'; Shared='False'; DefinitionType='Length'
Unbounded Height	ejesus@brydenwood.co.uk	2012-03-14T10:01:14	Requirement	Space	2		0 DUT_MILLIMET	DisplayValue='0.0'; ReadOnly='True'; Shared='False'; DefinitionType='Length'
Limit Offset	ejesus@brydenwood.co.uk	2012-03-14T10:01:14	Requirement	Space	2		0 DUT_MILLIMET	DisplayValue='0.0'; ReadOnly='False'; Shared='False'; DefinitionType='Length'
Phase	ejesus@brydenwood.co.uk	2012-03-14T10:01:14	Requirement	Space	2	[Id='0', Category='Phases', Name='New Construc	n/a	DisplayValue=''; ReadOnly='True'; Shared='False'; DefinitionType='Invalid'
Unbounded Height	ejesus@brydenwood.co.uk	2012-03-14T10:01:14	Requirement	Space	3		0.0 DUT_MILLIMET	DisplayValue='0.0'; ReadOnly='True'; Shared='False'; DefinitionType='Length'
Number	ejesus@brydenwood.co.uk	2012-03-14T10:01:14	Requirement	Space	3		3.0 n/a	DisplayValue=''; ReadOnly='False'; Shared='False'; DefinitionType='Text'
Phase	ejesus@brydenwood.co.uk	2012-03-14T10:01:14	Requirement	Space	3	[Id='0', Category='Phases', Name='New Construc	n/a	DisplayValue=''; ReadOnly='True'; Shared='False'; DefinitionType='Invalid'
Base Offset	ejesus@brydenwood.co.uk	2012-03-14T10:01:14	Requirement	Space	3		0.0 DUT_MILLIMET	DisplayValue='0.0'; ReadOnly='False'; Shared='False'; DefinitionType='Length'
Limit Offset	ejesus@brydenwood.co.uk	2012-03-14T10:01:14	Requirement	Space	3		0.0 DUT_MILLIMET	DisplayValue='0.0'; ReadOnly='False'; Shared='False'; DefinitionType='Length'
Name	ejesus@brydenwood.co.uk	2012-03-14T10:01:14	Requirement	Space	3	Room	n/a	DisplayValue=''; ReadOnly='False'; Shared='False'; DefinitionType='Text'
Computation Height	ejesus@brydenwood.co.uk	2012-03-14T10:01:14	Requirement	Space	3		0 DUT_MILLIMET	DisplayValue='0.0'; ReadOnly='True'; Shared='False'; DefinitionType='Length'
Name	ejesus@brydenwood.co.uk	2012-03-14T10:01:14	Requirement	Space	4	Room	n/a	DisplayValue=''; ReadOnly='False'; Shared='False'; DefinitionType='Text'
Limit Offset	ejesus@brydenwood.co.uk	2012-03-14T10:01:14	Requirement	Space	4		0.0 DUT_MILLIMET	DisplayValue='0.0'; ReadOnly='False'; Shared='False'; DefinitionType='Length'
Base Offset	ejesus@brydenwood.co.uk	2012-03-14T10:01:14	Requirement	Space	4		0.0 DUT_MILLIMET	DisplayValue='0.0'; ReadOnly='False'; Shared='False'; DefinitionType='Length'
Number	ejesus@brydenwood.co.uk	2012-03-14T10:01:14	Requirement	Space	4		4 n/a	DisplayValue=''; ReadOnly='False'; Shared='False'; DefinitionType='Text'
Computation Height	ejesus@brydenwood.co.uk	2012-03-14T10:01:14	Requirement	Space	4		0 DUT_MILLIMET	DisplayValue='0.0'; ReadOnly='True'; Shared='False'; DefinitionType='Length'
Unbounded Height	ejesus@brydenwood.co.uk	2012-03-14T10:01:14	Requirement	Space	4		0 DUT_MILLIMET	DisplayValue='0.0'; ReadOnly='True'; Shared='False'; DefinitionType='Length'
Phase	ejesus@brydenwood.co.uk	2012-03-14T10:01:14	Requirement	Space	4	[Id='0', Category='Phases', Name='New Construc	n/a	DisplayValue=''; ReadOnly='True'; Shared='False'; DefinitionType='Invalid'
Limit Offset	ejesus@brydenwood.co.uk	2012-03-14T10:01:14	Requirement	Space	5		0 DUT_MILLIMET	DisplayValue='0.0'; ReadOnly='False'; Shared='False'; DefinitionType='Length'
Base Offset	ejesus@brydenwood.co.uk	2012-03-14T10:01:14	Requirement	Space	5		0 DUT_MILLIMET	DisplayValue='0.0'; ReadOnly='False'; Shared='False'; DefinitionType='Length'
Phase	ejesus@brydenwood.co.uk	2012-03-14T10:01:14	Requirement	Space	5	[Id='0', Category='Phases', Name='New Construc	n/a	DisplayValue=''; ReadOnly='True'; Shared='False'; DefinitionType='Invalid'
Name	ejesus@brydenwood.co.uk	2012-03-14T10:01:14	Requirement	Space	5	Room	n/a	DisplayValue=''; ReadOnly='False'; Shared='False'; DefinitionType='Text'
Unbounded Height	ejesus@brydenwood.co.uk	2012-03-14T10:01:14	Requirement	Space	5		0 DUT_MILLIMET	DisplayValue='0.0'; ReadOnly='True'; Shared='False'; DefinitionType='Length'
Computation Height	ejesus@brydenwood.co.uk	2012-03-14T10:01:14	Requirement	Space	5		0 DUT_MILLIMET	DisplayValue='0.0'; ReadOnly='True'; Shared='False'; DefinitionType='Length'
Number	ejesus@brydenwood.co.uk	2012-03-14T10:01:14	Requirement	Space	5		5 n/a	DisplayValue=''; ReadOnly='False'; Shared='False'; DefinitionType='Text'
Name	ejesus@brydenwood.co.uk	2012-03-14T10:01:14	Requirement	Space	6	Room	n/a	DisplayValue=''; ReadOnly='False'; Shared='False'; DefinitionType='Text'
Computation Height	ejesus@brydenwood.co.uk	2012-03-14T10:01:14	Requirement	Space	6		0.0 DUT_MILLIMET	DisplayValue='0.0'; ReadOnly='True'; Shared='False'; DefinitionType='Length'
Base Offset	ejesus@brydenwood.co.uk	2012-03-14T10:01:14	Requirement	Space	6		0.0 DUT_MILLIMET	DisplayValue='0.0'; ReadOnly='False'; Shared='False'; DefinitionType='Length'

Note: Only an excerpt has been included. The full list of 'Attributes' for the two cells runs to 1,481 lines

Coordinate

Name	CreatedBy	CreatedOn	Category	SheetName	RowName	CoordinateXAxis	CoordinateYAxis	CoordinateZAxis	ExtIdentifier	ClockwiseRotation	ElevationalRotation	YawRotation
Level 0 point	ejesus@brydenwood.co.uk	2012-01-19T12:27:24	point	Floor	Level 0	0	0	0	1TB8MXxl	0	0	0
L0-01A box-lowerleft	ejesus@brydenwood.co.uk	2012-01-19T12:27:24	box-lowerleft	Space	L0-01A	0	0	0	3cBcy7GEj	0	0	0
L0-01A box-uppright	ejesus@brydenwood.co.uk	2012-01-19T12:27:24	box-uppright	Space	L0-01A	0	0	2500	3cBcy7GEj	0	0	0
L0-02B box-lowerleft	ejesus@brydenwood.co.uk	2012-01-19T12:27:24	box-lowerleft	Space	L0-02B	0	0	0	3cBcy7GEj	0	0	0
L0-02B box-uppright	ejesus@brydenwood.co.uk	2012-01-19T12:27:24	box-uppright	Space	L0-02B	0	0	2500	3cBcy7GEj	0	0	0
TFT Monitor:TFT Monitor:TFT Monitor:211812 box-lowerleft	ejesus@brydenwood.co.uk	2012-01-19T12:27:24	box-lowerleft	Component	TFT Monitor:TFT Monitor:TFT Monitor:211812	-7289.6	1966.762	1000	3cBcy7GEj	0	0	0
TFT Monitor:TFT Monitor:TFT Monitor:211812 box-uppright	ejesus@brydenwood.co.uk	2012-01-19T12:27:24	box-uppright	Component	TFT Monitor:TFT Monitor:TFT Monitor:211812	-7289.6	1966.762	1000	3cBcy7GEj	0	0	0
Mirror:Mirror:Mirror:211825 box-lowerleft	ejesus@brydenwood.co.uk	2012-01-19T12:27:24	box-lowerleft	Component	Mirror:Mirror:Mirror:211825	-8015.93	335.0426	1200	3cBcy7GEj	0	0	0
Mirror:Mirror:Mirror:211825 box-uppright	ejesus@brydenwood.co.uk	2012-01-19T12:27:24	box-uppright	Component	Mirror:Mirror:Mirror:211825	-8015.93	335.0426	1200	3cBcy7GEj	0	0	0
TFT Monitor:TFT Monitor:TFT Monitor:211790 box-lowerleft	ejesus@brydenwood.co.uk	2012-01-19T12:27:24	box-lowerleft	Component	TFT Monitor:TFT Monitor:TFT Monitor:211790	-6456.3	2073.593	1000	3cBcy7GEj	0	0	0
TFT Monitor:TFT Monitor:TFT Monitor:211790 box-uppright	ejesus@brydenwood.co.uk	2012-01-19T12:27:24	box-uppright	Component	TFT Monitor:TFT Monitor:TFT Monitor:211790	-6456.3	2073.593	1000	3cBcy7GEj	0	0	0
Mirror:Mirror:Mirror:211826 box-lowerleft	ejesus@brydenwood.co.uk	2012-01-19T12:27:24	box-lowerleft	Component	Mirror:Mirror:Mirror:211826	-5847.36	350.9741	1200	3cBcy7GEj	0	0	0
Mirror:Mirror:Mirror:211826 box-uppright	ejesus@brydenwood.co.uk	2012-01-19T12:27:24	box-uppright	Component	Mirror:Mirror:Mirror:211826	-5847.36	350.9741	1200	3cBcy7GEj	0	0	0
Generic Int DD:1810 x 2110mm:1810 x 2110mm:211798 box-lowerleft	ejesus@brydenwood.co.uk	2012-01-19T12:27:24	box-lowerleft	Component	Generic Int DD:1810 x 2110mm:1810 x 2110mm:211798	0	0	0	3cBcy7GEj	0	0	0
Generic Int DD:1810 x 2110mm:1810 x 2110mm:211798 box-uppright	ejesus@brydenwood.co.uk	2012-01-19T12:27:24	box-uppright	Component	Generic Int DD:1810 x 2110mm:1810 x 2110mm:211798	0	0	0	3cBcy7GEj	0	0	0
Generic Int D Cell Door:790 x 2110mm 3:790 x 2110mm 3:211814 box-lowerleft	ejesus@brydenwood.co.uk	2012-01-19T12:27:24	box-lowerleft	Component	Generic Int D Cell Door:790 x 2110mm 3:790 x 2110mm	0	0	0	3cBcy7GEj	0	0	0
Generic Int D Cell Door:790 x 2110mm 3:790 x 2110mm 3:211814 box-uppright	ejesus@brydenwood.co.uk	2012-01-19T12:27:24	box-uppright	Component	Generic Int D Cell Door:790 x 2110mm 3:790 x 2110mm	0	0	0	3cBcy7GEj	0	0	0
Generic Int D Cell Door:790 x 2110mm 3:790 x 2110mm 3:211815 box-lowerleft	ejesus@brydenwood.co.uk	2012-01-19T12:27:24	box-lowerleft	Component	Generic Int D Cell Door:790 x 2110mm 3:790 x 2110mm	0	44	0	3cBcy7GEj	0	0	0
Generic Int D Cell Door:790 x 2110mm 3:790 x 2110mm 3:211815 box-uppright	ejesus@brydenwood.co.uk	2012-01-19T12:27:24	box-uppright	Component	Generic Int D Cell Door:790 x 2110mm 3:790 x 2110mm	0	44	0	3cBcy7GEj	0	0	0
Plumbing SVP 1:Plumbing SVP 1:Plumbing SVP 1:211824 box-lowerleft	ejesus@brydenwood.co.uk	2012-01-19T12:27:24	box-lowerleft	Component	Plumbing SVP 1:Plumbing SVP 1:Plumbing SVP 1:211824	-7014.49	141.1241	0	3cBcy7GEj	0	0	0
Plumbing SVP 1:Plumbing SVP 1:Plumbing SVP 1:211824 box-uppright	ejesus@brydenwood.co.uk	2012-01-19T12:27:24	box-uppright	Component	Plumbing SVP 1:Plumbing SVP 1:Plumbing SVP 1:211824	-7014.49	141.1241	0	3cBcy7GEj	0	0	0
WC Pan:510 x 510mm:510 x 510mm:211788 box-lowerleft	ejesus@brydenwood.co.uk	2012-01-19T12:27:24	box-lowerleft	Component	WC Pan:510 x 510mm:510 x 510mm:211788	-7614.3	399.663	0	3cBcy7GEj	0	0	0
WC Pan:510 x 510mm:510 x 510mm:211788 box-uppright	ejesus@brydenwood.co.uk	2012-01-19T12:27:24	box-uppright	Component	WC Pan:510 x 510mm:510 x 510mm:211788	-7614.3	399.663	0	3cBcy7GEj	0	0	0
Wallgate ALS80 Basin:470w x 300d:470w x 300d:211813 box-lowerleft	ejesus@brydenwood.co.uk	2012-01-19T12:27:24	box-lowerleft	Component	Wallgate ALS80 Basin:470w x 300d:470w x 300d:211813	-8182.78	319.0112	0	3cBcy7GEj	0	0	0
Wallgate ALS80 Basin:470w x 300d:470w x 300d:211813 box-uppright	ejesus@brydenwood.co.uk	2012-01-19T12:27:24	box-uppright	Component	Wallgate ALS80 Basin:470w x 300d:470w x 300d:211813	-8182.78	319.0112	0	3cBcy7GEj	0	0	0
WC Pan:510 x 510mm 2:510 x 510mm 2:211807 box-lowerleft	ejesus@brydenwood.co.uk	2012-01-19T12:27:24	box-lowerleft	Component	WC Pan:510 x 510mm 2:510 x 510mm 2:211807	-6893.97	399.663	0	3cBcy7GEj	0	0	0
WC Pan:510 x 510mm 2:510 x 510mm 2:211807 box-uppright	ejesus@brydenwood.co.uk	2012-01-19T12:27:24	box-uppright	Component	WC Pan:510 x 510mm 2:510 x 510mm 2:211807	-6893.97	399.663	0	3cBcy7GEj	0	0	0
Wallgate ALS80 Basin:470w x 300d:470w x 300d:211808 box-lowerleft	ejesus@brydenwood.co.uk	2012-01-19T12:27:24	box-lowerleft	Component	Wallgate ALS80 Basin:470w x 300d:470w x 300d:211808	-6231	319.0112	0	3cBcy7GEj	0	0	0
Wallgate ALS80 Basin:470w x 300d:470w x 300d:211808 box-uppright	ejesus@brydenwood.co.uk	2012-01-19T12:27:24	box-uppright	Component	Wallgate ALS80 Basin:470w x 300d:470w x 300d:211808	-6231	319.0112	0	3cBcy7GEj	0	0	0
Cell Bed family:Cell Bed family:Cell Bed family:211786 box-lowerleft	ejesus@brydenwood.co.uk	2012-01-19T12:27:24	box-lowerleft	Component	Cell Bed family:Cell Bed family:Cell Bed family:211786	-9164.49	1700.013	0	3cBcy7GEj	0	0	0
Cell Bed family:Cell Bed family:Cell Bed family:211786 box-uppright	ejesus@brydenwood.co.uk	2012-01-19T12:27:24	box-uppright	Component	Cell Bed family:Cell Bed family:Cell Bed family:211786	-9164.49	1700.013	0	3cBcy7GEj	0	0	0
Cell Desk:Desk Whitewood:Desk Whitewood:211787 box-lowerleft	ejesus@brydenwood.co.uk	2012-01-19T12:27:24	box-lowerleft	Component	Cell Desk:Desk Whitewood:Desk Whitewood:211787	-7021.7	2416.152	0	3cBcy7GEj	0	0	0
Cell Desk:Desk Whitewood:Desk Whitewood:211787 box-uppright	ejesus@brydenwood.co.uk	2012-01-19T12:27:24	box-uppright	Component	Cell Desk:Desk Whitewood:Desk Whitewood:211787	-7021.7	2416.152	0	3cBcy7GEj	0	0	0
Cell Locker:Cell Locker:Cell Locker:211789 box-lowerleft	ejesus@brydenwood.co.uk	2012-01-19T12:27:24	box-lowerleft	Component	Cell Locker:Cell Locker:Cell Locker:211789	-7471.7	2441.072	0	3cBcy7GEj	0	0	0
Cell Locker:Cell Locker:Cell Locker:211789 box-uppright	ejesus@brydenwood.co.uk	2012-01-19T12:27:24	box-uppright	Component	Cell Locker:Cell Locker:Cell Locker:211789	-7471.7	2441.072	0	3cBcy7GEj	0	0	0
Safer Seat:Safer Seat:Safer Seat:211791 box-lowerleft	ejesus@brydenwood.co.uk	2012-01-19T12:27:24	box-lowerleft	Component	Safer Seat:Safer Seat:Safer Seat:211791	-7440.84	2814.782	-1.59527	3cBcy7GEj	0	0	0

Note: Only an excerpt has been included. The full list of 'Coordinates' for the two cells runs to 88 lines

Issue

Name	CreatedBy	CreatedOn	Type	Risk	Chance	Impact	SheetName1	RowName1	SheetName2	RowName2	Description	Owner	Mitigation	ExtSystem	ExtObject	ExtIdentifier

Note: There are currently no 'Issues' in the model

Picklists

ApprovalBy
AreaUnit
AssetType
Category-Facility
Category-Space
Category-Element
Category-Product
Category-Role
CoordinateSheet
ConnectionType
CoordinateType
DocumentType
DurationUnit
FloorType
IssueCategory
IssueChance
IssueImpact
IssueRisk
JobStatusType
JobType
objAttribute

objAttributeType
objComponent
objConnection
objContact
objCoordinate
objDocument
objFacility
objFloor
objIssue
objJob
objProject
objResource
objSite
objSpace
objSpare
objSystem
objType
objWarranty
objZone
ResourceType
SheetType

SpareType
StageType
ZoneType
LinearUnit
VolumeUnit
CostUnit
AssemblyType
ImpactType
ImpactStage
ImpactUnit
objAssembly
objImpact
AttributeUnit
Category-Phase

Note: There are 'Pick lists' for the items above