

# Create a CADmep 2014 Program Shortcut

## Autodesk CADmep 2014

Autodesk CADmep 2014 does not seem to create a shortcut to start the program from the menu or from the desktop.

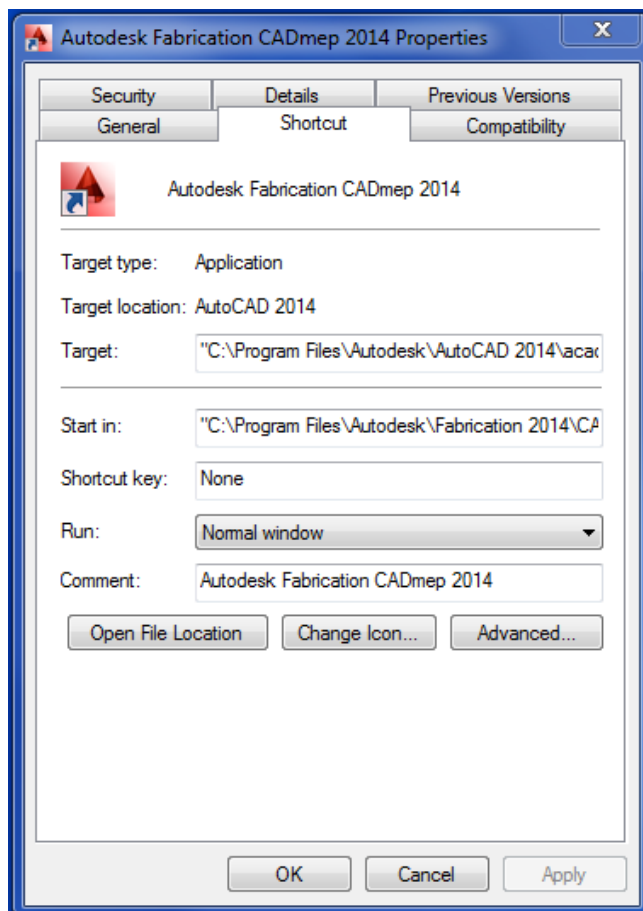
In order to start the program a lot of users will start AutoCAD normally and use the **TAKEOFF** command to load the ARX required. A shortcut can be created with the following command line to launch AutoCAD and do the TAKEOFF load...

```
"C:\Program Files\Autodesk\AutoCAD 2014\acad.exe" /product ACAD /ld "C:\program files\autodesk\fabrication 2014\cadmep\cadmep19_1x64.arx"
```

The `'/product ACAD'` switch ensures that vanilla AutoCAD is started up if you have several different versions installed. For example Plant Design Suite provides an AutoCAD vanilla and an AutoCAD Plant variety. Without this switch CADmep would load up in the last loaded version of AutoCAD.

You may also have to change the paths your installation is in, the above path is the default installed one.

In summary, Right click on your desktop, select **NEW > SHORTCUT ...**



Set the **TARGET** to the above command line ...

You may also like to set the **START IN** folder. The default as shown is ...

```
"C:\Program Files\Autodesk\Fabrication 2014\CADmep\"
```