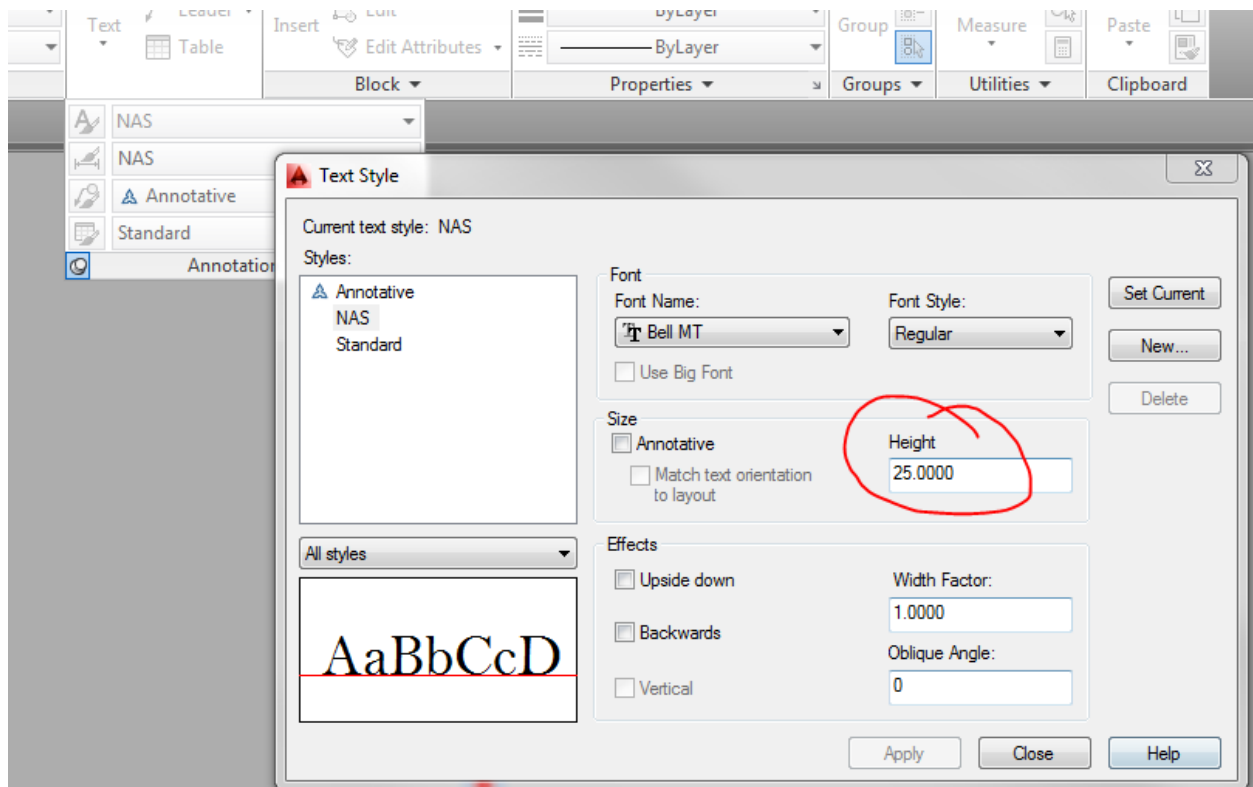


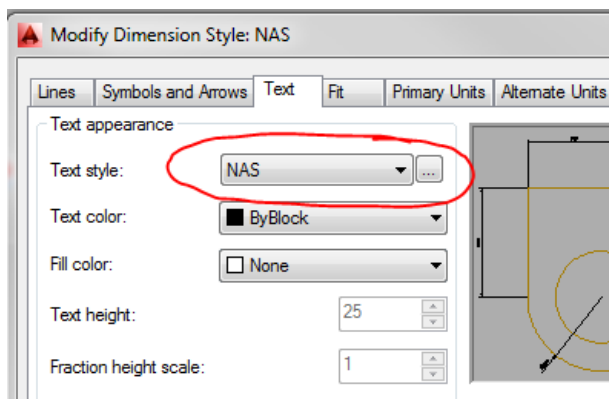
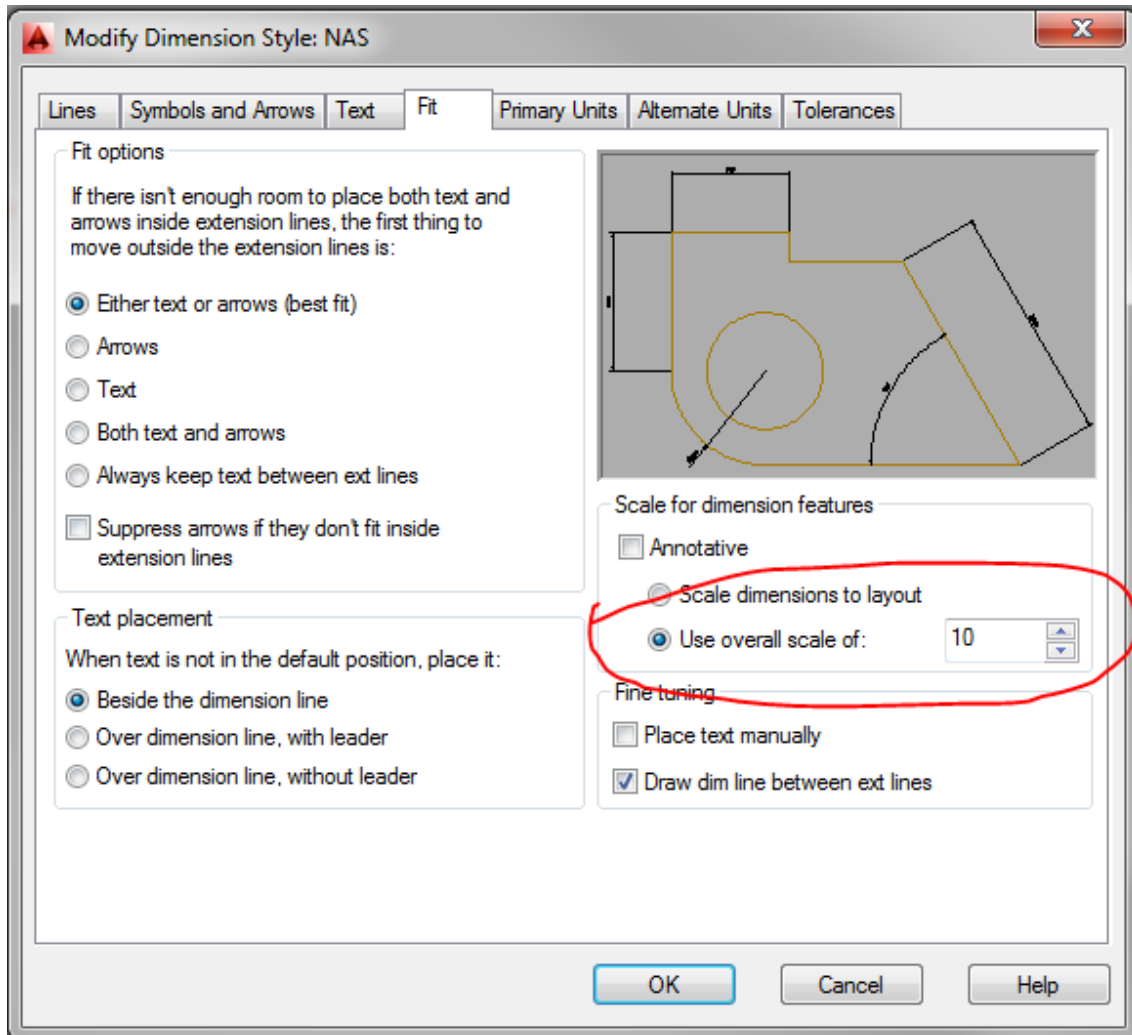
# Annotation Usage in CADmep

## Setup and Use Annotations in Autodesk Fabrication CADmep 2014

Text styles are setup with the **STYLE** command as per normal AutoCAD. As of the 2014 release Annotation Scaling is not implemented so this means you will want to have a Text Height that takes into account your final plotting scale. In my screenshot 2.5mm text will be plotted at 1:10 so the size is 25 ...

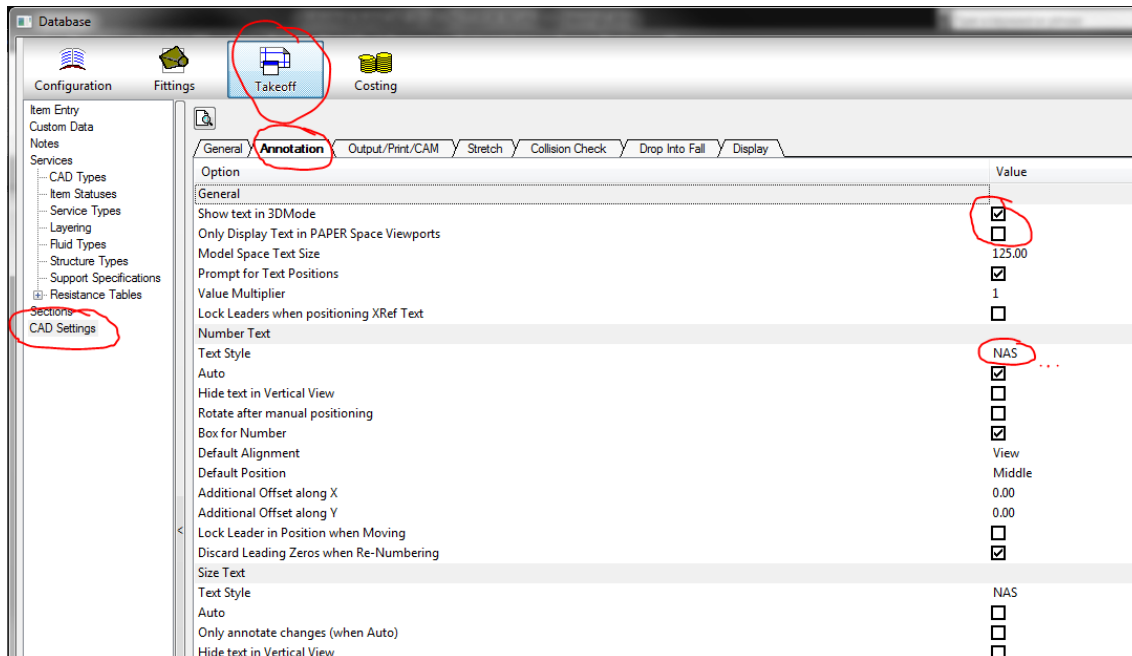


Dimension styles are setup with the **DIMSTY** command, again as per normal AutoCAD. This time I show the 'Overall Scale' setting I'm using for my drawing 1:10. Otherwise all the dimension settings then have plotted sizes for arrow size etc ...



Use the same text style as previously defined...

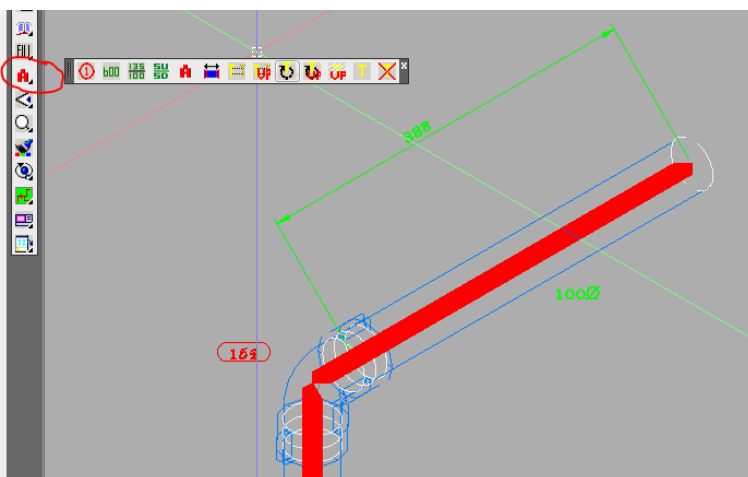
The text placement settings are in **Database > Takeoff > CAD Settings > Annotation ...**



You will need to type the name of your text and dimension styles into the drop down boxes as they don't offer the AutoCAD styles at the moment.

The text in Model Space and / or Paper Space is controlled by the top 2 lines, but take note that 3DMode here means an Iso viewpoint. So if you have Iso viewpoints in your Paper space you will need to have this on.

Don't forget that these are the configuration tools for the common database so if you are going to open these files in ESTmep you will need to co-ordinate the styles you are setting up. Please refer to a separate White Paper for the ESTmep details.



Use the **CADmep Text Utils** toolbar for all your placement and editing tools...