

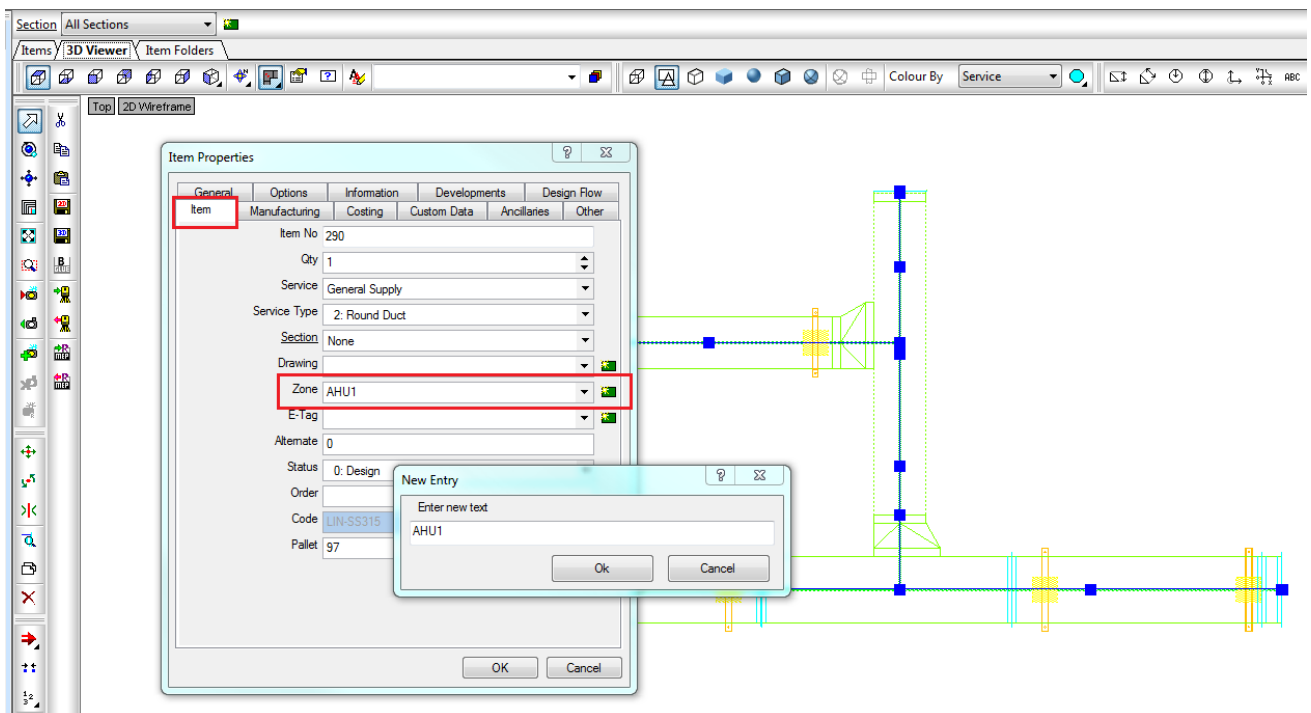
Using the 'Zone' field in Autodesk Fabrication.

Autodesk Fabrication CADmep & ESTmep

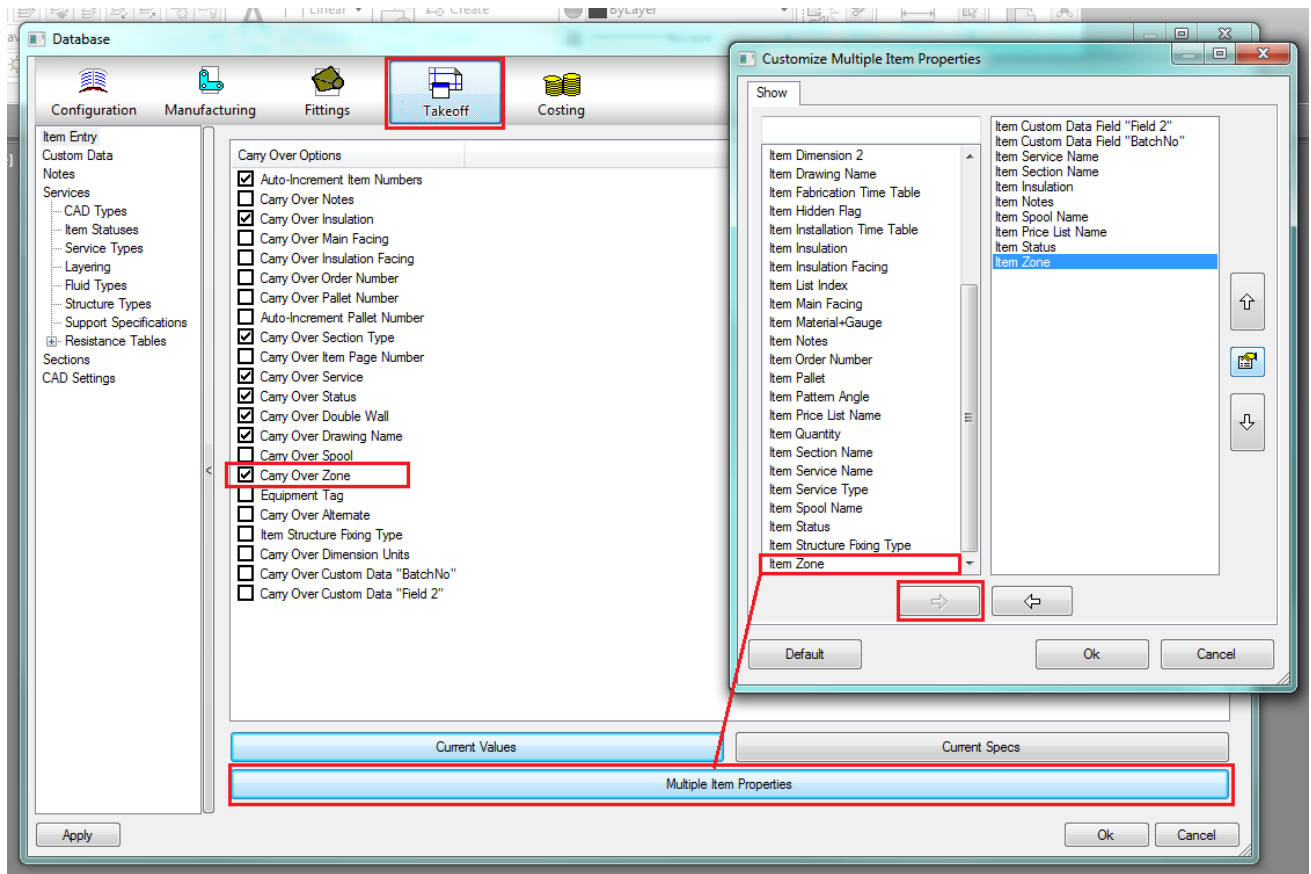
One of the great things about Fabrication products is the range of ways it can be configured to suit your needs.

As an example, here I will show the use of the **ITEM ZONE** field as a way to classify, select and report designed systems with a name referenced from the system AHU. In other words I would like to show all my ductwork associated with 'AHU 1', 'AHU2' etc

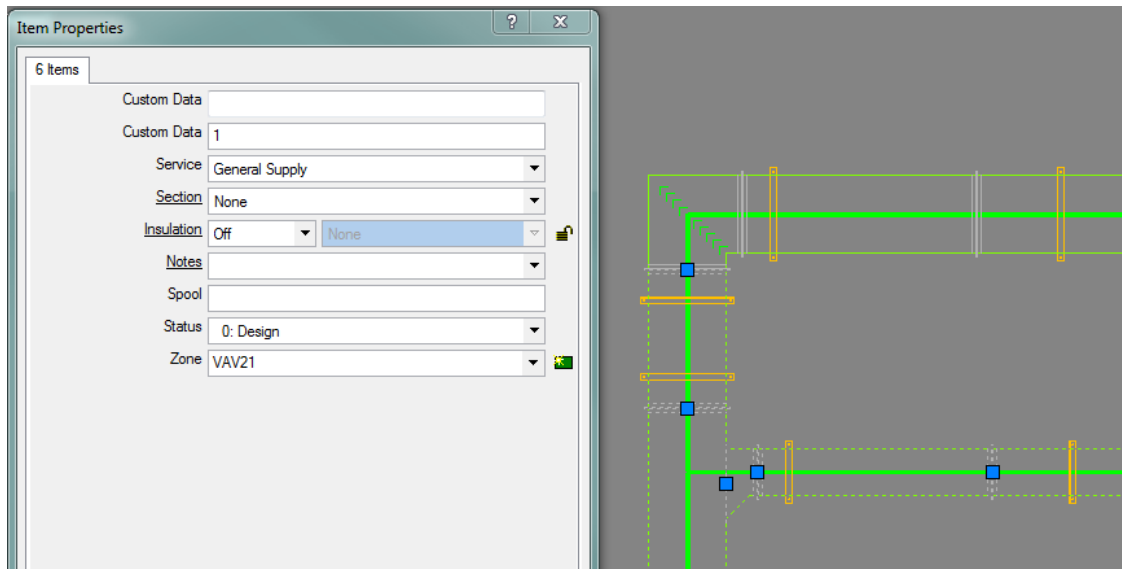
Looking at the Item Properties of a fitting you will find the ZONE field with a button on the right side to set up new values. I am showing the properties of the design line here...



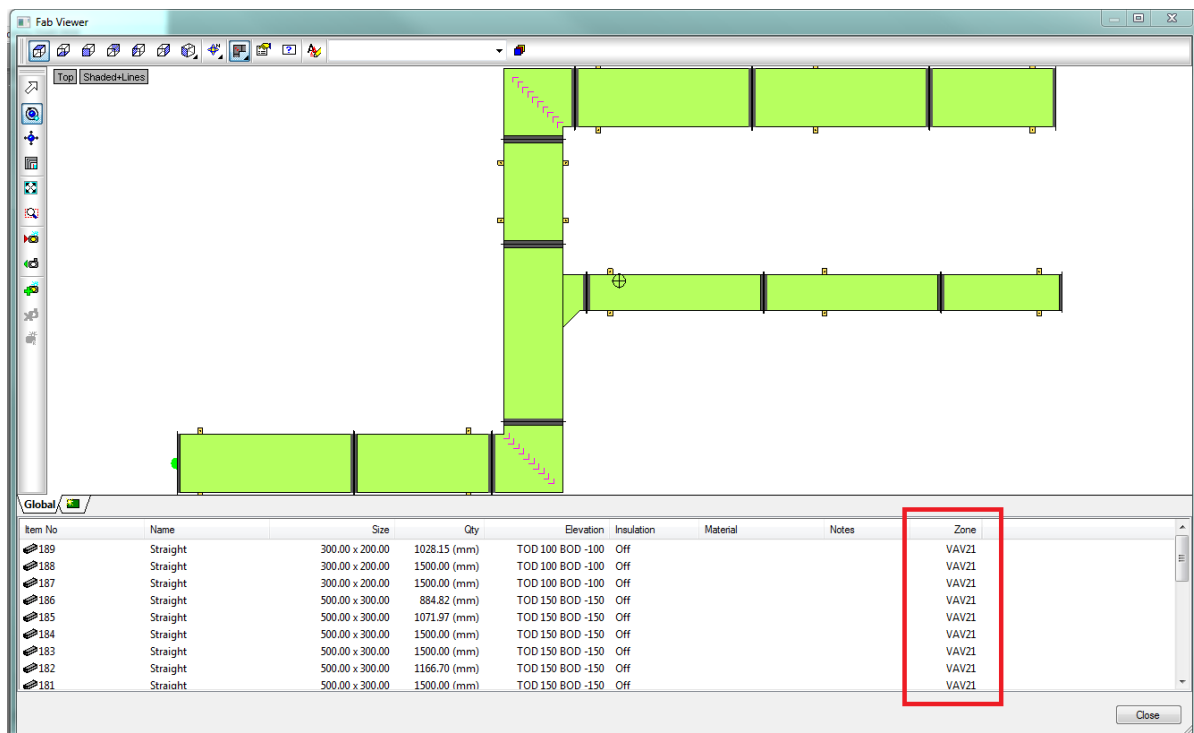
By editing the database **Takeoff** settings you will be able to **CARRY OVER ZONES** and also set the Zones to be available when editing the Properties of Multiple selected items...



Here is a screenshot of multiple selected items in CADmep by using Right Click > CADmep Properties...[Make sure you only have multiple duct blocks to get the CADmep Properties command shown]



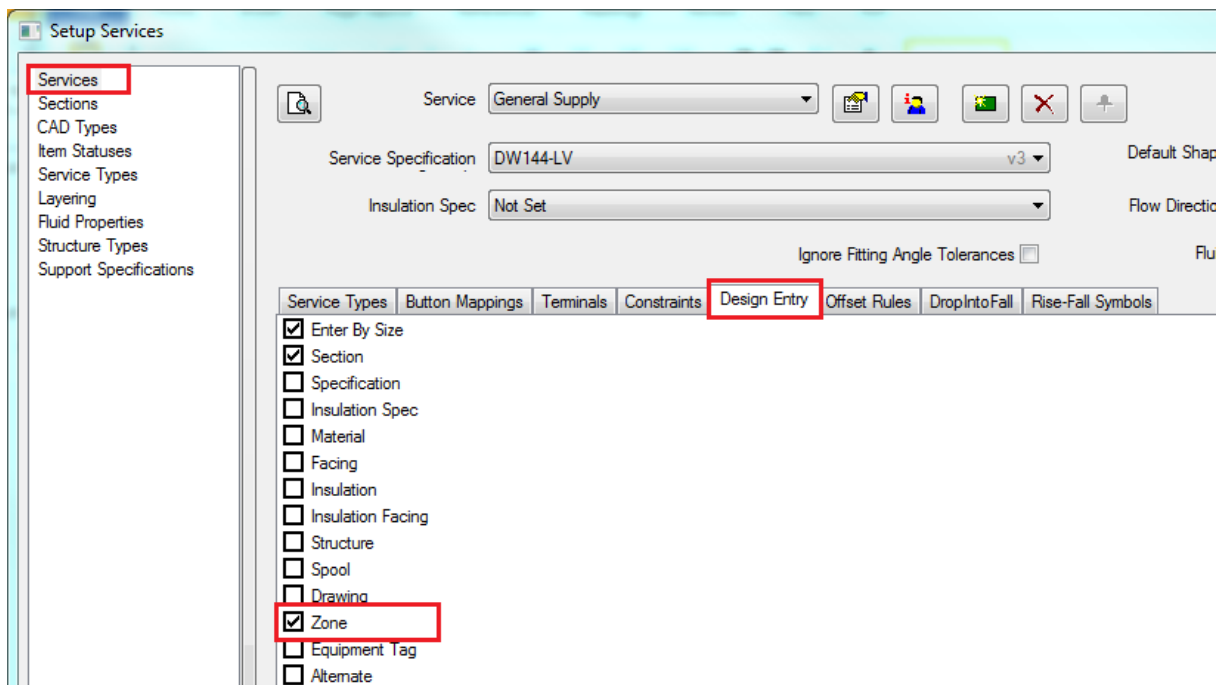
Whilst here is the same idea shown using the **FABVIEWER** command in CADmep. In this instance you will need to Right Click over the far right column and use **Properties** to display the Zone field.



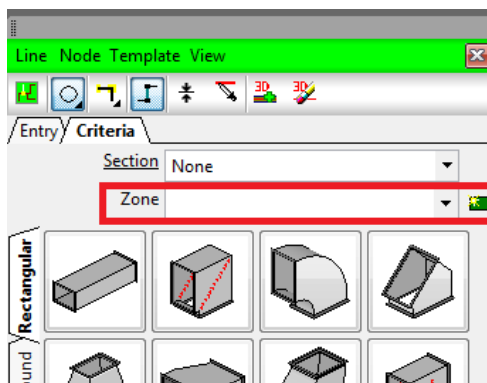
The same thing in ESTmep is directly available in the ITEMS table entry...

Section	Item No	Name	Size	Qty	Material	Weight	Item Area	Duct Area	Insulation Area	Insulation	Material	Notes	Status	Zone
None	311	Straight	400.00 x 200.00	1500.00 (mm)	Galvanised x 0.60	7.06	1.76	1.76	0.00	Off			Design	AHU2
None	312	Square to Round (Offs...	400.00 x 200.00	1	None	0.00	0.24	0.24	0.00	Off			Design	AHU2
None	313	End Cap Tube (ESU)	315	1	Galvanised (Lindab) x 0.60	0.00	0.08	0.08	0.00	Off			Design	AHU2
None	314	Rectangular Bearer	400.00 x 200.00	1	Galvanised x 0.60	0.00	0.00	0.00	0.00	Off			Design	AHU2
None	315	Rectangular Bearer	400.00 x 200.00	1	Galvanised x 0.60	0.00	0.00	0.00	0.00	Off			Design	AHU2
None	316	Split Ring	315.00	1	Galvanised	0.00	0.00	0.00	0.00	Off			Design	AHU4
None	317	Split Ring	315.00	1	Galvanised	0.00	0.00	0.00	0.00	Off			Design	AHU4
None	317	Straight	400.00 x 200.00	1500.00 (mm)	Galvanised x 0.60	7.34	1.85	1.85	0.00	Off			Design	AHU4
None	318	Straight	400.00 x 200.00	1500.00 (mm)	Galvanised x 0.60	7.34	1.73	1.73	0.00	Off			Design	AHU4

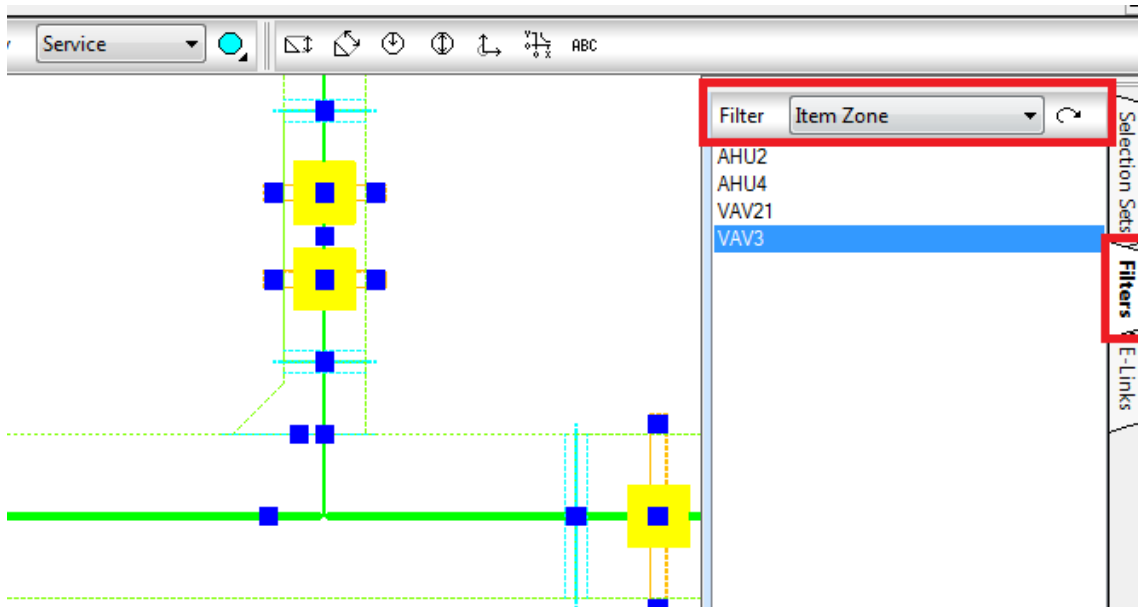
By setting up the **Service > Design Entry** options in either CADmep or ESTmep...



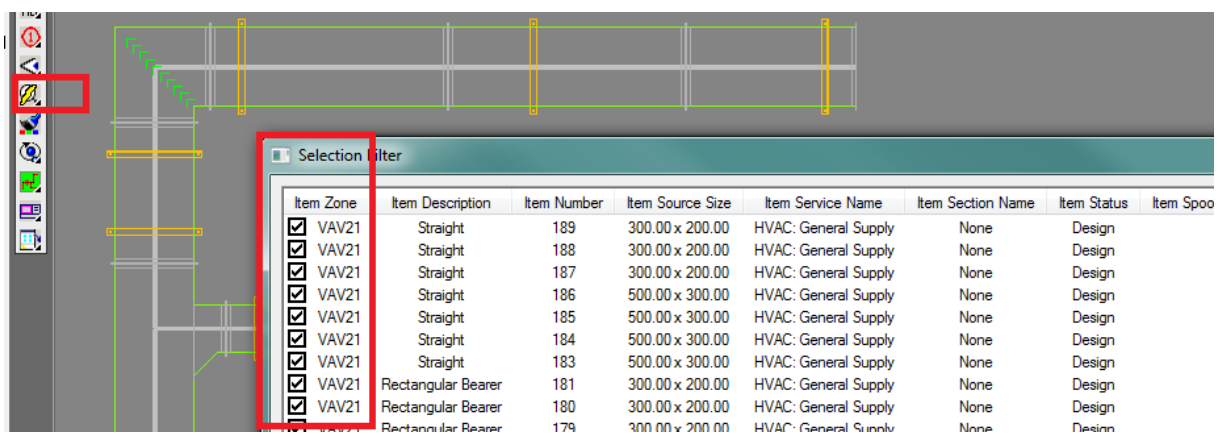
You will be able to enter the zone at Design Line creation in the first place...



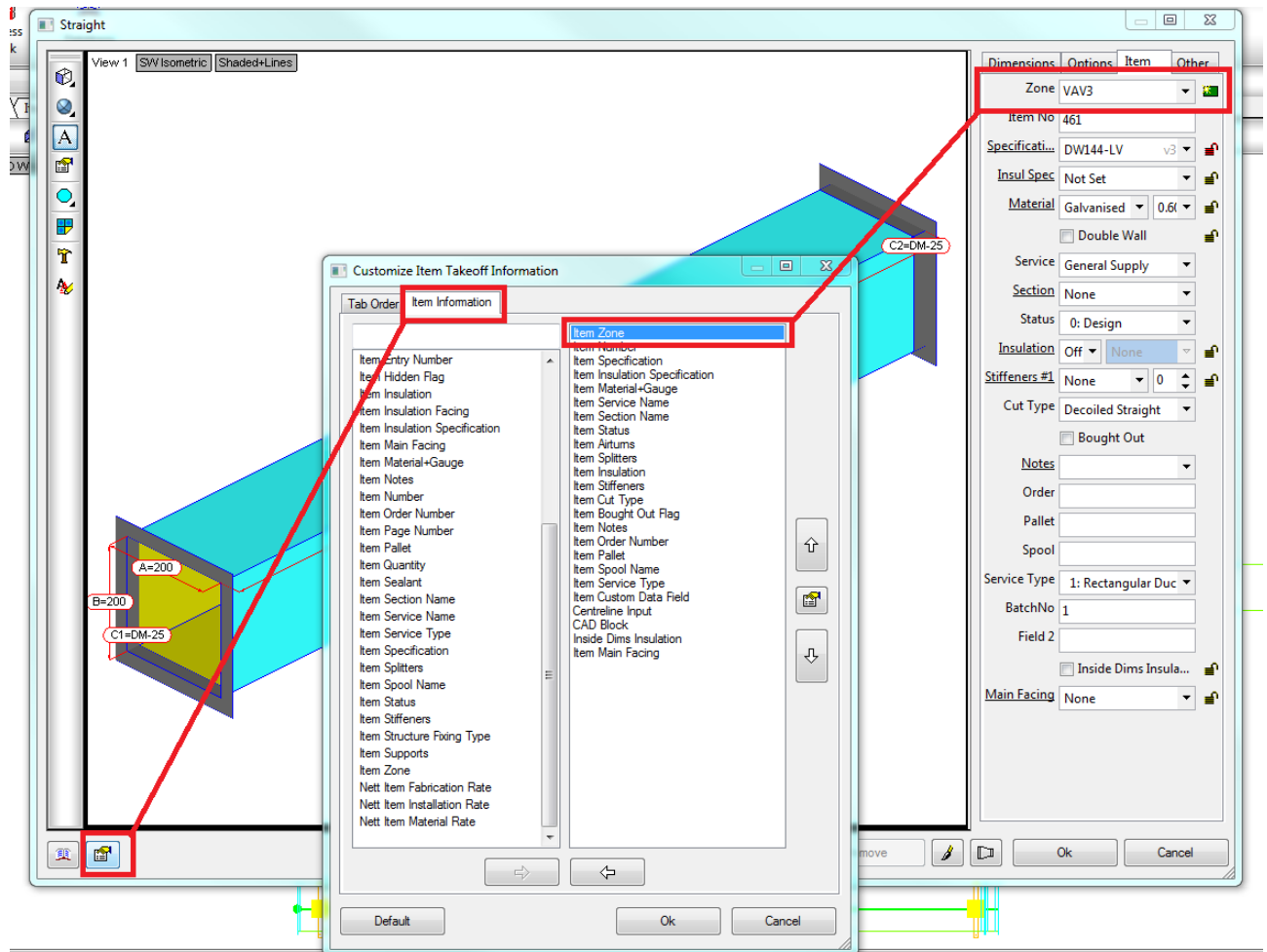
In ESTmep you can use the **Filters** function to select items by the Zone – double click the zone name to select them on the screen...



In CADmep use the **SELECTFILTER** command or use the icon from the toolbar to filter a selection for the Zoned items you want.



When using the attacher method in either package or taking things off by button codes in ESTmep then you will want to config the Item Zone field to be visible here as well...



Lastly, of course you can use the **Item Zone** field in your reports as normal. Here's a example of the Bill of Materials report showing the Zone added as the first column...

Bill of Materials - Duct

Ref:

Contract Name: Untitled2

Date: 18

Straights

Zone	Description	Size (mm)	Total Length (m)	Weight (kg)	Qty
VAV21	Straight	500x300	9.12 (m)	106.3	7
VAV21	Straight	300x200	4.03 (m)	24.57	3