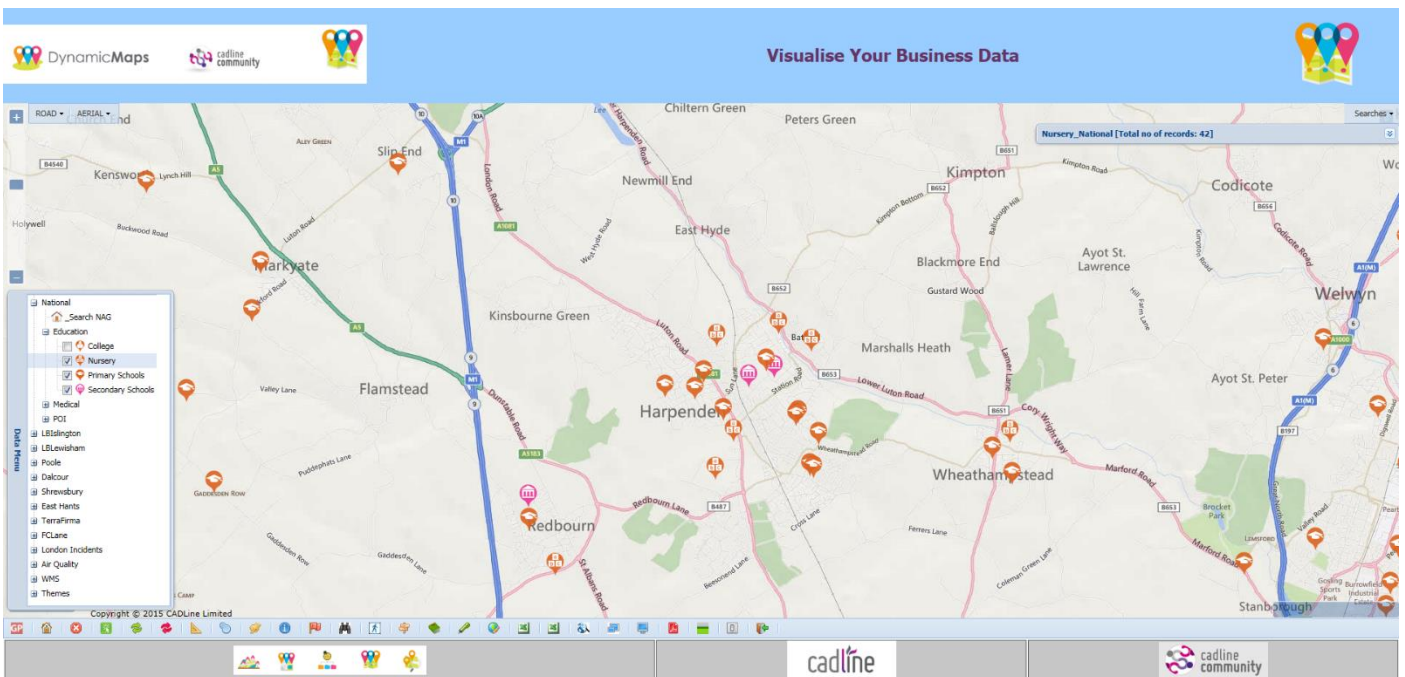


MapThat Admin Forms – Grouping Layers

The ability to group individual layers allows you to de-clutter and enhance the usability of MapThat. For example secondary, primary and nursery school layers can be combined under one Parent layer called Education.



Grouping layers is based on a 'Parent to Child' database relationship, which can be configured within the MapThat Admin Forms. In the example below using the **Layer Trees** tab we have set the layer Secondary Schools to be the Child of the Education layer.

Layer Metadata		Role Layers	Search Params	Layer Trees
<input type="checkbox"/> Tree		Sort Order	Parent	Include <input type="checkbox"/>
<input type="checkbox"/> National		2	Education	<input checked="" type="checkbox"/>

If you need to create a new group or parent layer, then simply choose to add a new layer in the MapThat Admin forms which doesn't actually open any data, but will act as a Parent to a number of Child layers. In the example below, I have created a layer called Hospital Layers, which doesn't have an **On/Off Box**, doesn't have an **SQL** to select data, and has no options for **displaying icons**.

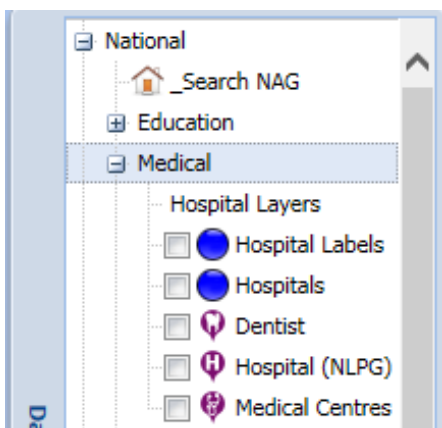
The screenshot shows the 'EDIT LAYER' form for a layer named 'Hospital Layers'. The form includes the following fields and options:

- Layer Caption:** Hospital Layers
- Layer Type:** DataPoint
- Sort Order Code:** N2
- Display Priority:** 50
- Zoom On:** 2
- Opacity:** 90
- Zoom Off:** 24
- On/Off Box:**
- Opacity Slider:**
- Display Startup:**
- Show Branch:**
- Layer SQL:** (Empty text area)
- Unique ID Fields:** ID
- Database:** ** Please Select **
- Record Count:** (Empty)
- Show Record Count:**
- Theme:** ** Please Select **
- Info. Bubble:** ** Please Select **
- Layer Icon 1:** ** Please Select **
- Layer Icon 2:** ** Please Select **
- Map Icon:** ** Please Select **
- Map Highlight Icon:** ** Please Select **
- Long/Easting Column:** LONGITUDE
- Lat/Northing Column:** LATITUDE
- OS Data Source:**
- SRID:** 4326

In the **Layer Trees** tab, set the **Tree** to be National and the **Parent** to be Medical.

The screenshot shows the configuration for the 'Layer Trees' tab. It consists of a table with four columns:

<input type="checkbox"/>	National	1	Medical	<input checked="" type="checkbox"/>
--------------------------	----------	---	---------	-------------------------------------

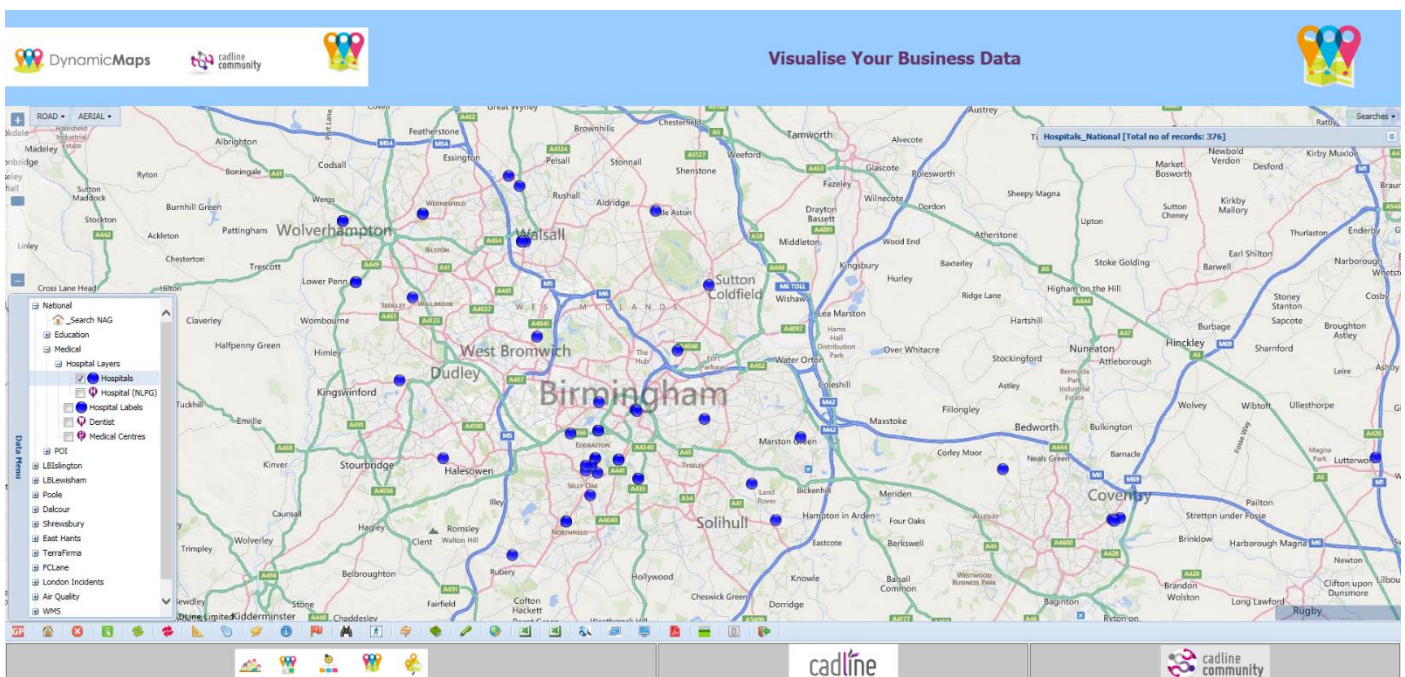


The result will be a new layer called Hospital Layers which can be used to group other similar layers, such as the Hospitals and Hospitals (NLPG).

The next step will be to move the individual layers to now be children of the Hospital Layers group. Open each layer one by one in the MapThat Admin Forms and change the **Parent** of each to now be Hospital Layers.

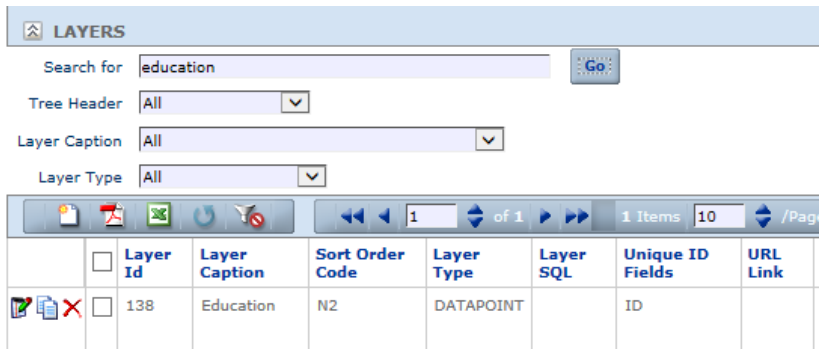
<input type="checkbox"/>	National	3	Hospital Layers	<input checked="" type="checkbox"/>
--------------------------	----------	---	-----------------	-------------------------------------

Once you have changed the Parent of each of the sub layers, refresh MapThat and the layers will now be grouped under the Hospital Layers group.

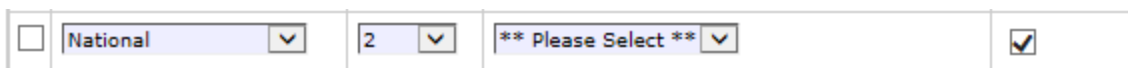


These changes can be made layer by layer or if all of your map layers are already set in a group, for example the Education group, then by changing the Parent of the Education layer all of the Child layers will automatically be moved – as they will still be Children of the Education layer.

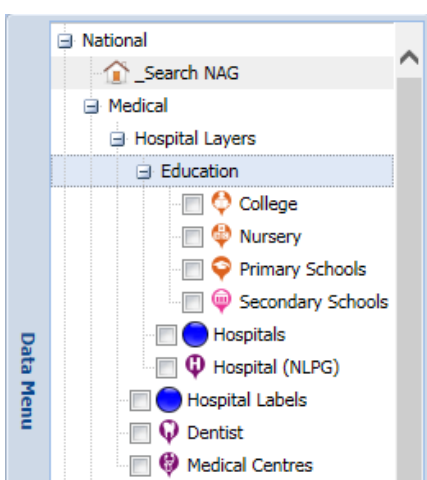
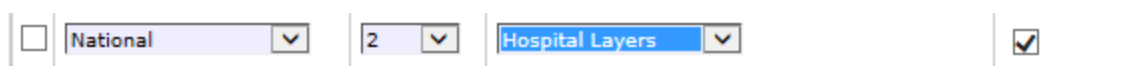
Search for the Education layer within the MapThat Admin Forms, by typing the word Education and pressing **Go**.



In the **Layer Trees** tab the Education layer has been set to display under the National Tree, but it currently has no **Parent**.



From the **Parent** drop down list choose where you wish to move the Education layer to. In this example and just to demonstrate the functionality we will choose the new Hospital Layers group I created earlier.



The Education layer and all of its Child layers are now listed underneath the Hospital Layers group. This method allows you to move and reassign a group of individual layers to any new Parent layer.