

Excel Loader Tool

Excel Loader

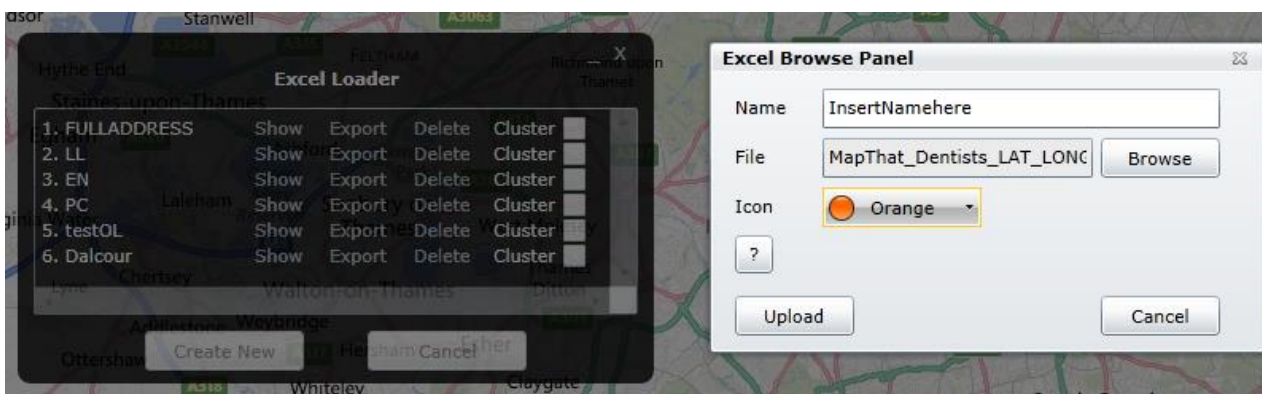
Activate the tool and click 'Create New' to open the Excel Browse Panel:

Name: Insert a name to identify the new layer of information.

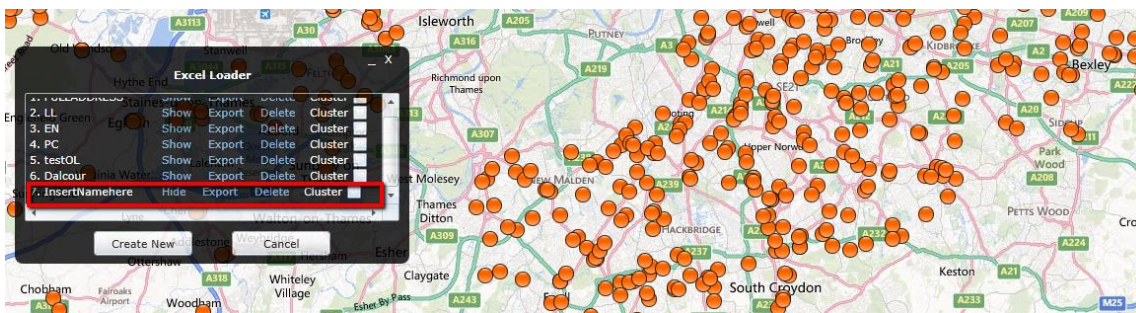
File: Browse to the xls file you pretend to add.

Icon: Choose an Icon from the drop down list.


Upload: Click 'Upload' to load the information from the excel file.

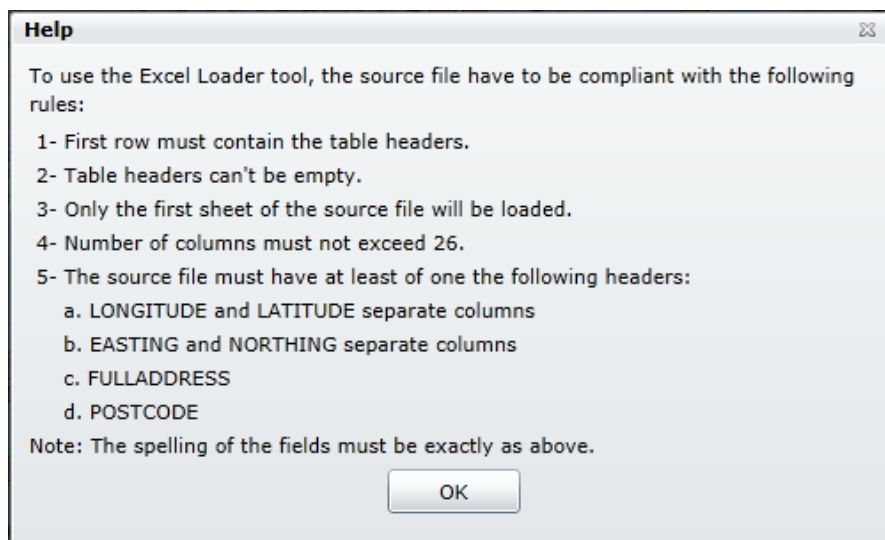


The information from the excel file is automatically saved and loaded to the map.



If the system is unable to geocode records, will prompt the user to save the excel file and will add a column indicating which record was not geocode.

The help button  provides the necessary information about the requirements needed to use this tool.



For the existing saved layers, users can:

Hyde/Show: Turn on/off the layer.

Export: Export records back to excel with Latitude and Longitude columns

Delete: Eliminate the layer

Cluster: cluster the records in the map to improve visualization. Users can roll over the icons to visualize the area that contain a certain cluster. The number in the pushpin icons is the number of records clustered.

