

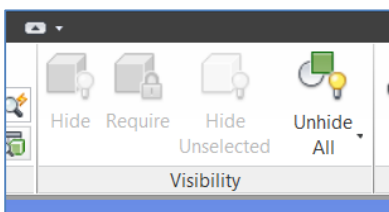
# Navisworks 2015 – Visibility Tools

## How to use the Hide, Require, Hide Unselected and Unhide All commands in Navisworks

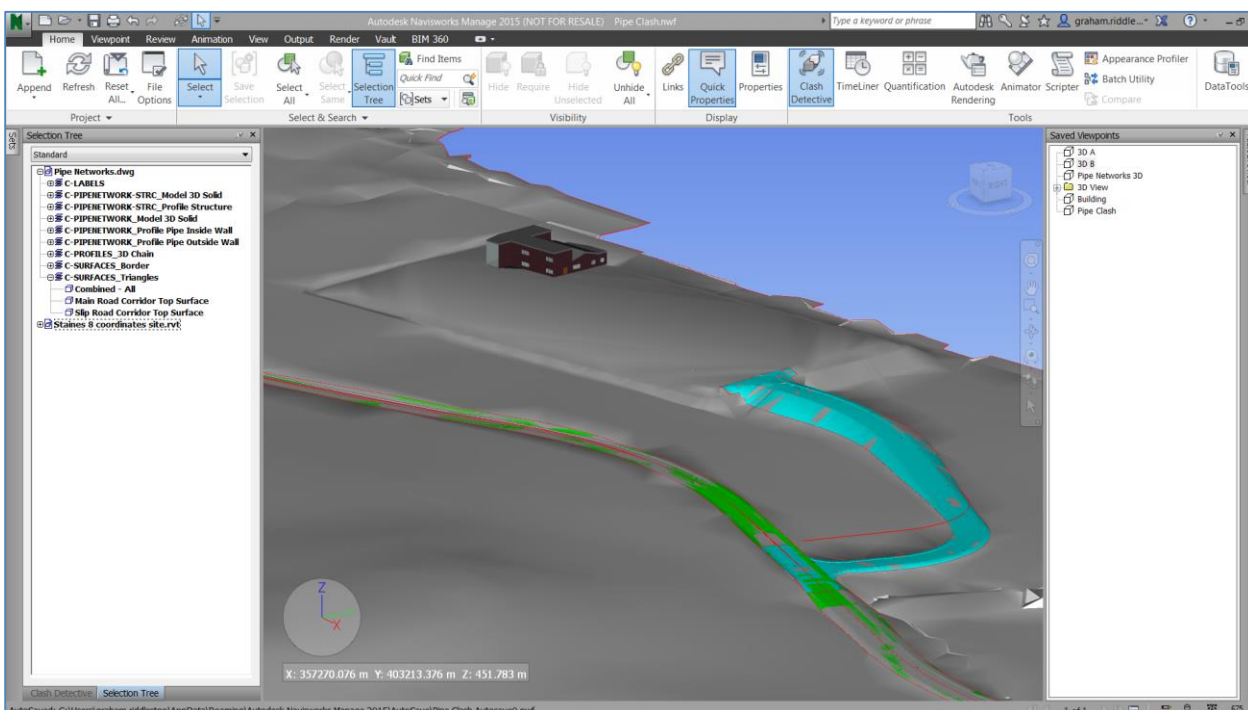
### Introduction

One of the fundamental features in Navisworks is the ability to easily control which model objects are visible at any one time. This white paper explains the techniques available for displaying and hiding those objects

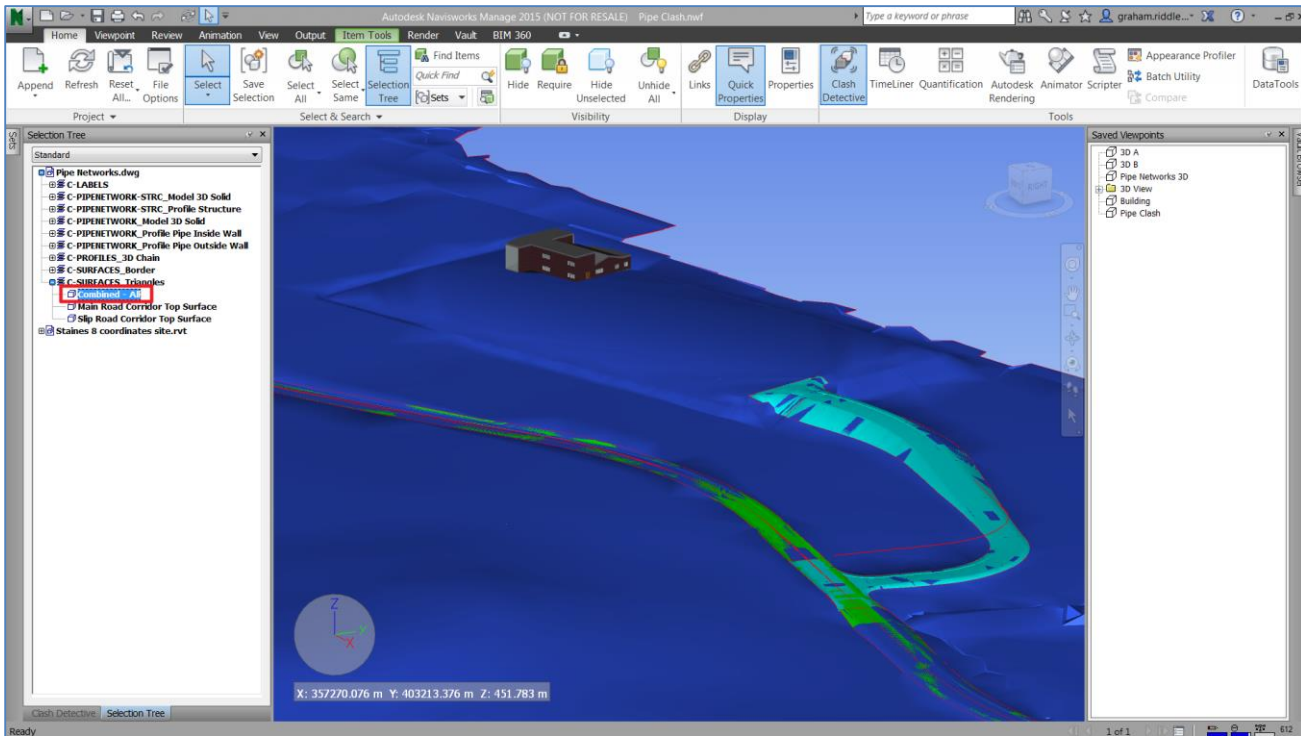
On the Home tab of Navisworks you will see the Visibility menu:



The model below shows a combination of Civil 3D and Revit data including a main road, side road, civil surfaces, pipe networks and a building designed in Revit.



Once an object is selected, the Hide, Require and Hide Unselected buttons become active. In this case the surface named 'Combined All' is selected. This selection is also displayed in the Selection Tree (shown on the left)



## Hide Objects

Selecting the Hide button will hide only the selected object. You can also use the right mouse button menu > Hide or use Ctrl H to hide objects.

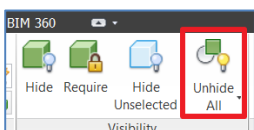
Several objects can be selected for hiding at once by making an initial selection (either by picking the graphics area or from the selection tree) then holding the Ctrl key down and making other selections.

## Showing Hidden Objects

Hidden objects can be redisplayed by selecting the objects from the Selection Tree and picking the Hide button again. Alternatively, after selecting the objects use Right Mouse button and untick Hide.

## Unhide All Hidden Objects

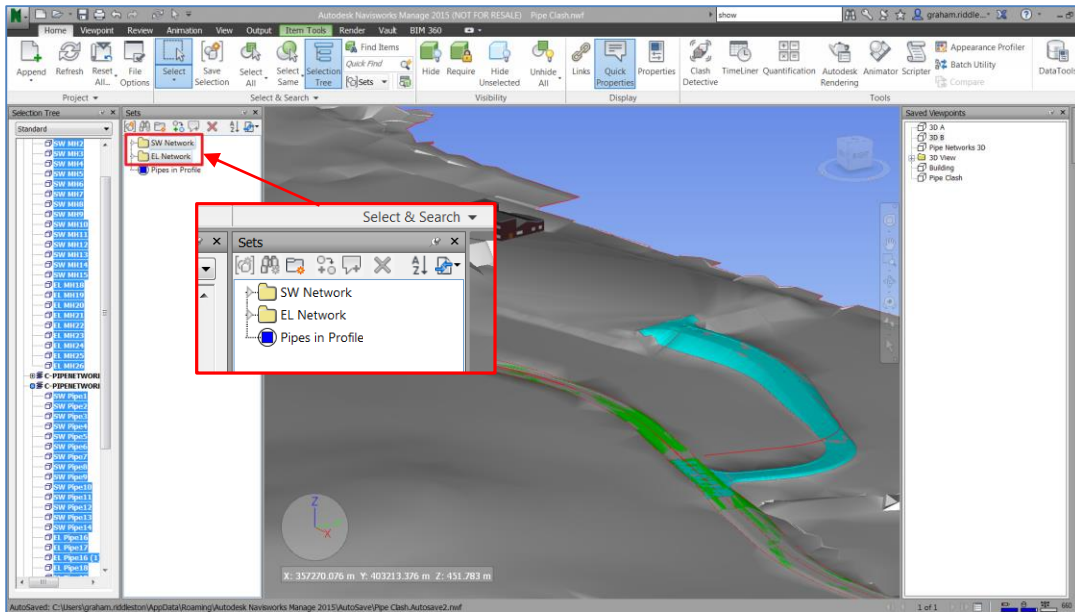
To unhide all hidden objects select the Unhide All Button



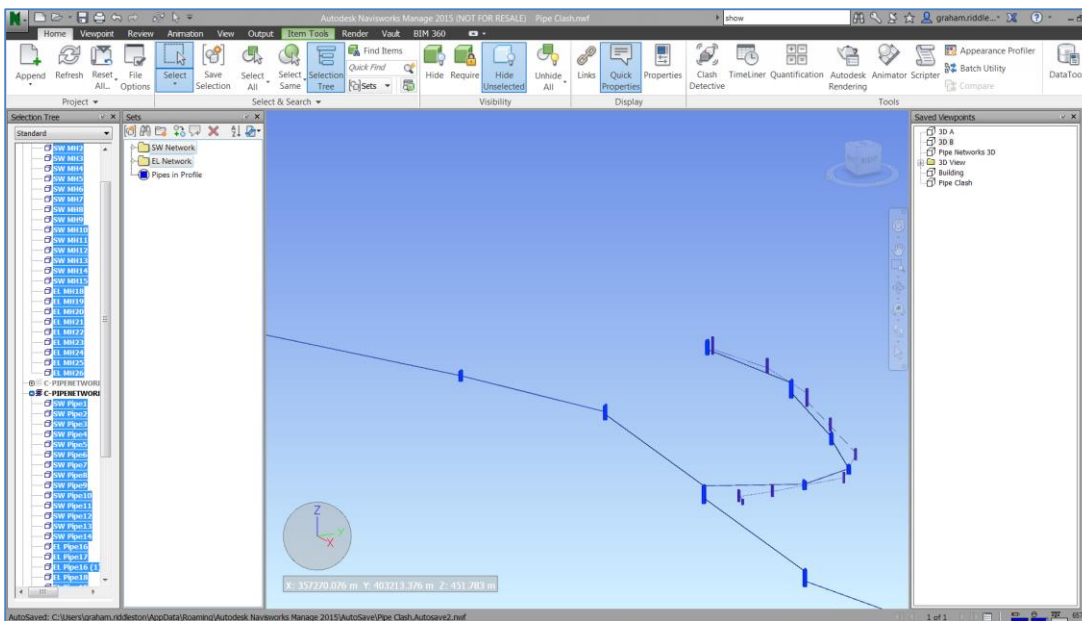
## Hide Unselected Button

This feature allows you to select specific objects to display and quickly hide everything else.

In the example below a Selection Set\* has been created to group together all Surface Water network objects (SW Network) and another selection set is used for all Electricity network objects (EL Network). The two Selection Sets have then been selected.



Selecting 'Hide Unselected' will hide everything except the electricity and surface water networks. See below:



\* Selection Sets will be explained fully in a subsequent White Paper



## Require Command

The Require command is an advanced option that ensures selected objects will remain visible during the Navisworks navigation process

The best description of the process can be found in the Navisworks help files as follows:

*Although Autodesk Navisworks intelligently prioritizes objects for culling in the scene, sometimes it drops out geometry that needs to remain visible while navigating. You can make sure the objects are always rendered during interactive navigation by making them required*

Objects set as 'Required' will be displayed in red in the Selection Tree

