

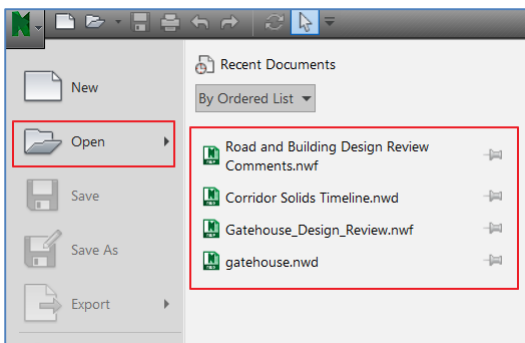
# Navisworks 2016 – Difference between Append and Merge commands

## Introduction

When opening files in Navisworks there is often confusion as to when the Append or Merge command should be used. This White Paper will explain the different uses.

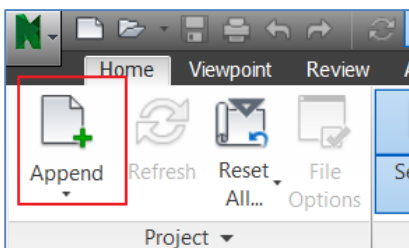
## Open

The AutoCAD Open and Recent Documents list is available in Navisworks just as in any other AutoCAD application:



## Append

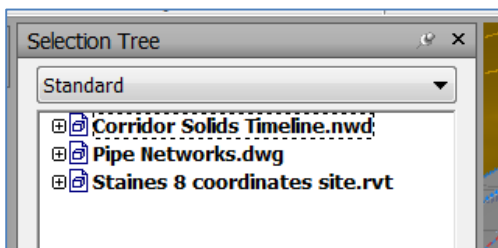
An alternative way to open the first drawing in Navisworks is to select the Append command from the Project menu. This will display an Open dialogue where the desired file can be selected:



The selected file will be displayed in the Navisworks drawing area and the file name is displayed in the Selection Tree:



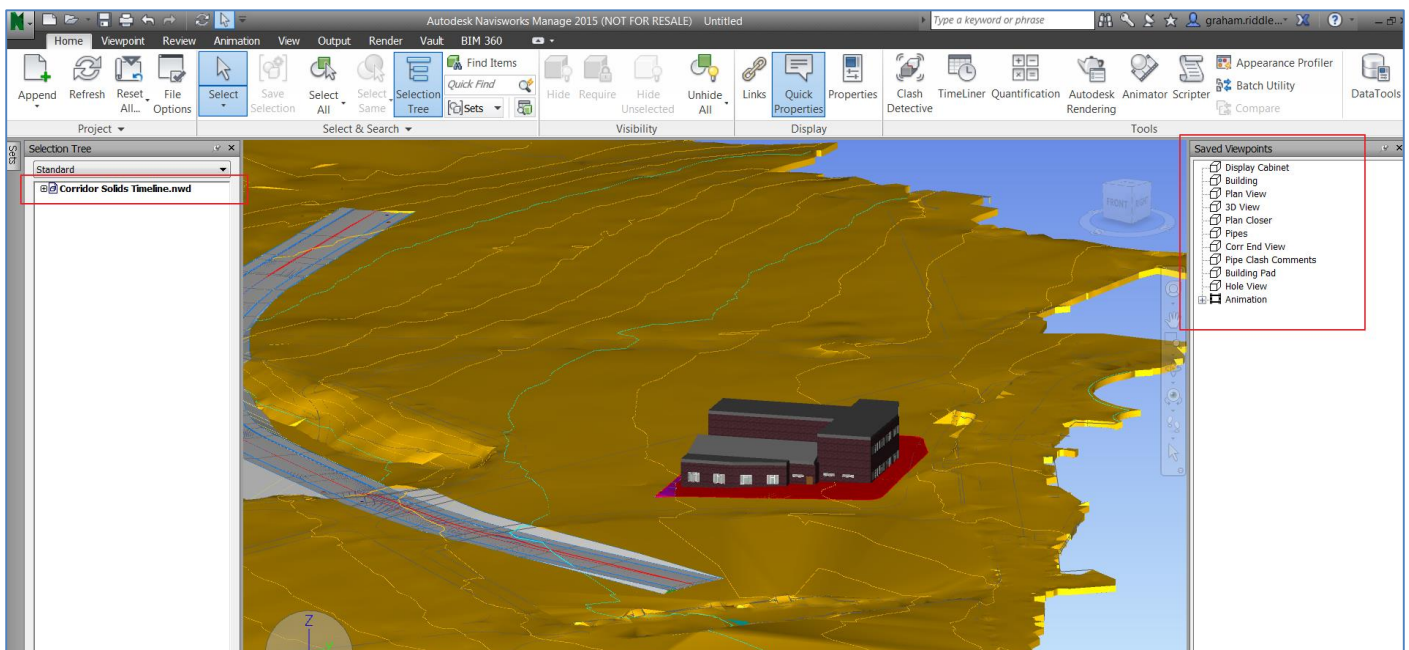
Further design files can be added to a Navisworks session by using the Append button again. In the case below another civil drawing for pipe design has appended along with a building design file from revit.



## Merge

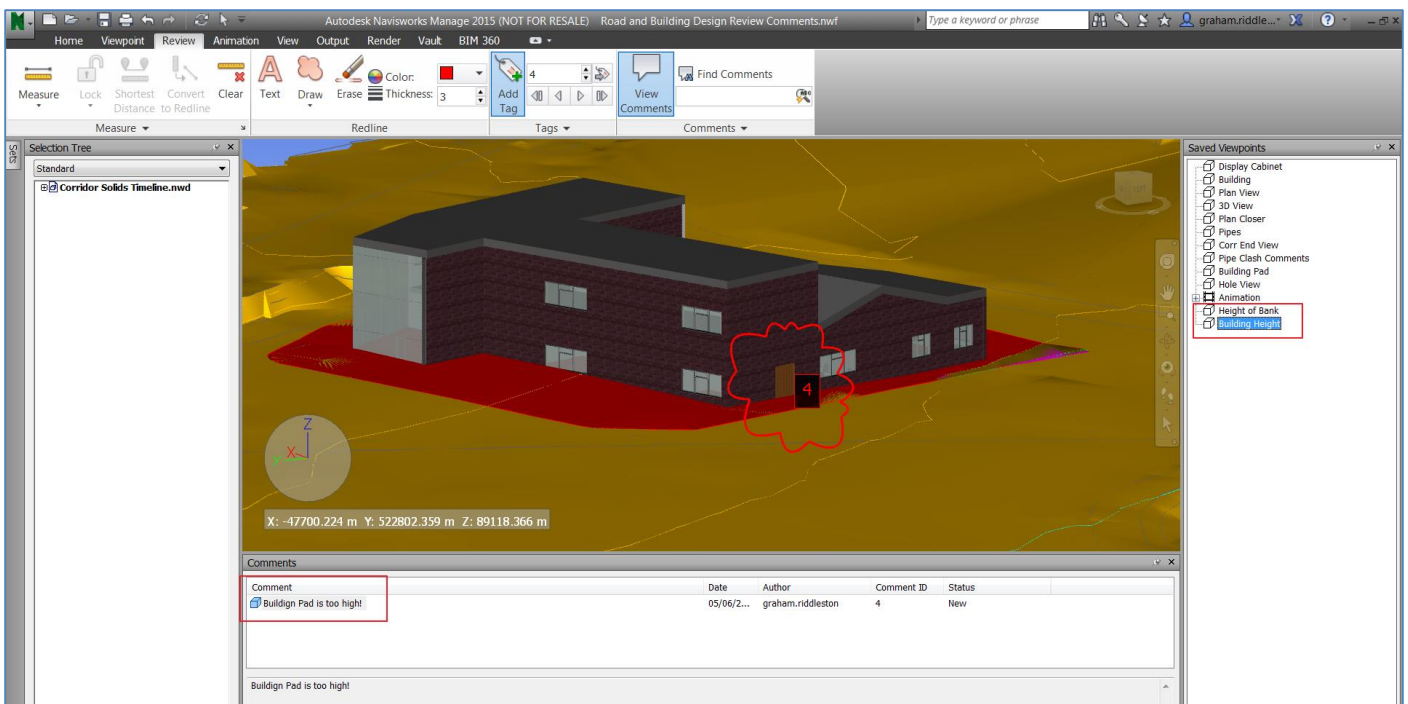
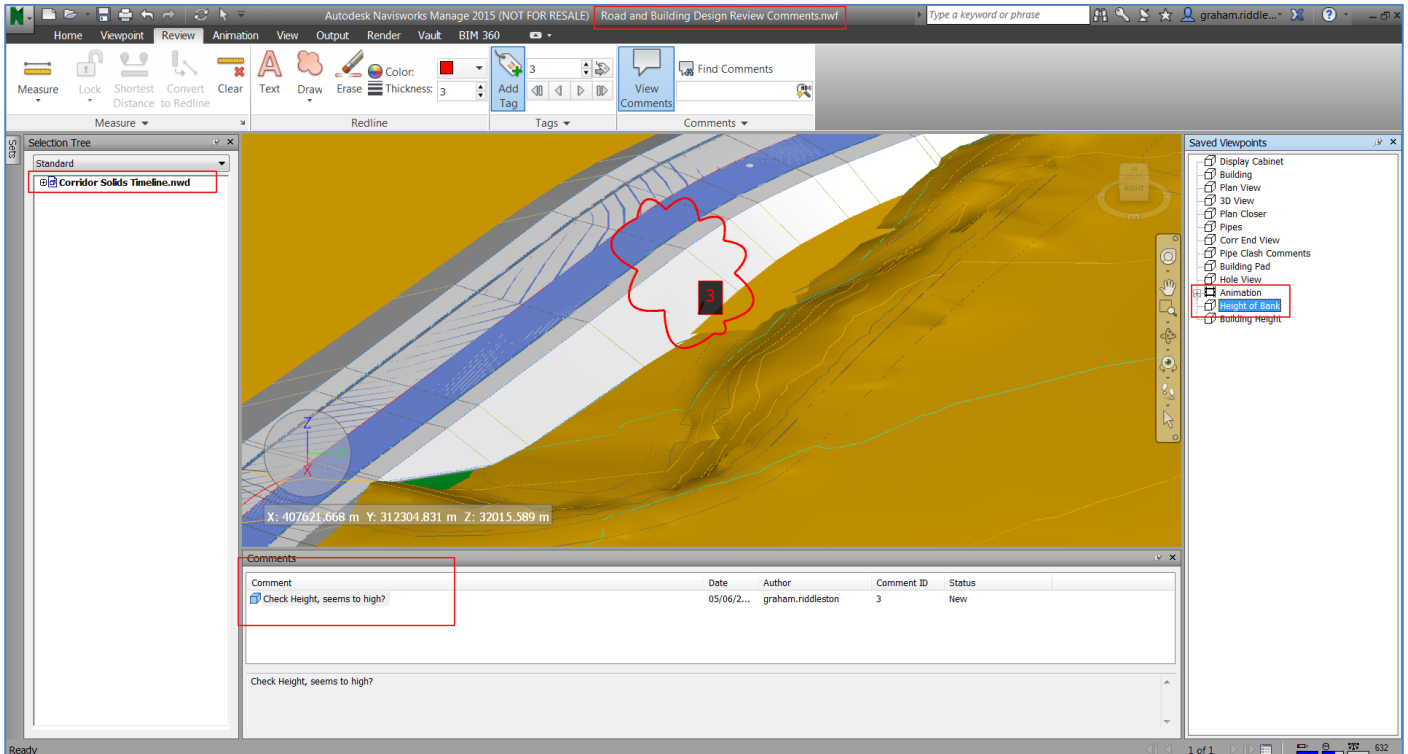
The Merge command is used when a different version of a particular design file needs to be viewed in Navisworks but instead of loading two slightly different versions of the same file the Merge command will just add any differences from the original file. To explain this further consider this following scenario:

The Navisworks session shown below has a single .nwd already loaded. Notice the Saved Viewpoints on the left side of the panel.



This Navisworks file is then saved sent to another team member for design review.

The design reviewer has opened the original file, made some comments, added some redlining then saved the file as 'Road and Building Design Review Comments.nwf'



The first designer can now open his original file and **Merge** the 'Road and Building Design Review Comments.nwf' file. This will avoid loading the bulk of the design information twice.

**Important**

Because the Selection Tree doesn't appear to have changed some users jump to the conclusion that the Merge command hasn't worked. However, if you look at the Saved Viewpoints panel you will see the new viewpoints and associated redlines and comments have indeed been appended to the original Navisworks drawing.

