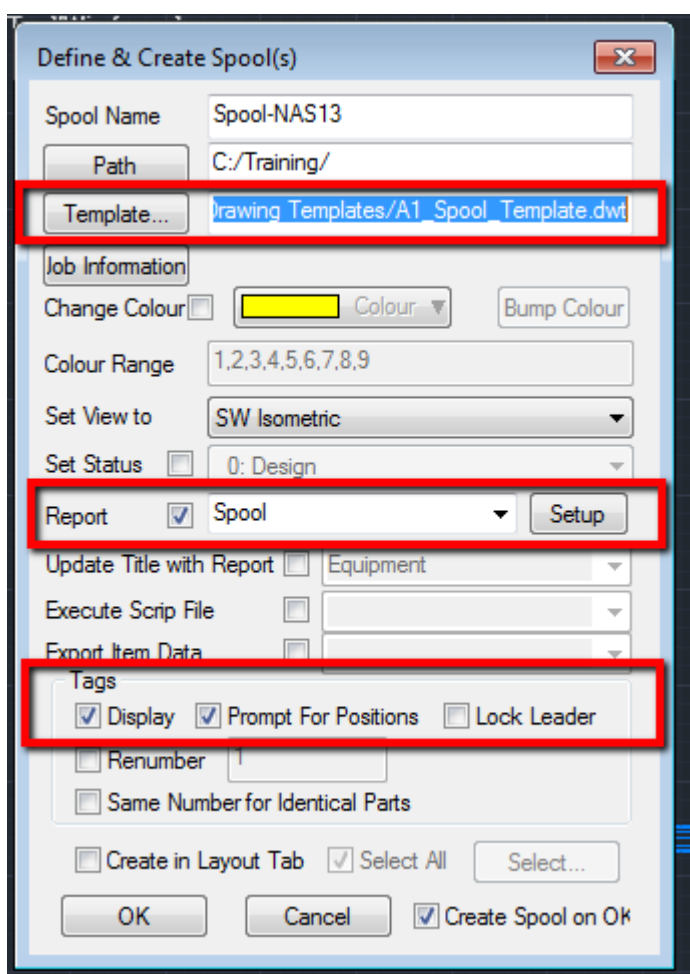


# Pipe Spooling in Fabrication CADmep

## Autodesk Fabrication CADmep 2016

How to create a pipe spool.

Use the **SPOOLDWG** command to launch the pipe spooling routine in CADmep...



Select your customised template. For details of how to customise your template see the next section in this document.

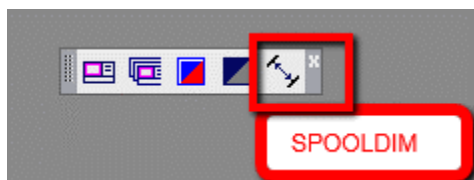
If you would like a report on the spool select which type here, the SETUP button will enable you to configure the report.

Tags can be placed on the spool drawing with this option, optionally being prompted for where they are located.

Once you press OK you will be prompted to select the pipework to spool and when you finish the selection press ENTER to create the spool drawing.

Use the **TEXTSIZE** command to set the size of the text you would like of the labels. You will need to use the **REGEN** command to update the existing labels.

Use the **SPOOLDIM** command to place dimensions that will be orientated to the Iso plane...

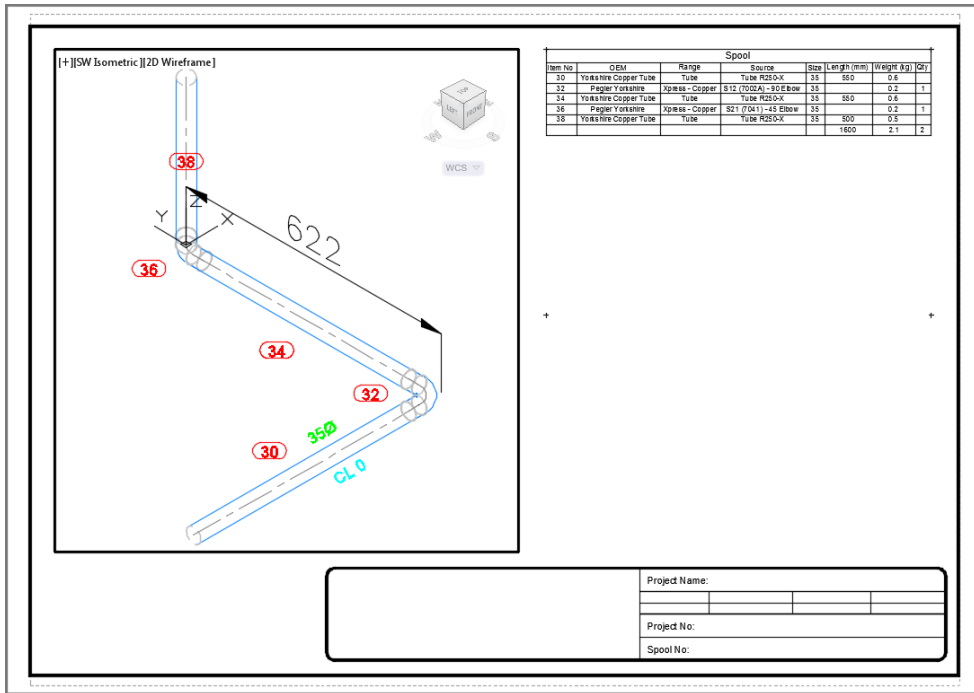


Use the CADmep text tools to place text labels ...



If you have several viewports where you would like to show different things in each one you will find using the **ISOLATESELECTEDINVP** command very useful. It isolates CADmep objects, including their text labels, from the selected viewport.

To show things that have been isolated use the **SHOWALLINVP** command.



A finished pipe spool drawing showing a spool report.

You can find further help at the Fabrication tutorial videos by searching for **“Spooling with Fabrication CADmep”** on the Autodesk Building Solutions channel on Youtube or follow the link:

<https://www.youtube.com/watch?v=YaNG-B6DZCM&list=PLY-ggSrSwbZpDzLba6zT7zyWuhVCzhBdr&index=11>

### How to customise your pipe spool template.

The default Spool Template is located in your database path in the Drawing Templates folder. For 2016 installations this will be in..

C:\Users\Public\Documents\Autodesk\Fabrication 2016\Metric Content\V7.03\Blocks\Drawing Templates

You will need to follow the normal procedures of configuring your text and dimension styles – note the names of the styles are specific. Therefore the simplest way to create your template is to copy and paste your titleblock geometry and layout configuration into a copy of this default template. From here you can tweak the styles to suit your needs.

You will also notice that there are 2 blocks called REPORT\_POSITION and REPORT\_WIDTH which are needed to locate and size the report that gets optionally placed. You will find they are location cross points on the SPOOL\_TEMPLATE layout tab. Again I would suggest modifying these blocks if you would like them edited as the easiest option.

