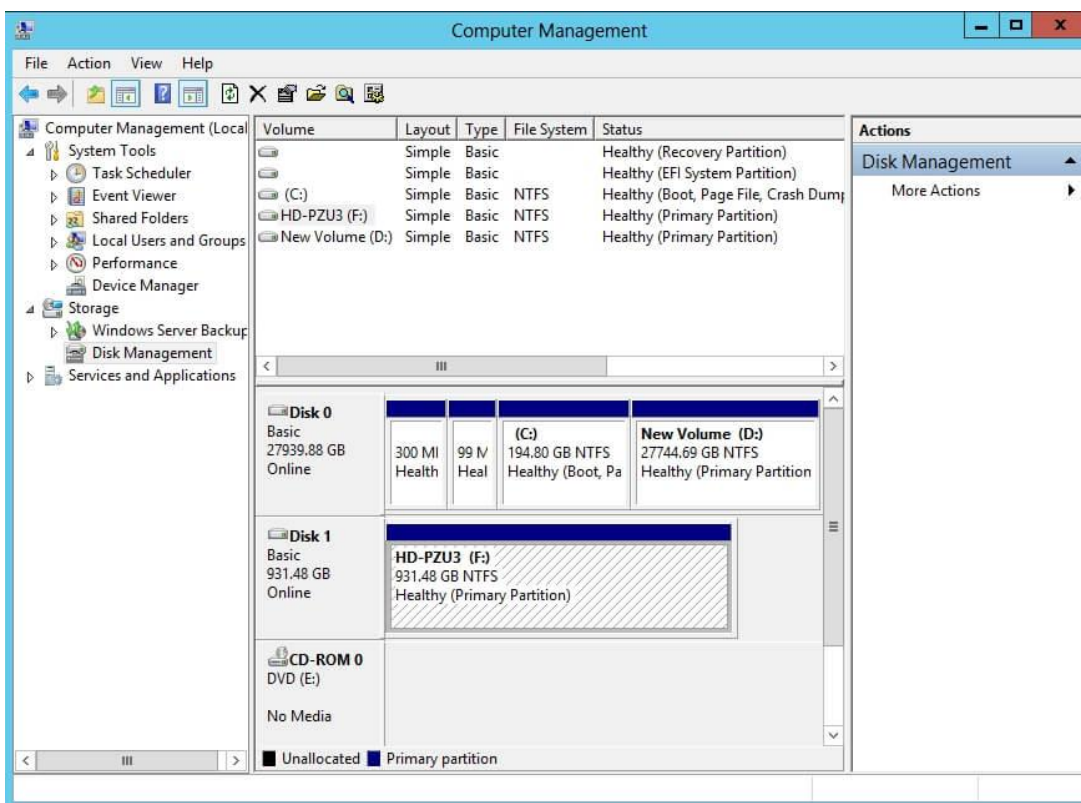
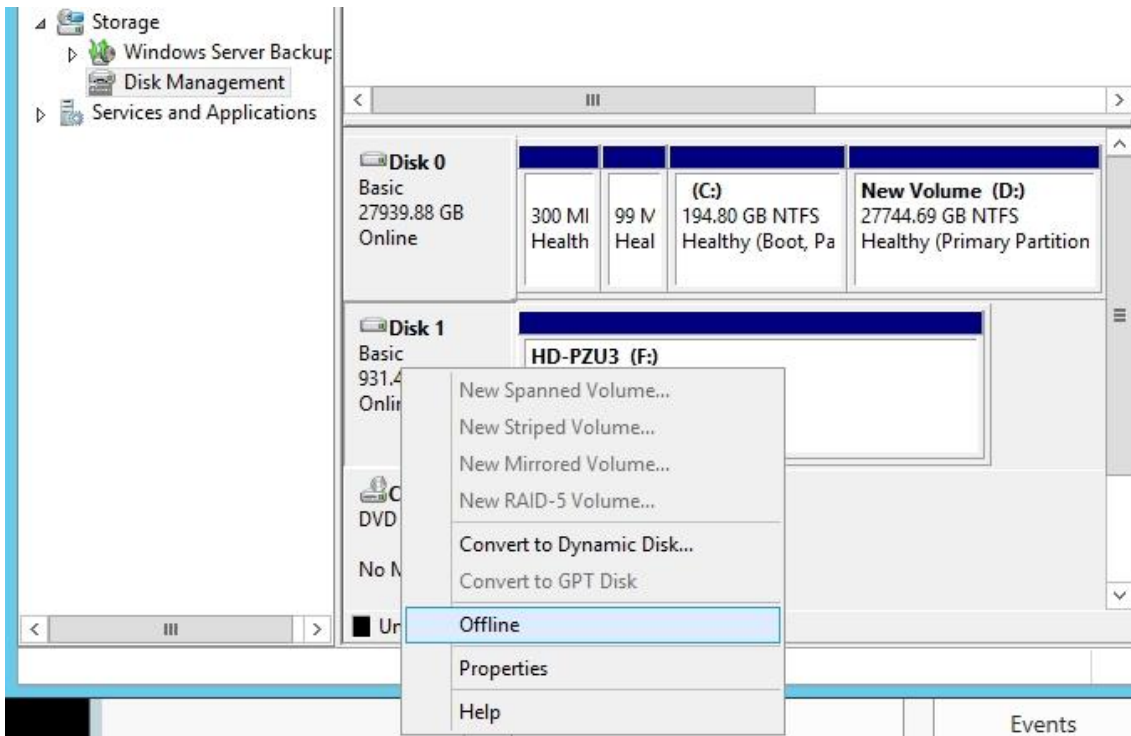


# How to add a USB disk to a Windows 2012 Hyper-V VM

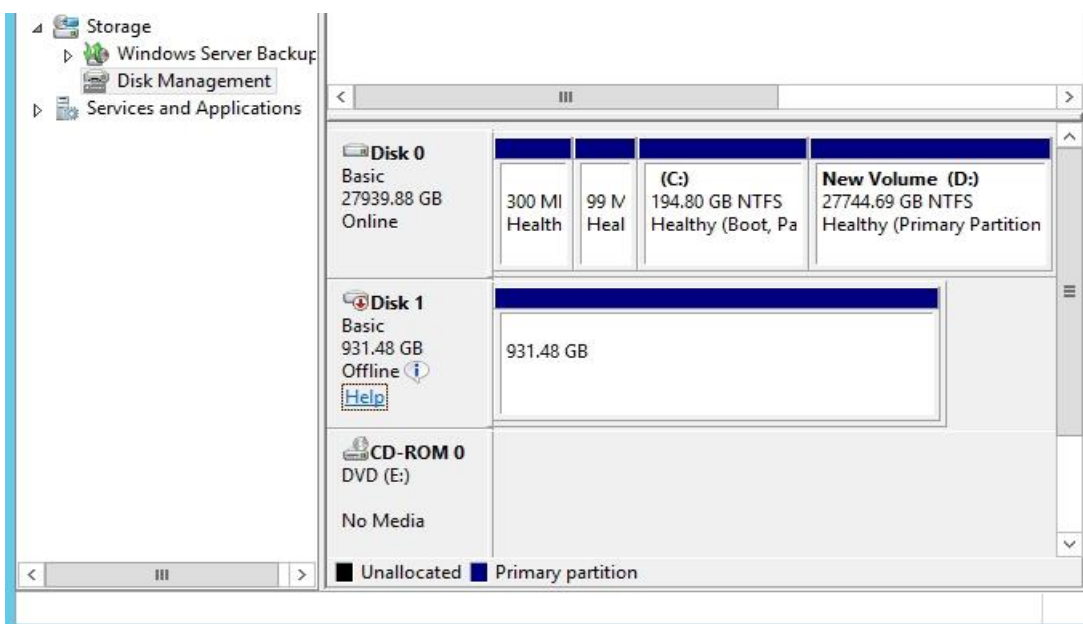
1. Attach the USB drive to the Hyper-V host server



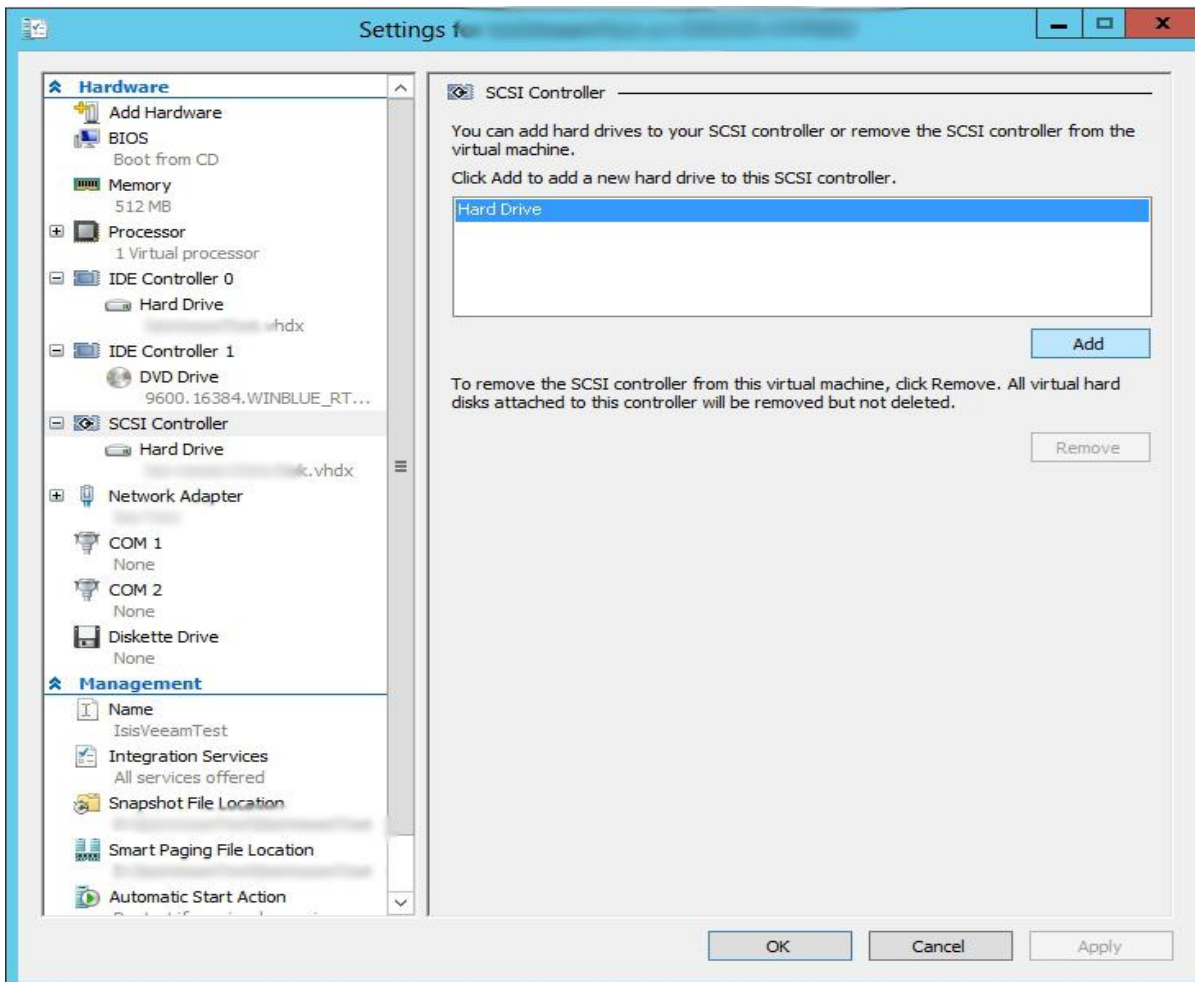
2. Right click the USB disk (in our case Disk 1) and select Offline



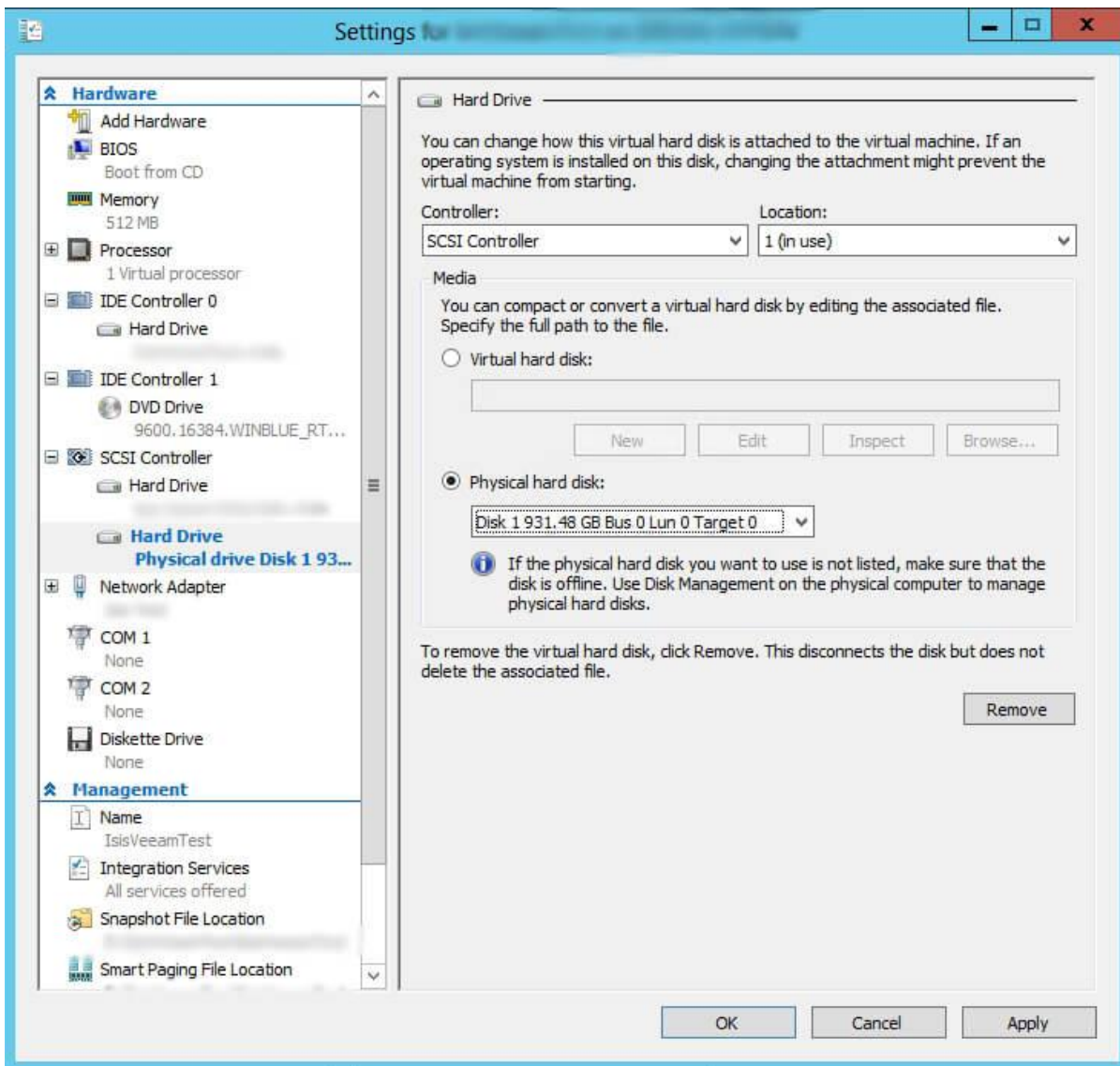
3. Disk 1 is now offline



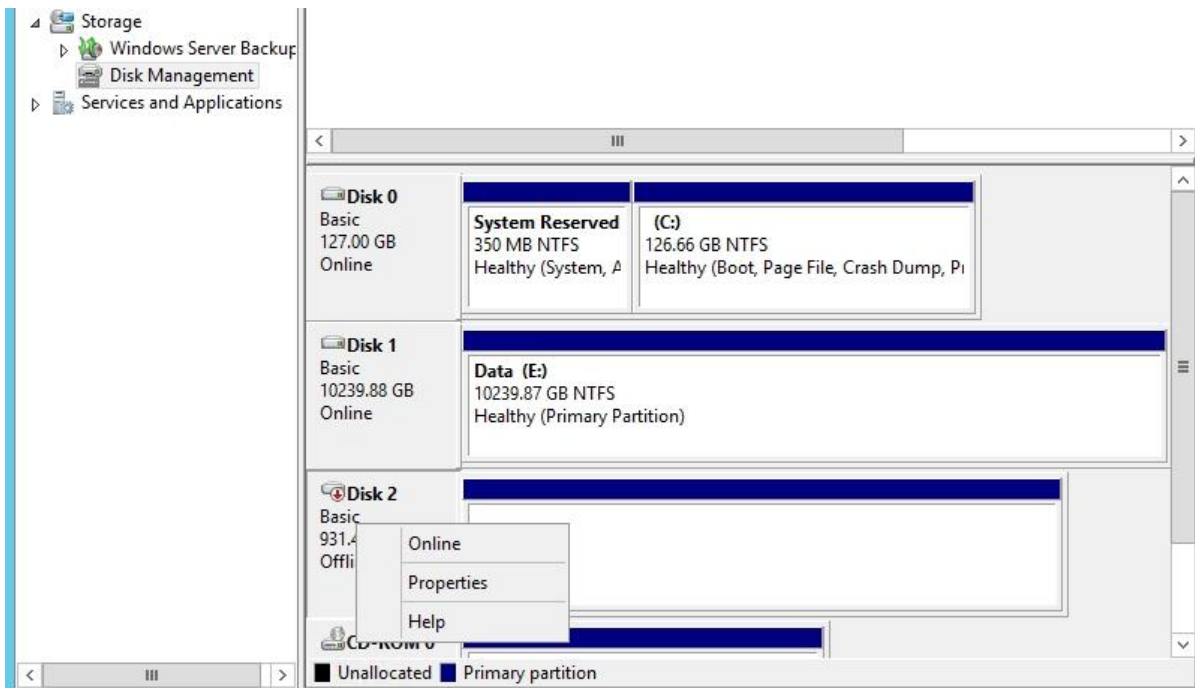
4. Select the vm Settings of the vm that you want to Add the USB drive to and select the SCSI Controller, highlight Hard Drive and click Add



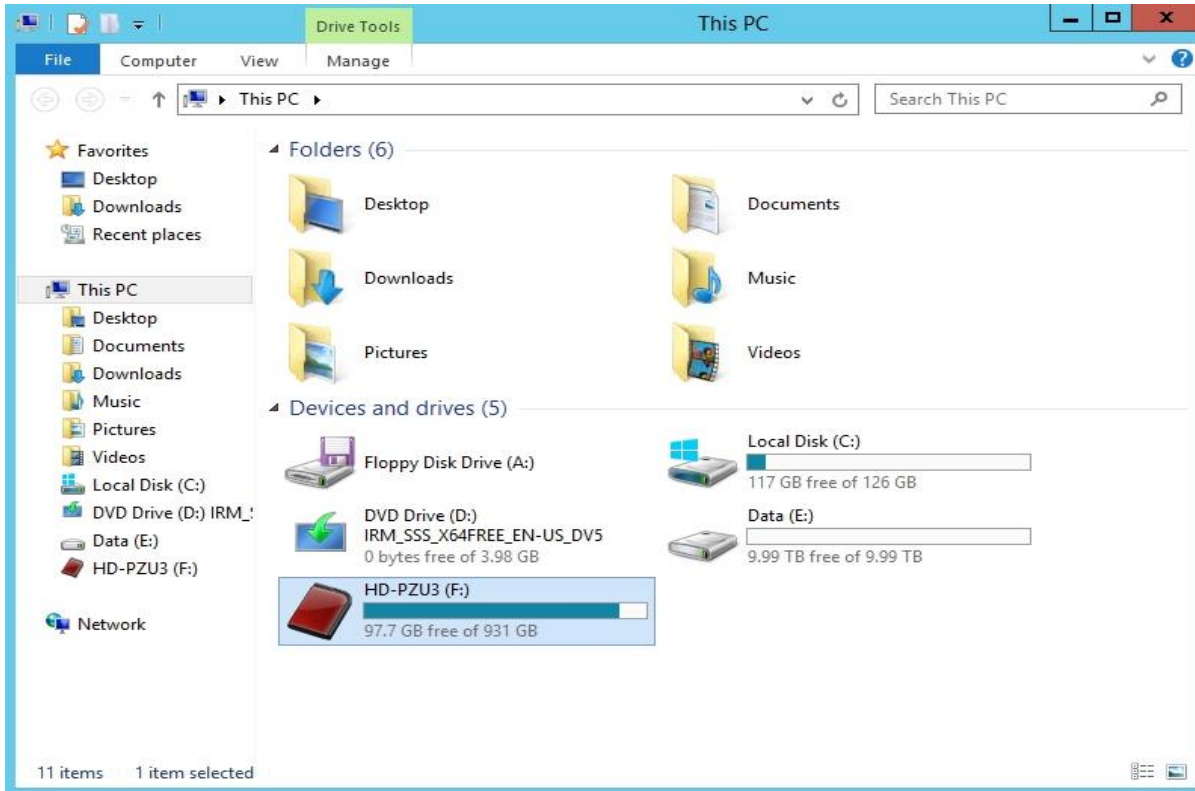
5. Select Physical hard disk, using the pull down menu you should see the offline disk on the host available to you, select it and click Apply, click OK



6. Within the vm start Server Manager, select the Tools menu, and select Computer Management, expand Disk Management, and you should the USB disk is offline. Right click Disk 2, and select Online



7. You can now see the disk in File Explorer on the VM and can copy data to and from it



To dismount the disk perform the following steps.

1. In the VM go to Disk Management, and select Disk 2 (in this example) and set to Offline.
2. In the Settings of the VM, expand SCSI Controller, and select the Hard Drive that you have used to mount the USB disk. Click Remove, Apply, OK.
3. Right Click the USB icon in the System Tray and select Eject