

Revit 2016 - Manage the Revit Server Accelerator Connection

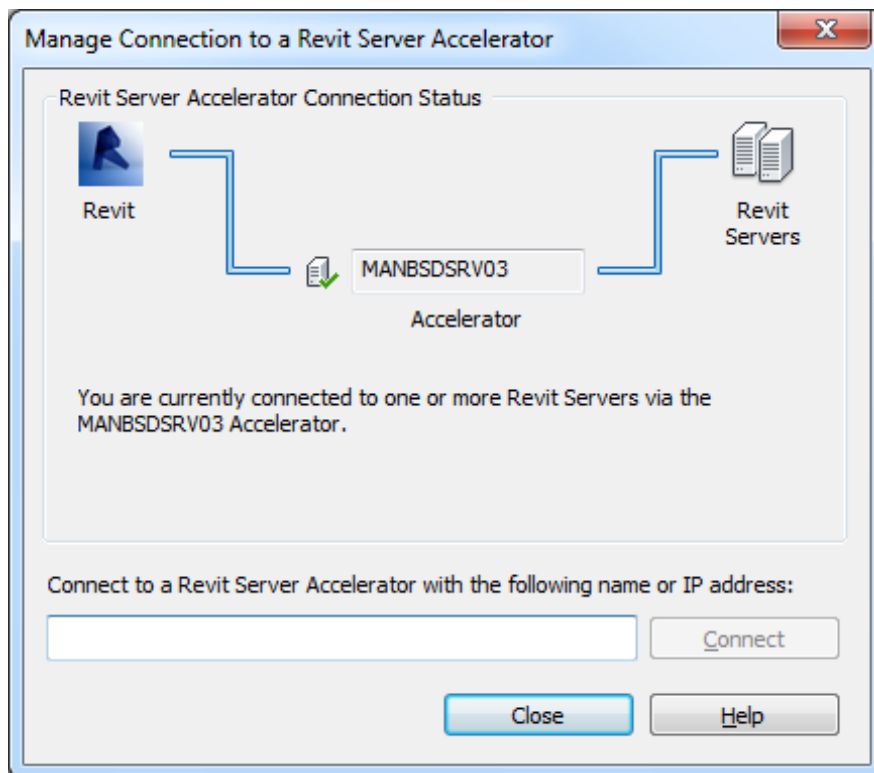
To improve performance for server-based work sharing, use a Revit Server Accelerator to connect to the Revit Server that hosts your central model.

Use this procedure to check the status of your connection to the Accelerator that has been assigned for your location (as specified in your system's RSACCELERATOR2016 environment variable) and to specify a different Accelerator when necessary. If you lose the network connection to a Revit Server Accelerator or choose not to use one, you will be directly connected to the Revit Servers.

Note: Typically, a BIM manager or administrator specifies which Accelerators are available as well as the Revit Servers to which they can connect.

1. Click Collaborate tab Synchronize panel drop-down Manage Connection to Revit Server Accelerator.
2. In the Manage Connection to Revit Server Accelerator dialog, enter the server name or the IP address of the Accelerator. Note: You cannot switch to a different Accelerator if multiple Revit sessions are open, a server-based central model is open, or the Accelerator is not available.
3. Click Connect. When a valid connection is established, the successful connection status icon displays and the server name updates.





4. Click Close

