

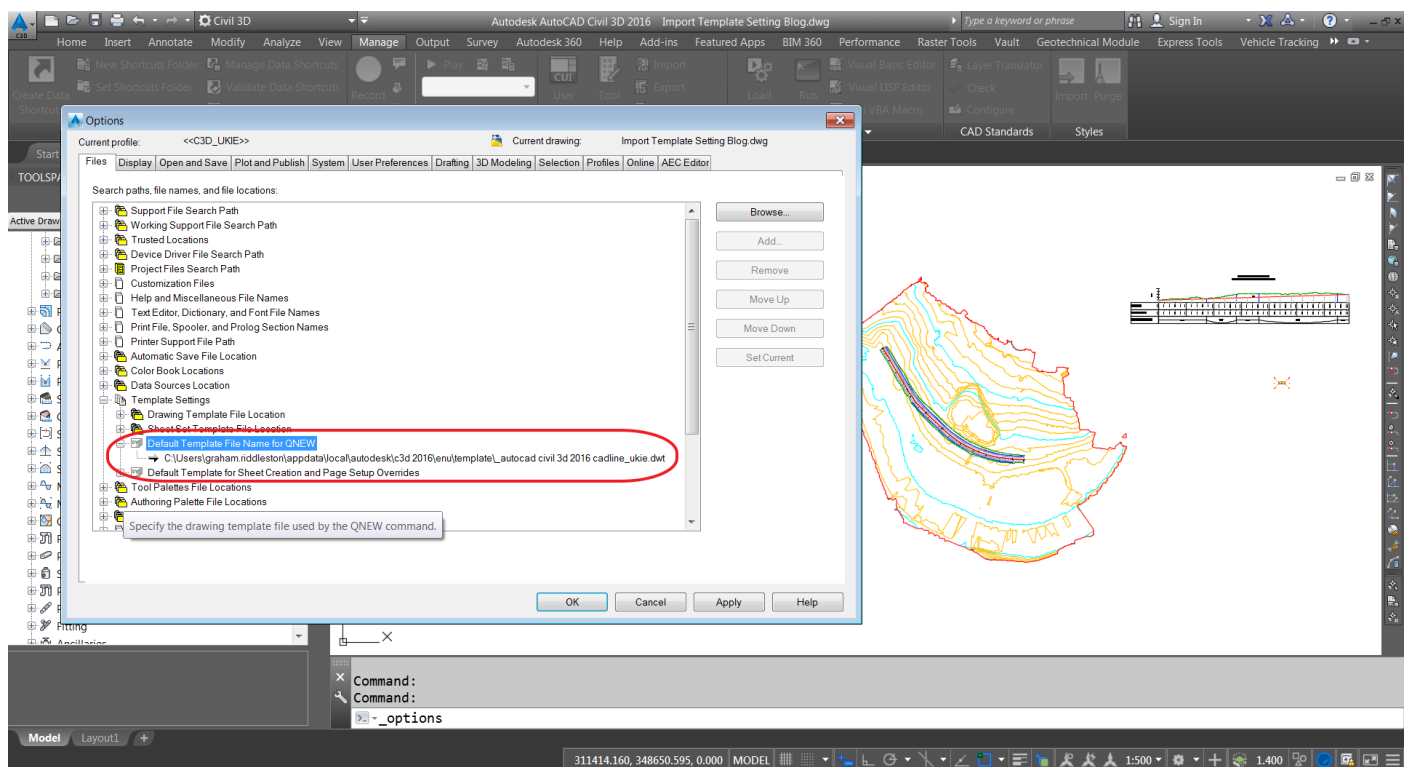
Civil 3D 2016 – Import Styles and Settings From Another Drawing

Introduction

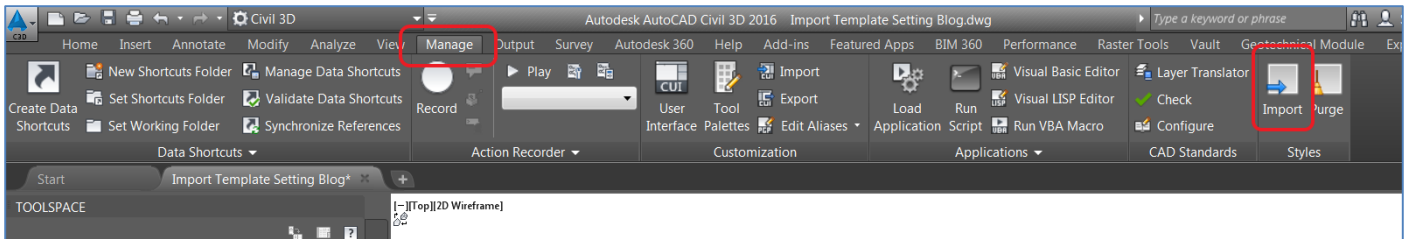
I often get the comment on training courses and consultancy assignments “I like the way your template is set up, how can I get those settings into my existing drawing?” Fortunately for Civil 3D user there is specific tool for the purpose.

Import Styles and Settings from Another Drawing:

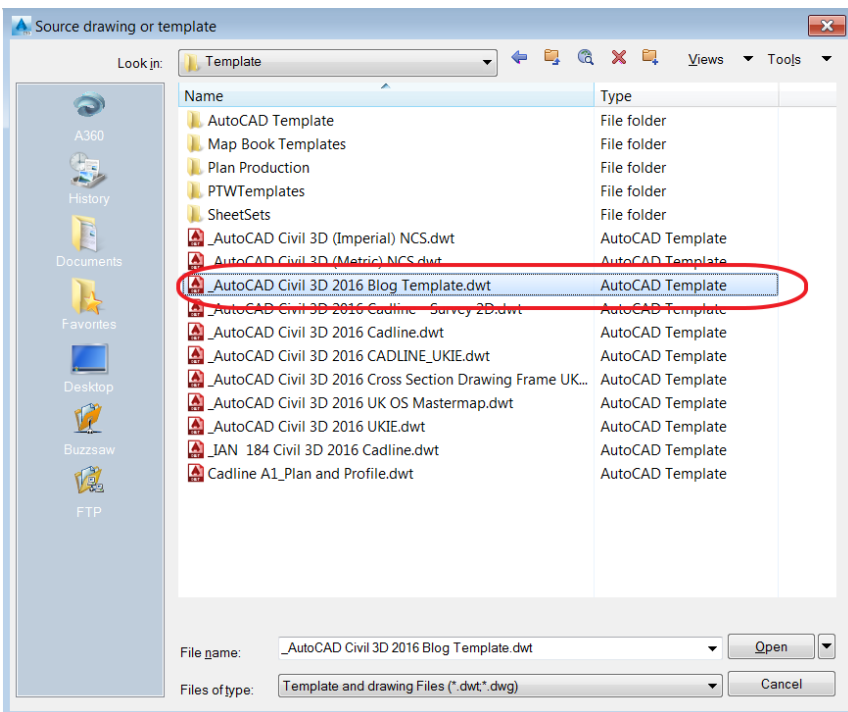
The drawing shown below has been created with a standard Cadline template, then one or two styles and setting have been editing in the drawing to suit the requirements of the current design. Those



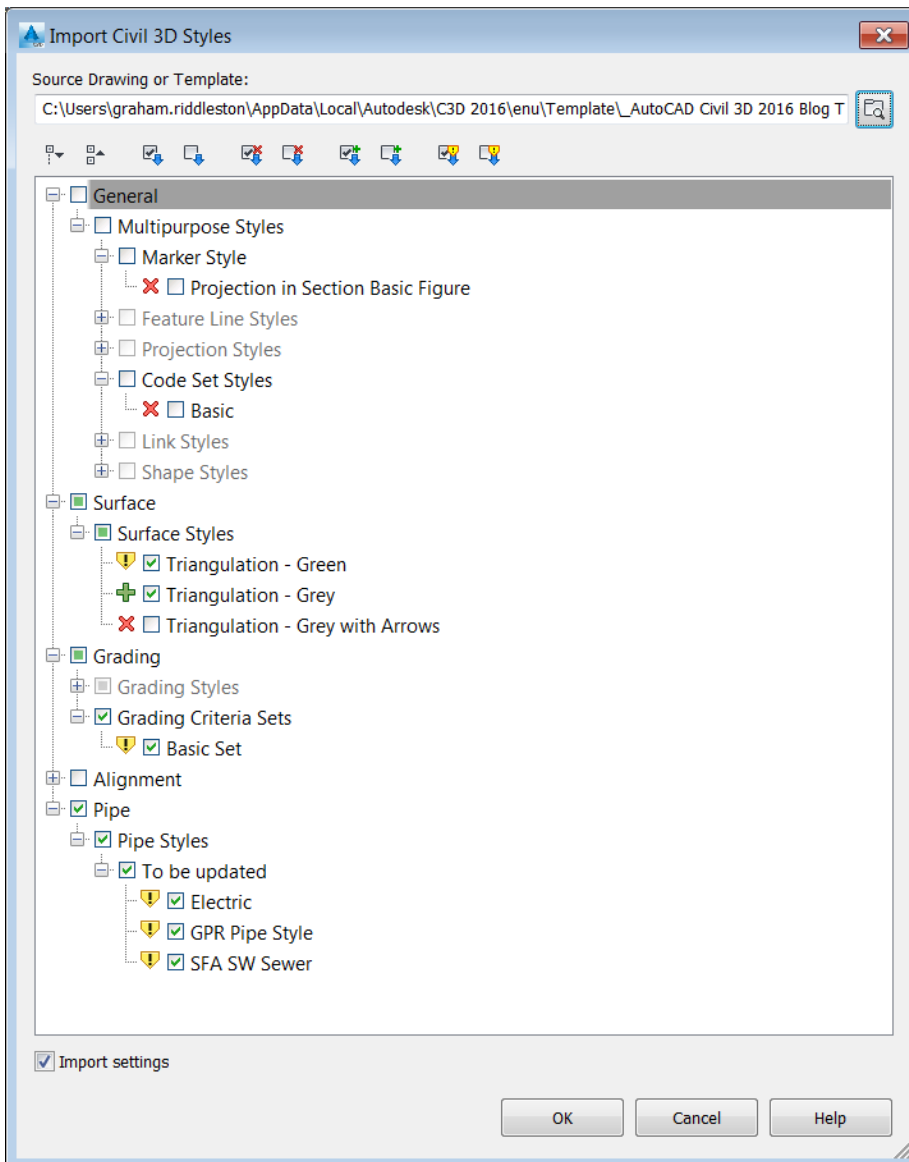
From the Manage Tab select the **Import** button as shown below:





You will be prompted to save your current drawing then a file dialogue will be launched (shown below) to allow you to navigate to the location of your desired drawing (dwg) or template (dwt). I have selected another template.



The dialogue below will be launched which, when expanded, will display various icons.

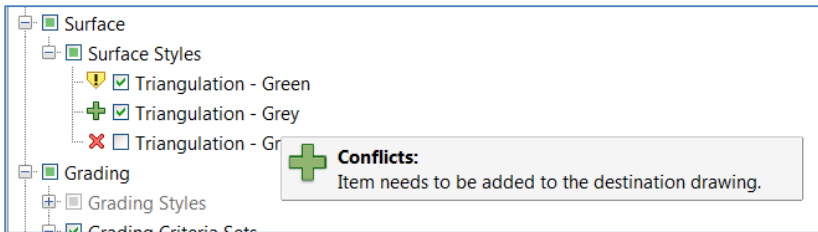


The Yellow Shield  indicates a conflict, e.g. the version of the style in the current dwg is different from the style in the source drawing/template.

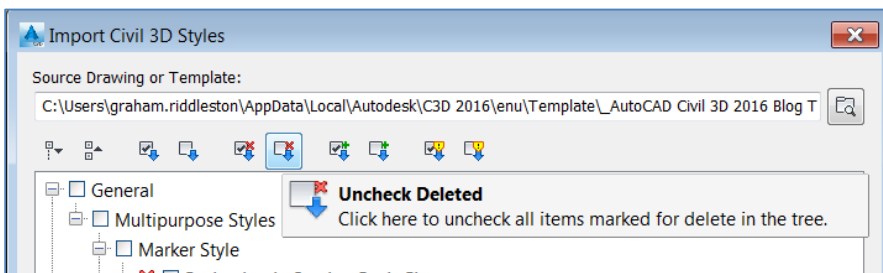
The Green Plus symbol  means the style needs to be added to the destination drawing

The Red Cross symbol  means the style needs to be deleted from to the destination drawing

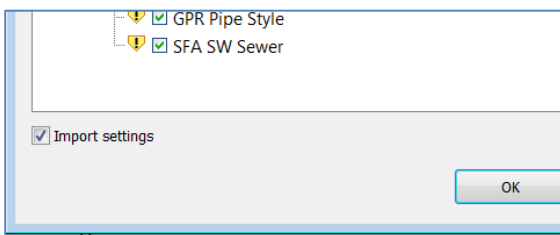
To get more information, hover your mouse over the style name:



The icons at the top of the dialogue allows all Conflicting, Added or Deleted items to be selected or unselected with one click.



At the bottom of the dialogue there is a check box to allow the import of any new styles.



After selecting OK a dialogue will be displayed showing the results of the import.

