

How To Create a From/To List Showing Wire Size & Colour

AutoCAD Electrical 2017

This can be done in two different methods.

Method 1:

In your default template (*.DWT), you can change the wire types to be wire size and colour specific. As an example instead of voltage, as shown in the dialogue below, e.g. 400VAC, 100VAC, 24VDC etc. you could specify the wire layers to be *BK_2-5mm2*, *RD_1-0mm2* etc. In this manner, the wire from/to list would display the wire types of the same name as the wire layers.

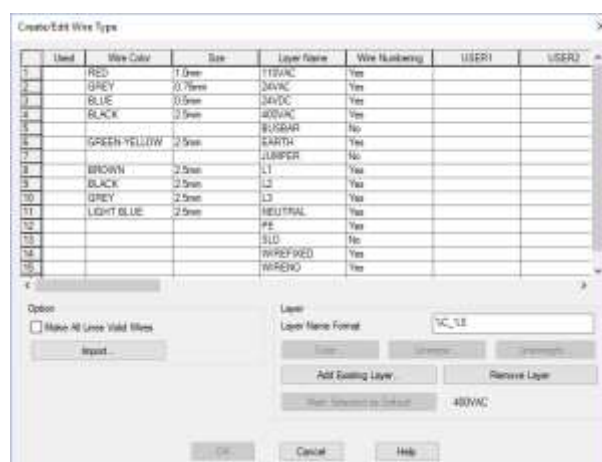
N.B. spaces and dots are not used in the layer naming.

Method 2:




The wire types are defined by voltage for simplicity but you would still like the wire from/to list to list connections by wire size and colour.

The wire types are defined in your title block template (*.DWT):

Select the *Schematic* ribbon tab > *Edit Wires/Wire Numbers* panel >  *Create/Edit Wire Type*

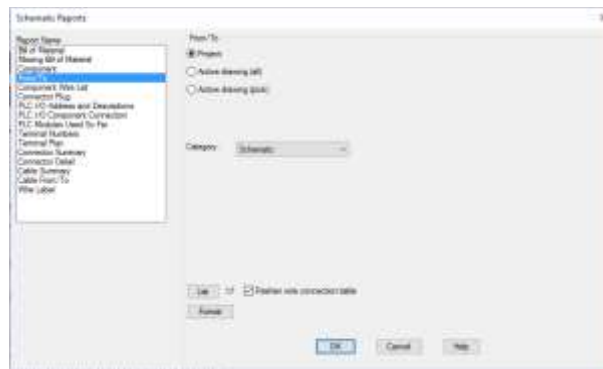


You will note that you have the ability to enter a *Wire Color* and *Size* along with a unique *Layer Name*.

When you draw a schematic you can change the wire type as you use the  *Wire*,  *Multibus* or  *Insert Ladder* commands

To produce the wire from/to report:

Select *Reports* ribbon tab > *Schematic Reports* panel >  *Reports*



Select *From/To*

Select *Project*

Select

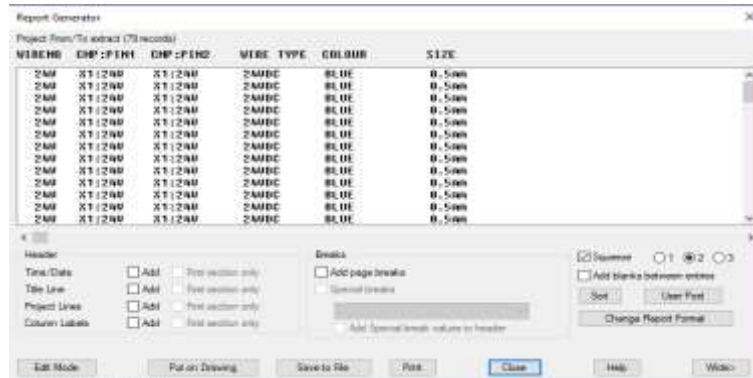
Select

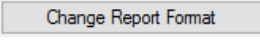
Select

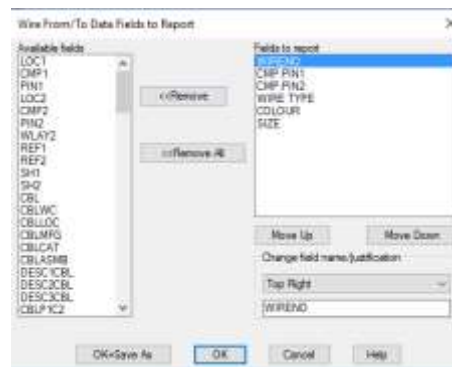
Select the Installations (functions) and the Locations you wish to analyse.

Select

The following dialogue, or similar, will be displayed:



Select 



Typically, you could have the following fields for a *From/To* report

Available Field	Typical Field Name
WIRENO	Wire No
CMP:PIN1	From
CMP:PIN2	To
WLAY1	Wire Type
WIRECOLOR1	Colour
WIRESIZE1	Size

Of course the field name and justification can be changed so that the reports are more meaningful. If you were using Method 1, then the report would not need to contain the WIRECOLOR1 & WIRESIZE1 fields.

Select  to save the changes to the default *From/To* report

If the report is customer specific, select . This can then be called up again on the initial dialogue for reports 