

# Autodesk Vault 2017

## What's New Vault 2017

### Security Updates

A number of changes have been made to enhance and simplify Vault file and folder securities, merging role, object and state based securities and new interfaces to provide clear controls and administrative views of object access.

The Autodesk Vault 2017 boasts an enhanced security model combining previously disparate state and object based securities on files and folders as well as enhancements to Copy Design folder management and a new Autodesk Factory Design integration.

#### > Merge object and state permissions

Autodesk Vault Workgroup and Professional 2017 delivers major enhancements to our security model, allowing administrators to configure and manage the access rights for users and groups in a more granulated way, controlling individual access to a Vault object based on organizational area or business line while avoiding potential conflicts with lifecycle based permissions.

In order to better manage Object and State based access to objects we have a new optional gated security paradigm which is a combination of these two security models, taking into account a user's role permissions, where applicable group membership and overlaying object and state based securities to define the resulting user access to an object.

#### > Effective permissions

In order to simplify permission configuration the whole security user interface has been overhauled to include a grid view of user and group access settings.

To assist access management, we have also introduced a new tab to the details dialog for reviewing the effective access rights, providing an immediate and clear summary of selected users effective access rights to the selected object.

#### > Propagating Folder Permissions

In addition to the above, administrators can now control how folder state security settings should propagate to the contained files, inheriting the folder access permissions, defining custom access controls or clearing any security overrides based on folder state.

#### > Select Security Model

You now can easily decide which security model should be used within Vault.

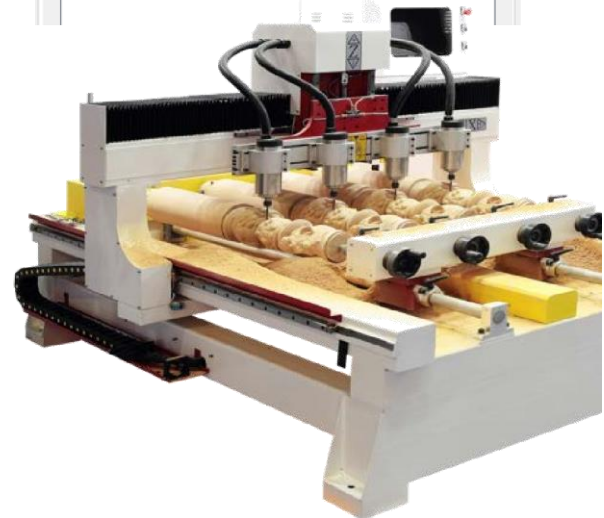
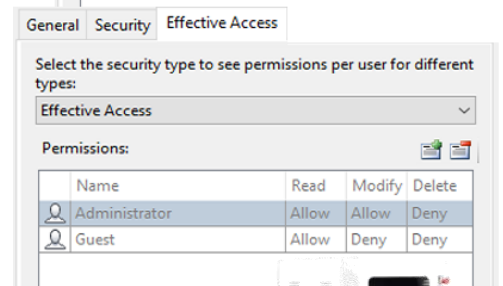
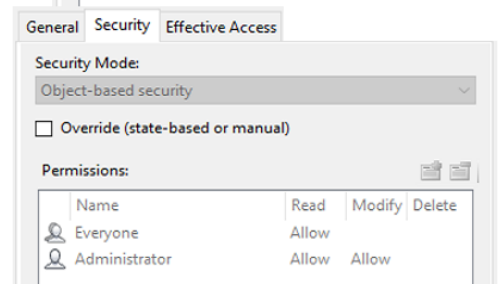
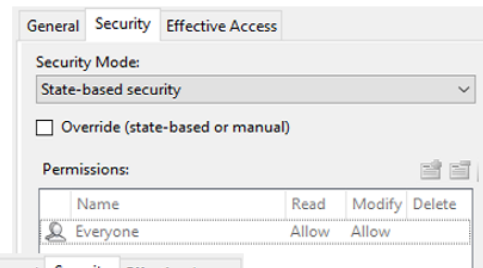
Those happy with and dependent on the current security approach can choose to continue as is, while those with growing needs in defining security across teams and manage layered access rights can select this new method to best suit their needs.

This choice also helps with the transition to these new capabilities.

For more information about Autodesk Vault, visit [www.autodesk.com/vault](http://www.autodesk.com/vault)

For more information about Autodesk Product Design Suite, visit [www.autodesk.com/productdesignsuite](http://www.autodesk.com/productdesignsuite)

To locate the reseller nearest you, visit [www.autodesk.com/reseller](http://www.autodesk.com/reseller)



## Usability Enhancements

A number of enhancements to Copy Design, file rollback in Vault explorer coupled with add-in changes around Inventor's AnyCAD integration, Save As options and place component drive greater productivity and usability in the 2017 release.

### Copy Design Folder Panel

By popular demand, Vault Workgroup and Professional 2017 Copy Design allows users access to file paths via the folder list view. This new folder panel view allows users to set destination path by manually updating the destination folder text, or more importantly assign file destination using find and replace text capabilities to update the folder path string.

Users are now able to easily substitute values like project number in the folder path, simplifying the copy process in instances where there is a complex rules based folder structure or where users prefer to individually browse / edit folder locations per file.

Of course this new panel view provides access to regular right click context options to configure file actions like copy and replace.

### File Rollback Update

After introducing the revision rollback feature in prior releases, Vault 2017 now allows you to multiselect files for File Lifecycle State Change Rollback, reducing the number of steps required to resolve unintended state and revision changes across a dataset.

### Inventor AnyCAD Items

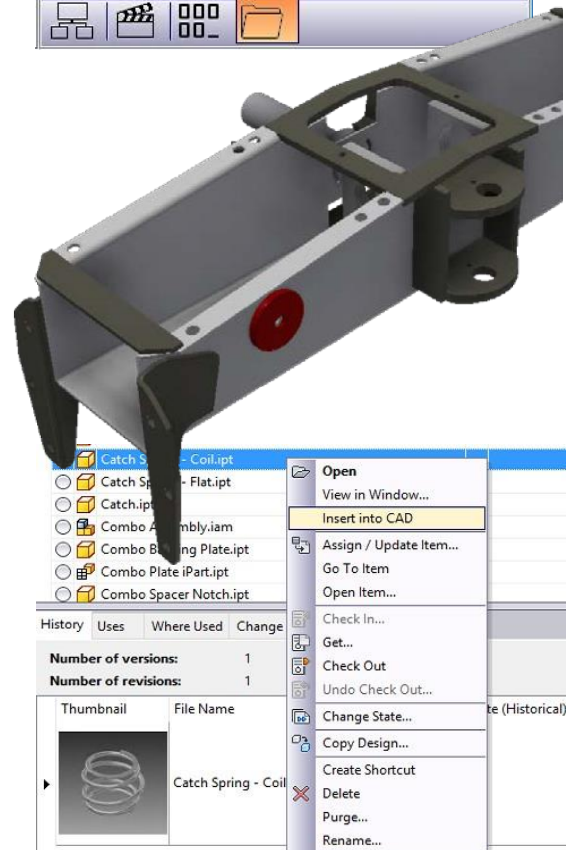
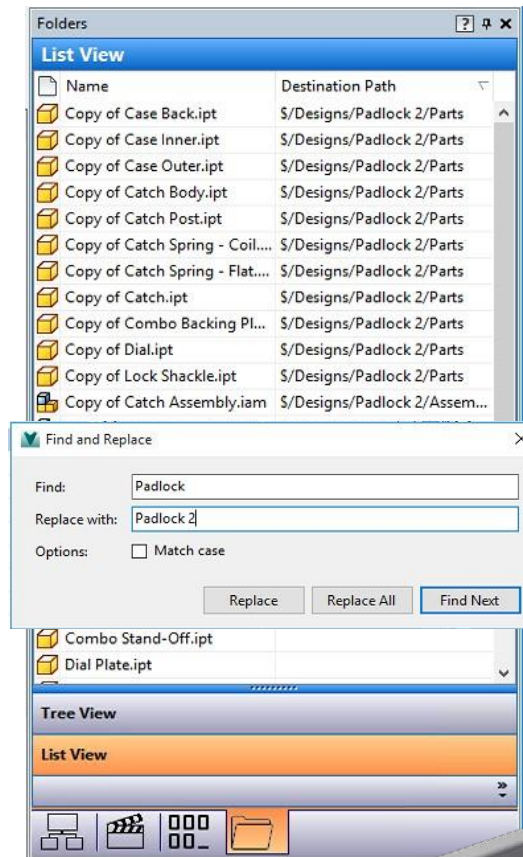
Following on from the initial implementation of Inventor AnyCAD, file reference enhancements have been made to item assignment process.

Vault Professional 2017 now creates a direct link between the imported CAD model and item, delivering a far more familiar user experience and more accurate view of component definition.

### Insert into CAD

Additional functionality will also be delivered for Vault 2017 this year via the appstore, with an extension permitting users to insert CAD files from the Vault Explorer window directly into your Inventor session.

This simple productivity enhancement addresses a long standing request, speeding up the placement process by bypassing the place from Vault dialog and better aligning with user workflows.



## Factory Design Integration

This new integration enables greater productivity and increases data consistency to help users manage factory assets and layouts much more effectively.

### Factory Design Enhancements

The new Vault 2017 integration lets users store, view, and download assets libraries directly from Vault Professional.

Adding the Factory Configuration to your Vault server enables users to access additional capabilities, including the ability to track where the assets are used, find the revision history and review instance-specific properties.

In addition to instance specific properties the integration reveals asset-specific configuration information making it much easier to understand where and how often assets are used in a layout.

### Asset Library

Manufacturing users now also have the ability to publish new assets directly into Vault Professional, managing these in specified folders and capturing specific asset properties then available in Vault.

Once in Vault, users are able to create and manage different versions and revisions of an asset.

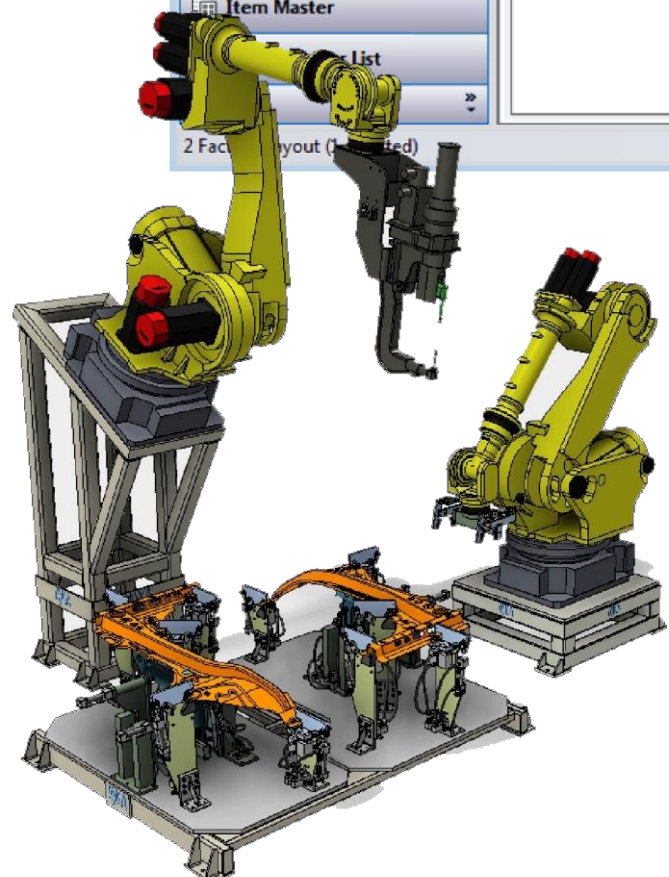
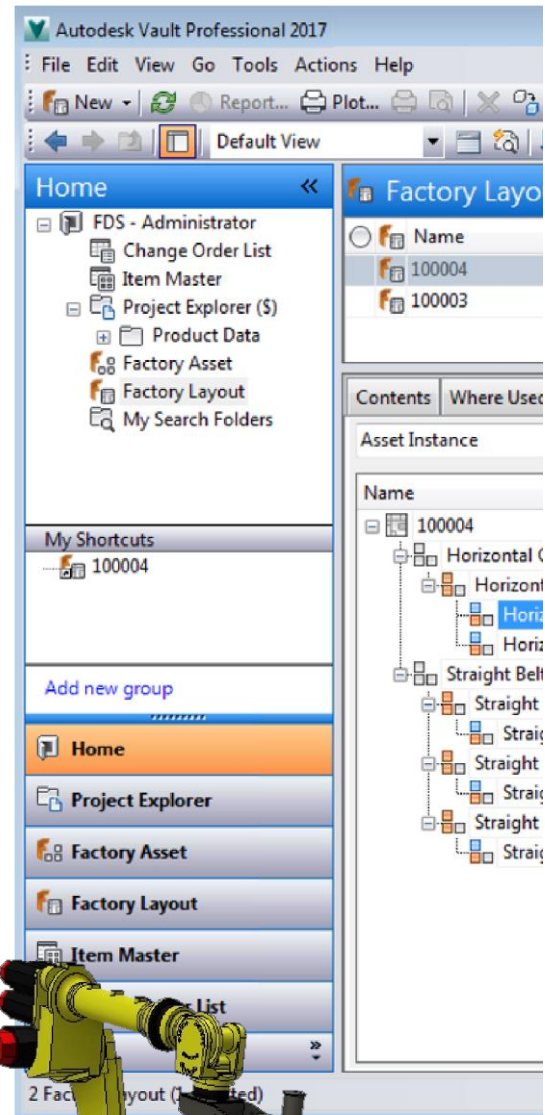
Finally, Inventor users now are able to access and insert assets direct from Vault within the asset browser, removing a number of additional steps to download and place.

### Uses and Where Used

The new "Factory Layout Info" tab available in Vault Professional Explorer includes 3 different views:

- Asset
- Asset Configuration
- Asset Instance

These views provide detailed information about quantity, key parameters, asset tag and properties information for each asset used in a layout.



## Administration

Vault 2017 includes changes to the licensing capabilities, as well as improving the install experience and server side security with the protection of sensitive service account details

### > New Licensing

Another major enhancements to Vault 2017 is the transition from server side to client based licensing.

This change, is designed to enable new approaches for organizations to purchase and implement Vault Workgroup and Professional, while continuing to enable better controls for license management in larger organizations.

By permitting users to connect and use a license from their client we can enable access for sole contractors with their own Vault license to work on a project basis with an existing company's Vault or allow organizations to better manage Vault license counts based on work cycles with single user subscriptions.

For existing Vault users with large implementations you can continue to use this licensing in conjunction with multiple user subscriptions, previous vault versions, Vault Office and thin clients managed via a central license server, and client side licensing continues to allow license grouping for reserving or limiting access by company division or group.

Users will also have new client side access to license details and status.

### > Improved Password Security

The Vault 2017 release improves password security for critical SQL service accounts.

The enhanced security includes password encrypted and allows administrators to change the default password for SQL Service accounts via the ADMS Console.

### > Repair issues during pre-check

In an effort to reduce installation issues and administrator interaction, Vault 2017 introduces a new Auto-Fix feature for the IIS Connection Timeout and the ASP Status pre-check.

If the system finds an issue with either of these pre-checks during installation, the administrator can click Re-Test to have the system attempt to automatically correct the issue.

If you do prefer to do this manually, you are able to leave the install screen to perform the changes, but this simple enhancement for common settings issues can help speed up and simplify initial installation.

### > 4K HD Monitor Support

To align with other Autodesk applications the Vault 2017 interface has been updated to support new monitor hardware and provide a clean scalable UI for 4K monitors.

