

# elecworks™ Tips & Tricks

## Electrical Designer Conversion Best Practices

This document focuses on showing you how to bring in your Electrical Designer project, library and catalogue data and discusses ways of tidying up your Electrical Designer project prior to conversion. Once you have the libraries and projects converted then the following rules can be followed:

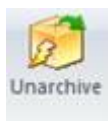
### Symbols Library Unarchive

When you unarchive the library, these symbols will be placed in a library called “ED – <<OLD ED LIBRARY NAME>>”. The symbols can be reused if you wish although we would generally recommend using symbols that are out of the box as default.

To have a project see these symbols,



Go the *Library* ribbon tab > Select



Select

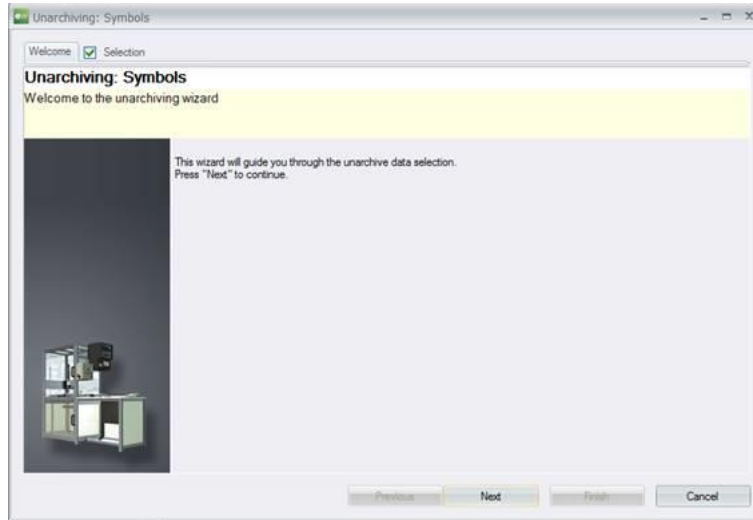


Browse to the and highlight

Select 



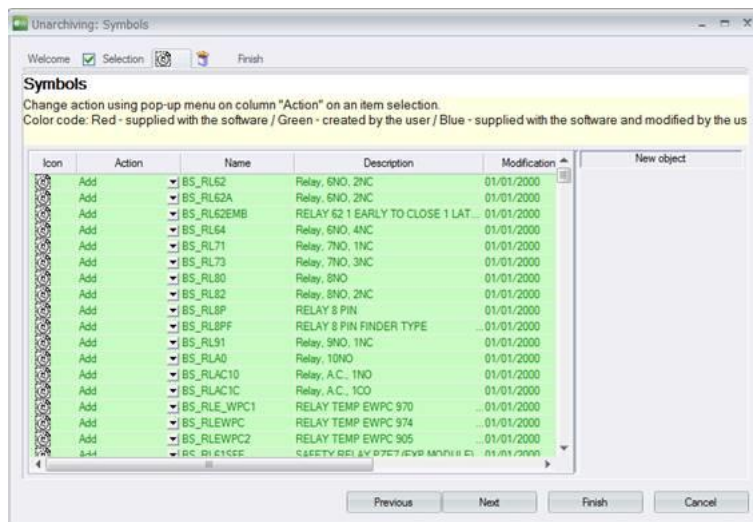
The following dialogue will be shown:



Select 

Select 

You can then decide whether you want to import all symbols or just the ones you want to keep




Select 

Select 

Select  until completed

The Electrical Designer symbols library will now be imported into elecworks

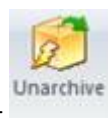
If you wish this library to be used for new projects, right click over the current activated project > *Configurations* > *Project* and select the  Libraries and palettes tab

Ensure the  “ED – <<OLD ED LIBRARY NAME>>” library is selected

### Title Border

The title border is one of the most important parts to convert. The title border was often in the Monta directory within Electrical Designer and therefore will probably be needed to be converted separately from the main symbols library. You can import a DWG into the Title Block Manager and use the preconfigured Electrical Designer conversion which is an attribute mapping facility.

### Projects Unarchive

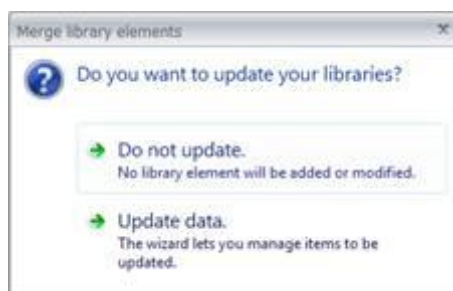


From the *Projects Manager* > select

Browse to each projects directory EDexport.zip file and highlight. Unfortunately you have to do them one at a time.

Select 

The following dialogue will be shown:

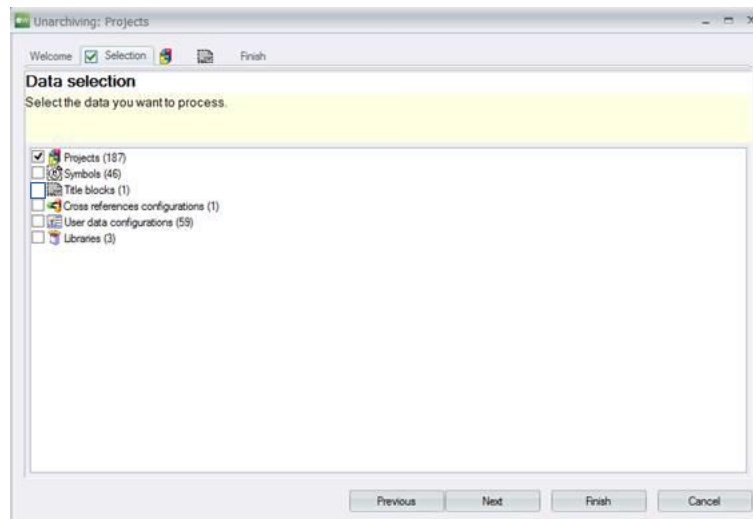


Select → [Update data](#)

If you have unarchived the “ED – OLD ED LIBRARY NAME>>” library already then you don’t need to import the symbols on a per project basis but this option will allow you to make the choice

Select 

Select the  Projects tick box **ONLY**



Select 

Select 

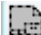
Select 

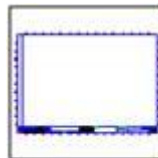
Select 

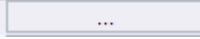

The project will be imported into elecworks

## Running a Project (the following will have to be done on each project as and when you use it)

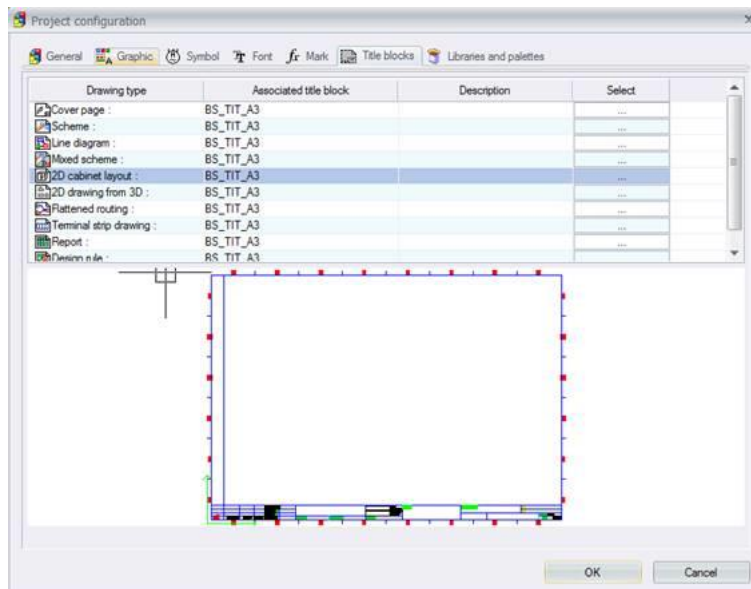
Make the project you wish to work with current

Right click over the current activated project > *Configurations* > *Project* and select the  **Title blocks** tab



Select  and in the ISO 215 size, select  (or your title block that you have imported into elecworks)

Repeat for all drawing types:



Select 

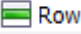
→ Update all the related schemes.  
All the schemes linked to the modified title blocks will be updated.

Select


Right click over the current activated project > *Configurations* > *Project* and select the  tab

The rows need to be changed to alphabetical



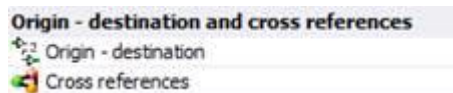
Select **fx** to the side of the  Row

Select **Row identified by letters (ASCII).**

Select  Replace formula

Select 

The cross reference formula needs to be changed to the Electrical Designer methodology



Select **fx**

For both “origin – destination” and “Cross references” replace the current formula with the following:

`IIF(LEN(BOOK_TAG) == 0, "", BOOK_TAG + "-" ) + FILE_TAG + IIF(VAL(FILE_HASCOLUMN) == 0, "", "/" ) + COLUMN_TAG) + IIF(VAL(FILE_HASROW) == 0, "", "" + ROW_TAG)`

Select 



From the Process ribbon tab, select

This will not override your old Electrical Designer wire numbers but will put elecworks wire markers down with the same value as previously defined in Electrical Designer.

## Conversion Notes

- Errors such as no parent device are still errors in elecworks
- Terminal rails and panel layouts are not converted
- Dumb objects that represent a symbol are still dumb objects
- Cross referencing that was manually entered will be overwritten with the correct cross reference values
- Some information that may have previously been invisible may now be visible
- Short circuits will still be short circuits in elecworks
- Wire markers that are just text and not intelligent Electrical Designer wire number blocks will not be converted
- If symbols exist within the schematics but not in the library, these symbols will not be updated to elecworks intelligent ones

