

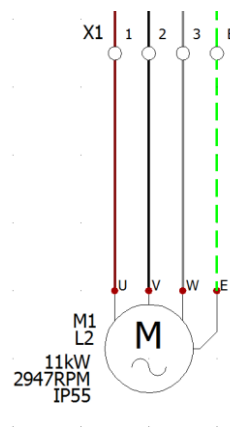
elecworks™ Tips & Tricks

Assigning a Cable in the Schematic

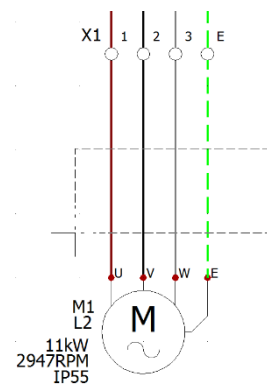
A cable can be assigned in a single line diagram, a schematic or the Terminal Strips editor. Assigning or changing information in one place will automatically update or make available in another meaning consistency of information.

This document shows you how to assign a cable in the schematic.

Draw a circuit similar to the one shown below:

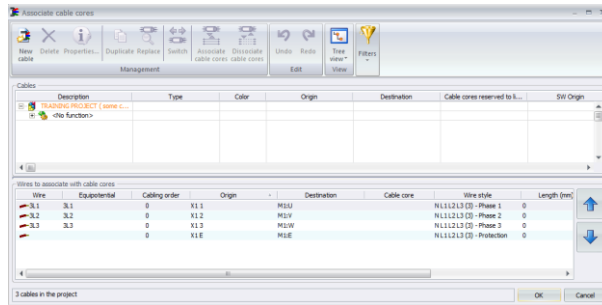


Highlight using a crossing window the selected wires you wish to change to a cable.



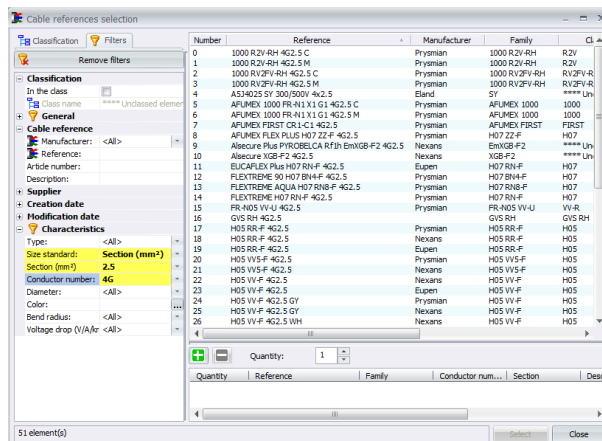
Right click and select  Associate cable cores...

The wires that were selected will be shown in the bottom half of the dialogue. The top half shows any existing cables in the project that are either available or used. You can either select an existing project cable or add a new cable. In this instance, we will add a new cable.



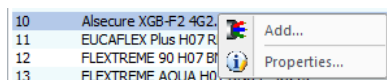
Select


The cable references selection dialogue will be shown



In the above example, a filter on **section = 2.5**, **size standard = section (mm²)** and **conductor number = 4G** has been defined.

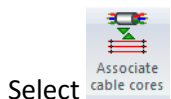
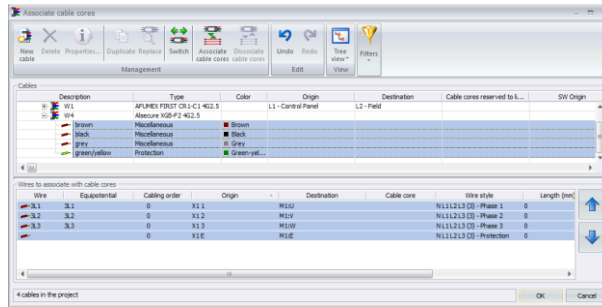
You can right click on any cable on the right of the dialogue and review the *Properties*



Select  to add the cable

Select 

The new cable will appear in the top half of the *Associate Cable Cores* dialogue. Highlight the cores of the cable in the top half of the dialogue and the existing wires you effectively wish to replace with a cable in the lower half as shown below:



Select



Select

The cable will now be shown and available in the reports.

