

elecworks™ Tips & Tricks

Creating Wire Types

Wire types are ideally defined within your template project thus meaning that every new project automatically carries the wire types you wish to use. If you are having to create wire types every single time you create a project then **stop**, define them in the template project and you'll never have to define the company standard wire types again!




Projects
manager

Select the *Project manager*



Unarchive...

Select  and then select *Unarchive and open*

Browse to your ...\\elecworksdata\\ProjectTemplate directory

On a standalone installation this is:

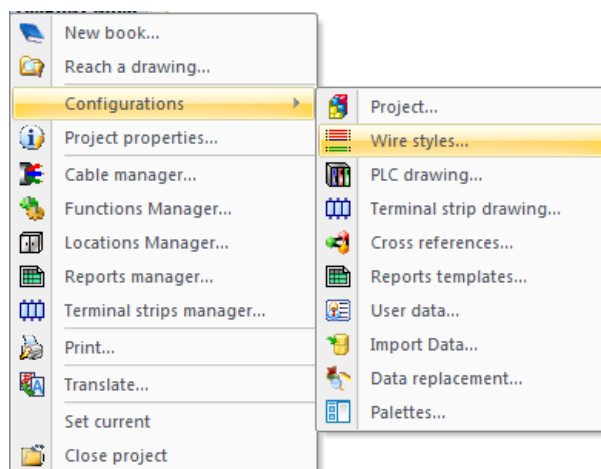
C:\\ProgramData\\elecworksdata\\ProjectTemplate

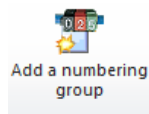
On a network installation this will be on your network server where you installed the elecworks deployment.

Highlight the template project you use for new projects and select

When the project has unarchived and is available in the Projects Manager:

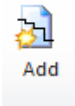
Right click on the project > *Configurations* > *Wire Styles*



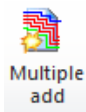


Different Numbering Groups can be added

A different numbering group may be used to differentiate pneumatics from hydraulics from wires or could be that a different set of standards are applied to the particular numbering group e.g. numbering not activated as default

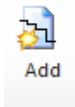


A new single wire type can be added

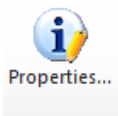


A new multi-phase or multi-wire type can be added

Wire types can be added by function or by wire size and colour or a combination of both. In this month's Tips and Tricks we will define the wire size and colour.

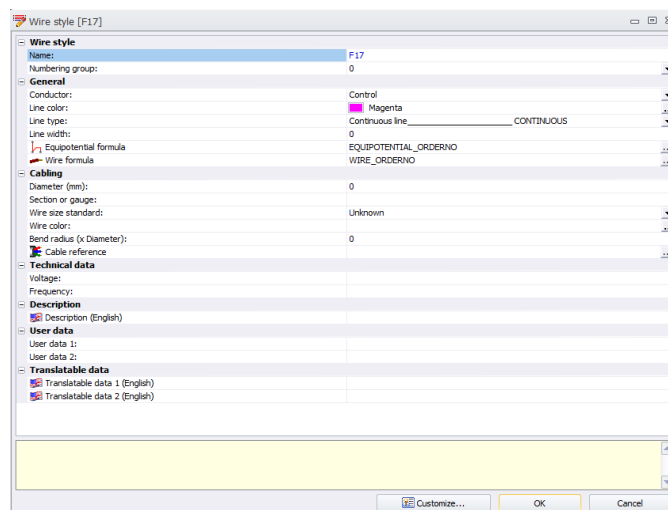


Highlighting Group 0 down the left hand side, select of F*. A new control wire type will be created with the prefix of F*



Highlight and select

A dialogue similar to below will be shown



In this example we will create a wire type called = 12VDC which only has one wire size. If you do have multiple wires sizes for a specific function, you may have to create several wire types.

Name: = 12V

Line Colour:  Blue

This is the graphical colour

Equipotential formula: e.g. EQUIPOTENTIAL_ORDERNO

An equipotential number is a number that applies to all wires of a series of connected wires

Wire formula: e.g. WIRE_ORDERNO

A wire number is a unique number applied to the physical wire i.e. each wire whether connected in series or not is given a unique number

Diameter: 2.95

This is the OD of the wire

Section or gauge: e.g. 1.0

Wire size standard: Section (mm²)

Wire Colour:  Blue

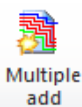
This is the actual colour shown in reports

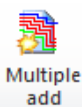
Technical Data: Voltage: 12VDC

Technical Data: Frequency: N/A

Description (English): 12VDC

Select to complete the new wire type



A multi-wire type  is identical in the process but you have obviously more wires to define. If you're creating as an example:

~400V (400VAC) then you may need to create the variants such as 2.5 mm², 4.0 mm², 6.0 mm², 10 mm², 16 mm², 25 mm² etc.