

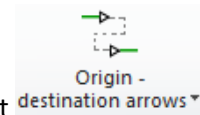
elecworks™ Tips & Tricks

Manual & Automatic Equipotential Management – What’s the Difference?

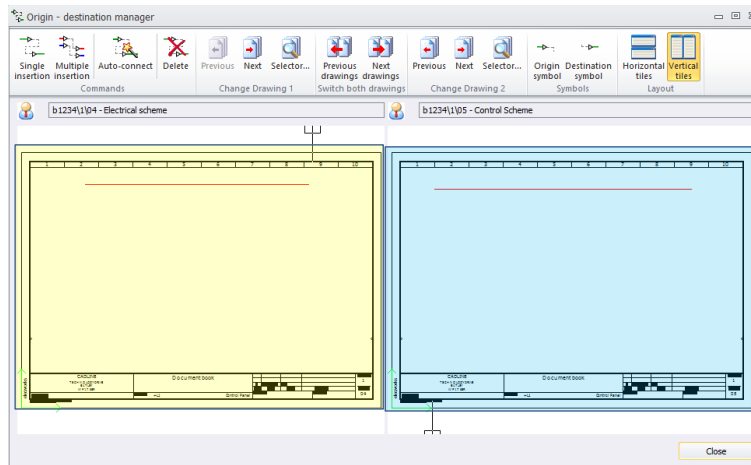
Manual equipotential markers are placed on an origin wire end and a destination wire end. By forming a pair between the origin and destination wire ends, elecworks assumes a continuation of the same equipotential. The wire is numbered from the origin end. The origin end however can be placed after the destination end. In other words links can be up, down, left or right.

Automatic equipotential markers are automatically placed on both origin and destination wire ends when wire numbers of the same equipotential value have been placed. The direction of these markers follow the Wire and Component Numbering direction set within the Projects configuration (Project Configuration > Mark). This is especially useful when storing circuits as Macros.

Manual equipotential markers process:

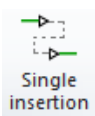


When one or more wires go from one page to another and you wish to form links, select



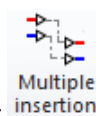
On the left hand side, you can choose your drawing selection 1

On the right hand side, you can choose your drawing selection 2



Select

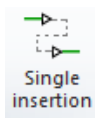
for a single wire connection or



Multiple insertion

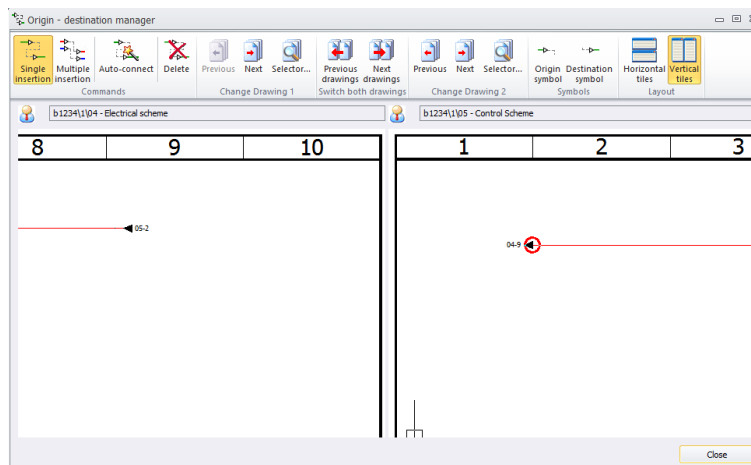
for multiple wires





When you select **Single insertion** as an example, you can either select a wire from the drawing selection 2 dialogue or drawing selection 1 dialogue. In other words a wire can cross reference to the top, down, left or right

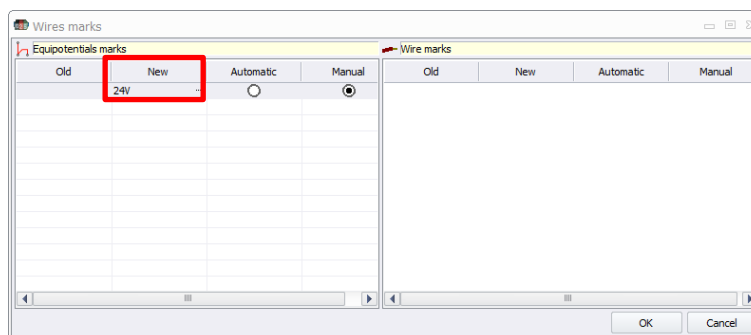
Wire numbers do not have to be placed to form a connection pair between two equipotentials. Additional pairs can be made without having to come out of the dialogue



Automatic equipotential markers process:

With automatic equipotential markers, the wire number has to match on the origin and destination wires.

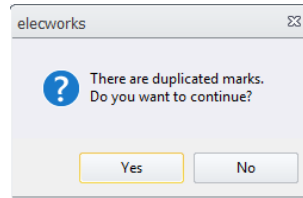
You can *right click* over a wire and select **Edit wire mark...** to define the specific wire marker value



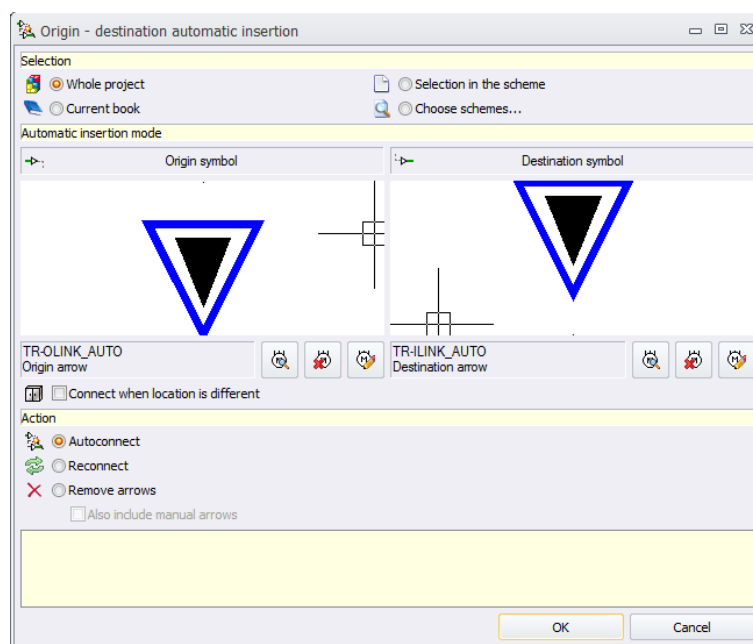
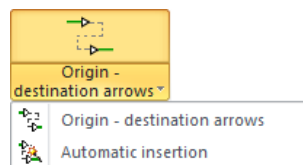
Entering a value in *New* will change the wire marker to a **Manual** wire mark

This has to be repeated on both wires with the same wire marker value

When assigning the duplicated wire marker, elecworks will ask you whether you want to continue:



The automatic insertion feature will insert the links and will connect together any wires bearing the same equipotential number. When all the drawings are made, use the automatic insertion feature:



The automatic links are created automatically.

Both manual and automatic equipotential markers can exist within a project. Typically automatic equipotential markers are used on standard circuits where the wire numbers do not change whereas manual markers are used on variables.