

elecworks™ Tips & Tricks

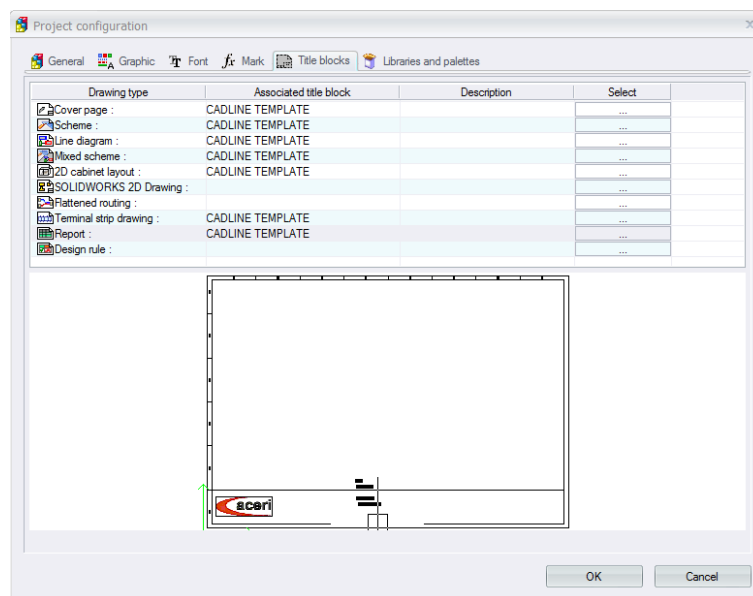
Updating / Changing your Project Title Border

You may want to swap out the title border in your project or you may have made modifications to your existing title border and wish to implement these changes upon an existing project where the title border has already been defined.

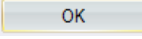
The title border used for schematics is defined in the *Project* configuration

Right click over the current activated project and select *Configurations* >  Project...

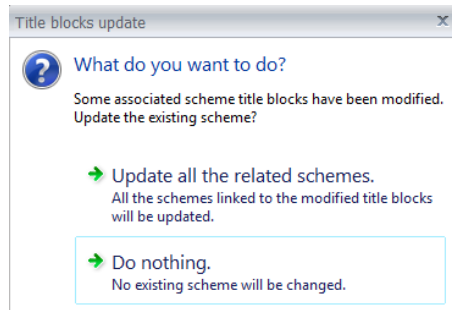
Select the  Title blocks tab



You are able to select the Search option to select the title block you wish to change to for each drawing type.

When the required changes have been made, select 

You then have the option of updating all related drawings or doing nothing (only affects new drawings)



- Update all the related schemes.
All the schemes linked to the modified title blocks will be updated.

Select

For an individual drawing, you can right click over the drawing and select *Title block* >

The following options are available:

