

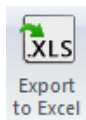
# elecworks™ Tips & Tricks

## Modify Your Drawings Using Microsoft Excel

This document shows you how you can modify your drawings using Microsoft Excel.

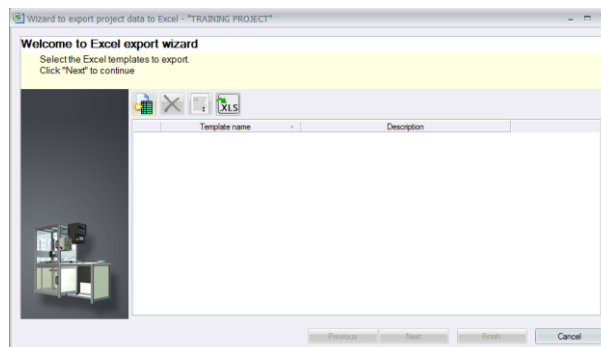
In this example, we will modify the component tags.

Select the *Import/Export* ribbon tab



Select the command

The following dialogue will be shown:



Select  Add an Excel template to the list

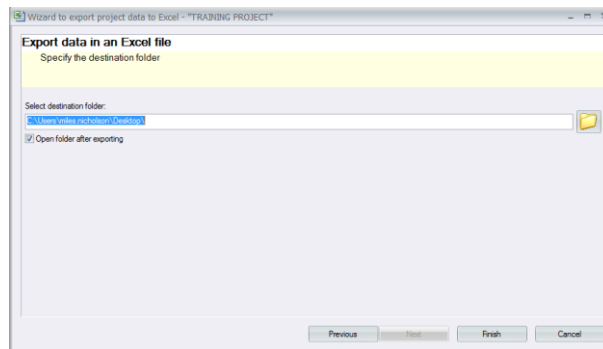
A list of available configurations will be shown.

Select  *ElectricalComponents.xls*

Select

Select

Specify the output directory and then select

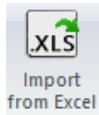


The Excel output can now be modified. You may have to ensure that the format of the cells is defined as text as some control character such as “=” and “+” which are used for installation and location values can be seen as formulae’s.

Once the excel data has been modified, save the Excel file.

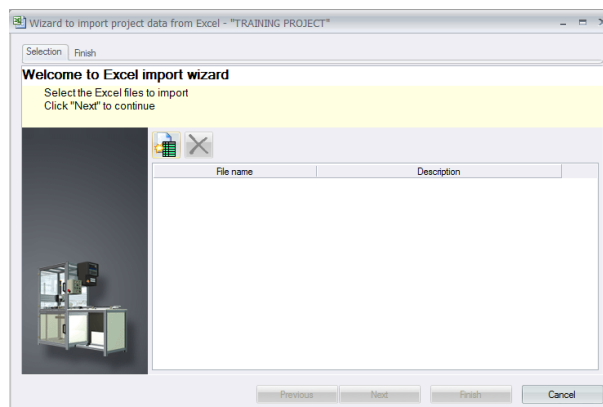
To import the required Excel changes back into elecworks™:

Select the *Import/Export* ribbon tab



Select the command

The following dialogue will be shown:

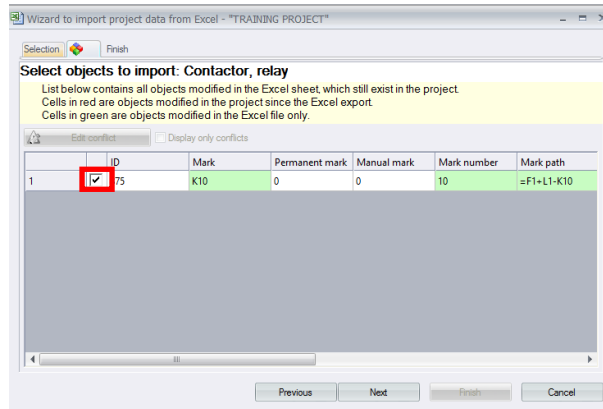


Select  *Add an Excel template to the list*

Browse to the modified Excel sheet

Select

Select



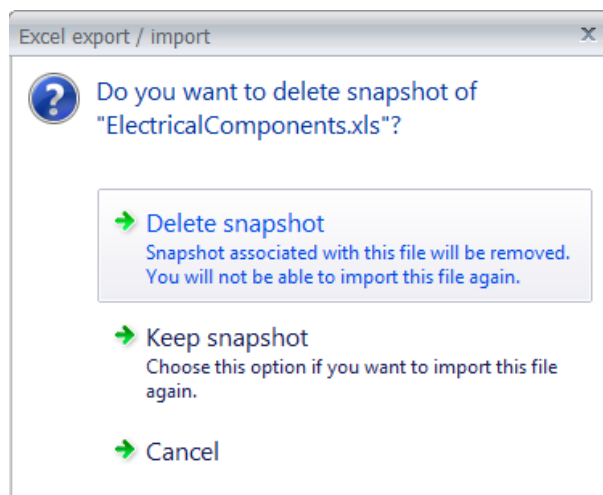
The objects modified in Excel will be highlighted.

If you wish to change your mind over a change, you can select  to deselect (highlighted above).

Select

Select

You are then able to create a snapshot of the excel file in the case that further modifications and changes may be made to the Excel file.



The changes will have been made to all of the instances where the changes have been made.