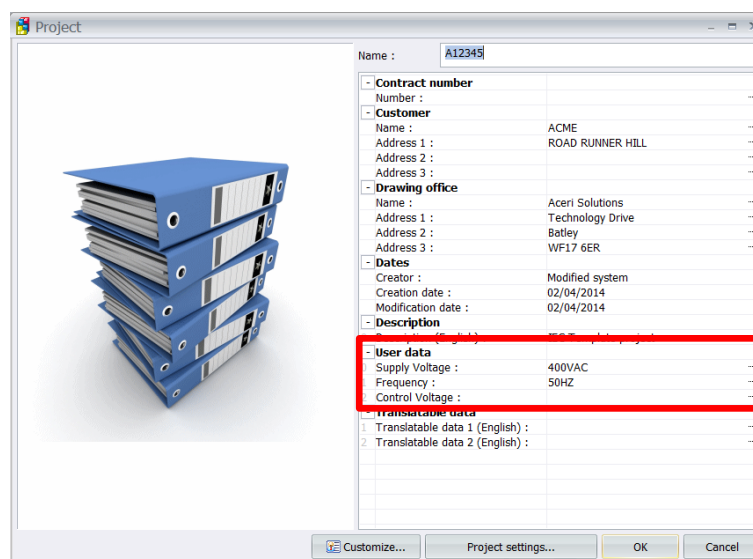
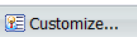


elecworks™ Tips & Tricks

Configuration Changes

You can make changes to the majority of elecworks interfaces. As an example, the picture below shows the Project Properties dialogue

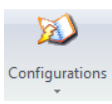
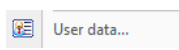


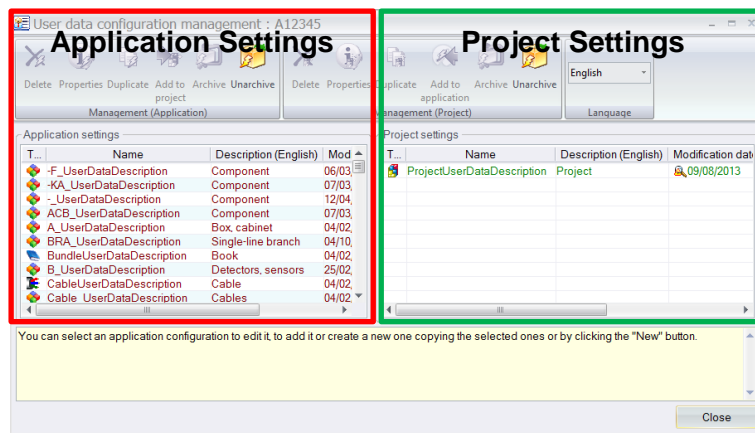
Selecting  allows the user to add additional fields and name them accordingly.

These configuration changes are stored in the project therefore meaning that if the project is archived as a template, the changes are applied to all new projects.

In addition, you can also copy these settings to the application settings meaning that all projects irrelevant of template project used for creation will adopt the changes (unless the template project has its own unique settings).

To do this:

Select *Project* ribbon tab >  Configurations ↓ >  User data...



Highlight the settings you wish to copy from your project settings (right) and select

The personnel changes that you have made to the configuration of the project dialogue will then be copied to the application