

elecworks™ Tips & Tricks

Import of Siemens Product Master Data into elecworks™

The document describes the import of exported Siemens product master data into the elecworks™ *Manufacturer parts manager*. The document also explains the basics about how to export data from the Siemens CD “Technical Product Data for CAx Applications but for full instructions please refer to the documentation on their CD.


The data is imported into the Manufacture parts manager via the Import interface. A generic configuration file for the import is available through support. It is however recommended in checking the settings of the configuration file for each product group and saving as a separate configuration file for the import as the allocation of the information to the respective fields may vary depending on product groups.

Procedure

Installing the Siemens CAx data import configuration file

The Siemens CAx data import configuration file needs to be installed before you can import the data from Siemens CAx software.

In elecworks™, select the *Project* tab

Select  *Configurations* ↓

Select *Import Data...*

Under the panel *Management (application)* select  *Unarchive*

Browse to the “Siemens CAx.config.tewzip” file supplied by technical support

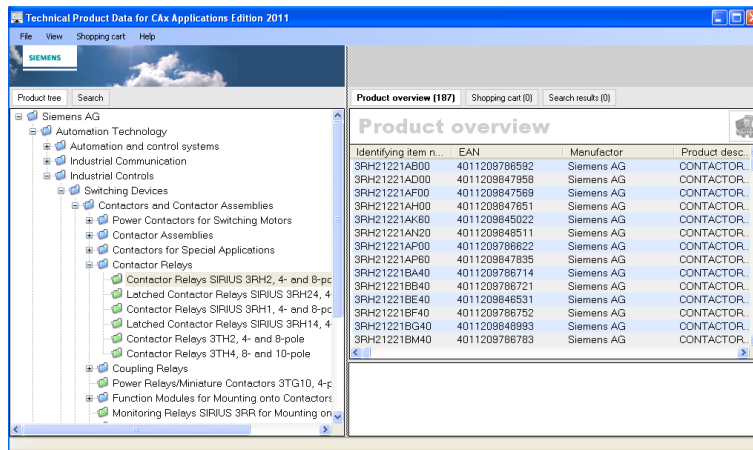
Select 

Select 


Select 

Exporting Data from Siemens Product Master Data

In this example, we will only export the SIRIUS range of relays from the CAX software for import into elecworks™



Using *Shift* and *Ctrl*, select the products you wish to import into elecworks™ *Ctrl A* selects all

Select  Add product selection to shopping cart

Select the *Shopping cart* tab

Select  Export CAX data types

Check *Product master data only*

Check *Microsoft Office Excel 97-2003 (*.xls)*

Select

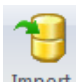
Select *Close*

The xls spreadsheet will be saved in your *Target directory*

Importing the Siemens CAX Excel Data

In elecworks™, select the *Library* tab

Select  *Manufacturer parts manager*


Select  *Import*

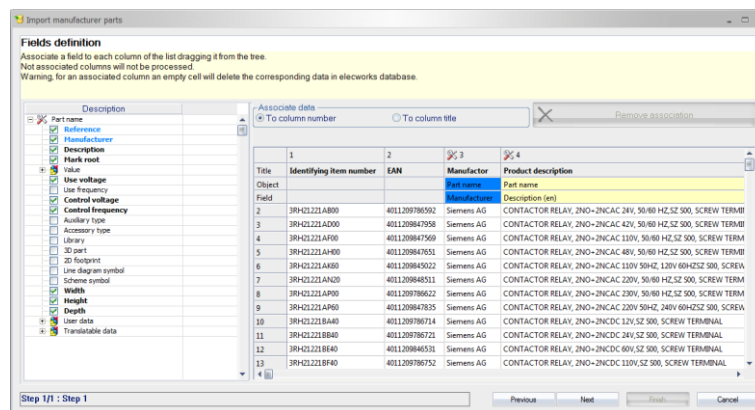
Select *Import template* ↓

Select “Siemens CAX Import”

Select  *Excel file*

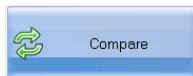
Browse to the Siemens CAX export file and select  *Open*

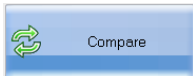
If you wish to check the settings match the type of components you are importing, select  until the following mapping screen is displayed



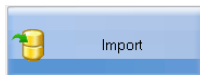
If changes are required drag the required field from the left part of the dialogue to the correct header on the right part of the dialogue

Select 

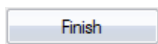


Select  to compare whether the parts you are importing are already in elecworks™. A log file will be created advising you of differences/changes.

N.B. Siemens are known as “Siemens” in elecworks™ and “Siemens AG” in the Siemens CAx software. You may wish to edit the Excel spreadsheet so that Siemens AG becomes Siemens prior to import



Select



Select

Select the *Filters* tab 


Uncheck *In the class*



Select

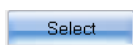
Using *Shift* and *Ctrl*, highlight all of the ****Unclassified elements****



Select  *Properties*

Select ****Unclassified elements**** in the Class option

Select the correct *Class* from the list. In this example *Contactor relays, relays*



Select



Select



Select

The new parts will now be in elecworks™

