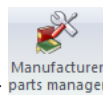


elecworks™ Tips & Tricks

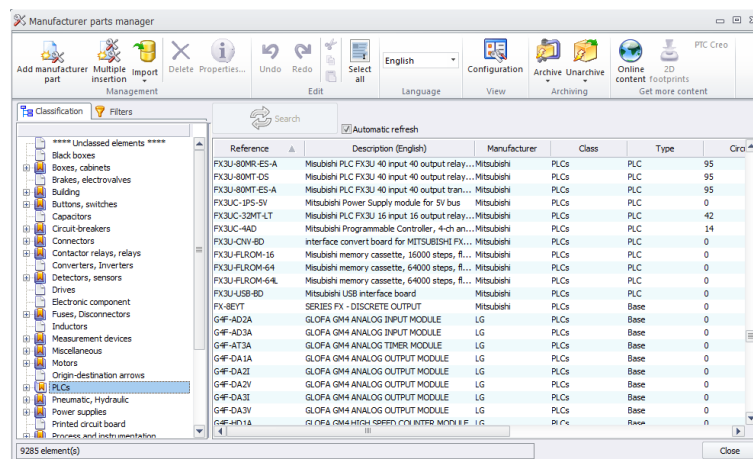
Defining a PLC Rack in the Manufacturers Parts Database

This Tips and Tricks, explains how to define a PLC rack.

When creating a new PLC, it is always important to review the manufacturer’s data sheet to ensure that the terminations defined are as per their data.



From the *Library* ribbon within **elecworks™**, select

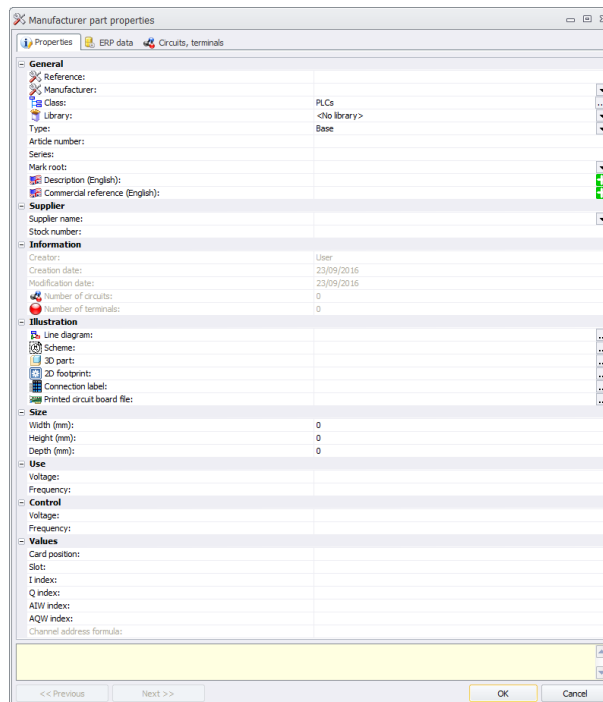


The classification of the part must be the same as the classification of the symbol you intend to “pair” the part up with. In this example, the symbol we should select PLC’s > Racks. You can filter down further by defining the type of module as well. This ensures that parts are automatically filtered on the correct type of part when assigning to a symbol.

Select *PLC’s > Racks*



Select *Add manufacturer part*



Define the following:


Reference: 6ES7400-1JA01-0AA0
 Manufacturer: Siemens
 Class: PLC's
 Type: Rack
 Description (English): SIMATIC S7-400 UR2 RACK CENTRALIZED AND DISTRIBUTED WITH 9 SLOTS 2 REDUNDANT PS PLUGGABLE
 Commercial Reference: 6ES74001JA010AA0

The commercial reference may be different from the reference field value as the reference may be an internal part number rather than the manufacturer's part number or the manufacturer's actual item number

Voltage: 24VDC
 Line diagram symbol: EW_SY_PLC
 Width (mm): 257.5
 Height (mm): 290
 Depth (mm): 27.5
 Slot: 9

(N.B. The number of slots defined in the part detail limits the number of slots that you can define when using this particular rack)

Circuits

Some PLC's will also have power connections so these should be defined in  Circuits, terminals

Select  when completed

Siemens Reference Documents Used

[6ES7400-1JA01-0AA0 Data Sheet](#)

