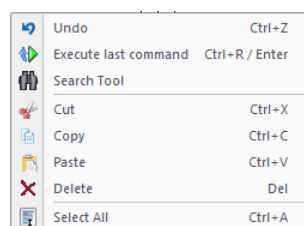


Search Facility

In elecworks™ 2013, a new search facility has been introduced which enables you to search on any part of the project from documents, parts, components etc.

The **Search** facility can be invoked in a number of ways

Right click in free space within a drawing

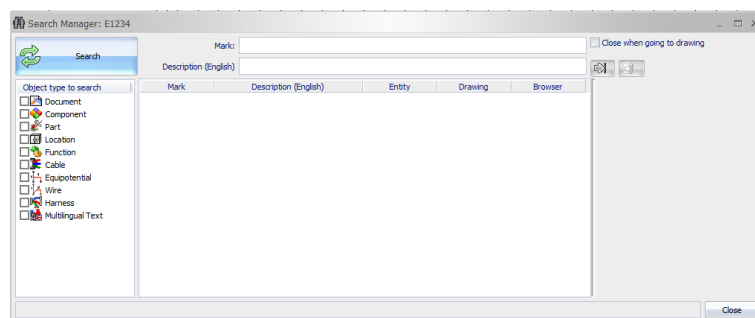


Tools ribbon tab > Search panel

Quick Access bar



When selected the following dialogue is displayed:



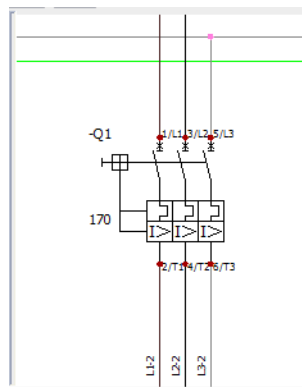
As an example, select Component and enter the component tag e.g. Q1

Select  Search

All items that match the search criteria will be displayed

Mark	Description (English)	Entity	Drawing	Browser
Q1		04/2B - Magn...	04 - Electric...	
		11 - GV2ME16	11 - Control...	

Highlighting the item in the list will show a preview to the right of the dialogue



Go to drawing

will navigate to the drawing where the item is located and zoom into the location of the item



Go to browser

will highlight the item in the *Component Browser* (side panel)

