

elecworks™ Tips & Tricks

Adding Commands to the Quick Access Bar

The Quick Access bar is shown in the top left corner as a default.

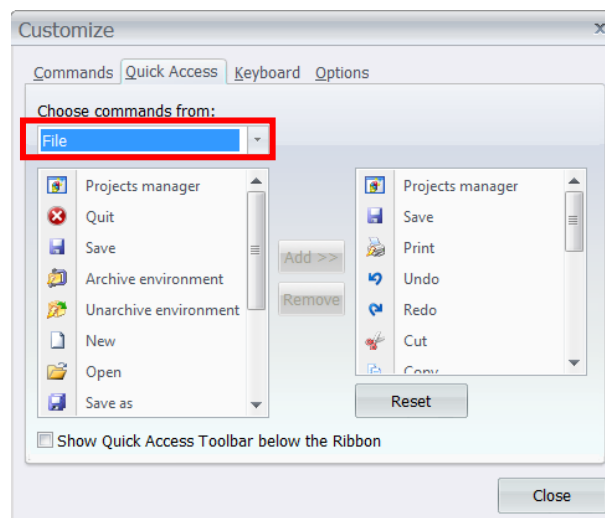


You can customize and add your own favourite commands to allow you to quickly access

Select the dropdown arrow at the end ↓

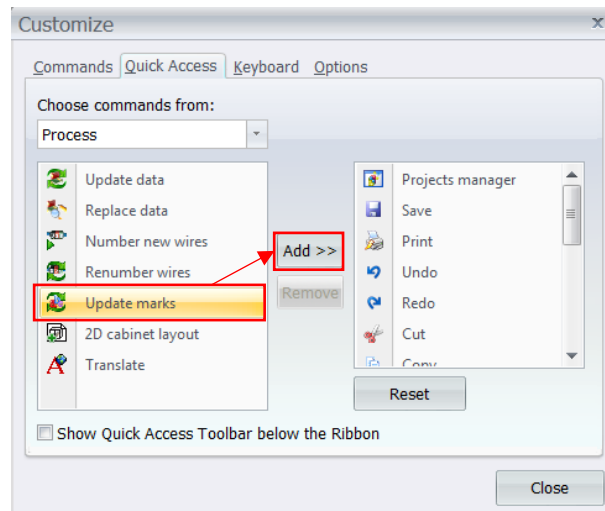
Select *More Commands*

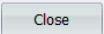
You can select the type of command



You can also create shortcut keys for specific functions (keyboard)

When choosing a command highlight the command and select *Add*



Select  to accept the changes