

elecworks™ Tips & Tricks

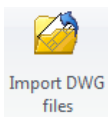
Importing AutoCAD Electrical Symbols into elecworks™

Any block with or without attributes can be brought into elecworks. However, blocks with attributes can maintain their intelligence thus meaning symbols from AutoCAD®, AutoCAD® Electrical, Electrical Designer, Promis•E, Tracelec, ePlan etc. can be brought into elecworks™ intelligently. This example shows how AutoCAD® Electrical symbols can be brought into elecworks™.

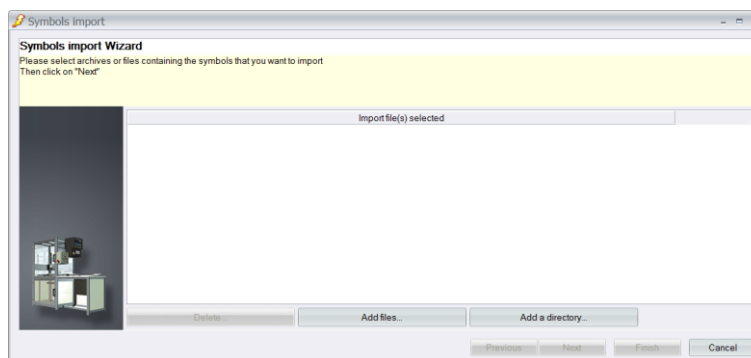
Select the *Library* ribbon tab



Select



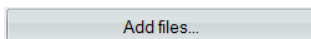
Select



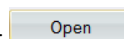
Select **Add files...** to add selected symbol blocks

Select **Add directory...** to add an entire library e.g. IEC2

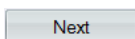
Select



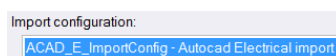
Select the symbol blocks that you wish to import using *Shift* and *Ctrl* and select



Select

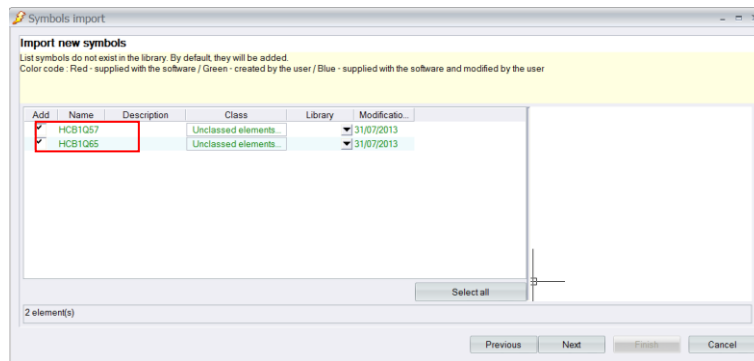


Select the ACAD_E import configuration



Select

For each of your imported blocks, you can define the classification (type of symbol)

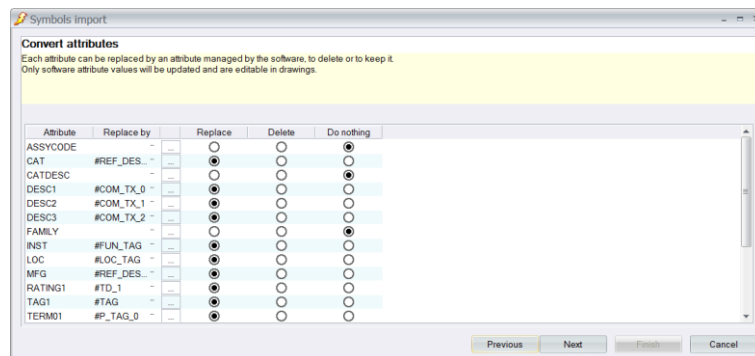


Highlighting each symbol will show you the preview of the block that you are importing

Select the appropriate classification for each symbol

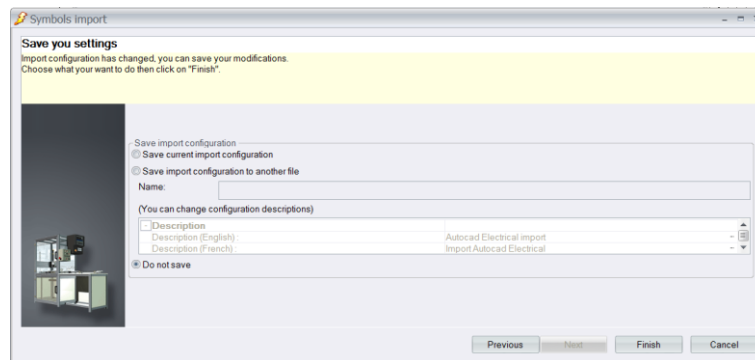
Set the library associated to be USER so that the symbols can be easily filtered

Select



Some attributes will not be mapped as they are not required in elecworks

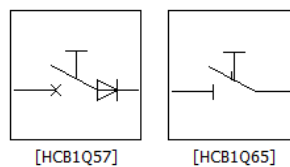
Select



If no changes have been made to the attribute mapping, select *Do not save*

Select

The new symbols will now be in the library under their respective classifications



Right click on each symbol and select *Properties* to change the *Description*

Autodesk and AutoCAD are registered trademarks of Autodesk Inc. in the USA and/or other countries. All other brand names, product names, or trademarks belong to their respective holders