

elecworks™ Tips & Tricks

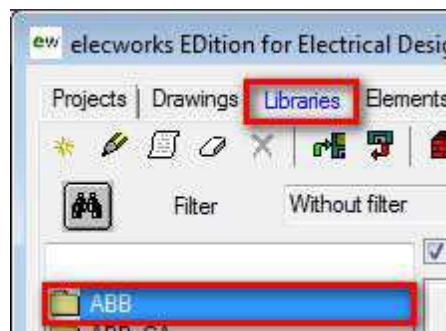
Converting Electrical Designer Data To elecworks™

Aceri's/Trace's products are going through a rebranding process under the elecworks™ name. Electrical Designer will be known as elecworks™ EDITION. For the simplicity of the Tips and Tricks we will keep the name as Electrical Designer however.

Electrical Designer customers have the ability to migrate to the new standalone elecworks™ and all of the data in Electrical Designer can be migrated into elecworks™. This Tips and Tricks explains how:

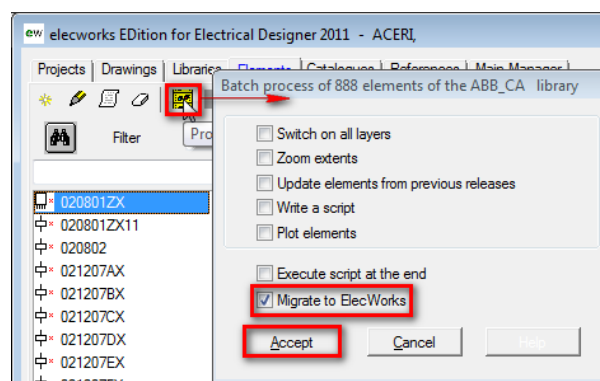
Converting A Library

Select the library to be converted from the Libraries tab:



Select the *Elements* tab > *Process elements*

Check on the *Migrate to elecworks* option only, and select *Accept*



During the process the elements will be opened and Electrical Designer will create a copy of the Electrical Designer library and then update the Electrical Designer attributes with the elecworks intelligent attributes.

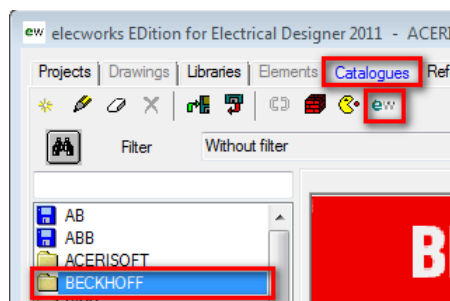
A new folder will automatically be created in the Libraries folder and a copy of all the updated element dwg's will be copied into this folder. This ensures that your Electrical Designer library data is kept separate and can be used in future in Electrical Designer if required.

When the process is completed a zip file will automatically be created containing all the files required for unarchiving in elecworks™.

Converting A Catalogue

Catalogues need to be converted on a catalogue by catalogue basis. In order to achieve this, the following steps should be carried out:

Select the catalogue to be converted in the Catalogues tab:



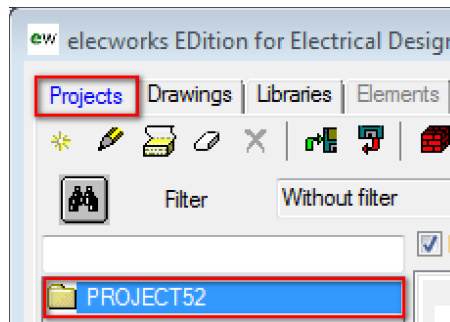
Select the **ew** icon to convert the catalogue. A zip file will be automatically be created in the catalogue directory that can be unarchived in elecworks™.

Converting A Project

For a project to be intelligently converted, both catalogues and libraries (e.g. MONTA **and** BS) should be converted first. Monta is defined because your title border may exist within this library.

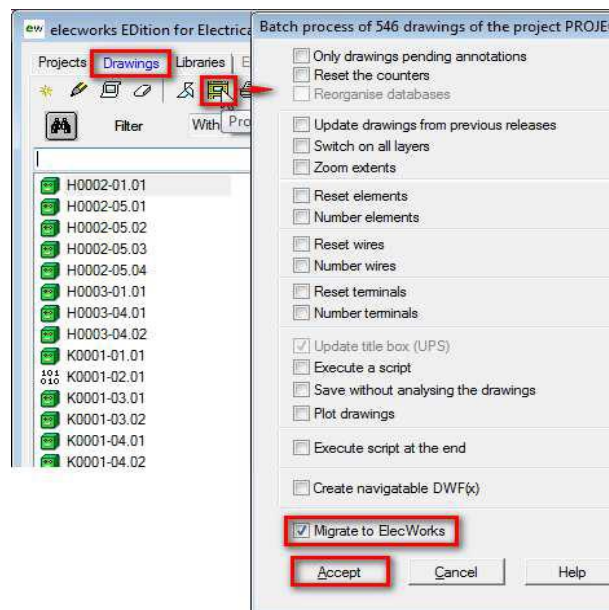
Projects need to be converted on a project by project basis. In order to achieve this, the following steps should be carried out:

Select the project to be converted in the Projects tab:



Select the *Drawings* tab > *Process drawings*

Check on the *Migrate to elecworks* option only, and select *Accept*



During the process the drawings will be opened and Electrical Designer will create a copy of the Electrical Designer project and then update the Electrical Designer project elements with the elecworks intelligent blocks.

A new folder will be automatically created in the Projects folder and a copy of all the updated dwg's will be copied into this folder. This ensures that your Electrical Designer drawing data is kept separate and can be used in future in Electrical Designer if required.

When the process is completed a zip file will automatically be created containing all the files required for unarchiving in elecworks™.